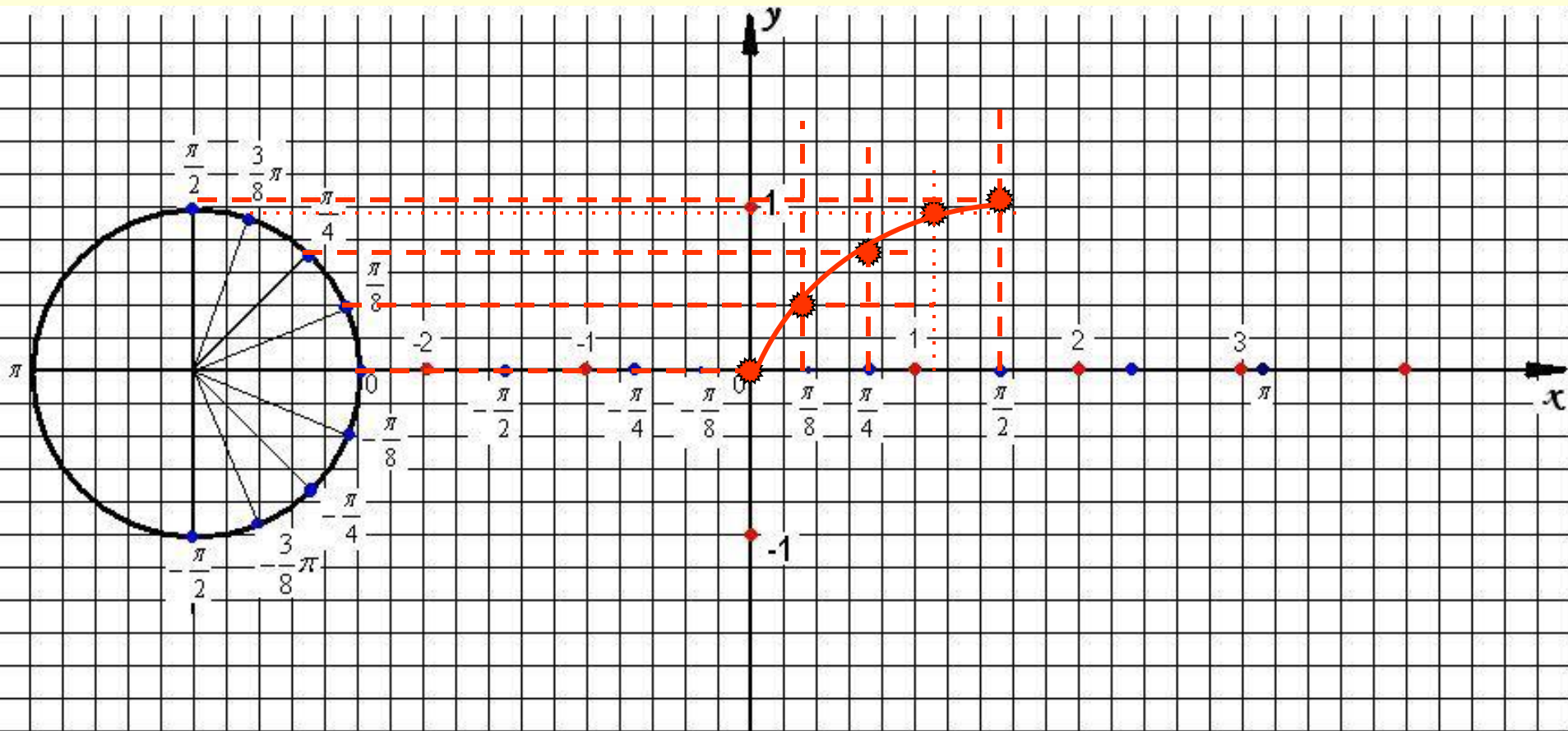


# Алгебра

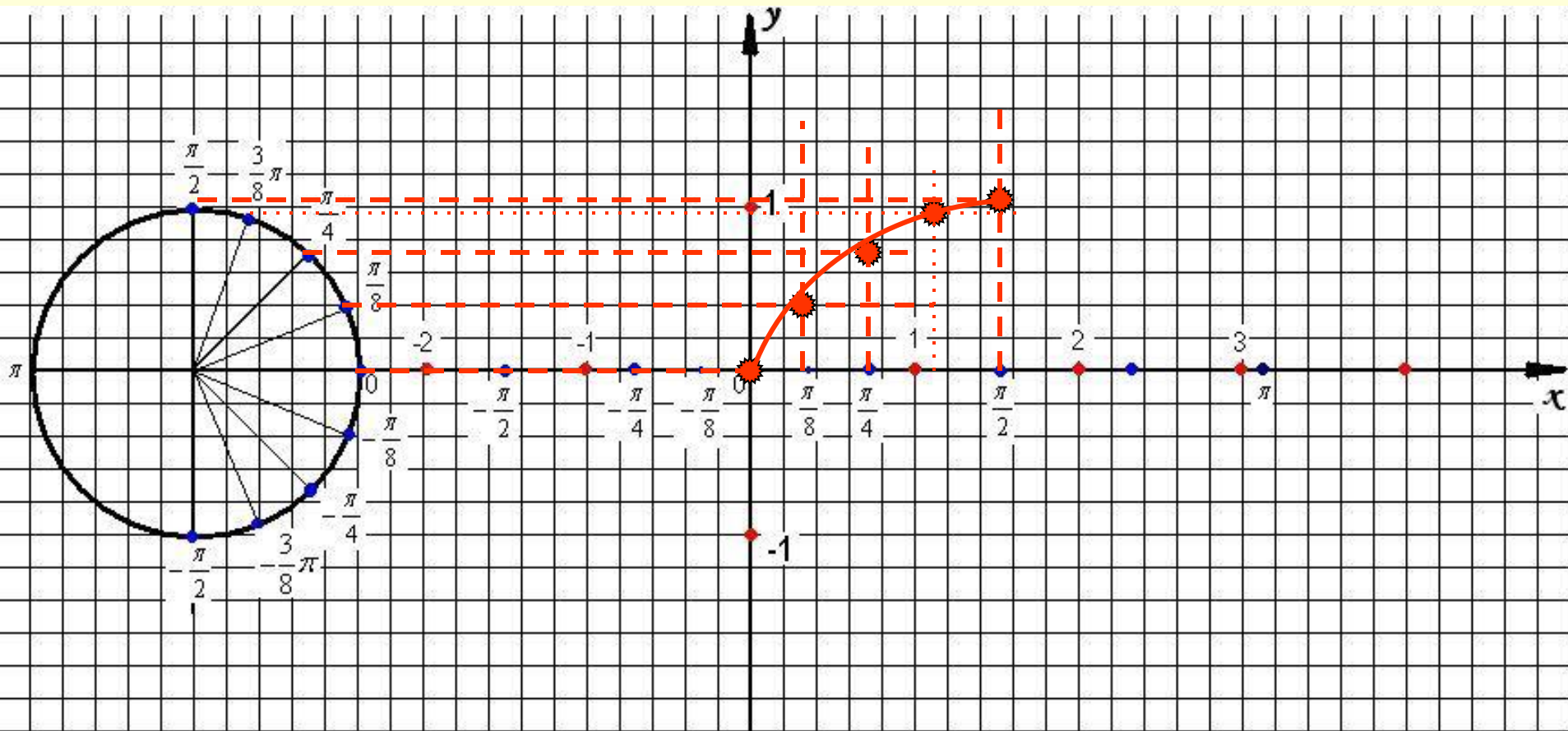
10 класс

Тема: Построение графиков функций

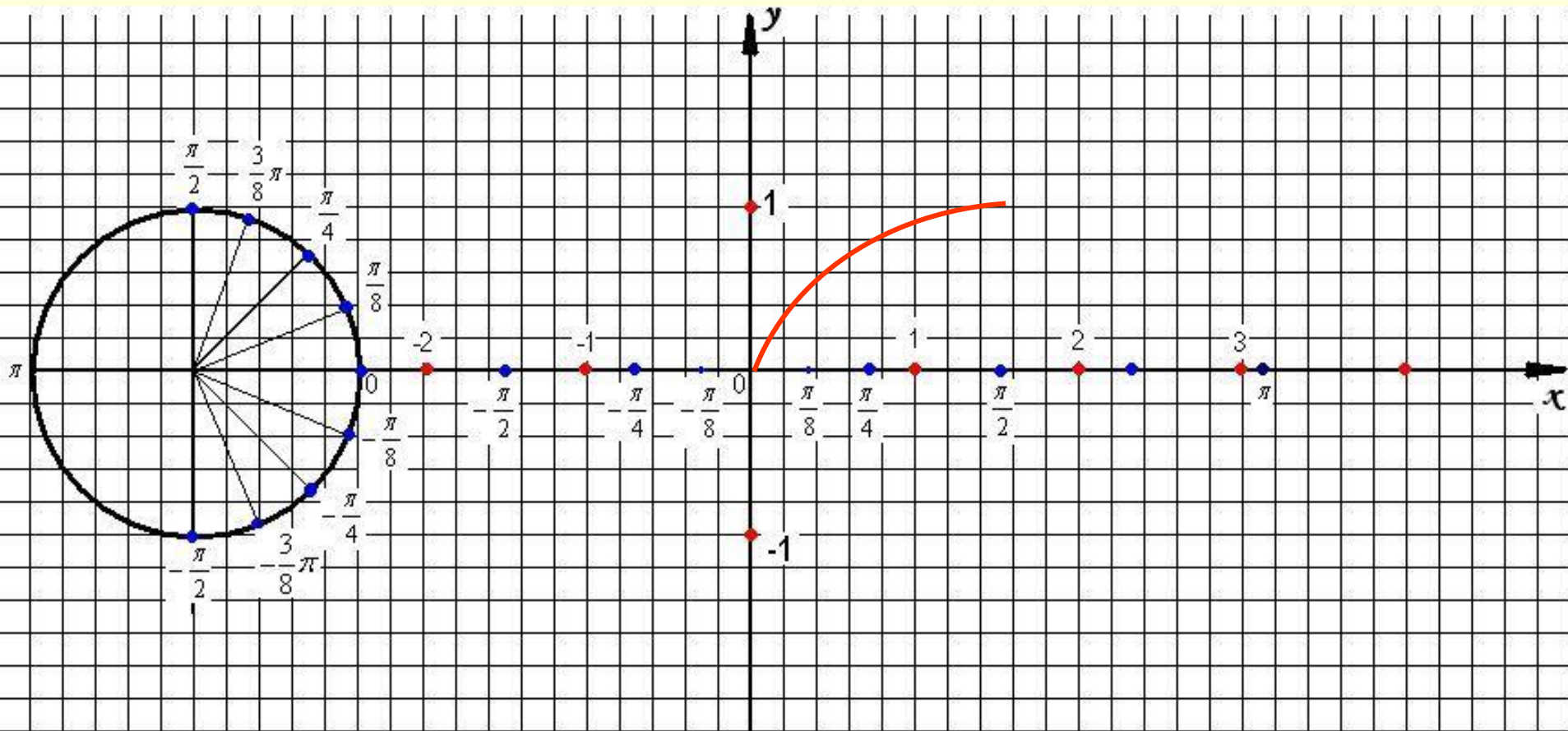
# Построение графика функции $y = \sin x$



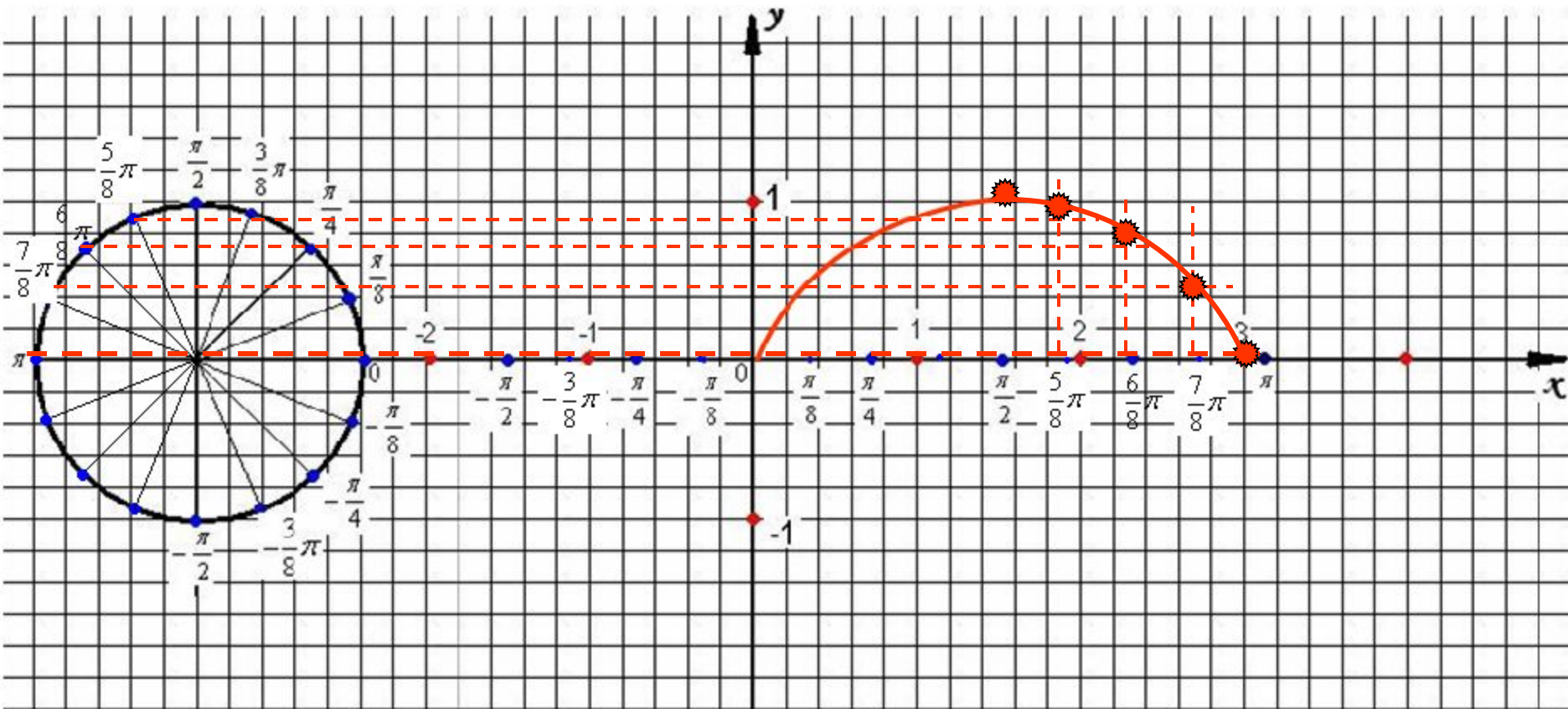
# Построение графика функции $y = \sin x$



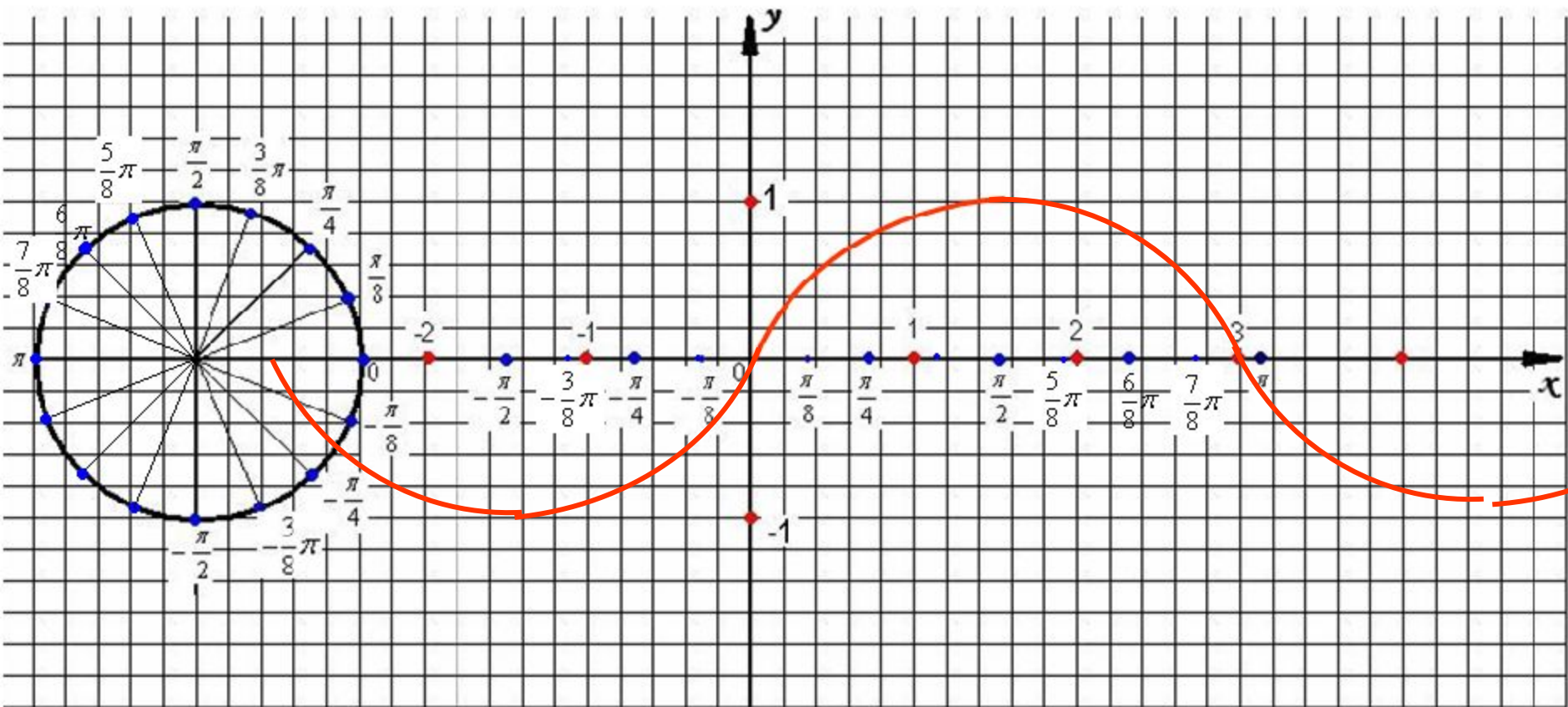
# Построение графика функции $y = \sin x$



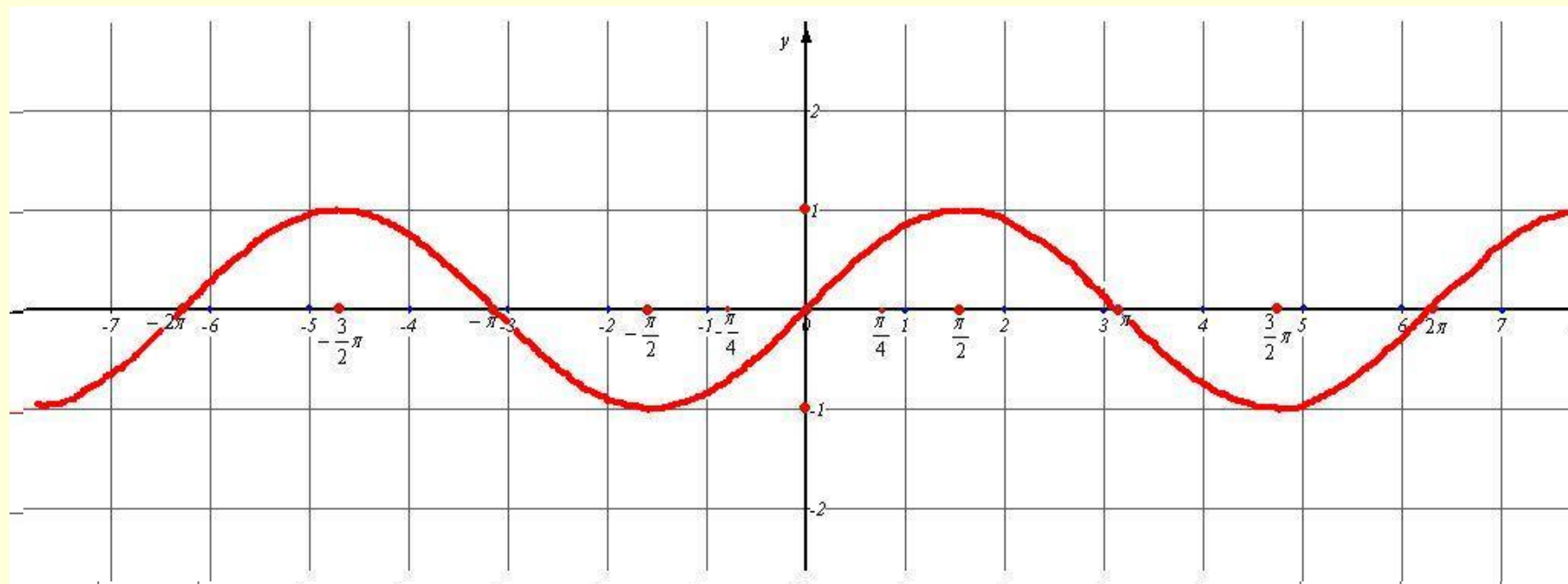
# Построение графика функции $y = \sin x$



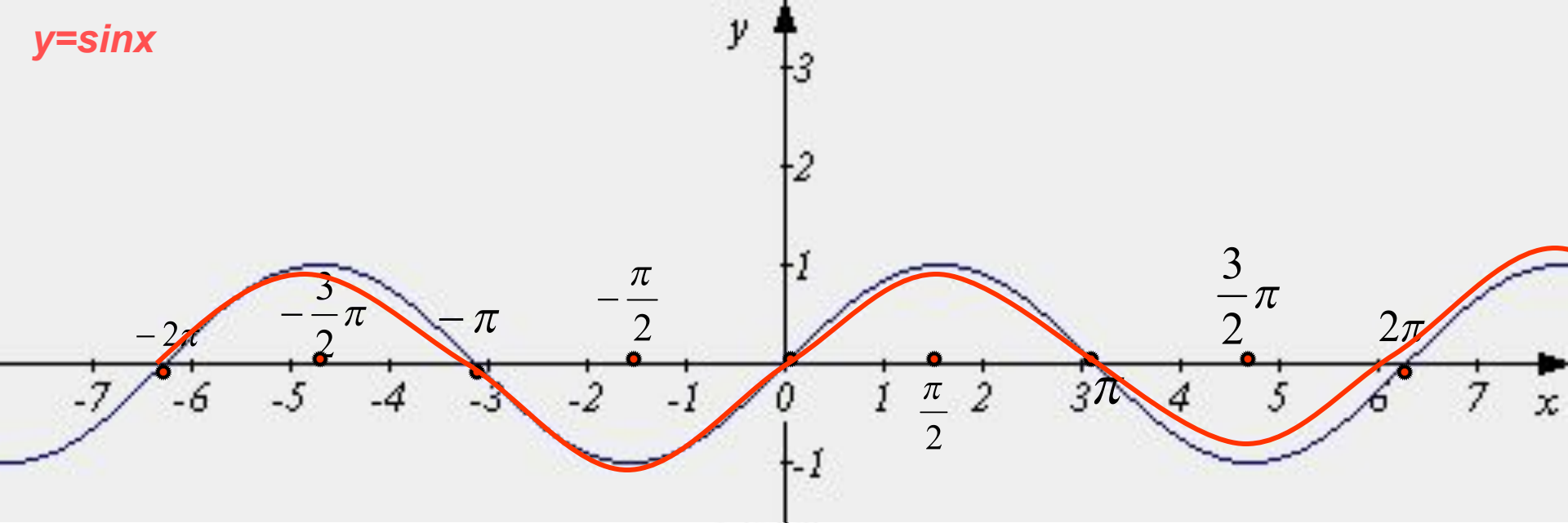
# Построение графика функции $y = \sin x$



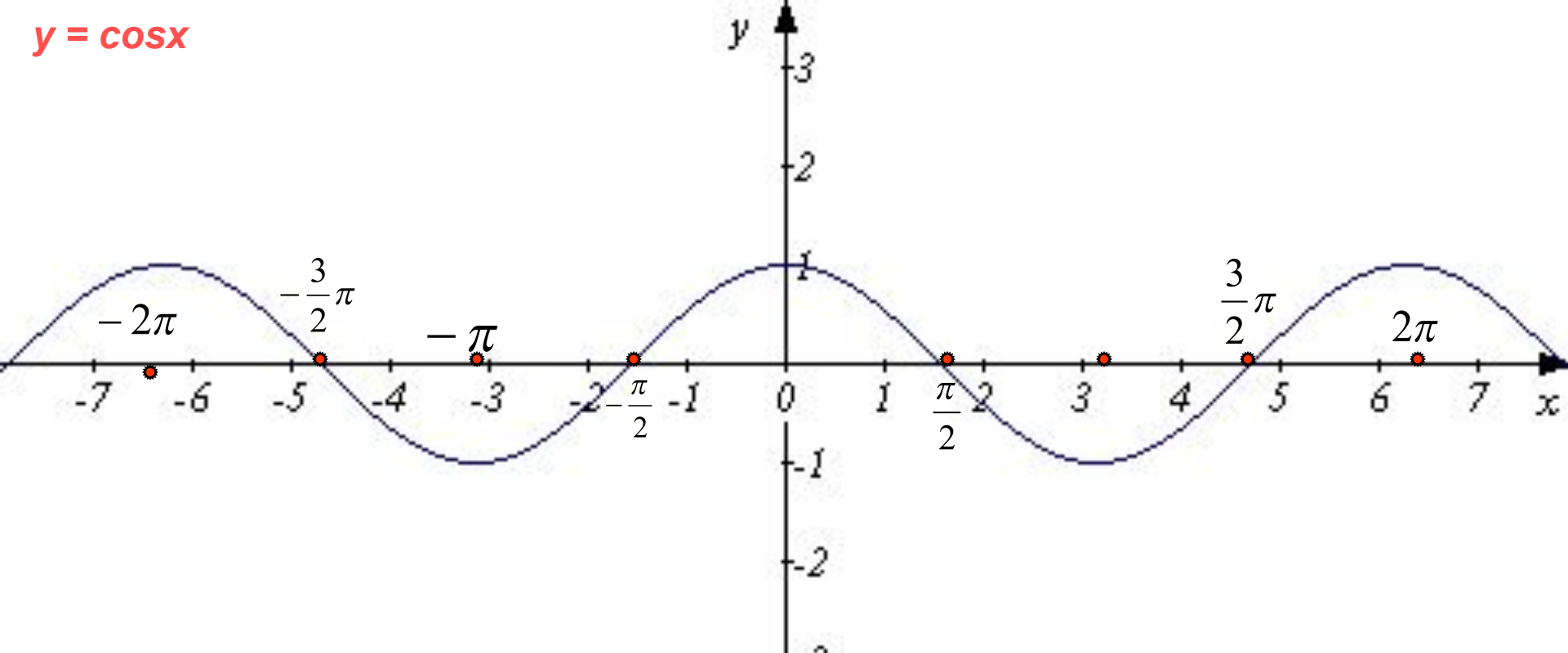
# График функции $y = \sin x$



$y = \sin x$



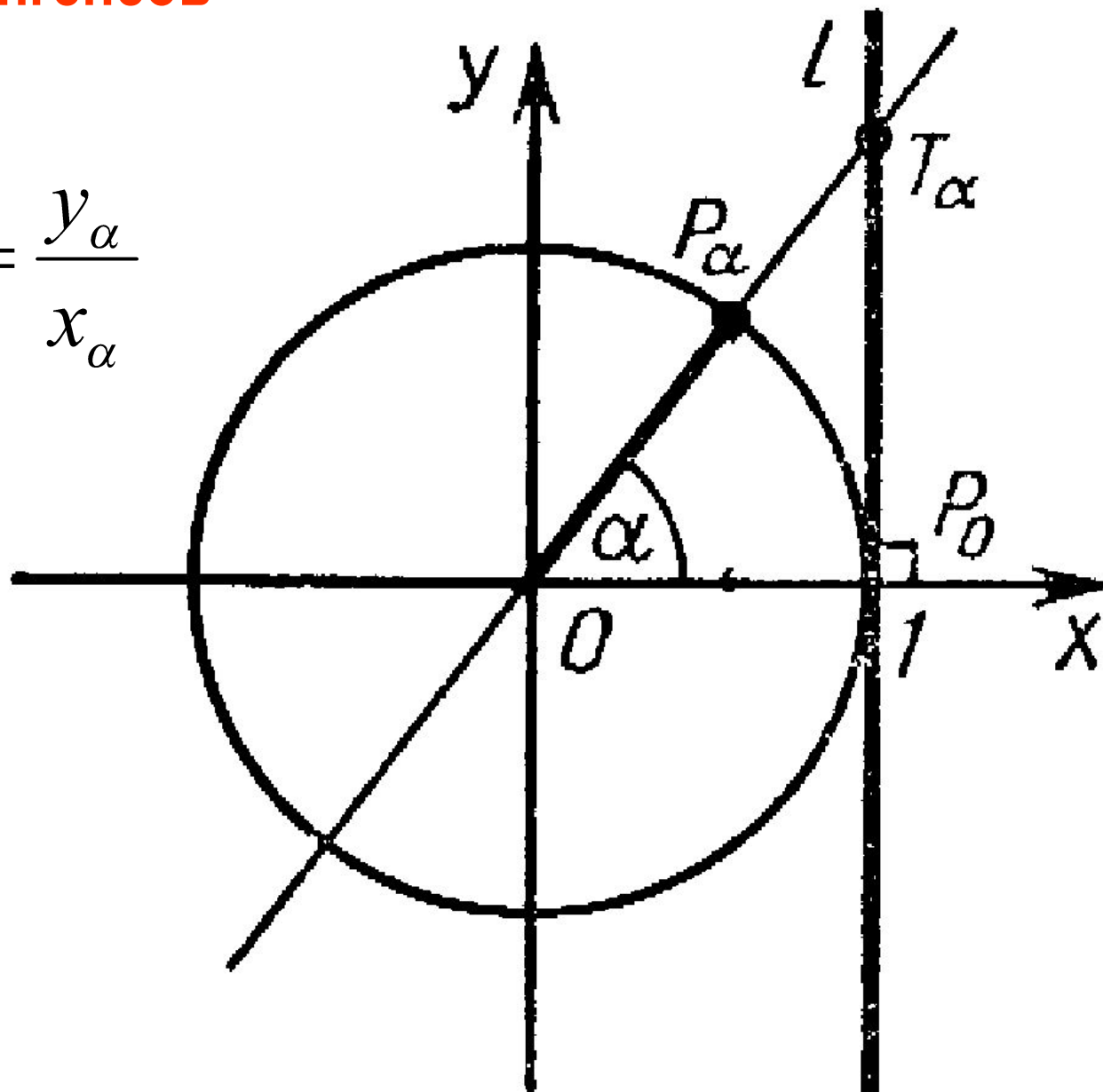
$y = \cos x$



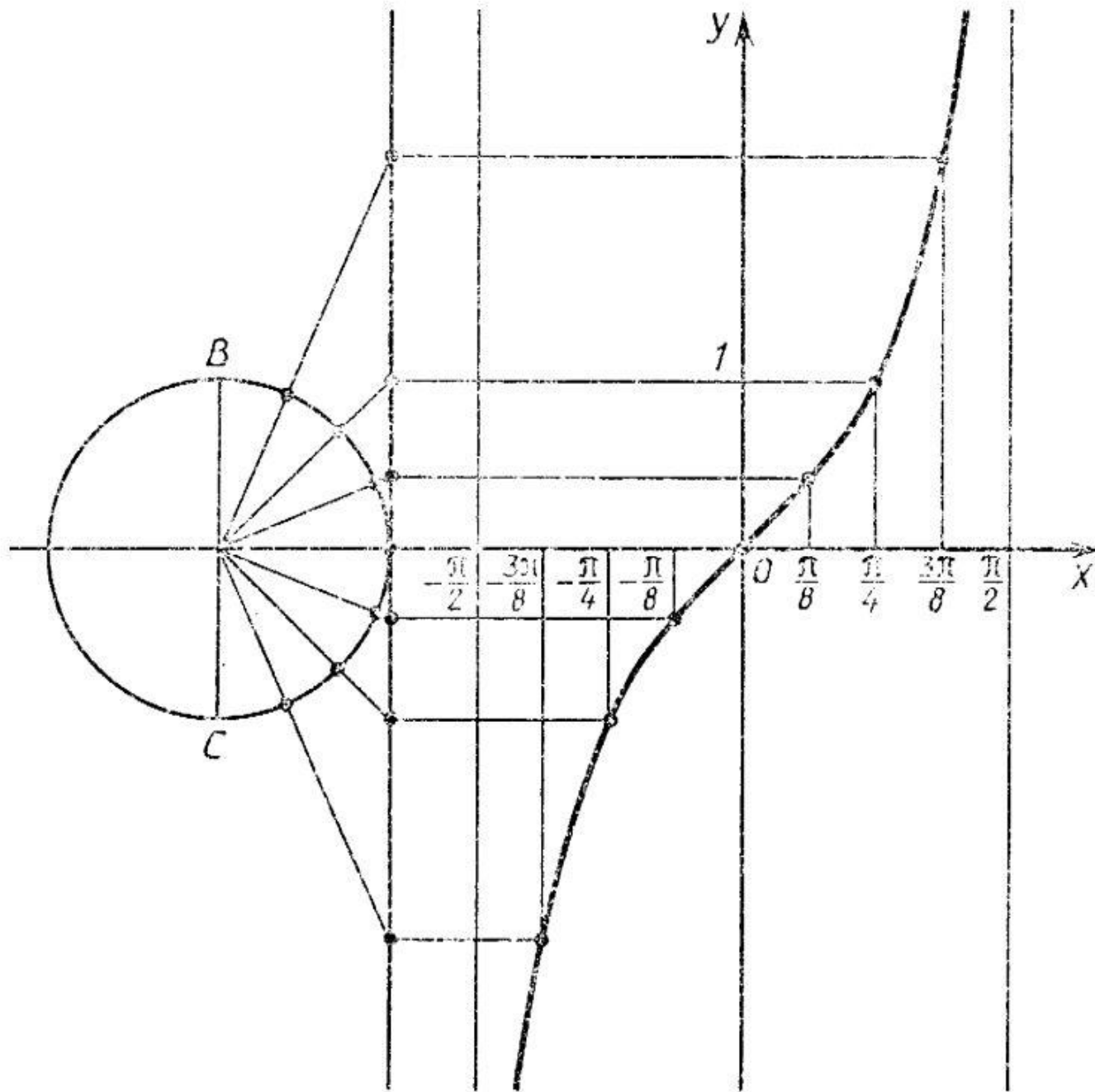


## Линия тангенсов

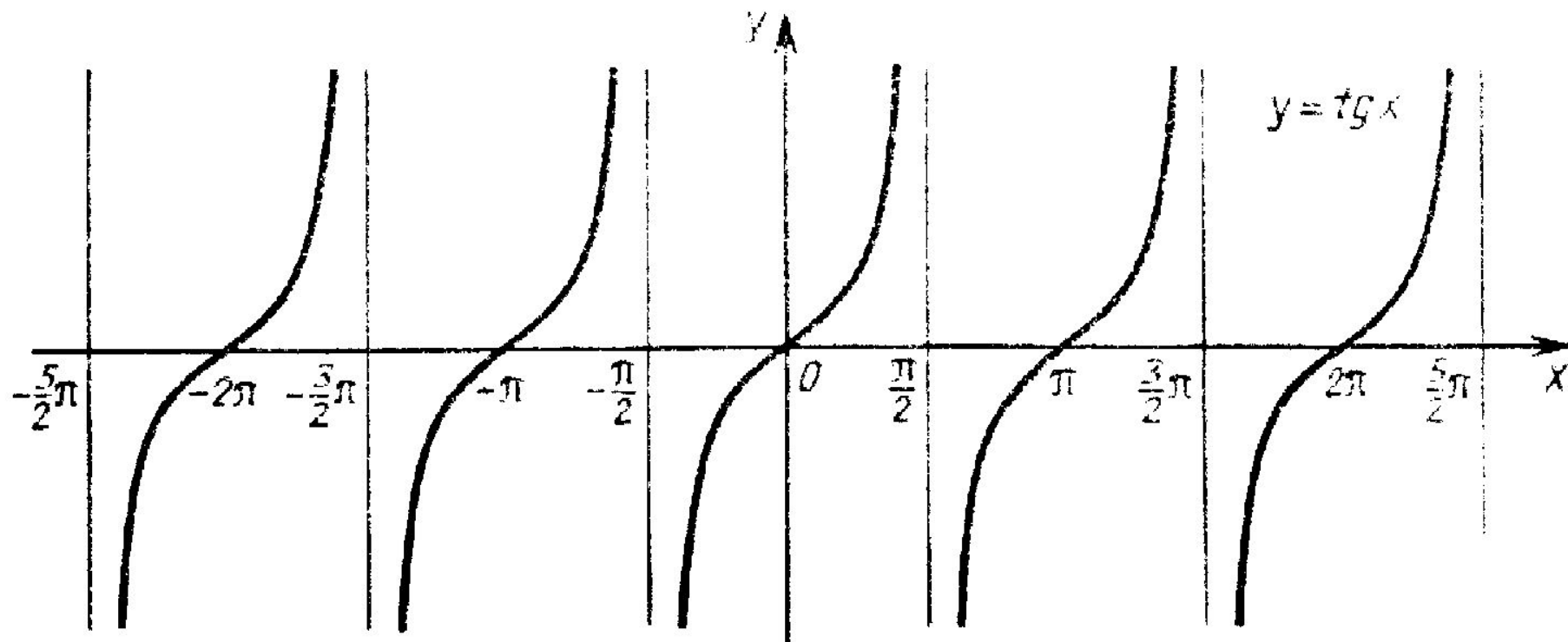
$$\operatorname{tg} \alpha = \frac{y_{\alpha}}{x_{\alpha}}$$



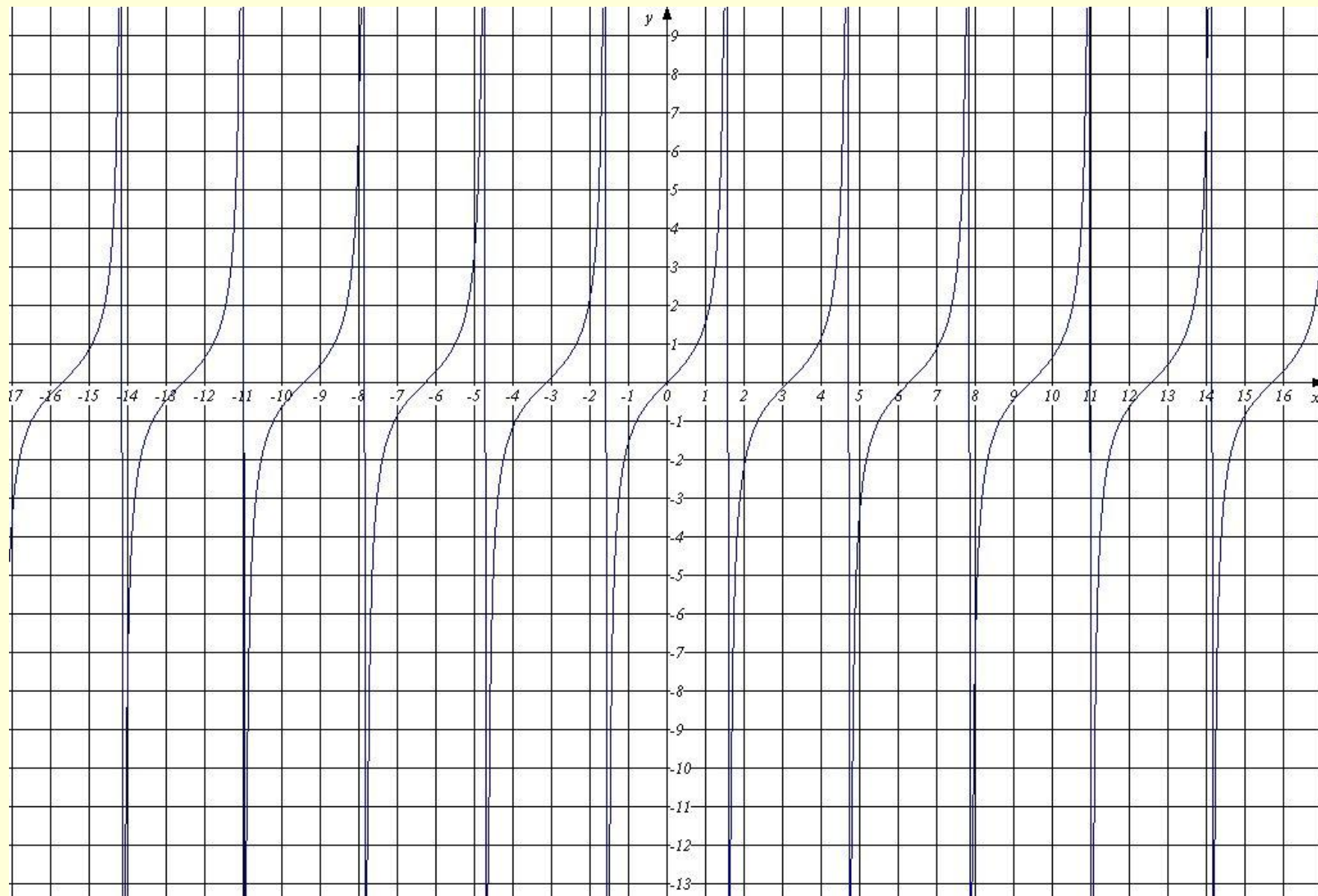
$$y = \operatorname{tg} x$$



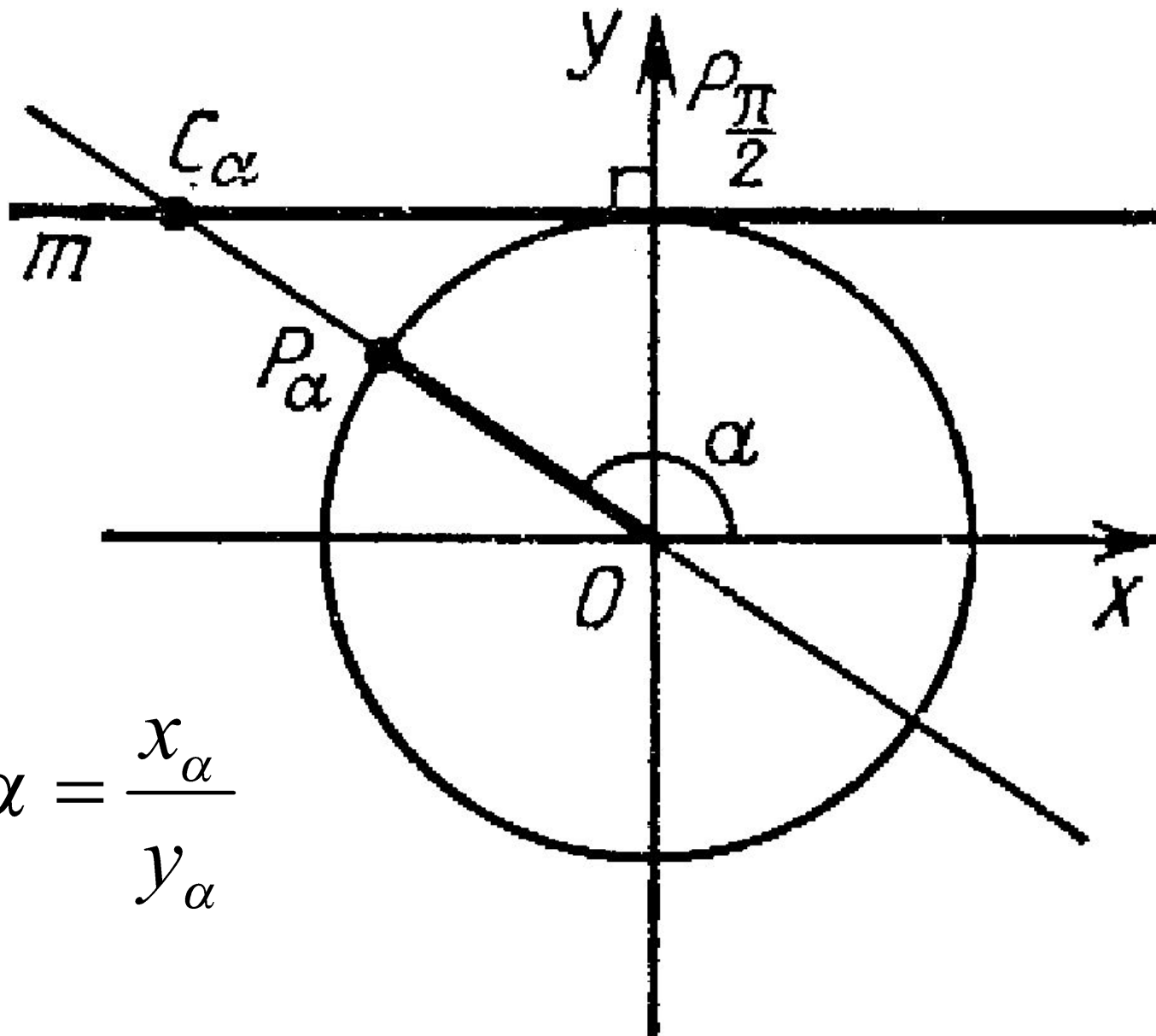
$$y = \operatorname{tg} x$$



$$y = \operatorname{tg}x$$

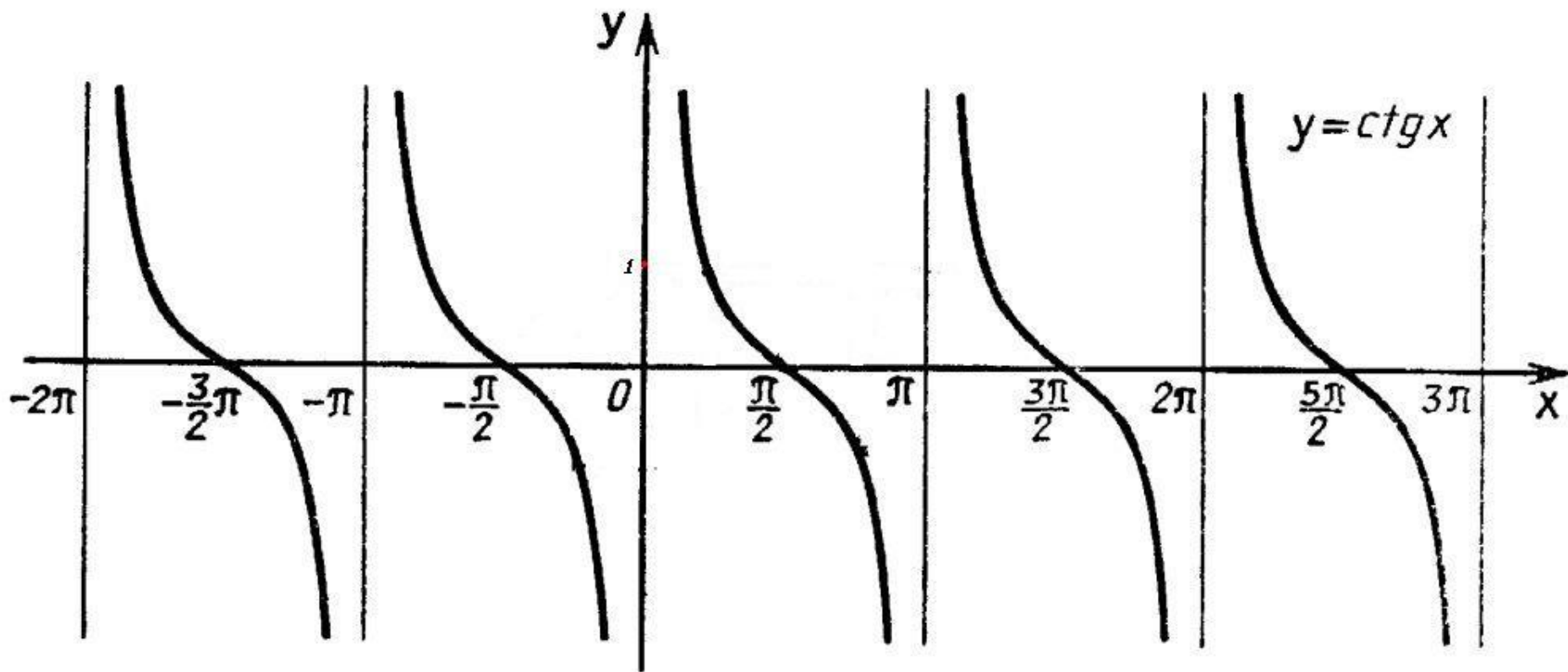


# Линия котангенсов



$$\operatorname{ctg} \alpha = \frac{x_\alpha}{y_\alpha}$$

$$y = \operatorname{ctg} x$$



# Домашнее задание

Построить график функции  
 **$y = \sin(x) + \cos(x)$**