



Man-made wonders of the world

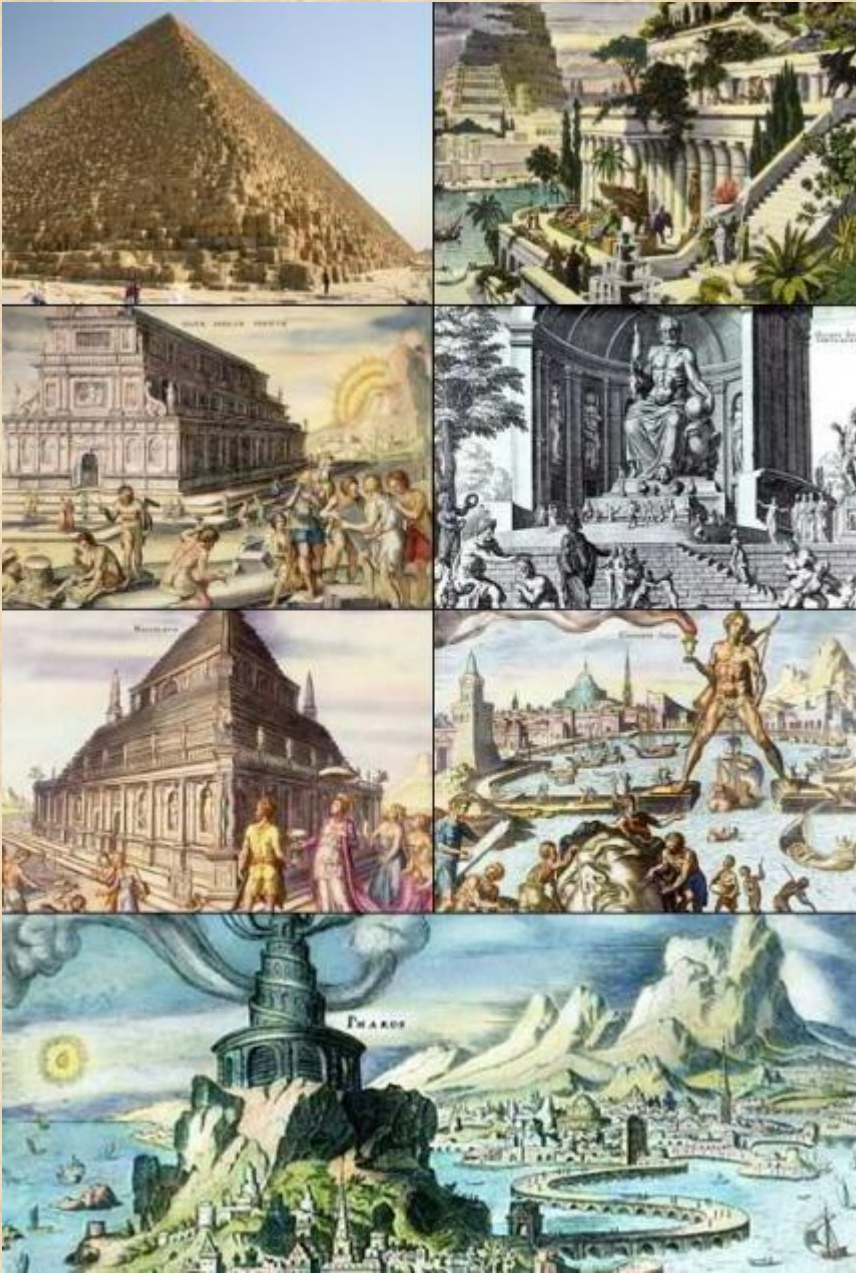


[start](#)

Menu:

- Warm up
- Match the picture and the name
- Vocabulary work
- Listening
- Who had built? How were these objects built?
- Where was it built ? When it was built ?
- Complete the table
- Try to tell about local Wonder

The seven wonders
of the ancient world
(from left to right, top to
bottom):
the Great Pyramid of Giza,
the Hanging Gardens of
Babylon,
the Temple of Artemis at
Ephesus,
the Statue of Zeus at
Olympia,
the Mausoleum of
Halicarnassus,
the Colossus of Rhodes,
the Lighthouse of Alexandria.



Do you know other men-made wonders of the world?

start



1



2



3



4



5

menu

Match the picture and the name



1

Stonehenge



2



3



4



5

Match the picture and the name



1

Hoover Dam



3



3



4



5

Stonehenge

menu

Match the picture and the name



Trans-Siberian Railway



Hoover Dam



Stonehenge

Match the picture and the name



1

Trans-Siberian Railway

English Channel
or the Chunnel



2



3

Hoover Dam



4



5

Stonehenge

Match the picture and the name



1

Trans-Siberian Railway

Panama Canal



2

English Channel or the Chunnel



3

Hoover Dam



4



5

Stonehenge

Well done!!!



1

Trans-Siberian Railway



2

English Channel or the Chunnel



3

Hoover Dam



4

Panama Canal



5

Stonehenge

next

menu

What do they have in common?

I think they

...were
man-made

...were made from stone

...are wonders of the
world

... can impress
everybody

...were difficult to
build

...make peoples life
easier

...were expensive to
build

...were easy to
build

next

menu

Vocabulary work:

гигантский
календарь

<u>religious purpose</u>	
<u>giant calendar</u>	
<u>an Isthmus</u>	
<u>to blast</u>	
<u>to move earth</u>	
<u>transportation link</u>	
<u>convict labour</u>	
<u>to be drafted into</u>	
<u>doubling weight</u>	
<u>give employment</u>	
<u>jobless workers</u>	
<u>explosives</u>	
<u>heavy equipment</u>	
<u>to enable to</u>	

Vocabulary work:

перемещать
грунт

<u>religious purpose</u>	
giant calendar	гигантский календарь
<u>an Isthmus</u>	
<u>to blast</u>	
<u>to move earth</u>	
<u>transportation link</u>	
<u>convict labour</u>	
<u>to be drafted into</u>	
<u>doubling weight</u>	
<u>give employment</u>	
<u>jobless workers</u>	
<u>explosives</u>	
<u>heavy equipment</u>	
<u>to enable to</u>	

Vocabulary work:

безработные
рабочие

<u>religious purpose</u>	
giant calendar	гигантский календарь
<u>an Isthmus</u>	
<u>to blast</u>	
to move earth	перемещать грунт
<u>transportation link</u>	
<u>convict labour</u>	
<u>to be drafted into</u>	
<u>doubling weight</u>	
<u>give employment</u>	
<u>jobless workers</u>	
<u>explosives</u>	
<u>heavy equipment</u>	
<u>to enable to</u>	

Vocabulary work:

быть привлеченным

к

religious purpose	
giant calendar	гигантский календарь
an Isthmus	
to blast	
to move earth	перемещать грунт
transportation link	
convict labour	
to be drafted into	
doubling weight	
give employment	
jobless workers	безработные рабочие
explosives	
heavy equipment	
to enable to	

Vocabulary work:

давать
работу

religious purpose	
giant calendar	гигантский календарь
an Isthmus	
to blast	
to move earth	перемещать грунт
transportation link	
convict labour	
to be drafted into	быть привлеченным к
doubling weight	
give employment	
jobless workers	безработные рабочие
explosives	
heavy equipment	
to enable to	

Vocabulary work:

транспортное
соединение

religious purpose	
giant calendar	гигантский календарь
an Isthmus	
to blast	
to move earth	перемещать грунт
transportation link	
convict labour	
to be drafted into	быть привлеченным к
doubling weight	
give employment	давать работу
jobless workers	безработные рабочие
explosives	
heavy equipment	
to enable to	



Vocabulary work:

религиозные
цели

religious purpose	
giant calendar	гигантский календарь
an Isthmus	
to blast	
to move earth	перемещать грунт
transportation link	транспортное соединение
convict labour	
to be drafted into	быть привлеченным к
doubling weight	
give employment	давать работу
jobless workers	безработные рабочие
explosives	
heavy equipment	
to enable to	

Vocabulary work:

труд
заключенных

religious purpose	религиозные цели
giant calendar	гигантский календарь
<u>an Isthmus</u>	
<u>to blast</u>	
to move earth	перемещать грунт
transportation link	транспортное соединение
<u>convict labour</u>	
to be drafted into	быть привлеченным к
<u>doubling weight</u>	
give employment	давать работу
jobless workers	безработные рабочие
<u>explosives</u>	
<u>heavy equipment</u>	
<u>to enable to</u>	

Vocabulary work:

тяжелое
оборудование

religious purpose	религиозные цели
giant calendar	гигантский календарь
an Isthmus	
to blast	
to move earth	перемещать грунт
transportation link	транспортное соединение
convict labour	труд заключенных
to be drafted into	быть привлеченным к
doubling weight	
give employment	давать работу
jobless workers	безработные рабочие
explosives	
heavy equipment	
to enable to	

Vocabulary work:

перешее

к

religious purpose	религиозные цели
giant calendar	гигантский календарь
an Isthmus	
to blast	
to move earth	перемещать грунт
transportation link	транспортное соединение
convict labour	труд заключенных
to be drafted into	быть привлеченным к
doubling weight	
give employment	давать работу
jobless workers	безработные рабочие
explosives	
heavy equipment	тяжелое оборудование
to enable to	

Vocabulary work:

давать

возможность

religious purpose	религиозные цели
giant calendar	гигантский календарь
an Isthmus	перешеек
to blast	
to move earth	перемещать грунт
transportation link	транспортное соединение
convict labour	труд заключенных
to be drafted into	быть привлеченным к
doubling weight	
give employment	давать работу
jobless workers	безработные рабочие
explosives	
heavy equipment	тяжелое оборудование
to enable to	

Vocabulary work:

взрывает

ь

religious purpose	религиозные цели
giant calendar	гигантский календарь
an Isthmus	перешеек
to blast	
to move earth	перемещать грунт
transportation link	транспортное соединение
convict labour	труд заключенных
to be drafted into	быть привлеченным к
doubling weight	
give employment	давать работу
jobless workers	безработные рабочие
explosives	
heavy equipment	тяжелое оборудование
to enable to	давать возможность

Vocabulary work:

удвоенный

вес

religious purpose	религиозные цели
giant calendar	гигантский календарь
an Isthmus	перешеек
to blast	взрывать
to move earth	перемещать грунт
transportation link	транспортное соединение
convict labour	труд заключенных
to be drafted into	быть привлеченным к
doubling weight	
give employment	давать работу
jobless workers	безработные рабочие
explosives	
heavy equipment	тяжелое оборудование
to enable to	давать возможность

Vocabulary work:

взрывчатые
вещества

religious purpose	религиозные цели
giant calendar	гигантский календарь
an Isthmus	перешеек
to blast	взрывать
to move earth	перемещать грунт
transportation link	транспортное соединение
convict labour	труд заключенных
to be drafted into	быть привлеченным к
doubling weight	удвоенный вес
give employment	давать работу
jobless workers	безработные рабочие
<u>explosives</u>	
heavy equipment	тяжелое оборудование
to enable to	давать возможность

Vocabulary work: Well done!

religious purpose	религиозные цели
giant calendar	гигантский календарь
an Isthmus	перешеек
to blast	взрывать
to move earth	перемещать грунт
transportation link	транспортное соединение
convict labour	труд заключенных
to be drafted into	быть привлеченным к
doubling weight	удвоенный вес
give employment	давать работу
jobless workers	безработные рабочие
explosives	взрывчатые вещества
heavy equipment	тяжелое оборудование
to enable to	давать возможность

next

menu

Listen to the text and try to answer the questions:



1

Trans-Siberian Railway

Who had built?
How were
these objects
built?



2

English Channel or the Chunnel



3

Hoover Dam



4

Panama Canal



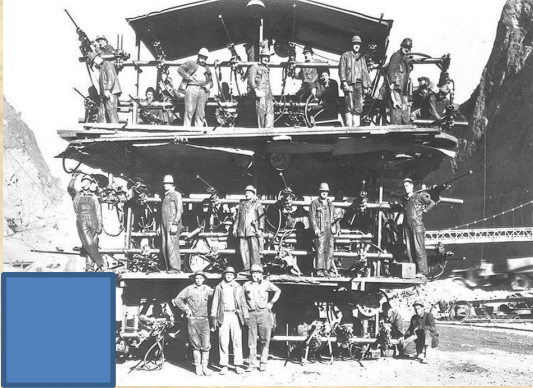
5

Stonehenge

start

menu

Who had built/ How were they built?



Hoover Dam



Stonehenge



English Channel or the Chunnel



Panama Canal



Builders could have used stone tools to shape the stones and wooden rollers, levels and ropes to set them in position.



Trans-Siberian Railway

next

menu

Yes! You are right!
This is about Stonehenge



Builders could have used stone tools to shape the stones and wooden rollers, levels and ropes to set them in position.

Who had built/ How were they built?



Hoover Dam



English Channel or the Chunnel



Panama Canal

Workers had to blast through the stone and use strong machines to move earth.



Trans-Siberian Railway

next

menu

Yes! You are right!
This is about Panama Canal



Workers had to blast through the
stone and use strong machines.

next

Who had built/ How were they built?



Hoover Dam



English Channel or the Chunnel



Panama Canal



Convict labour and soldiers were drafted into building.



Trans-Siberian Railway

next

menu

Yes! You are right!
This is about Trans-Siberian Railway



Convict labour and soldiers
were drafted into building.

next

Who had built/ How were they built?



Hoover Dam



English Channel or the Chunnel



Panama Canal



The construction gave employment jobless workers during the Depression.

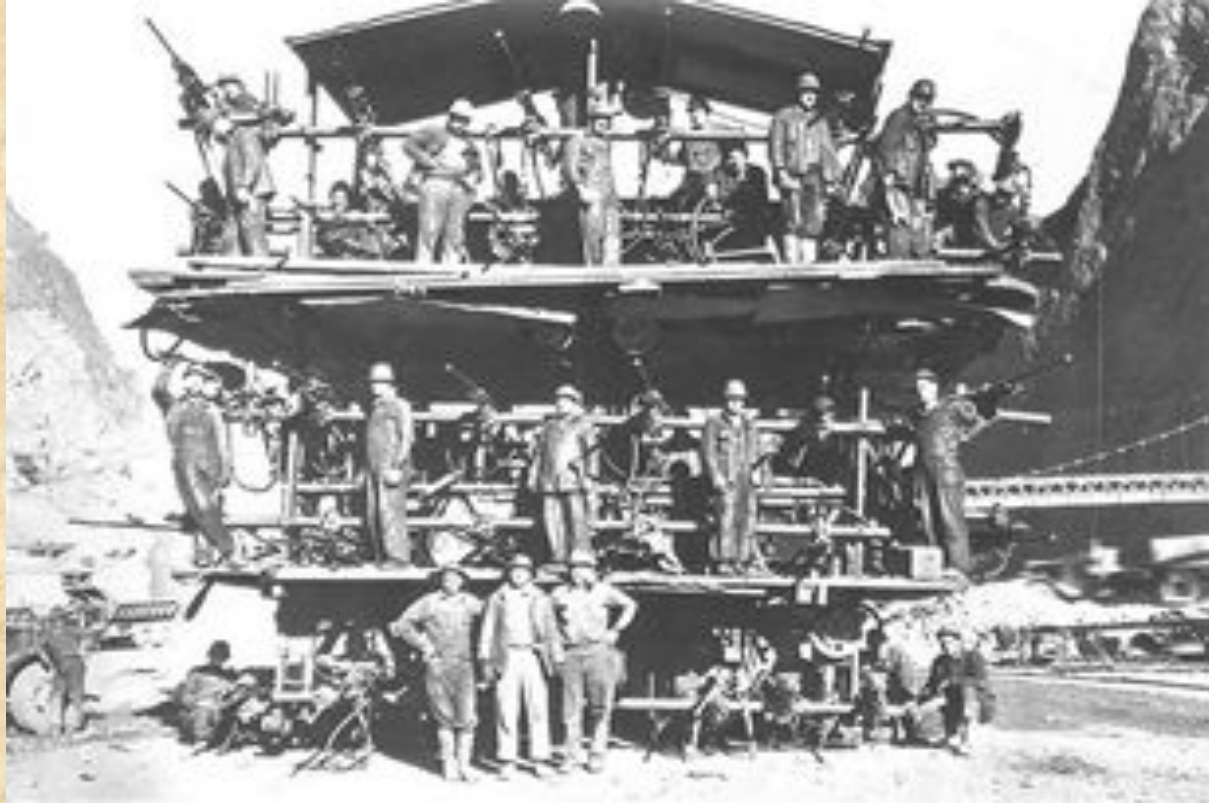


Trans-Siberian Railway

next

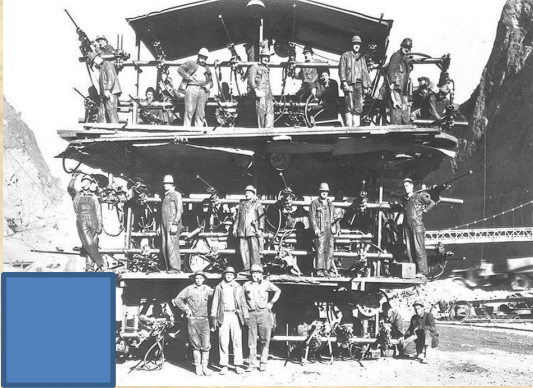
menu

Yes! You are right!
This is about Hoover Dam



The construction gave employment
jobless workers during the Depression.

Who had built/ How were they built?



Hoover Dam



English Channel or the Chunnel



Panama Canal



Workers bored through the ground from both ends.



Trans-Siberian Railway

Yes! You are right!
This is about English Channel or the Chunnel



Workers bored through the
ground from both ends.

next

Good job!!!



Hoover Dam



1. Builders could have used stone tools to shape the stones and wooden rollers, levels and ropes to set them in position
2. Workers had to blast through the stone and use strong machines.
3. Convict labour and soldiers were drafted into building.
4. The construction gave employment jobless workers during the Depression.
5. Workers bored through the ground from both ends.



English Channel or the Chunnel



Panama Canal



Trans-Siberian Railway

next

menu

Listen to the text again and try to answer the questions:

Where was it built ?
When was it built ?



1

Trans-Siberian Railway



2

English Channel or the Chunnel



3

Hoover Dam



4

Panama Canal

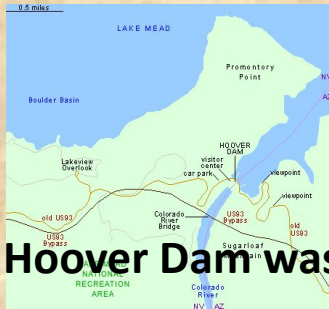


5

Stonehenge

start

Where was it built ? When was it built ?



Hoover Dam was built

On Isthmus of Panama



Stonehenge was built



Panama Canal was built



English Channel

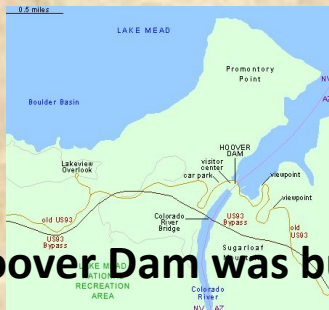


Trans-Siberian Railway was built



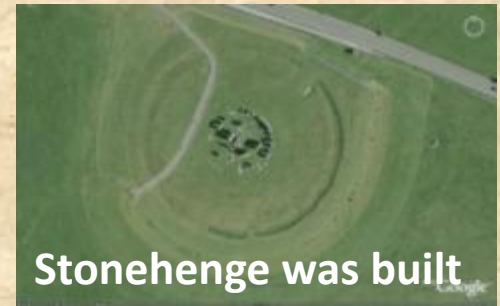
Panama Canal was built in 1882-89, 1904-14 on Isthmus of Panama

Where was it built ? When was it built ?



Hoover Dam was built

In 1891-1916
In Russia, Siberia from
Moscow in Europe to
Vladivostok on the Asian
Pacific Coast



Stonehenge was built



Panama Canal was built

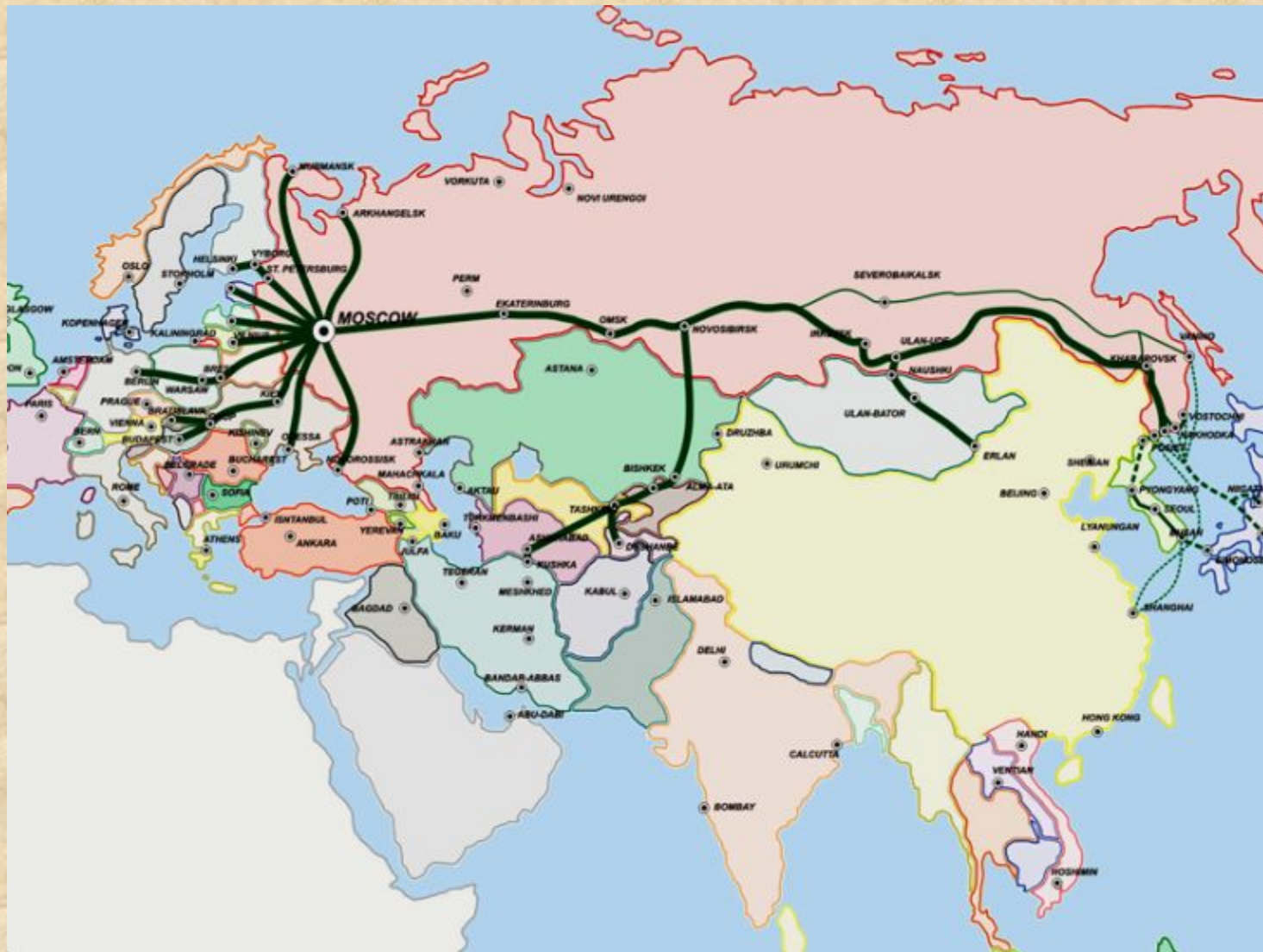


English Channel



Trans-Siberian Railway was built

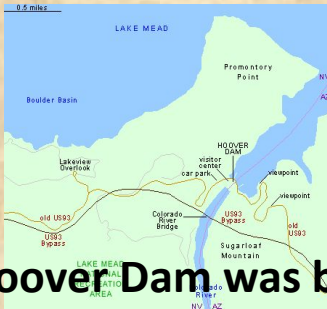
In 1882-89, 1904-14
On Isthmus of Panama



Trans-Siberian Railway was built n 1891-1916 in Russia, Siberia, from Moscow in Europe to Vladivostok on the Asian Pacific Coast.

next

Where was it built ? When was it built ?



Hoover Dam was build

About 3000- 1000 B.C.
in Wiltshire, England



Stonehenge was build



Panama Canal was build



English Channel



Trans-Siberian Railway was build

In 1882-89, 1904-14
On Isthmus of Panama

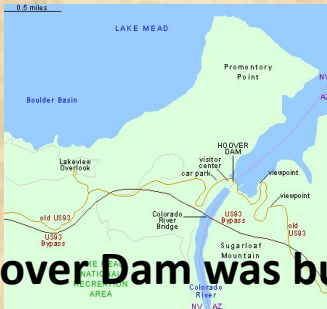
In 1891-1916
In Russia, Siberia from Moscow in
Europe to Vladivostok on the Asian
Pacific Coast



Stonehenge was build about 3000- 1000 B.C. in Wiltshire, England.

next

Where was it built ? When was it built ?



Hoover Dam was build

In 1931- 1936
On Colorado River at the boarder of
Nevada and Arizona (USA)



Stonehenge was build

About 3000- 1000 B.C.
in Wiltshire, England



Panama Canal was build

In 1882-89, 1904-14
On Isthmus of Panama

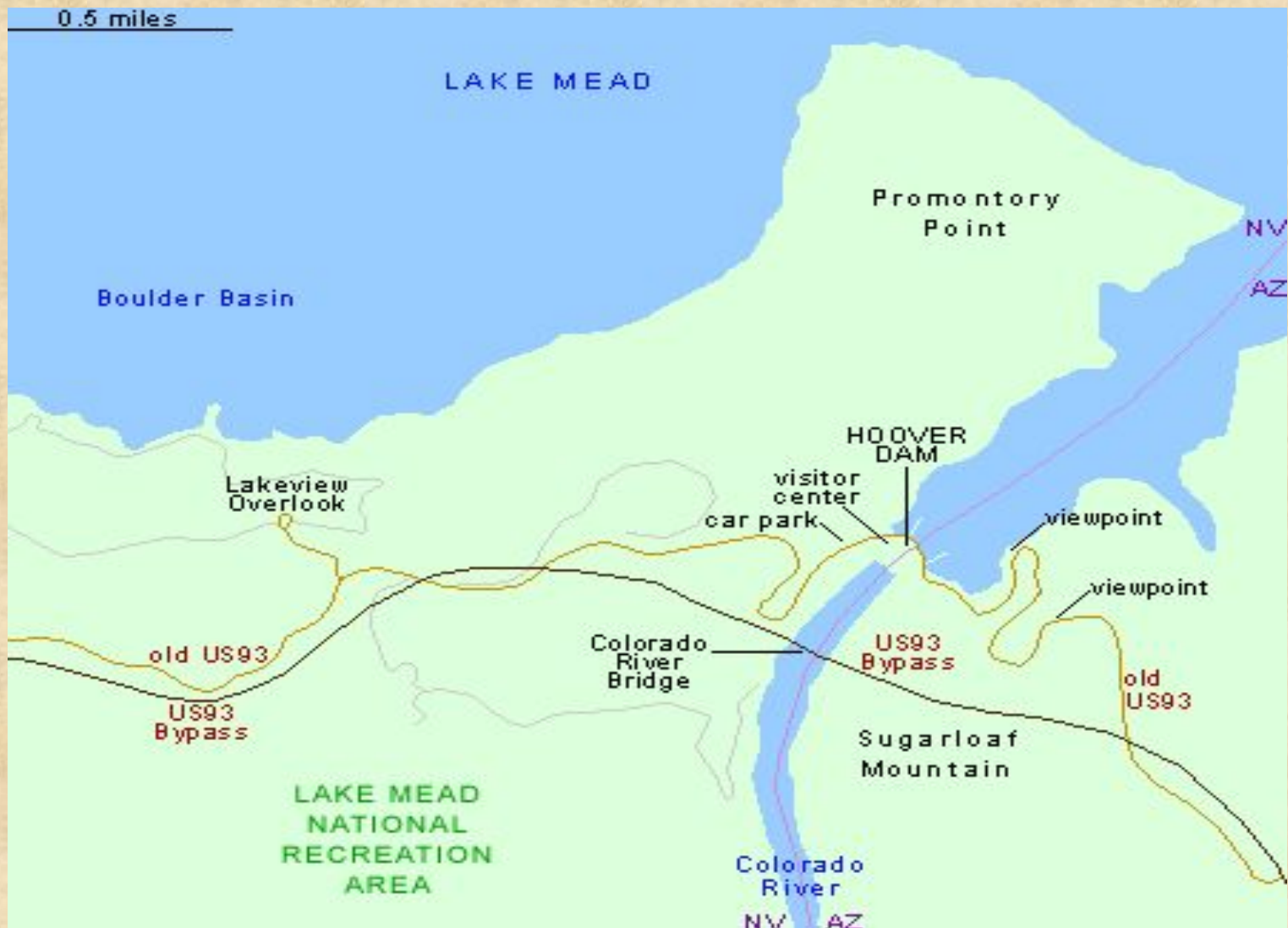


English Channel



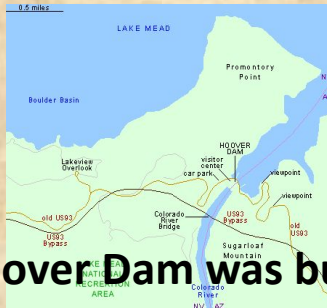
Trans-Siberian Railway was build

In 1891-1916
In Russia, Siberia from Moscow in
Europe to Vladivostok on the Asian
Pacific Coast



Hoover Dam was built in 1931- 1936 on Colorado River at the boarder of Nevada and Arizona (USA)

Where was it built ? When was it built ?



Hoover Dam was build

In 1987-1994
Under the English Channel
from Folkestone, England, to
Coquelles, France.



Stonehenge was build

In 1931- 1936
On Colorado River at the boarder of
Nevada and Arizona (USA)



About 3000- 1000 B.C.
in Wiltshire, England



Panama Canal was build



English Channel

In 1882-89, 1904-14
On Isthmus of Panama



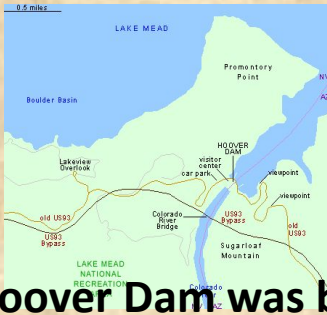
Trans-Siberian Railway was build

In 1891-1916
In Russia, Siberia from Moscow in
Europe to Vladivostok on the Asian
Pacific Coast



English Channel or the Chunnel was built in 1987-1994 under the English Channel from Folkestone, England, to Coquelles, France.

Excellent !!!



Hoover Dam was build

In 1931- 1936
On Colorado River at the boarder of
Nevada and Arizona (USA)



Stonehenge was build

About 3000- 1000 B.C.
in Wiltshire, England



Panama Canal was build

In 1882-89, 1904-14
On Isthmus of Panama



English Channel

In 1987-1994
Under the English Channel
from Folkestone, England, to
Coquelles, France.



Trans-Siberian Railway was build

In 1891-1916
In Russia, Siberia from Moscow in
Europe to Vladivostok on the
Asian Pacific Coast

next

menu

Fill in the missing information in the table, use your Workbook:



	Where	When	Why	How
Stonehenge		About 3000-1000 B.C.		Builders could have used stone tools to shape the stones and wooden rollers to set them in position
Panama Canal	Isthmus of Panama		To make easier to travel between the Atlantic and Pacific Oceans	
Trans-Siberian Railway		1891-1916		
Hoover Dam	Colorado River at the boarder of Nevada and Arizona (USA)			Explosives and heavy equipment enabled builders to create this huge dam.
English Channel or the Chunnel		1987-1994		

next

menu

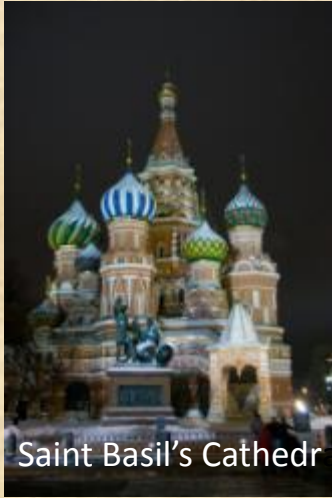
Let's check your answers:

	Where	When	Why	How
Stonehenge	Wiltshire, England	About 3000-1000 B.C.	No one knows for what sure. Stonehenge may have been for religious purposes or served as a giant calendar.	Builders could have used stone tools to shape the stones and wooden rollers to set them in position
Panama Canal	Isthmus of Panama	1882-89, 1904-14	To make easier to travel between the Atlantic and Pacific Oceans	Workers had to blast through stone and use strong machines to move earth
Trans-Siberian Railway	Russia, Siberia from Moscow in Europe to Vladivostok on the Asian Pacific Coast	1891-1916	To provide an adequate transportation link between European and its Far Eastern provinces.	Convict labour, from Sakhalin Island and other places. Russian soldiers were drafted into building the Railway. Electrification on the line, begun in 1929 and completed in 2002, allowed a doubling of train weight to 6,000 tonnes.
Hoover Dam	Colorado River at the boarder of Nevada and Arizona (USA)	1931- 36	To employ jobless workers during the Depression and produce electricity for California, Arizona and Nevada	Explosives and heavy equipment enabled builders to create this huge dam.
English Channel or the Chunnel	Under the English Channel from Folkestone, England, to Coquelles, France.	1987-1994	To link Great Britain and mainland Europe	Using high-tech drilling equipment, workers bored through the ground from both ends.

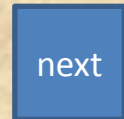
next

menu

Try to tell about local Wonder:



Where?	When?	Why?	How?
--------	-------	------	------



<http://library.thinkquest.org/J002388/>

http://en.wikipedia.org/wiki/Seven_Wonders_of_Russia

end

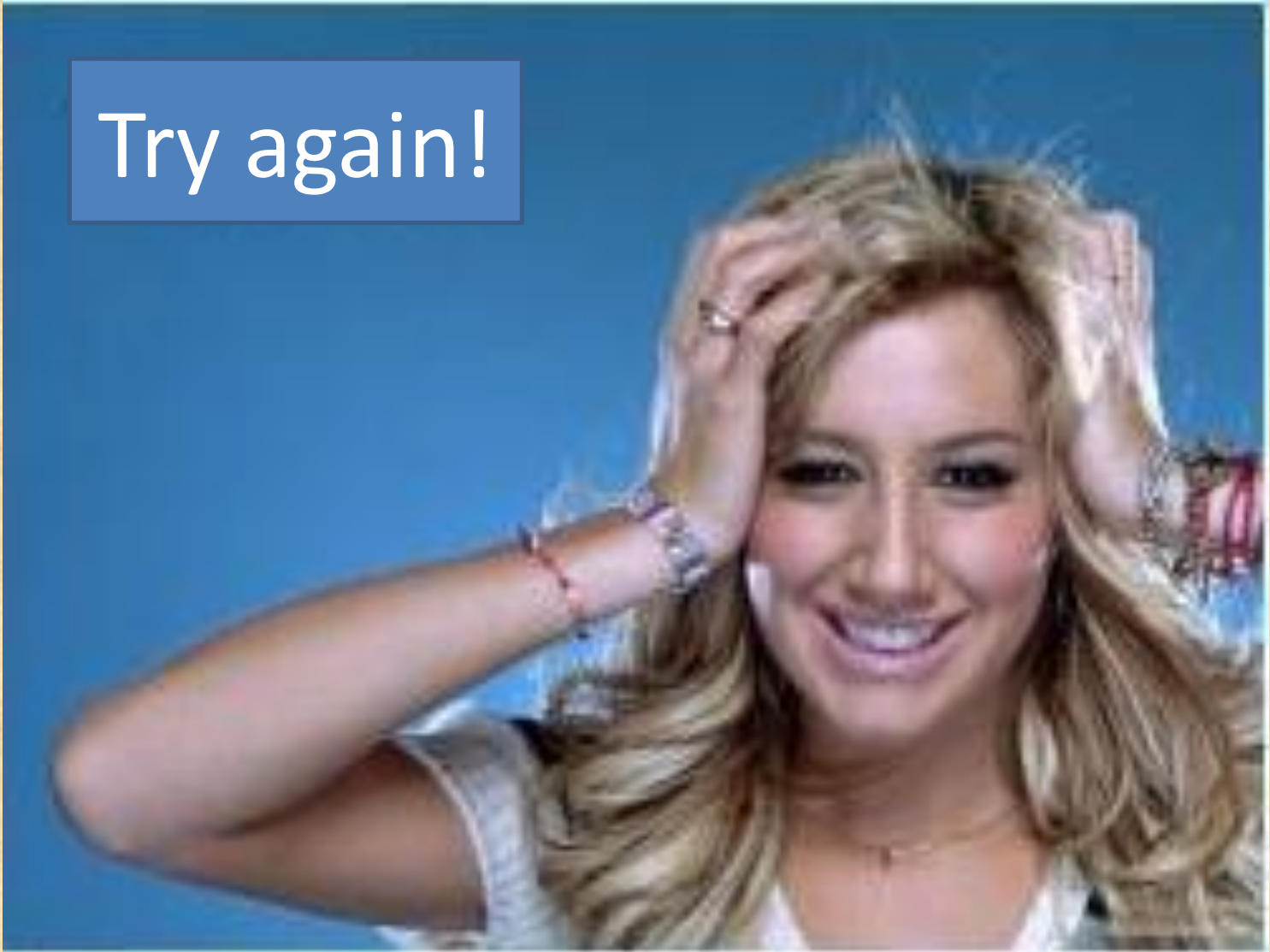
menu

A ginger cat is sitting upright on a blue tiled floor, looking directly at the camera. The cat has orange fur with white stripes and whiskers. The background shows a wooden door and a grey cabinet. The text "You are mistaken..." is overlaid in white on the cat's body.

You are mistaken...

[back](#)

Try again!



[back](#)



No way !

