



Great Britain.

WELCOME

ВЕЛИКОБРИТАНИЯ

Официальное название.

Великобритания.

Географическое положение.

Страна расположена на северо-западе Европы. Занимает остров Великобритания (на нем находятся Англия, Шотландия, Уэльс) и часть острова Ирландия. Омывается водами Атлантического океана и Северным морем. Отделена от материка проливом Ла-Манш. Площадь страны – 243 тыс. кв. км.

Высшая точка. Бен-Невис в Шотландии (1343 м).

Климат. Умеренный океанический.

Столица. Лондон (9 млн.чел.).

Время. Время отстает от московского на 3 часа.

Политическая система.

Великобритания – это конституционная монархия.

Законодательная власть в стране принадлежит парламенту. Он состоит из двух палат –

палаты Общин и Палаты лордов. Во главе государства – королева Елизавета II (представительные функции).

Население. 60 млн.человек. Англичане – 70%, шотландцы – 9%, Ирландцы – 4%, уэльсцы -1%.

Официальный язык. Английский.

Религия. Протестанты (90%)













ON
Please help us
to make the
city better.















Around Britain

1. The UK consists of

- a) England
- b) England, Scotland and Wales
- c) England, Scotland, Wales and Northern Ireland

2. What is the symbol of England?

- a) a thistle
- b) a red rose
- c) a daffodil

3. The Queen's official London home is

- a) Windsor Castle
- b) Buckingham Palace
- c) The Tower of London

4. When did the Vikings invade England?

- a) in 793
- b) in 1242
- c) in 1699

5. Where do men wear kilts?

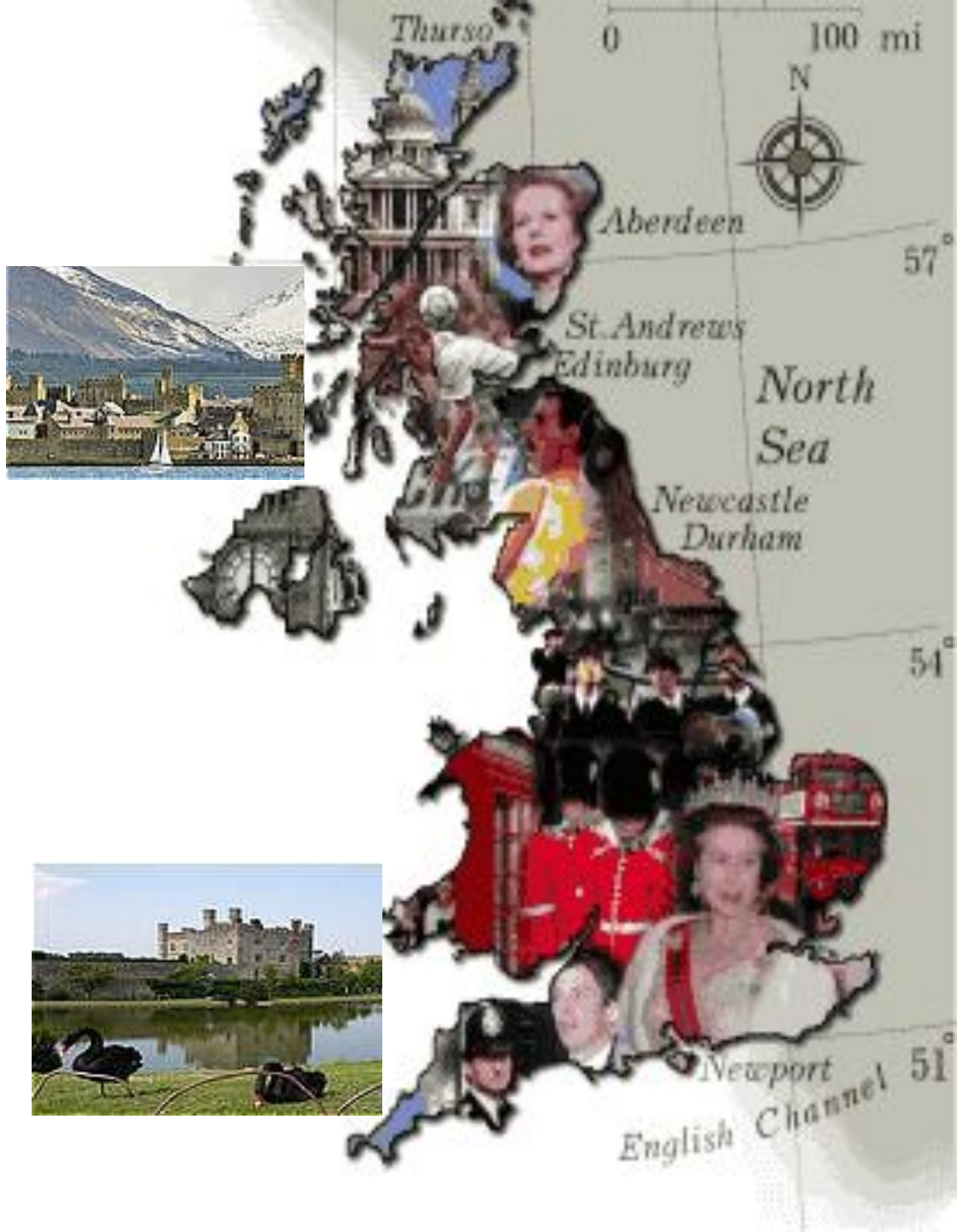
- a) in England
- b) in Scotland
- c) in Wales



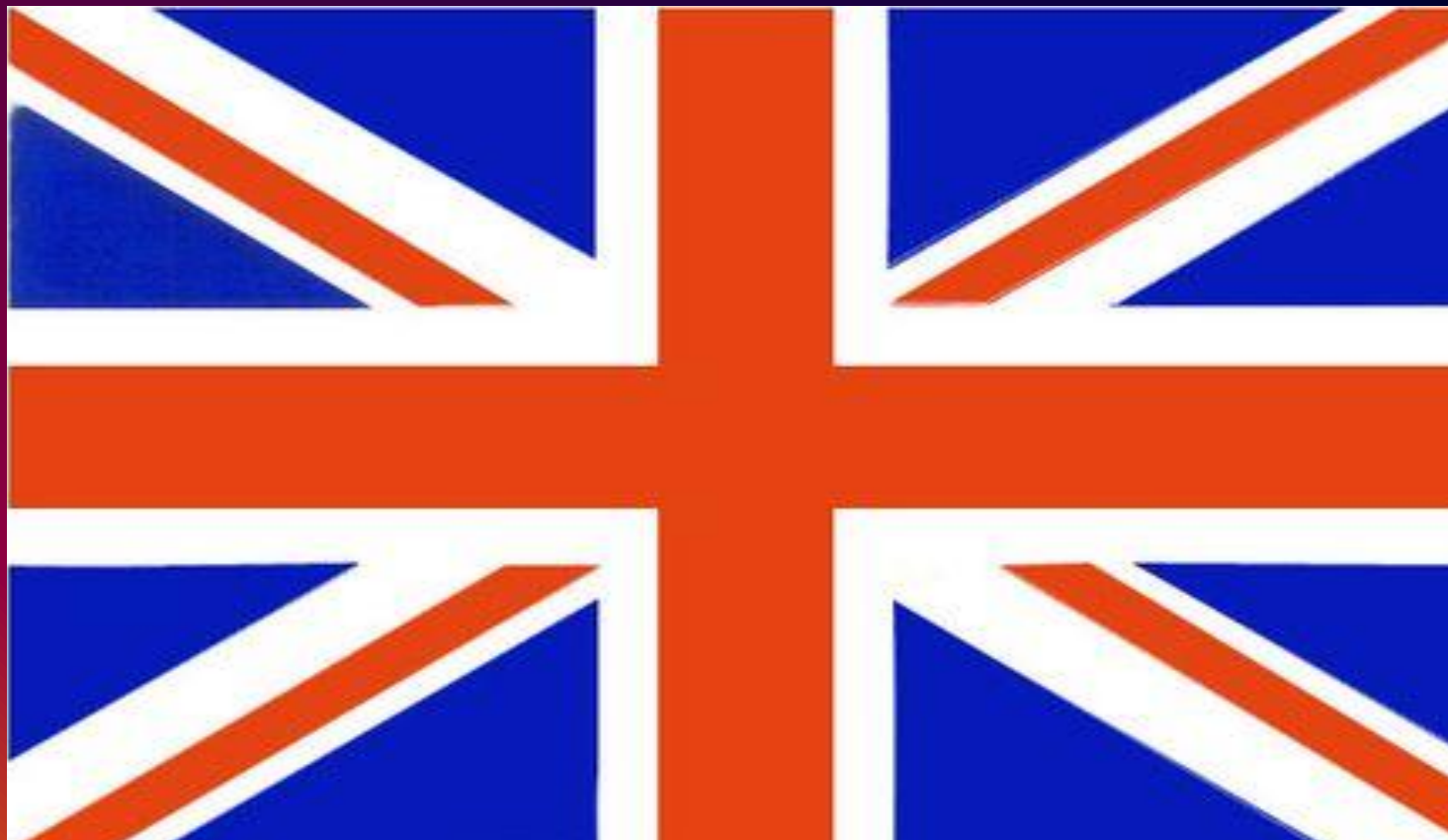


The UK lies on the British Isles. Great Britain is separated from the continent by the English channel. The country is washed by the waters of the Atlantic ocean. Great Britain is separated from Belgium and Holland by the North Sea and from Ireland by the Irish Sea.





THE UNITED KINGDOM OF GREAT BRITAIN AND NORTHERN IRELAND



This is the flag of Great Britain, The British people call it "the Union Jack". It is red, white and blue.

St. Andrew's Cross 1: 1801

THIS IS THE COAT OF ARMS OF GREAT BRITAIN.







HENRY VIII
(1491-1547)



QUEEN ELIZABETH I
(1533-1603)



QUEEN VICTORIA
(1819-1901)



The Queen Elizabeth II

The Royal Family



At present the British royal family is headed by Queen Elizabeth II.

She was born on the 21st of April 1926, As a child she studied constitutional history and law as well as art and music. The marriage of the young Princess Elizabeth to Philip Duke of Edinburgh took place in November 1947. She come to the throne after her father's death in 1952 and was crowned in Westminster Abbey in June 1953.

Among Queen Elizabeth's many duties are the regular visits she makes to Foreign countries, and especially those of the commonwealth.

The Queen is widely known for her interest in horses and horse-racing. She is now president of the Save the Children Fond, Chancellor of the University of London and carries out many public engagements.

The Queen Elizabeth

Как ты знаешь, В Великобритании главой государства является монарх. Сейчас на британском престоле находится королева Елизавета II. Она царствует с 1952 года. Муж королевы, принц Филипп, граф Эдинбургский, королем не является, его титул – принц-консорт. Дело в том, что престол в этой стране в первую очередь наследуется старшим сыном, а если его нет, то старшей дочерью. Таким образом, после Елизаветы II престол должен унаследовать ее старший сын, Чарльз, принц Уэльский, а после него старший сын, принц Уильям.

**The British national anthem begins with the words about the Queen:
“God save the Queen” because the Queen is at the head of the state and she is the most important person in the country.**

*** * ***

*** * ***

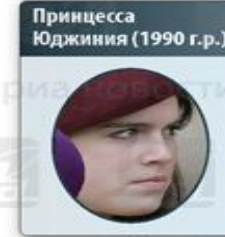
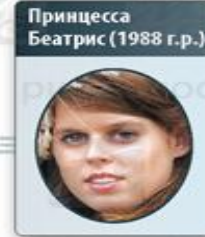
God save our gracious Queen,	Господь, храни нашу
Long live our noble Queen,	всемилодную Королеву,
God save the Queen –	Да здравствует,
Send her victorious,	наша благородная Королева,
Happy and glorious,	Господь, храни Королеву -
Long to reign over us,	Пошли ей, победоносной,
God save the Queen.	Долгого правления над нами.
	Господь, храни Королеву.

The Royal Family

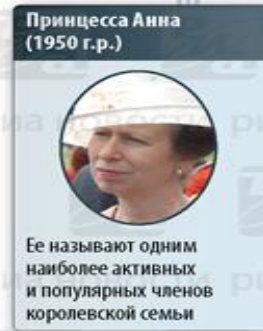
Драгунского полка Марка Филиппа
(с которым находится в разводе с 1992 г.):



Дети от Сары, герцогини Йоркской
(с которой находится в разводе с 1996 г.):



Дети от покойной принцессы Дианы:



Дети от Софи Рис-Джонс
(с которой вступил в брак в 1999 г.):



17 декабря у Эдварда
и Софи родился сын –
уже известно, что
он будет носить титул
виконта Северна
и станет восьмым
в линии престоло-
наследия





Political Life

Political System of Britain

THE MONARCH

The official head of state and an integral part of Parliament in her constitutional role; has mostly representative functions.

THE GOVERNMENT

The Prime Minister

Is the head of government; is the leader of the party with the majority seats in the House of Commons

The Cabinet (about 20 ministers)

PARLIAMENT

The House of Commons

(about 650 elected MPs)

Makes laws; discusses political Problems

The House of Lords

(over 100 permanent, non-elected

members; peers and life peers)
Examines and revises bills from the House of Commons; can delay bills for one year

THE PEOPLE (all men and women over 18)



The Houses of Parliament with Big Ben

Great Britain



Gordon Brown

The Prime Minister

The British Prime Minister lives at 10 Downing Street

Л О Н Д О Н



Лондон - столица Британии. Это очень старый город. Он расположен на берегах р. Темзы. Лондон состоит из трех частей: the City of London, the West End, the East End.

The City of London – это самая старая часть города. Здесь много банков, фирм, официальных магазинов. Это деловая часть Лондона.

The West End – центр Лондона. Здесь много достопримечательностей. Например: Дом Парламента (The House of Parliament), знаменитые часы Big Ben, которые были построены в 1859 году. Это самые большие часы страны, их вес 13,5 т.

Сейчас Лондон- важный политический центр, рай для театралов и туристов.





**As well as being the capital of England,
London is the capital of the United Kingdom.**

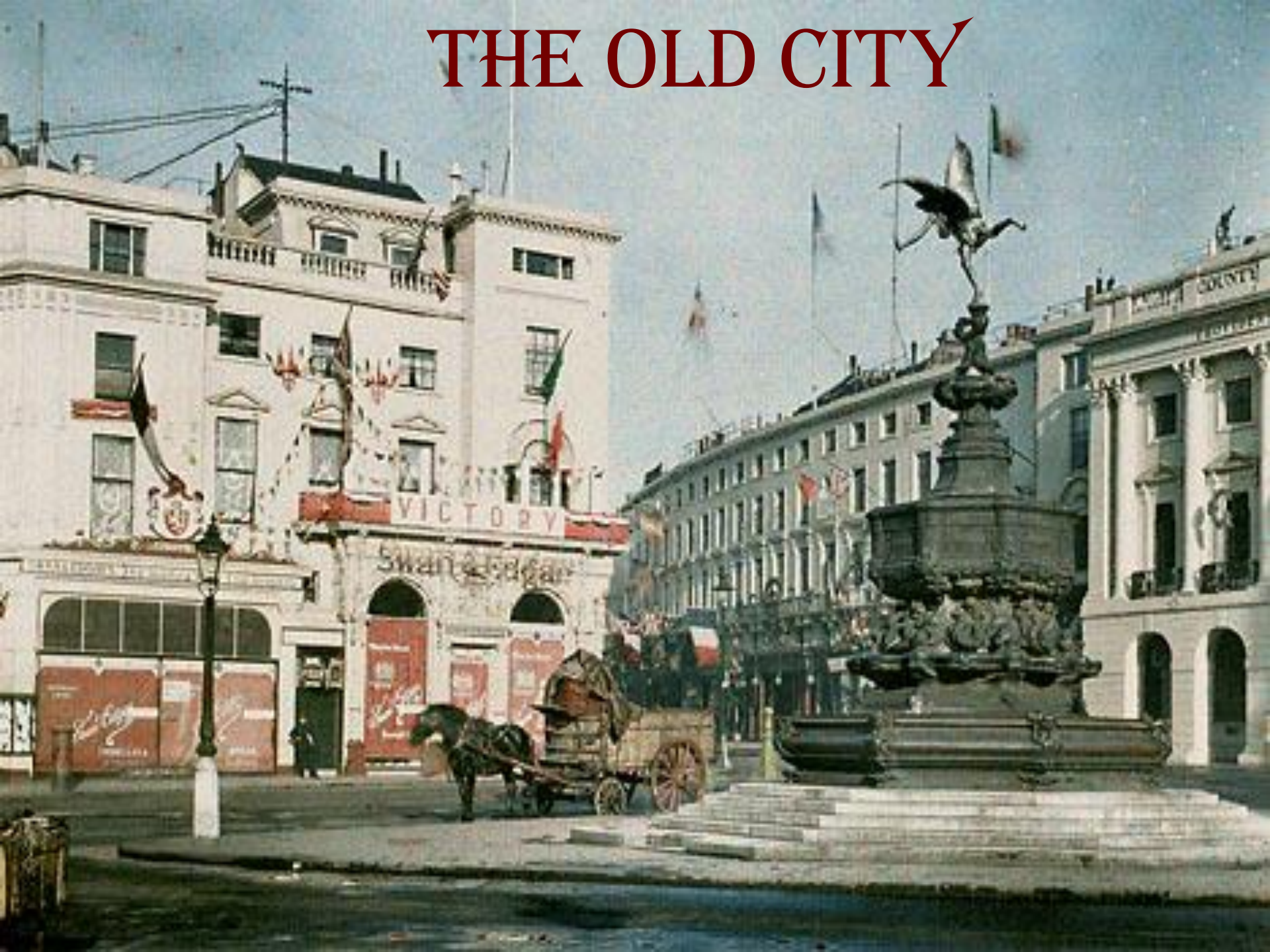
History of London





London is the oldest city.

THE OLD CITY





The image is a detailed street map of London, showing various districts including Westminster, City of London, Islington, Hackney, Tower Hamlets, and Lambeth. The River Thames flows through the center. Overlaid on the map is the text "LONDON TRAFFIC" in large, bold, blue, sans-serif capital letters. The text is positioned horizontally across the middle of the map, with "LONDON" on the top line and "TRAFFIC" on the bottom line. The background map shows a dense network of streets, parks, and landmarks, with the River Thames and several bridges clearly visible.

LONDON TRAFFIC

Municipal service

Transport for London answers for a municipal transportation of London. In particular, it maintains the underground, buses and trams of London and licences city taxi and water public transport.



Routemaster



The well-known buses of model Routemaster which has become by one of symbols not only London, but also all Great Britain, have been removed from linear operation in 2005 and now go only on excursion routes. Buses serve for local movings. There are 700 routes on which buses transport at week-days to 6 million



Black London taxi is the same characteristic detail of a city, as well as red buses though today they already happen the most different colours. The improved version of a black taxi has been developed also new. The included yellow sign over a windscreen means, that the taxi is free; to lift a hand enough to stop it.

It is possible for the taxi order to call in
Radio Taxis:
Tel: +44 (020) 7272 0272;
the fare will be included in payment of
such taxi to a place of your finding also.

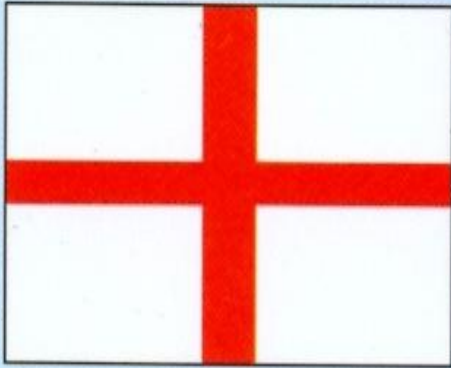
"Black cabs"

Underground of London

Underground of London — the oldest in the world. It continuously works since 1863 and daily transports 3 million passengers, that in a year makes number, about equal to 1 billion person. The London underground consists of 12 lines, the majority from which connect city centre with its suburbs. Londoners often name underground “TUBE”



ENGLAND



ENGLAND

Capital: London

National flower: rose

Patron Saint: St. George

Size: 130,281 sq km

Population: 50.1 million

Language: English



ENGLAND



The flag of England – St. George's flag which has a red cross with extended horizontals on a white field.

ENGLAND

Англия – самая большая и самая богатая страна Великобритании. Столица Англии – Лондон; но существуют и другие важные города, например, Бирмингем, Ливерпуль, Манчестер, Йорк, Честер, Оксфорд и Кембридж.

Оксфорд – это родина самого старого университета. Самый известный колледж – Крайст Черч. Кембридж – родина второго самого старого британского университета.

Йорк был столица Северной Англии. Сейчас это один из наиболее сохранившихся средневековых городов Европы (он был построен римлянами, завоеван англосаксами и управлялся викингами).

Аэропорт Хитроу расположен в 33 км к западу от Лондона.

Честер – очень важный город на северо-западе Англии. В прошлом это был римский форт. В Честере находится знаменитый музей, в котором собрано более 5 000 древних и современных игрушек.

Бирмингем часто называют «городом 1500 ремесел» из-за большого количества отраслей промышленности.



Englan



The Lake District an area of lakes and mountains in the north-west of England



London

London



London



Manchester is the cotton centre of Great Britain



Liverpool



York



Greenwich



Greenwich



Greenwich and one of the largest single green spaces in south east London. One of the Royal Parks of London, and the first to be enclosed (in 1433), it covers 183 acres (0.7 km²) and is part of the Greenwich World Heritage Site. It commands fine views over the River Thames, Isle of Dogs and the City of London. The park is open from 6.00am for pedestrians (and 7.00am for traffic)

SCOTLAND



SCOTLAND

Capital: Edinburgh

National flower: thistle

Patron Saint: St. Andrew

Size: 77,925 sq km

Population: 5 million

Languages: English, Scottish Gaelic,
Scots



SCOTLAND



The flag of Scotland – St. Andrew's flag which has a white cross on a blue field.

SCOTLAND



Шотландия – страна на севере Великобритании. Она разделена на три области: Южные возвышенности, Центральные низменности и высокогорья, острова.

Столица Шотландии – Эдинбург. Глазго – промышленная столица Шотландии.

Гольф – шотландская национальная игра. Это страна мифов и загадок. Все знают о лох-несском чудовище. Говорят, «Несси» имеет длину 6 метров.



Edinburgh – is the capital of Scotland. Old Edinburgh was a long, narrow town. Edinburgh is a city where the historic past lives side by side with the present, for centuries the home of Scotland's King and Queen.

Edinburgh



Edinburgh



Edinburgh





BUS STOP TEMPORARILY OUT OF USE

NUMBER 10

**Glasgow is the industrial,
commercial, artistic and sporting
centre of Scotland.**



*Loch Ness is a lake
in Scotland*



WALES



WALES

Capital: Cardiff

National flower: daffodil

Patron Saint: St. David

Size: 20,732 sq km

Population: 2.95 million

Languages: English, Welsh



W A L E S



The flag of Wales is green, red and white.

W A L E S



Уэльс – это страна на востоке Великобритании. Это, главным образом, гористая местность с преобладающей сельскохозяйственной экономикой и промышленностью.

Кардифф – столица Уэльса с 1955 года. С 1536 года Уэльс управляется Англией, и наследник английского престола носит титул принца Уэльского.

Уэльский язык происходит от древнекельтского языка. В 60-х годах ему присвоен статус официального языка.

Cardiff is the capital of Wales



Cardiff is the capital of Wales and a large port. It has many industries. Some of the main buildings are Cardiff Castle, built in the 11th century, the National Museum of Wales, the Public Library, University College and City Hall (городская ратуша). The National Museum of Wales and City are shown in this picture.



Cardiff. City Hall.



Rapture
HAIR STUDIO

THE COLLAGE



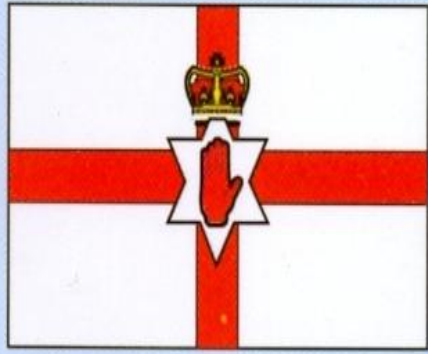
50%

50%

50%

50%

Northern Ireland



NORTHERN IRELAND

Capital: Belfast

National flower: shamrock

Patron Saint: St. Patrick

Size: 13,576 sq km

Population: 1.7 million

Languages: English, Irish

Northern Ireland



The flag of Northern Ireland – St. Patrick's flag which has a red cross on a white field. The arms of the crosses do not meet at the centre.



Северная Ирландия, известная как Ольстер, также является частью Великобритании. Она состоит из шести частей: Антрим, Даун, Ферманаг, Лондондерри и Тирон.

Ирландское население делится на две группы: протестантов и католиков. Протестанты британского происхождения (они являются потомками британских поселенцев XVI-XVII вв.). Католики – уроженцы Ирландии. Борьба между двумя группами населения продолжается и по сей день.



Northern Ireland



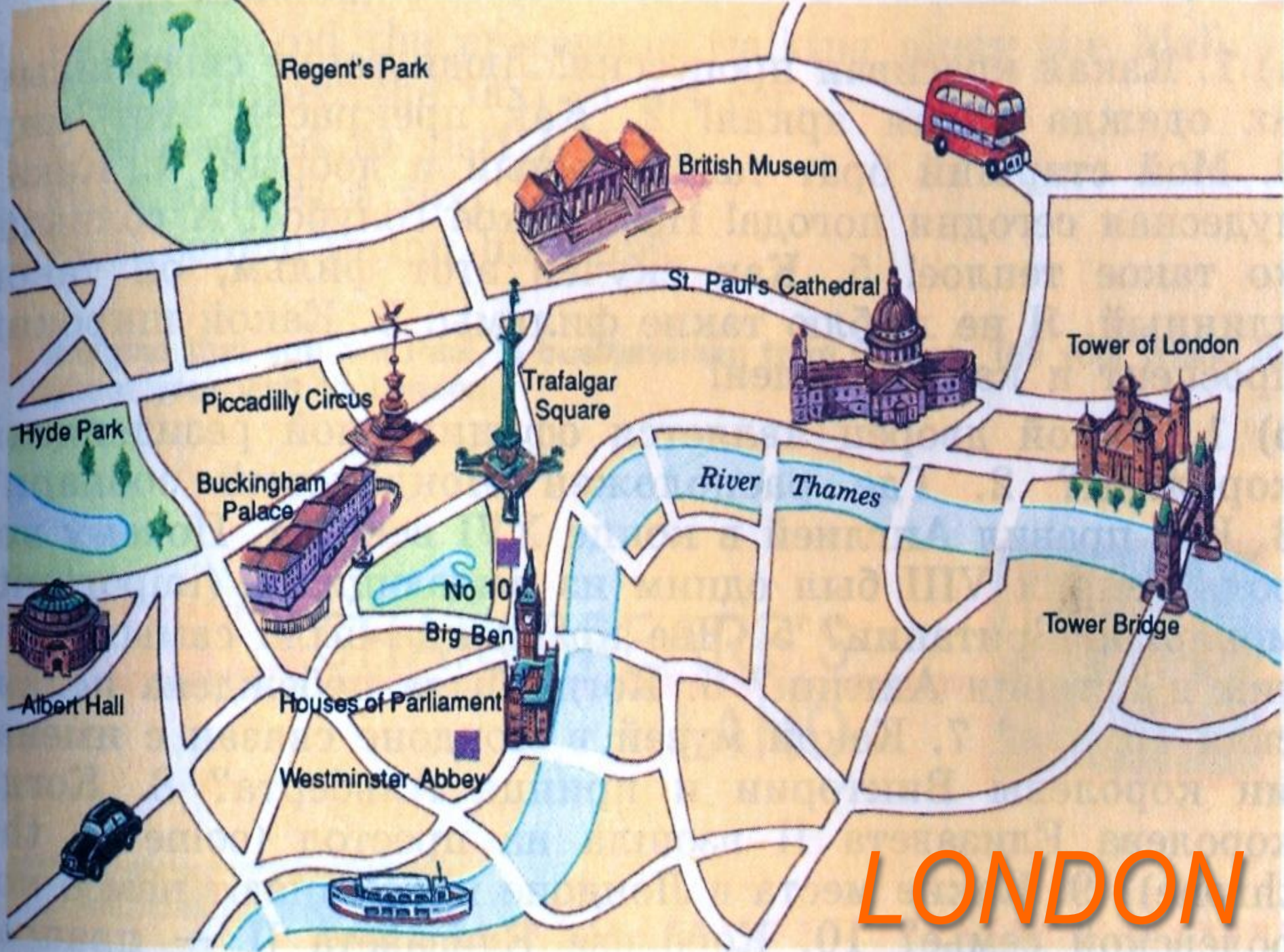
Belfast



Belfast

Place of Interest in Great Britain





Regent's Park

British Museum

St. Paul's Cathedral

Tower of London

Hyde Park

Piccadilly Circus

Trafalgar Square

Buckingham Palace

River Thames

Albert Hall

No 10

Big Ben

Tower Bridge

Houses of Parliament

Westminster Abbey

LONDON



Symbols of London



The House of Parliament with Big Ben



LITTLE BEN.



Little Ben is a cast iron miniature clock tower, situated at the intersection of Vauxhall Bridge Road and Victoria Street, in Westminster, central London, close to the approach to Victoria station. In design it mimics the clock tower commonly (though incorrectly) known as Big Ben of the Palace of Westminster found at the other end of Victoria Street. Little Ben was manufactured, according to Pevsner, by Gillett & Johnston of Corydon, and was erected in 1892; removed from the site in 1964, and restored and re-erected in 1981 by Westminster City Council with sponsorship from Elf Aquitaine Ltd "offered as a gesture of Franco-British friendship".

There is a rhyming couplet Apology for Summer Time signed J.W.R. affixed to the body of the clock:

My hands you may retard or may advance my
heart beats true for England as for France. A
replica of Little Ben was constructed in 1903
in Victoria, a capital city of Seychelles.

Westminster Abbey





Westminster Abbey is a church in Westminster, near the House of Parliament. The present building was started in 1245. Most British kings and queens were crowned there. The Many great Englishmen were buried in the Abbey: Newton, Darwin



Westminster Abbey

The Battle of Britain.

The Battle of Britain Monument in London is a sculpture on the Victoria Embankment overlooking the River Thames in central London, England which pays tribute to those who took part in the Battle of Britain during World War II. It was unveiled on 18 September 2005, the 65th anniversary of the Battle, by His Royal Highnesses the Prince of Wales and Her Royal Highness the Duchess of Cornwall in the presence of many of the surviving airmen known collectively as "The Few", following the Royal Air Force Service of Thanksgiving and Rededication on Battle of Britain Sunday. This service is an annual event, taking place annually since 1943; the first service took place in St Paul's Cathedral and since has taken place in Westminster Abbey. The monument was brilliantly conceived by Bill Bond.



ADMIRALTY ARCH.

Admiralty Arch is a large office building in London which incorporates an archway providing road and pedestrian access between The Mall, which extends to the southwest, and Trafalgar Square to the northeast. It was designed by Sir Aston Webb, constructed by John Mowlem & Co and completed in 1912. It adjoins the Old Admiralty Building, hence the name. The building was commissioned by King Edward VII in memory of his mother Queen Victoria, although he did not live to see its completion.

A famous feature of Admiralty Arch is its "nose". On the inside wall of the northernmost arch there is a small protrusion the size and shape of a human nose. The nose is at a height of about seven feet, and would sit at waist high for anyone riding through the arch on a horse. Tradition holds that it is Napoleon's nose.



The Buxton Memorial Fountain.



The Buxton Memorial Fountain is a memorial in London, the United Kingdom, that commemorates the emancipation of slaves in the British Empire in 1834. It was designed by Gothic architect Samuel Sanders Teulon (1812-1873) in 1865. It was originally constructed in Parliament Square, removed in 1940 and moved to its present position in Victoria Tower Gardens in 1957. There were eight decorative figures of British rulers on it, but four were stolen in 1960 and four in 1971. They were replaced by fiberglass figures in 1980. As of 2005 these are missing, and the fountain is no longer working. In autumn 2006 restoration works were started, and finished in February 2007. The restored fountain was unveiled on 27 March 2007 as part of the commemoration of the 200th anniversary of the act to abolish the slave trade [1]. A memorial plaque commemorating the 150th anniversary of the Anti-Slavery Society was added in 1989.

The Albert Memorial.



The Albert Memorial is situated in Kensington Gardens, London, England, directly to the north of the Royal Albert Hall. It was commissioned by Queen Victoria in memory of her beloved husband, Prince Albert of Saxe-Coburg-Gotha who died of typhoid in 1861, and designed by Sir George Gilbert Scott in the Gothic revival style. Opened in 1872, with the statue of Albert ceremonially "seated" in 1875, the memorial consists of an ornate canopy or pavilion containing a statue of Prince Albert facing south. This is surrounded by the elaborate sculptural Frieze of Parnassus, which depicts 169 individual composers, architects, poets, painters, and sculptors. There are two allegorical sculpture programs: four groups depicting Victorian industrial arts and sciences (agriculture, commerce, engineering and manufacturing), and four more groups representing Europe, Asia, Africa and The Americas at the four corners, each continent-group including several ethnographic figures and a large animal. (A camel for Africa, a buffalo for the Americas, an elephant for Asia and a bull for Europe.)



St. Paul's

St. Paul's Cathedral

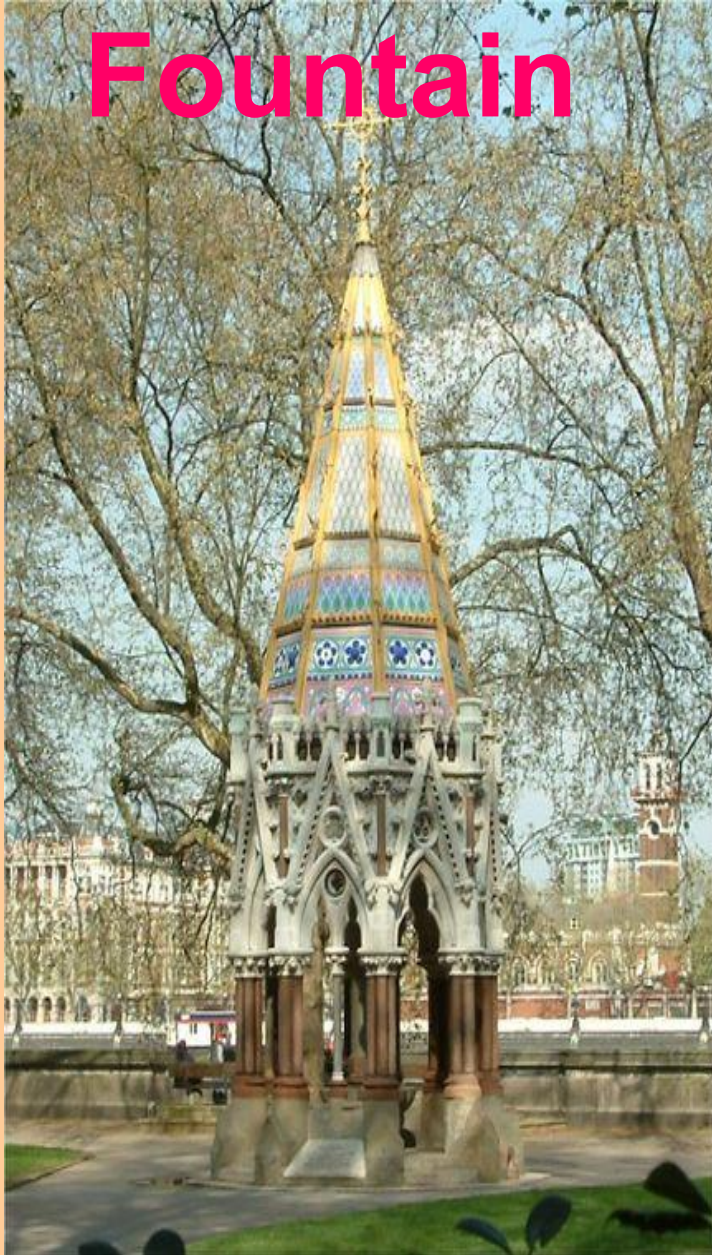




St. Paul's Cathedral is the greatest work of England's greatest architect, Christopher Wren. The Cathedral was begun in 1675. It was opened in 1697 but was finished only in 1710, when Wren was almost eighty years old. There are memorials to many famous men of England in the Cathedral.

The Buxton Memorial

Fountain



The Buxton Memorial Fountain is a memorial in London, the United Kingdom, that commemorates the emancipation of slaves in the British Empire in 1834. It was designed by Gothic architect Samuel Sanders Teulon (1812-1873) in 1865. It was originally constructed in Parliament Square, removed in 1940 and moved to its present position in Victoria Tower Gardens in 1957. There were eight decorative figures of British rulers on it, but four were stolen in 1960 and four in 1971. They were replaced by fiberglass figures in 1980. As of 2005 these are missing, and the fountain is no longer working. In autumn 2006 restoration works were started, and finished in February 2007. The restored fountain was unveiled on 27 March 2007 as part of the commemoration of the 200th anniversary of the act to abolish the slave trade [1]. A memorial plaque commemorating the 150th anniversary of the Anti-Slavery Society was added in 1989.

Hyde Park



Hyde Park is 350 acres (140 hectare/1.4 km²) and Kensington Gardens is 275 acres (110 ha/1.1 km²) giving an overall area of 625 acres (250 ha/2.5 km²), making this park larger than the Principality of Monaco (1.96 square kilometres or 485 acres). The park was the site of The Great Exhibition of 1851, for which the Crystal Palace was designed by Joseph Paxton. The park has become a traditional location for mass demonstrations.



**and one of the
Royal Parks of
London, famous
for its Speakers'
Corner. The park
is divided in two
by the
Serpentine Lake.
The park is
contiguous with
Kensington
Gardens, which
is widely
assumed to be**



The Tower of London





Букингемский дворец

Букингемский дворец





The Tower of London is the most famous of all the historical buildings in London. It stands today almost unchanged since it was built in the 11th century. In the past the Tower of London served both as a palace and as a state prison, but it is a museum today.





The Tower Bridge



Trafalgar Square



Nelson's Column.



In the middle of Trafalgar Square stands Nelson's monument – a tall column with the figure of Nelson at its top. The column is guarded by four bronze lions.

The column was built between 1840 and 1843 to commemorate Admiral Horatio Nelson's death at the Battle of Trafalgar in 1805. The 5.5 m (18 ft) statue of Nelson stands on top of a 46 m (151 ft) granite column. The statue faces south, towards the Palace of Westminster and along Pall Mall, where his ships are represented on the top of each flagpole. The top of the Corinthian column (based on one from the Temple of Mars Ultor in Rome) is decorated with bronze acanthus leaves cast from British cannons. The square pedestal is decorated with four bronze panels, cast from captured French guns, depicting Nelson's four great victories. The monument was designed by architect William Railton in 1838, and built by the firm Peto & Grissell.



Trafalgar Square is in the centre of the West End of London. On the north side there is the National Gallery; in the north-east corner there is National Portrait Gallery, and in the centre there is Nelson's Column with the figure of the great seaman. Trafalgar Square is the place where mass meetings and demonstrations take place.

The British Museum



The British Museum is the largest and richest museum in the world. It consists of the National Library and Museum of History, Archaeology, Art and Ethnography. It was founded in 1753 and contains one of the world's richest collections of antiquities. The Egyptian Galleries contain human and animal mummies. Some parts of Athens' Parthenon are in the Greek section

Upper floors Rooms 36-59, 61-66, 68-73, 90-94

- **Britain and Europe**
- 36, 37 Preliminary
- 41 Sutton Hoo and Early Medieval
- 42 Medieval
- 43 Medieval tiles & pottery
- 44 Clocks & watches
- 45 The Waddesdon Bequest
- 46 Europe: 15th - 16th centuries
- 47 Europe: 16th century
- 48 Europe & America: 20th century
- 49 Western Gallery of Rembrandt (closed 2006)
- 50 Later Bronze Age & Celtic Europe (closed 2006)

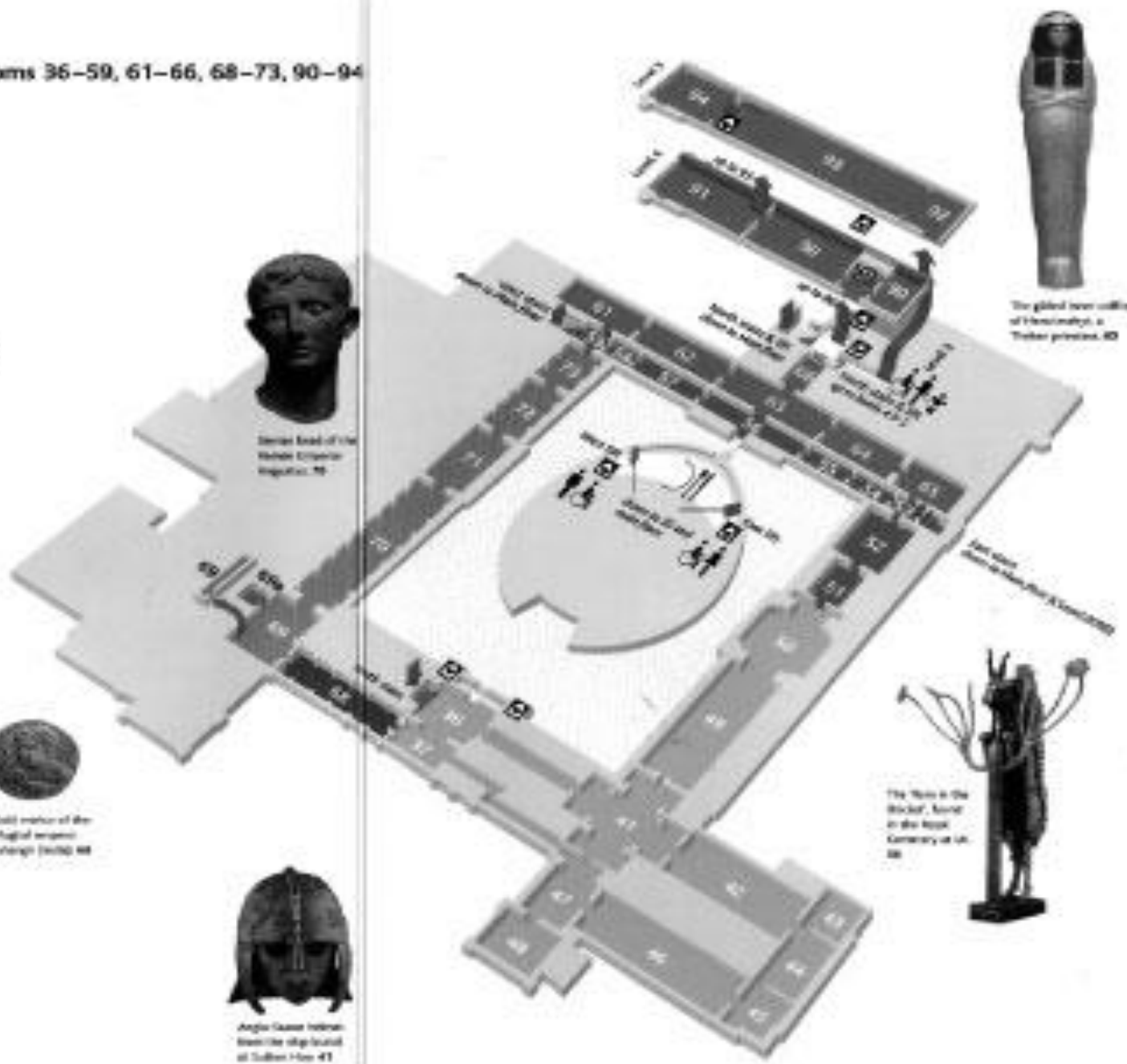
- **Ancient Near East**
- 51 Palmyra/South Arabia (closed 2006)
- 52 Ancient Iran (closed 2006)
The Raymond & Beverly Sackler Galleries: 53-59
- 53-54 Ancient Anatolia
- 55 Later Mesopotamia
- 56 Early Mesopotamia
- 57-58 The Ancient Levant

- **Egypt**
- 61 Ancient Egyptian culture
- 62-63 The Scale-Holder Galleries
Egyptian funerary archaeology
The Raymond & Beverly Sackler Galleries: 64-66
- 64 Early Egypt
- 65 Egypt & Nubia
- 66 Capital Egypt

- **Mesery**
- 68 V&AC Mesery Gallery

- **Greece & Rome**
- 69 Daily life
- 70 The Wallace Gallery
Roman City & Empire
- 71 Italy before the Roman Empire
- 72 The A.C. Leventis Gallery
Ancient Cyprus
- 73 The Greeks in Southern Italy

- **Temporary exhibitions**
- 90a Money & medals
- 90 Prints & drawings (closed 2006)
- 91 Asia (closed 2006)
- 92-94 Japan (closed 2006)



Bronze bust of the Roman Emperor Augustus, 70



The gilded iron scepter of Heracleides, a Thracian prince, 40



Gold necklace of the Pharaoh Amenhotep III (1370-1368 BC)



The 'Wife in the Sticks', found in the Royal Cemetery at Ur, 66



Anglo-Saxon helmet from the ship burial at Sutton Hoo, 41

The British Museum





**Piccadilly Circus is a square
in the**



**Piccadilly Circus is a square
in the**

central part of London

The Monument to the Great Fire of



The Monument to the Great Fire of London, more commonly known as The Monument, is a 61 meter (202 feet) tall stone Roman doric column in the City of London, near to the northern end of London Bridge. . It is located at the junction of Monument Street and Fish Street Hill, 61 meters (202 feet) from where the Great Fire of London started in 1666 The Monument consists of a large fluted Doric column built of Portland stone topped with a gilded urn of fire, and was designed by Christopher Wren and Robert Hooke. Its 61-metre height marks the monument's distance to the site of Thomas Farynor, the king's baker's shop in Pudding Lane, where the fire began. At the time of construction (between 1671 and 1677) it was the tallest freestanding stone column in the world. It is possible to reach the top of the monument by climbing up the narrow winding staircase of 311 steps. A cage (see picture) was added in the mid-19th century at the top of the Monument to prevent people jumping off, after six people had committed suicide between 1788 and 1842. Three sides of the base of the monument carry inscriptions in Latin.

STONEHENGE



Stonehenge is a prehistoric monument, presumably built by Druids, members of an order of priests in ancient Britain.

Tintagel Castle is King Arthur's reputed birthplace. Canterbury Cathedral is the seat of the Archbishop of Canterbury.

Regent's Park



Regent's Park (officially The Regent's Park) is one of the Royal Parks of London. It is in the northern part of central London partly in the City of Westminster and partly in the London Borough of Camden. The park has an outer ring road called the Outer Circle (4.3 km) and an inner ring road called the Inner Circle, which contains the most carefully tended section of the park, Queen Mary's Gardens. The north-east end of the park contains London Zoo. There are several public gardens with flowers and specimen plants, including Queen Mary's Gardens in the Inner Circle, in which the Open Air Theatre is located

The British Education System



Live and

earn...



ENGLISH SCHOOLS

STATE SCHOOLS

PRIMARY SCHOOLS

INFANT SCHOOLS

JUNIOR SCHOOLS

SECONDARY SCHOOLS

**Grammar schools /
Comprehensive schools**

PRIVATE SCHOOLS

**Independent schools /
Preparatory schools**

Oxford University

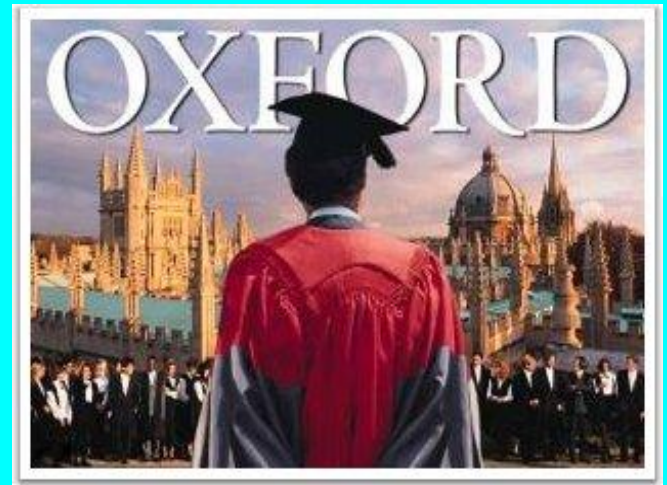




Oxford University is situated in the town of Oxford in England. As a centre of learning it was established in the 12th century. Most of the colleges in Oxford are built of grey stone: they

Oxford University





Cambridge University



Cambridge is one of the most beautiful towns of England. Cambridge is famous for its world-known University, which consists of twenty nine colleges. The oldest of them was

Cambridge University



Cambridge University



CULTURE





LA T C R A
T U R C





*William
Shakespeare
1564-1616*

William Shakespeare was born on April 23, 1564 in Stratford - on - Avon.

One of the best known English playwrights was Shakespeare. He draw ideas for his tragedies and comedies from the history of England and ancient Rome. Many experts consider Shakespeare the greatest writer and the greatest playwright in English language.

William Shakespeare wrote 47 plays which may be divided into: comedies - "A Midsummer Night's Dream"; tragedies - "Hamlet", "Othello", "King Lear", "Macbeth"; and historical plays - "Richard III", "Romeo and Juliet", "Julius Caesar", "Antony and Cleopatra".



*Robert
Burns*

Robert Burns is Scotland's greatest poet.

Robert began to write poems when he was 15 years old. In his poems he described with love and understanding everything and people.

Robert Burns wrote a lot of poems. They are full of the heroes of his mother's stories and the farmers and workmen of the countryside. They are full of life.



Lord George Gordon Byron was born in 1788 in England. His free-spirited life style combined with his rare poetic gift makes him one of the most famous figures of the Romantic Era.

His famous works such as: "Stanzas to Augusta", "The Prisoner of Chillon", "Childe Harold's Pilgrimage", "Manfred" draw readers into the passion, humors and conviction of a poet whose life and work truly embodied the Romantic spirit.

*George
Gordon*



*Charles
Dickens*

Charles Dickens was born in London in 1812.

Charles Dickens is one of the greatest novelists in the English literature. In his books he showed a real world and people of Victorian England.

In 1837 he published his first novel "The Posthumous Papers of the Pickwick Club". Then he published novel after novel – "Oliver Twist", "Dombey and Son", "David Copperfield" and many other good books.



*Charlotte
Brontë*

Charlotte Brontë was born in a small town in England in 1816.

Charlotte received her education at an orphanage (which she described in her novel "Jane Eyre"). After that she worked as a governess and a teacher.

The works of Charlotte Brontë, together with Charles Dickens, William Thackeray and Elisabeth Gaskell are considered belong to the fine school of English realism of the first half of the 19th century. Her first novel "The Professor" was published only after Charlotte's death. The best novel "Jane Eyre" was published in 1847, in 1849 the novel "Shirley" was published. The last novel "Vilette" came out in 1853.

Charlotte Brontë died from tuberculosis in 1855.



*Oscar
Wilde*

1854-1900

Oscar Wilde was born in Dublin on October 16, 1854.

At school, and later at Oxford, Oscar displayed gift for art and humanities. After graduating from the university, Wilde turned his attention to writing, travelling and lecturing.

His most famous works appeared over the next ten years. The most popular are "The Happy Prince and Other Tales", "Windermere's Fan", "An Ideal Husband", "The Importance of Being Earnest".

Wilde also wrote poems, essays, reviews, letters. He died in Paris in 1900.



*Jerome K.
Jerome*

Jerome Klapka Jerome was born in Edinburgh on May 2, 1859 into the family of ruined businessman.

His first literary success was a one-act comedy which was performed in the Globe theatre in London in 1886.

In 1889 a collection of his articles was published. They were published as a book under the title "The Idle Thoughts of an Idle Fellow". This book became very popular in England, and it was published 105 times in 4 years. In 1889 Jerome's best book "Three Men in a Boat" also came out.

Jerome's last book was his autobiography "My Life and Time".

He died in 1927.



*Conan
Doyle*

Arthur Conan Doyle was a great writer. He was born in Scotland into a family of Irish origin. He was a doctor.

Conan Doyle was one of the first to start the fashion of the detective story. Conan Doyle created his famous character, Sherlock Holmes, in 1885. Six years later, when Conan Doyle wrote several stories about this detective, the name of Sherlock Holmes became a name that everybody knew.

Conan Doyle was a famous writer. He became popular because of his live for people. He died in 1930.



MUSIC

and

MUSICIANS



ROCK MUSIC

The Beatles



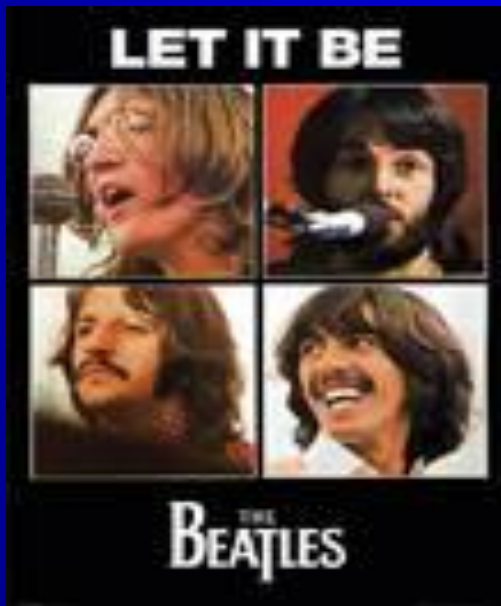
The Beatles is one of Britain's most influential pop groups, first performing in 1959 in Liverpool. The group included: Paul McCartney, John Lennon, George Harrison and Ringo Starr. At first, the group performed music that was influenced by American rock'n'roll.



The Beatles

John, Paul, George and Ringo were amazing and talented boys who made a unique contribution to music and it made a revolution in pop history. The boys composed songs for the youth. The songs seemed more musical and more exciting than others'.

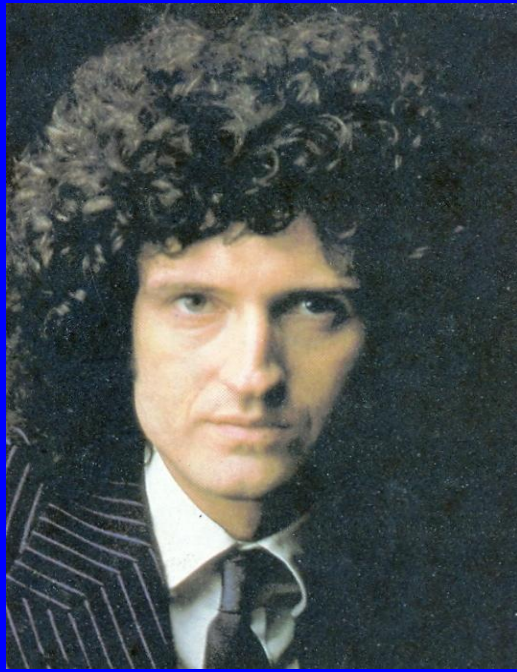
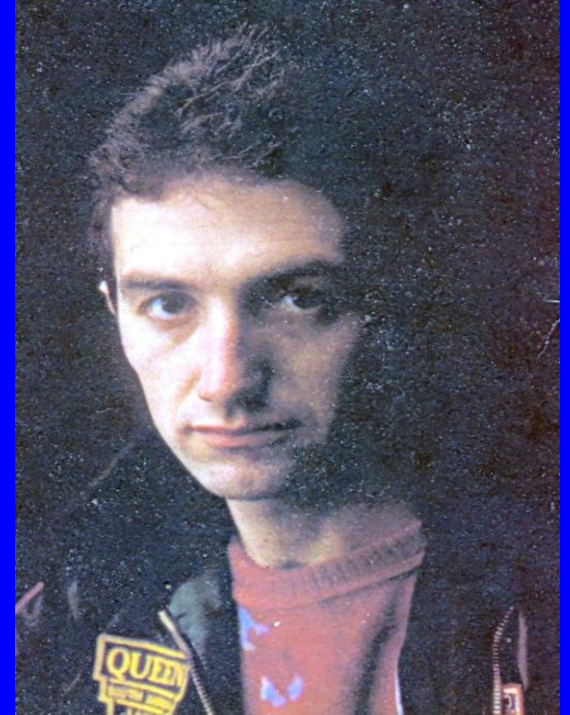
Their songs and unusual sense of humour drew the people's attention. Many more people began listening to pop music.



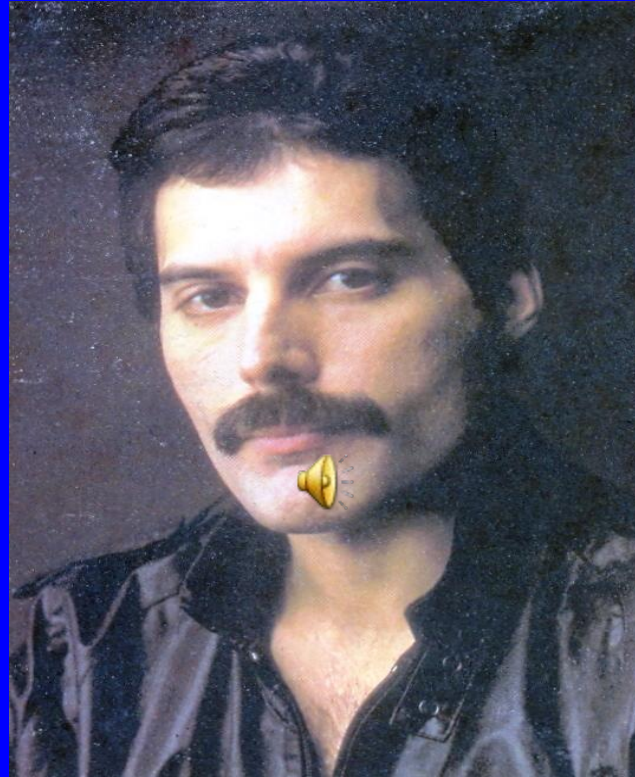


Elton John

John Diakon

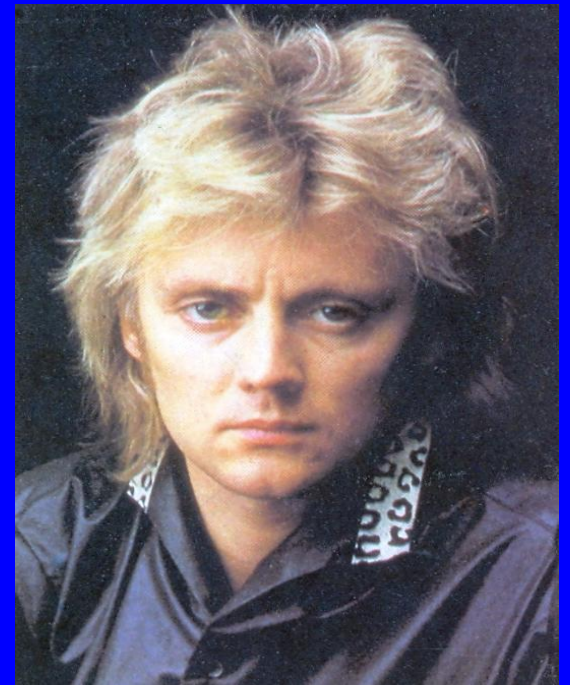


Brian May



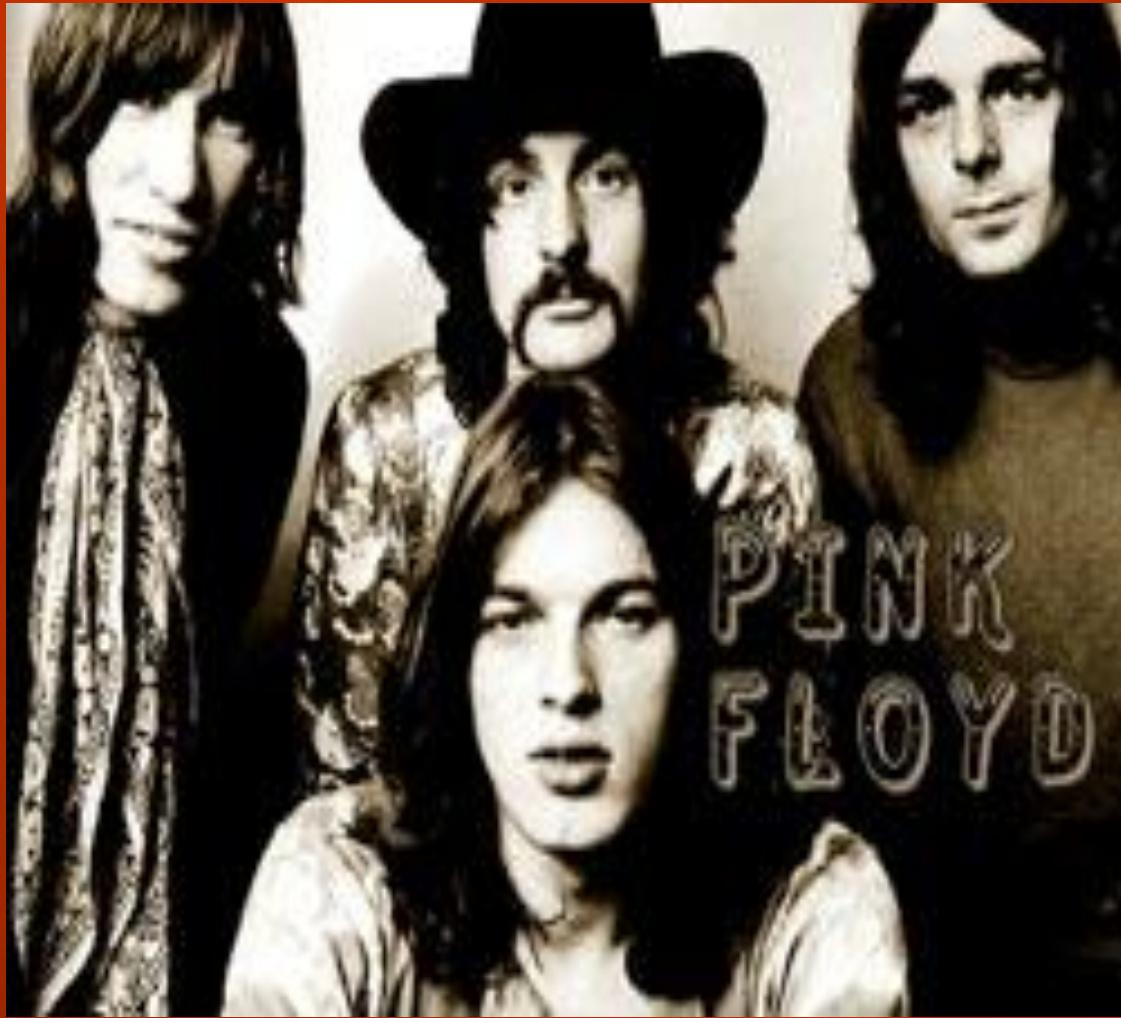
Freddie Mercury

QUEEN Roger Taylor



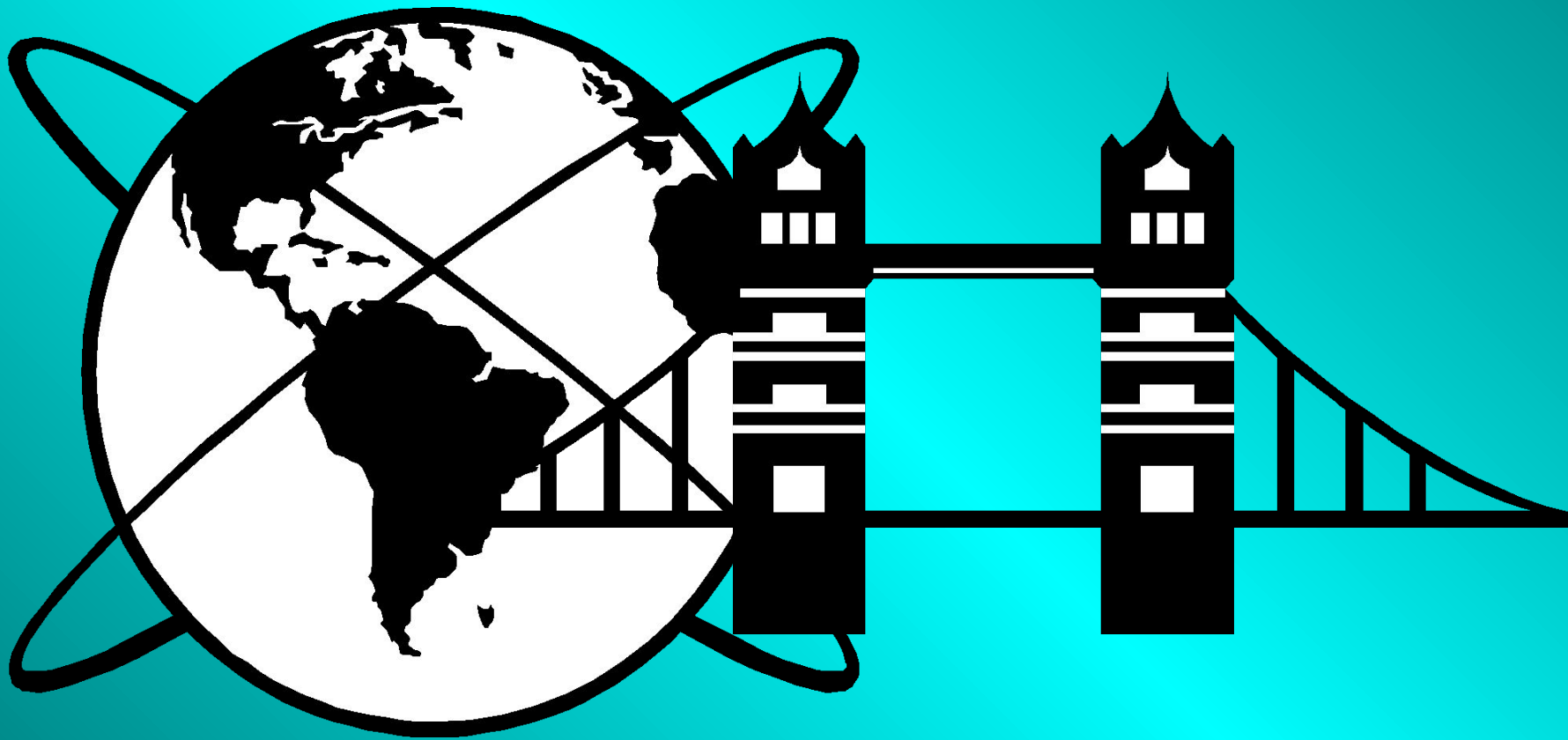
QUEEN





Pink Floyd

Britain's Ecological Activity



Ecological Problems



Nature is under threat!

**One country's pollution
can be**

**every country's
problem.**



Environmental
protection
is of a universal
concern!



Sport in Britain



FOOTBALL



Football is the most popular game in the United Kingdom. England, Wales, Scotland and Northern Ireland have their own Football Leagues and national teams. Games are played on Saturday afternoons from August to April. In addition to the FL games there is a competition called the Football Association Cup. The Cup Final is

Football



Golf



Golf is the Scottish national game. It originated in the XV century and the most famous golf course in the world, known as the Royal and Ancient Club, is at St. Andrew's

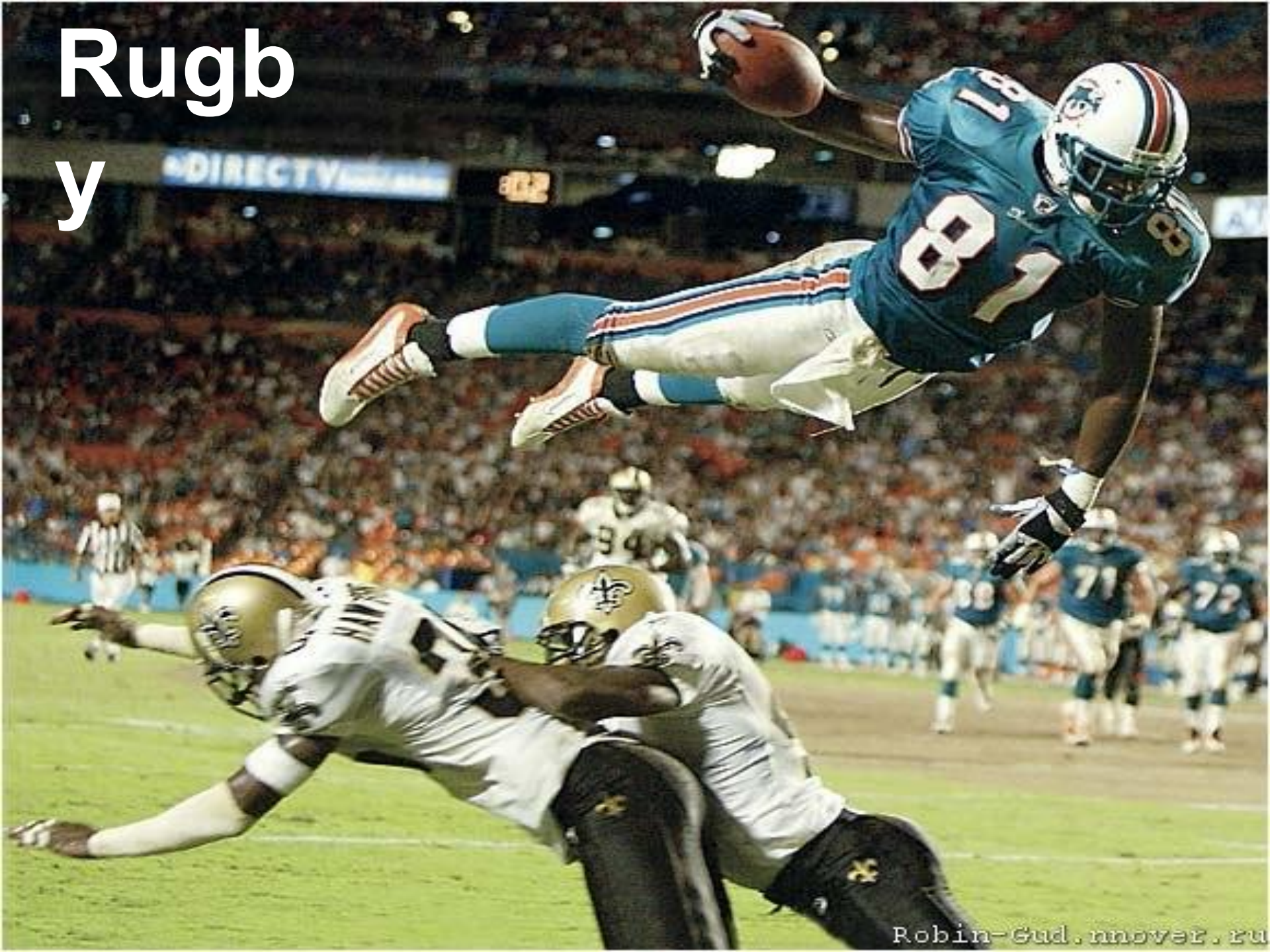


Robin-Gud, moveit.ru

Rugby

Rugby is popular British sport which is played in other countries. It is also called rugby football. The story is told that in 1823 boys at Rugby school in England were playing football in the normal way, when suddenly one boy picked the ball up and ran with it.

Rugb y





Rugb

Cricket







Dr. J.



marlboro

SIEMENS

AT

The End