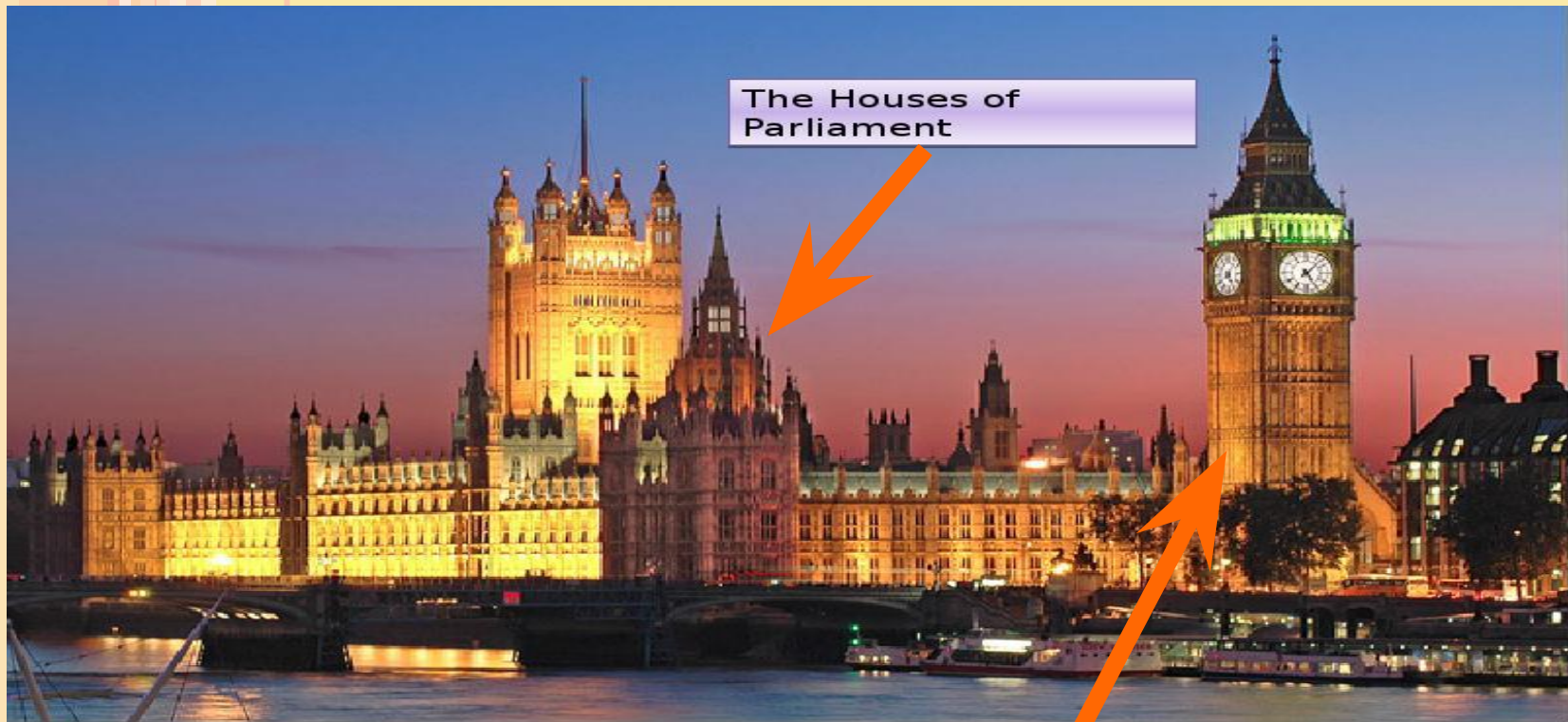


LANDMARKS

Top Tourist Attractions



Every year, millions of
tourists come to London to
see and listen to Big Ben.
But what exactly is Big
Ben?



The Houses of
Parliament

Most people think that Big Ben is the tall clock tower that stands above the Houses of Parliament.

Big Ben

- The man in charge of the building was Sir Benjamin Hall. This man was very tall, and the workers and friends called him Big Ben. So they called the bell Big Ben too.



Its name comes from the bell's commissioner of works, Sir Benjamin Hall, or Ben.



**The tower is
98 meters
high.**

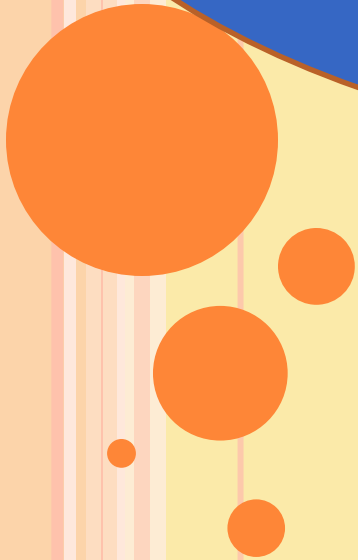


**The bell
inside the
tower is
13,7 tons**



The clock on the tower is also huge. Each of the four clock faces is 7 meters wide. The hour hands are about 3 meters long and the minute hands are about 4 meters long.

- 1. Big Ben is in London.**
- 2. Big Ben is the name of a bell.**
- 3. The tower is 98 meters.**
- 4. Each hour hand is about 3 meters long.**



**Tick-tock,
Tick-tock,
This is Big Ben.
Big Ben is a clock.
Day and night
With all its might
Big Ben, the clock,
Says: Tick-tock.**

