

Англия и её достопримечательности



ЛОНДОН

The capital of Great Britain

Description London is the capital of England and the United Kingdom. The history of this modern city dates back to the time of the Romans. In the very center of London is the Parliament Building - the Palace of Westminster, as well as the famous Big Ben Clock Tower and Westminster Abbey. This church is the site of the coronation of British monarchs. On the opposite bank of the Thames there is the London Eye ferris wheel, which offers a panoramic view not only of the south coast, but of the whole city.

Достопримечательности

14 top tourist attractions in England

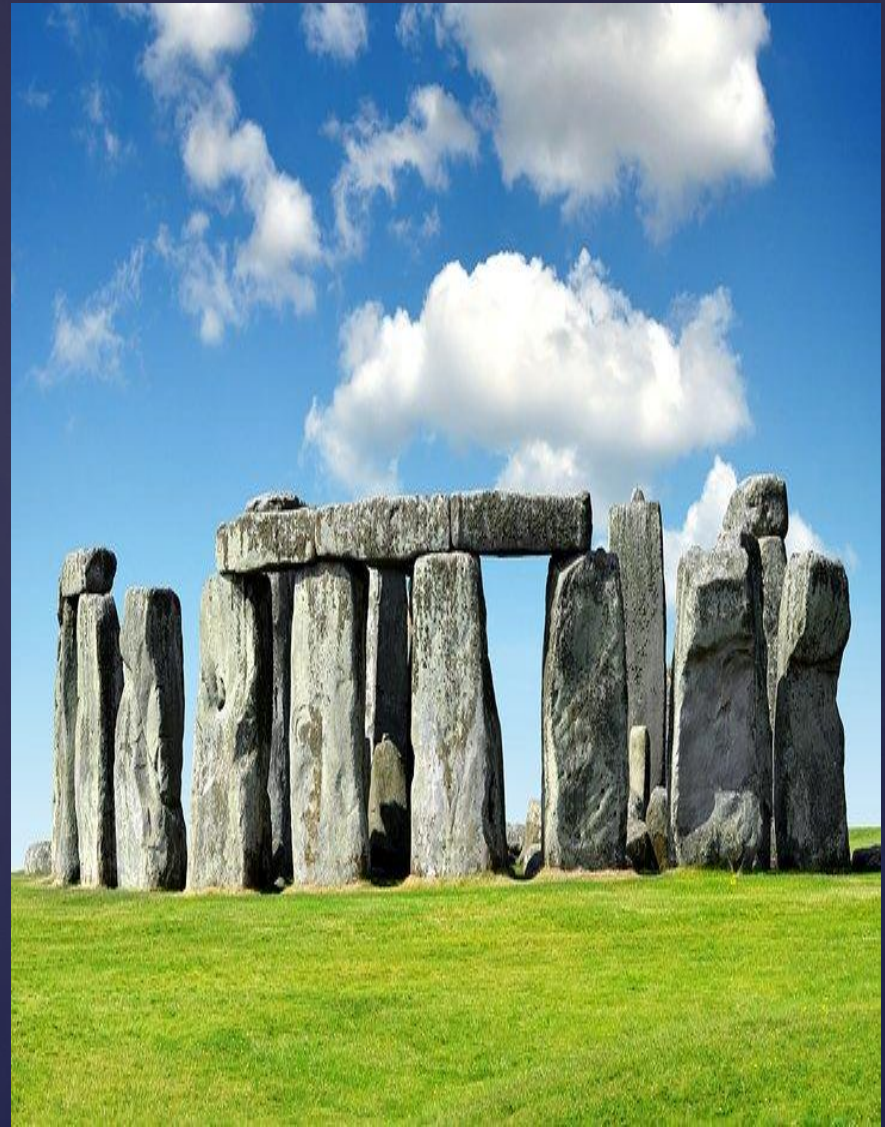
Posted by Brian Dirsley

One of the most visited countries in the world, England offers almost endless opportunities to see and do things. This small but influential country, part of the beautiful British Isles, offers a fascinating history, breathtaking cities and rich cultural traditions. Historical places are at every step, from prehistoric megaliths and ancient Roman sites of centuries - ancient castles and urban centers, starting from the Middle Ages.

England is also easy to reach, as its most popular tourist destinations are well connected by trains and buses. Or you can drive between the sights on a well-planned motorway system. If you decide to travel around the country by car or public transport, you are guaranteed an unforgettable experience.

СТОУНХЕНДЖ

Stonehenge, located 10 miles north of Salisbury on the Salisbury Plain, is the most famous prehistoric monument in Europe (the site is so popular that visitors need to pre-purchase a ticket on time to guarantee entry). The exhibitions in the excellent visitor center paved the way for visitors, explaining with their audiovisual experiences and more than 250 ancient objects how megaliths were erected, and telling about the life when they were placed here, between 3000 and 1500 BC. After walking on huge stones, visit authentic copies of Neolithic houses to see the tools and instruments of everyday Neolithic life, as volunteers demonstrate skills 4,500 years ago. Although you cannot enter the circle to wander among the stones during normal business hours, you can reserve special early morning or late evening access to the circle through the English Heritage, which operates the site.



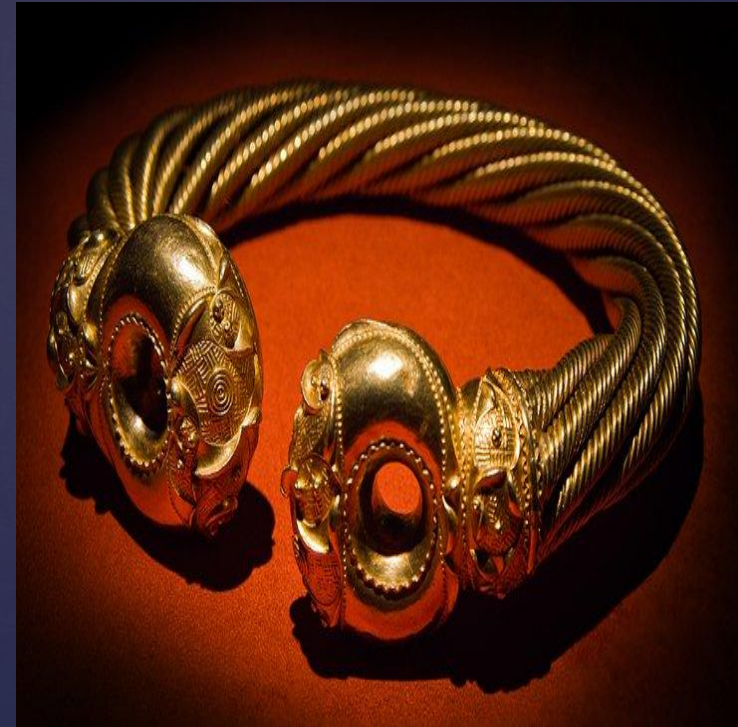
Лондонский Тауэр

- Prison, palace, treasury, observatory and menagerie - Tower of London did all this. Widely considered the most important building in England, this World Heritage Site is enough to see and do to keep visitors busy for hours. The central element is the White Tower. Built in 1078 by William the Conqueror, it is home to amazing exhibits such as the Line of Kings, the world's oldest visitor attraction (1652) with its remarkable exhibits of royal armor. Other attractions include the remarkable Crown Jewels exhibition, classic Yeoman Warder Tours, the Royal Mint, and exhibitions and exhibits dedicated to prisoners and executions. All in all, the Tower of London covers an area of about 18 acres, so there is something to explore.



Британский музей

- With collections of antiquities that are some of the best in the world, the British Museum owns more than 13 million artifacts from Assyria, Babylon, Egypt, Greece, the Roman Empire, China and Europe. The most famous ancient artifacts are Elgin's marble from the Parthenon in Athens and Rosetta Stone, but here you can see many other outstanding exhibits. The ancient Egyptian collection is the largest outside of Cairo, and the fourth-century Roman silver treasure, known as the Mildenhall Treasure, discovered in Suffolk in 1942, is nothing short of impressive.



Биг-Бен

- The clock tower of the Palace of Westminster in London is known worldwide under the name Big Ben. Meetings of the House of Lords and the House of Commons are held in the Palace of Westminster, in the many kilometers long corridors of the palace it is easy to lose the direction you need, there are hardly any people who have visited all its 1,200 rooms, but the most famous part of the palace - the clock tower - is known, without exaggeration, to say to everyone the world and is one of the most striking architectural symbols of the city.



Тауэрский мост

- The most popular symbol of London - Tower Bridge - was opened in 1894. He is both adjustable and hanging. The design of the bridge is such that when the lower central span is bred for the passage of ships, the upper gallery, which is led by stairs in both towers, remains open to pedestrians who wish to cross the Thames. However, today the gallery is more often used as an observation deck; a museum is also equipped in it.