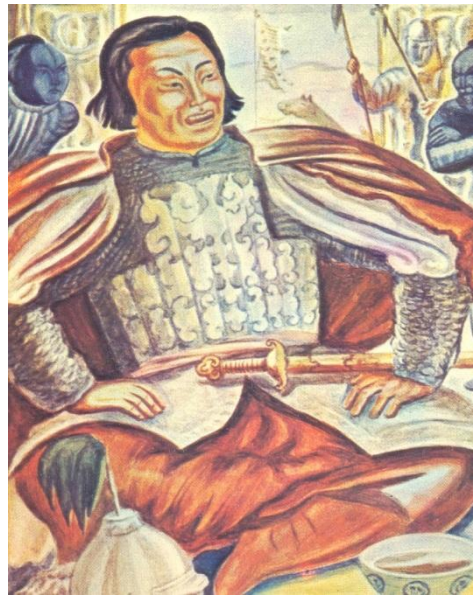


Early to bed, early to rise, makes a man healthy, wealthy and wise.





My working day.





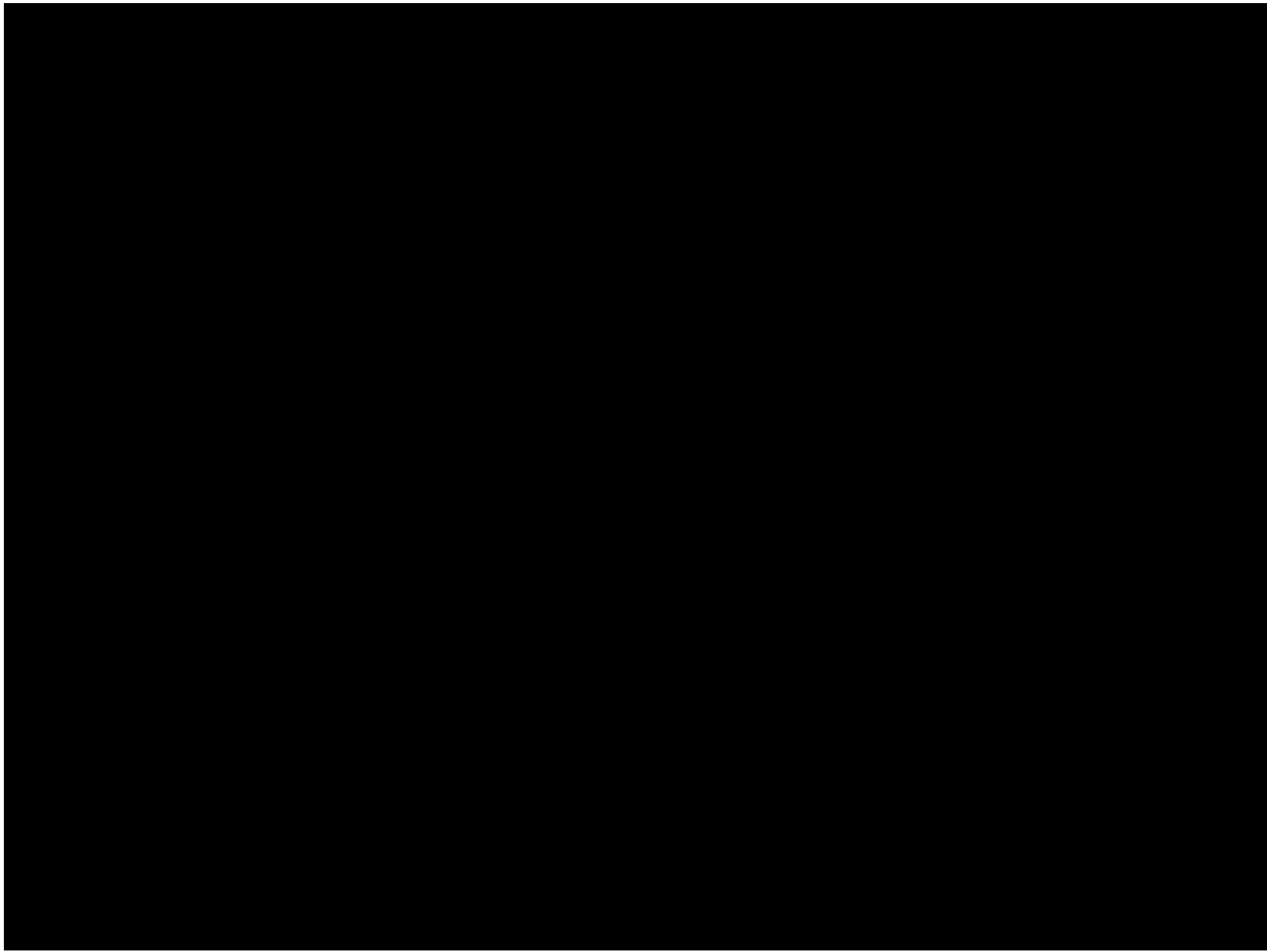
- **play sport games**

ride the horse

go jogging

have breakfast





Present Simple (affirmative/negative & interrogative) – Настоящее простое время (утвердительная/отрицательная и вопросительная формы)

I/You /We./They work.
He/She/It works.

ОТРИЦАТЕЛЬНАЯ ФОРМА

I/You/We/They don't work.

He/She/It doesn't work.

ВОПРОСИТ. ФОРМА

КРАТКИЕ ОТВЕТЫ

Do I/you/we/they work?

Yes, I/you/we/they do.

No, I/you/we/they don't.

Does he/she/it work?

Yes, he/she/it does.

No, he/she/it doesn't.

The keys.

- 1. I get up in the morning.
- 2. I do not play computer games every day.
- 3. We do the shopping on Sundays.
- 4. Do you play tennis?
- 5. Does Sanal go jogging in the morning?
- **Check yourself:**
- **0-1 mistake- «5»**
- **2 mistakes – «4»**
- **3 mistakes – «3»**











