

What's this?



This is an art gallery  
(=art museum)

What's this?



This is a picture  
(=painting)

What is the **profession** of this man?



This is an **artist**.

=This is a painter.

# What's this?





It's a still life picture

Это - натюрморт

# What's this?



This is a landscape.

Это – пейзаж.

What's this?



This is a portrait.

Это - портрет

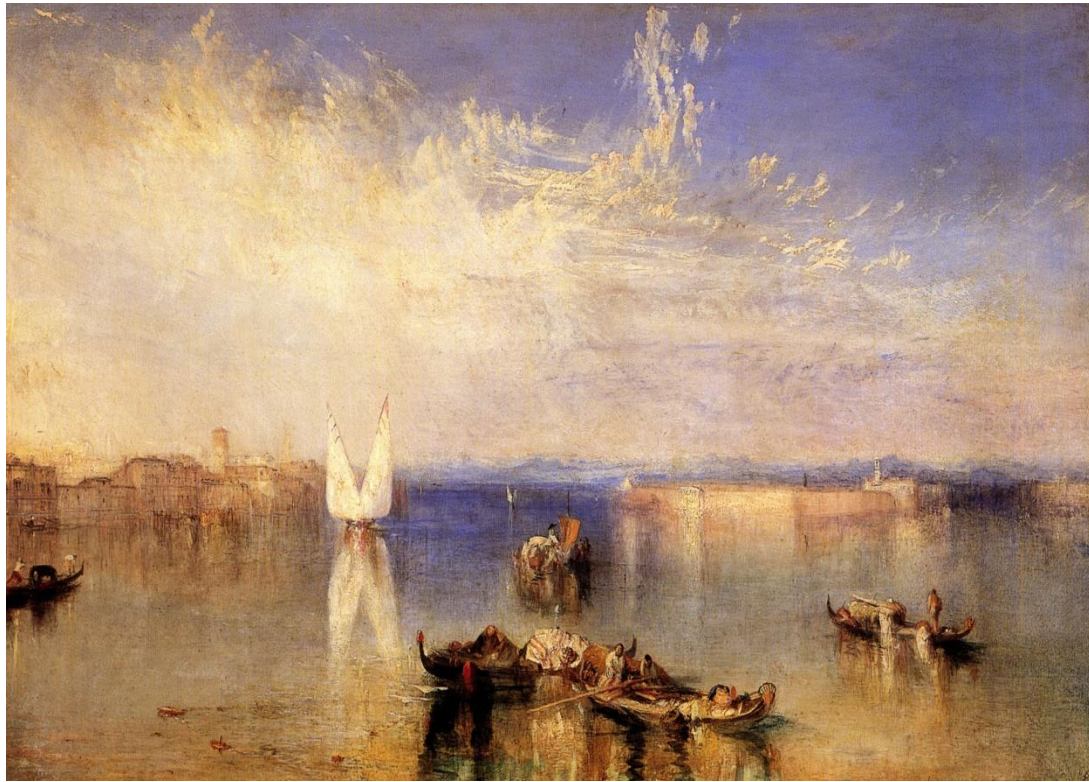
# **Famous English Artists**

# Joseph Mallord William Turner



- Born on 23 April 1775  
(Covent Garden, London, England)
- Died on 19 December 1851 (aged 76)  
(Cheyne Walk, Chelsea, England)
- Nationality English
- Education Royal Academy of Arts
- Known for paintings
- Movement Romanticism

# “The Yaht Approaching the coast” by W. Turner





# “The Sea” by W. Turner



# “Light and colour” by W. Turner



# William Hogarth



- Born on 10 November 1697  
(London, England)
- Died on 26 October 1764 (aged 66)  
(London, England)
- Known for Painter, engraver,  
satirist

# The Series “Marriage a la mode” by W. Hogarth

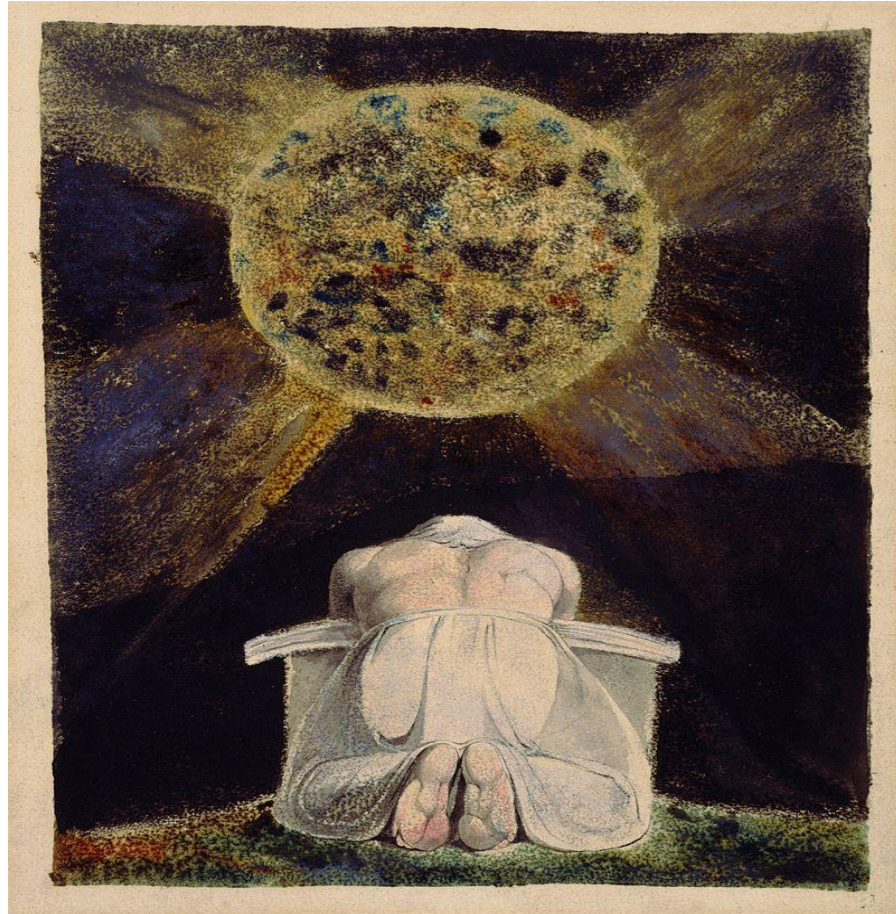


# William Blake



- Born on 28 November 1757  
(Soho, London, Great Britain)
- Died on 12 August 1827 (aged 69)  
(Charing Cross, London, England)
- Occupation: Poet, painter, printmaker
- Genre: Visionary, poetry
- Romanticism

# “The song of Los” and “Dante Hell V”



# Active or Passive

- To paint
- To draw
- To reflect
- To express
- To transform
- To illustrate
- To ... paint..
- To ... dr...
- To ... reflect..
- To ... Express..
- To ... transform..
- To ... illustrate..

# Active or **Passive**

- To paint
  - To draw
  - To reflect
  - To express
  - To transform
  - To illustrate
  - To show
- To **BE** paint**ED**
  - To **BE** draw**n**
  - To **BE** reflect**ED**
  - To **BE** express**ED**
  - To **BE** transform**ED**
  - To **BE** illustrate**d**
  - To **BE** show**n**



# Task 2. Self-control

- expressing feelings
- painting
- techniques
- images on canvas
- sketch-books
- oil paintings
- water-colours
- marriage a la mode
- light and colour effects

- Выражая чувства
- Живопись, картина
- Техники
- Образы на холстах
- наброски, зарисовки
- Картины маслом
- Акварели
- Модный брак
- Игра (передача) свето-тени

## Task 3. Self-control.

- A **landscape artist shows nature**: fields, forests, seas, etc...
- A **still life picture illustrates some fruit**, vegetables or flowers in vases or something of this kind.
- An **impressionist mainly uses light and colour** effects than concrete forms and structures
- A **masterpiece is a painting highly praised** by critics all over the world.