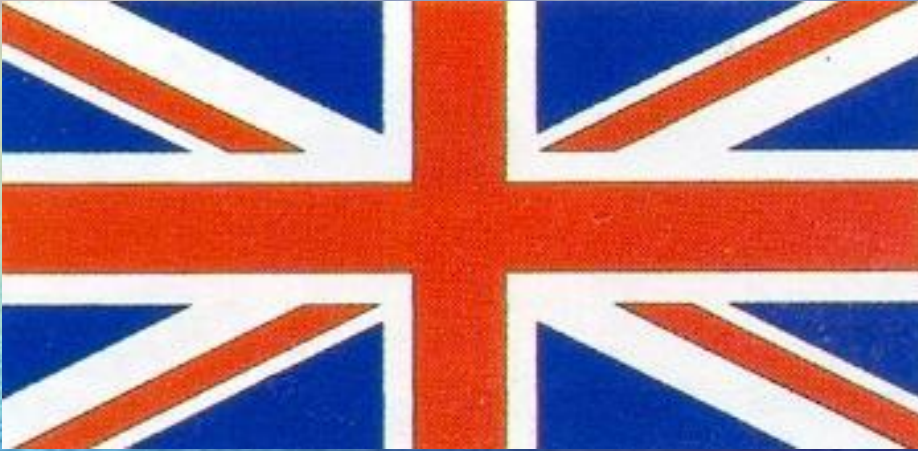


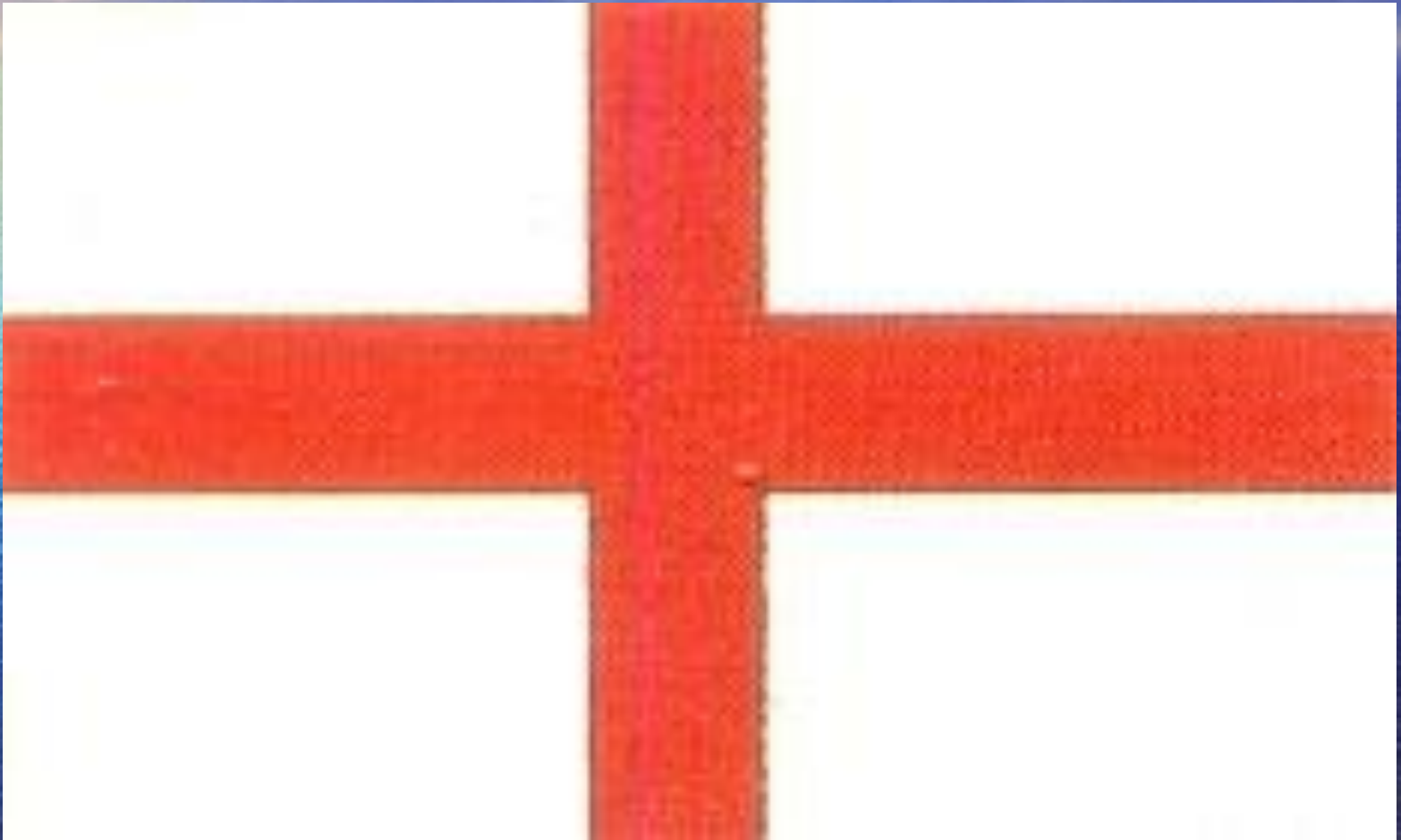
# The United Kingdom of Great Britain and Northern Ireland



The Flag of the UK consists of three flags.



# The Flag of England



# The Flag of Scotland



# The Flag of Ireland

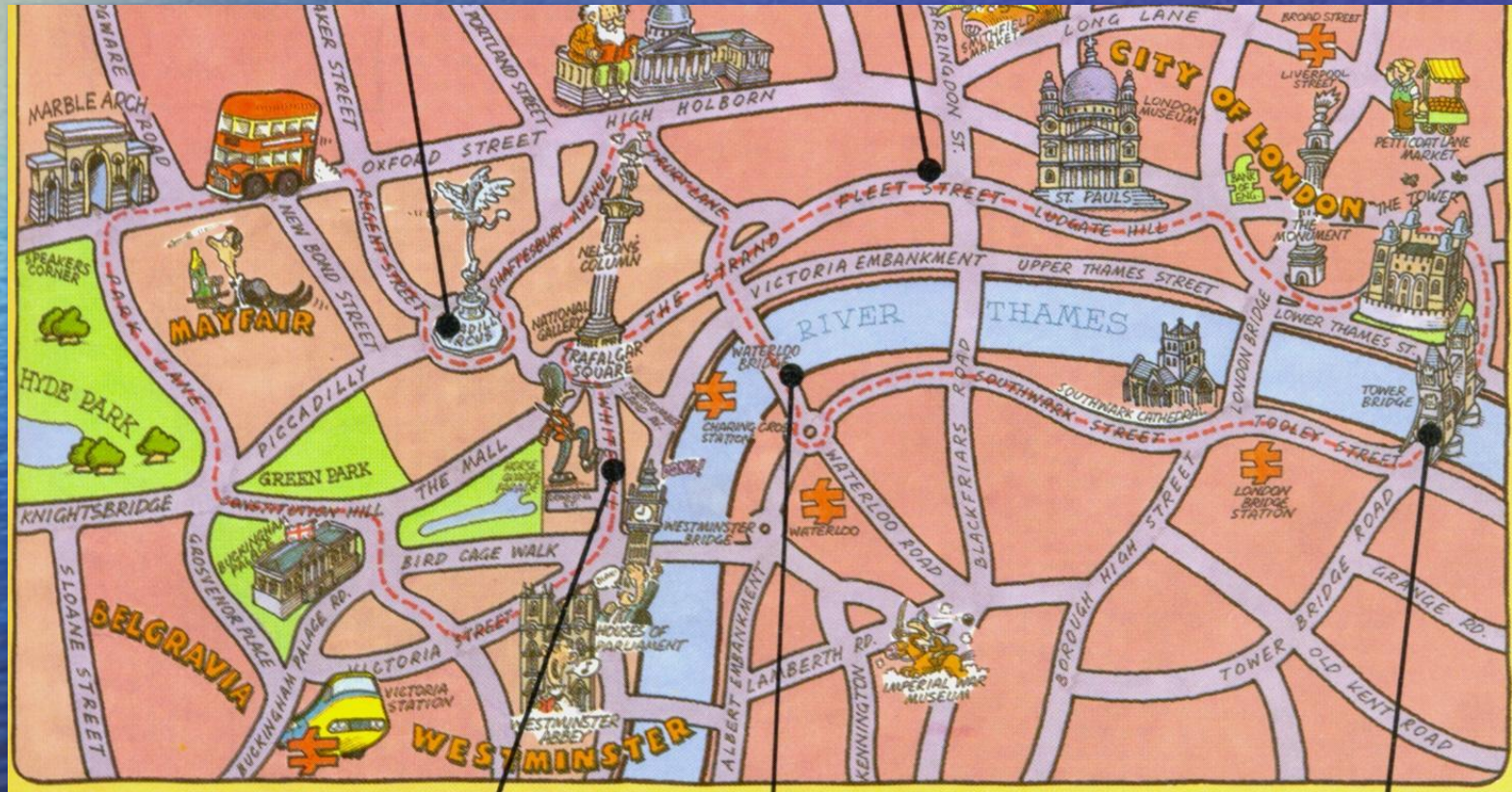


# The Flag of Wales



# London

London is the capital of the United Kingdom of Great Britain and Northern Ireland. It was founded by the Romans before the year 400.



The name of the town was Londinium.

# The River Thames

London stands on the banks of the River Thames.

There are 27 bridges over the Thames, 8 tunnels under the river.





# The Tower of London

The Tower of London was a fortress, a palace, a prison and the King`s Zoo. Now it is the museum.



# The Tower Bridge



# The London Underground

- London is 46km from N. to S. and 58km from E. to W.
- So Londoners often use the Metro



About **7** million people live in London



# The City of London

- London is in fact three cities: the City of London, the West End and the East End.
- The City is the financial and business centre

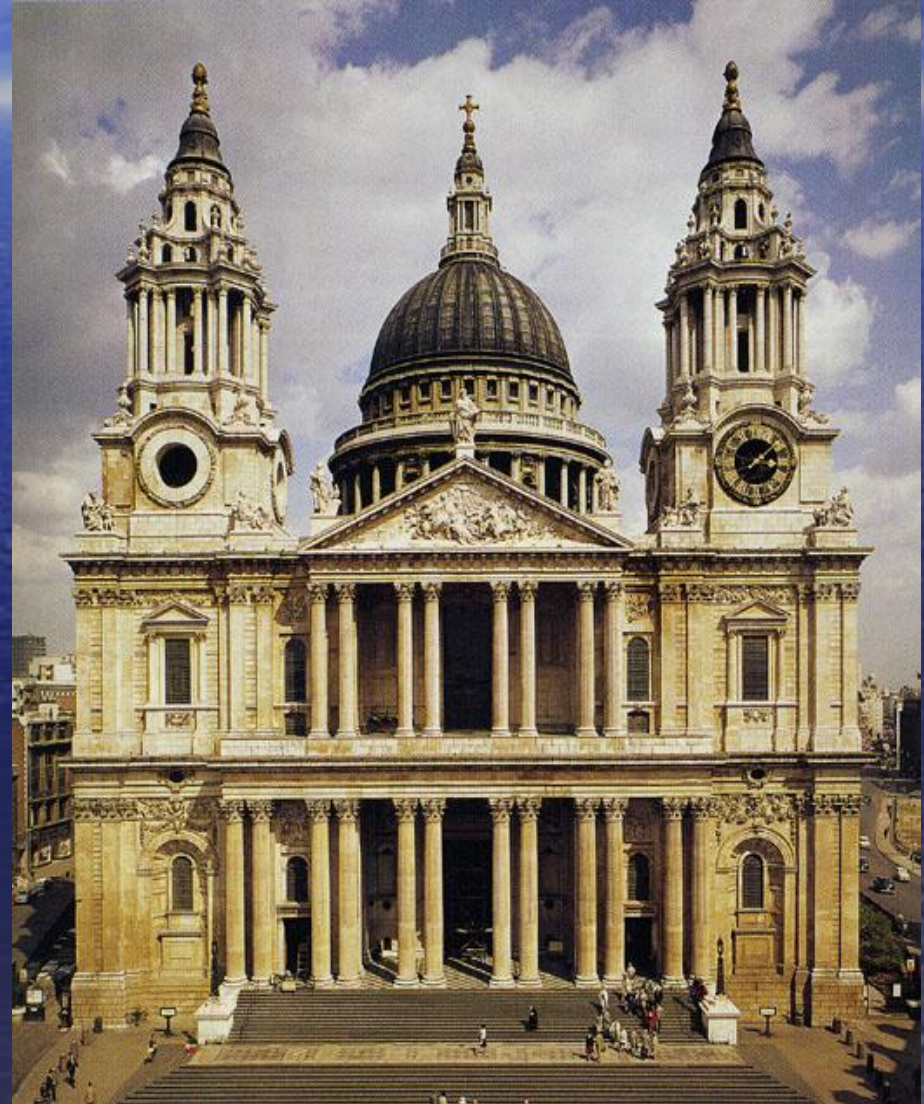




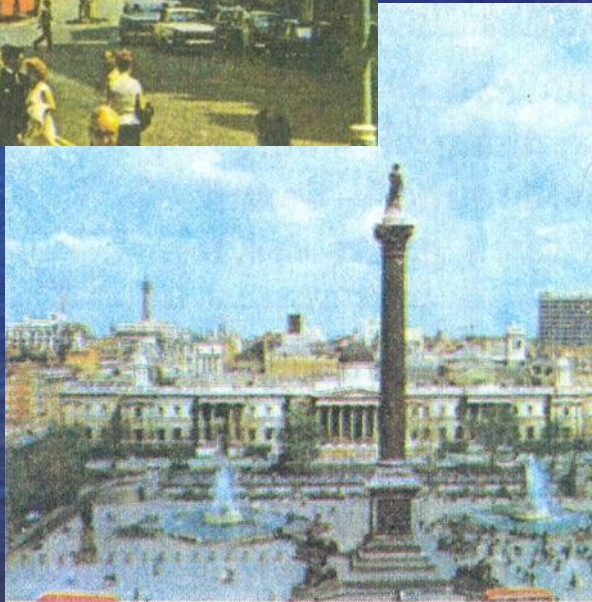
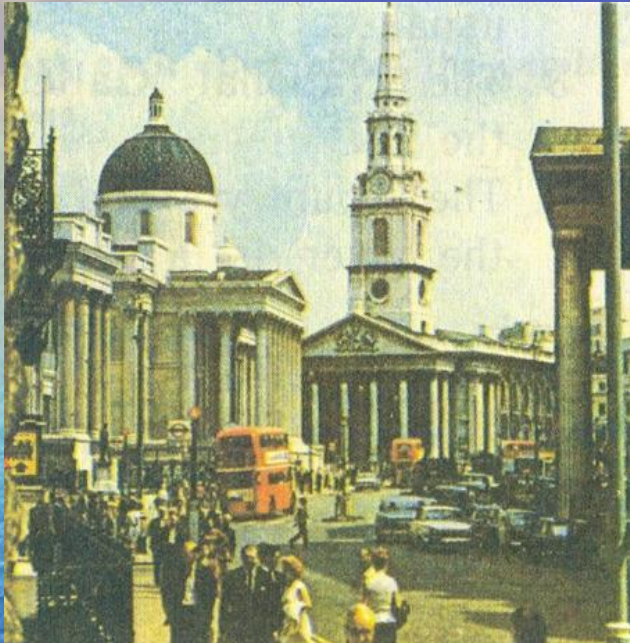
CITY OF LONDON

# St. Paul`s Cathedral

- St. Paul`s Cathedral is not far from the Tower of London. The famous English architect Sir Christopher Wren built it in the 17<sup>th</sup> century.



# Trafalgar Square



- The centre of London is Trafalgar Square.
- In the middle of the square there is a tall column.
- It is a monument to Admiral Nelson



A photograph of Trafalgar Square in London. In the background, the tall, white, neoclassical spire of St Martin-in-the-Fields church rises against a clear blue sky. The church's portico with its columns is visible below the spire. In the foreground, the large, multi-tiered fountains of the square are in full operation, with water cascading down the tiers. To the left of the main fountain, a green bronze sculpture of a reclining figure is also spraying water. The overall scene is bright and clear.

# Trafalgar Square

The Portrait Gallery

# The National Gallery



- The National Gallery is one of the best picture galleries of the world. It is in Trafalgar Square

# The West End

- The West End – the centre of London with many historical palaces, parks, museums, theatres stores and hotels.





# The West End

- The UK is a parliamentary monarchy.
- Changing the guards in front of the Queen's palace
- The Crown of the Queen.



# Buckingham Palace

- The Queen of England lives here.
- In front of Buckingham Palace you can see the Queen Victoria Memorial.



Buckingham Palace

# Queen of the UK



- Elizabeth II





# Westminster Abbey

- It is the Royal church.
- It is more than nine hundred years old.

# Westminster Abbey

- Many English kings and queens and great writers are buried there.





# The Houses of Parliament



- Big Ben is the clock, the tower and the bell

# 10, Downing Street



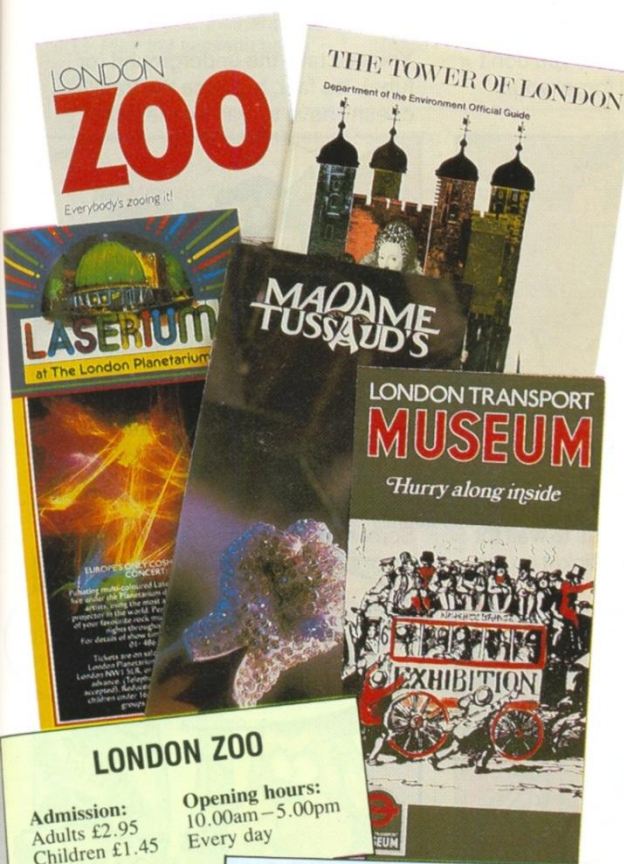
Prime Minister works and lives here.

# Piccadilly Circus

- It is one of the busiest squares in the West End



# Museums of London



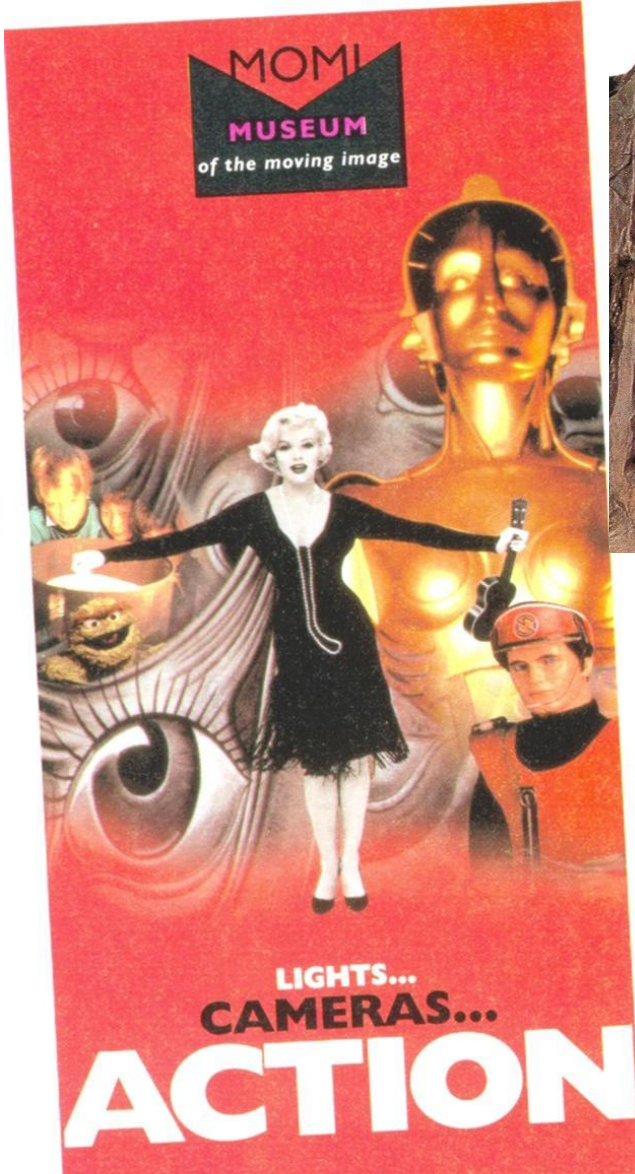
**LONDON ZOO**  
Admission:  
Adults £2.95  
Children £1.45  
Opening hours:  
10.00am - 5.00pm  
Every day

**HM TOWER OF LONDON**  
The Tower opens at 9.30am on weekdays and at 2.00pm on Sundays. It closes at 5.45pm every day.  
ADMISSION  
Adults £4.00 Children £1.50

**MADAME TUSSAUD'S**  
BAKER STREET · LONDON  
Open every day except Christmas Day  
10am - 5.30pm  
Adults £3.70 Children £2.10

**PLANETARIUM**  
Open 10.00 - 17.30  
all year round  
Adults £2.10 Children £1.30

**LONDON TRANSPORT MUSEUM**  
Covent Garden  
ADMISSION FREE  
Open 10.00 to 18.00 every day





# The British Museum

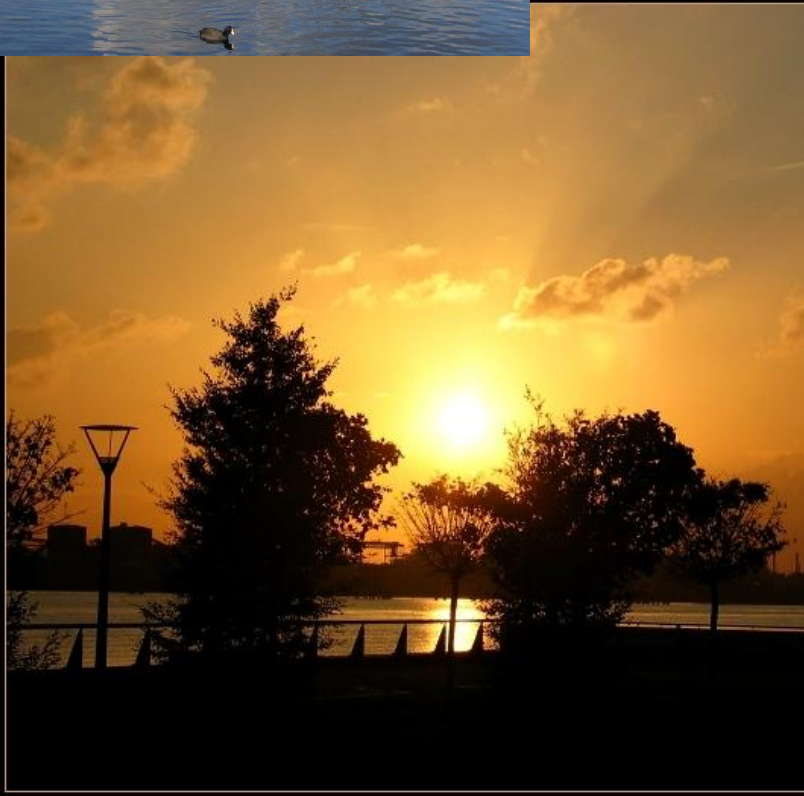


# Parks of London

## Regent Park



# Hyde Park



# Green Park







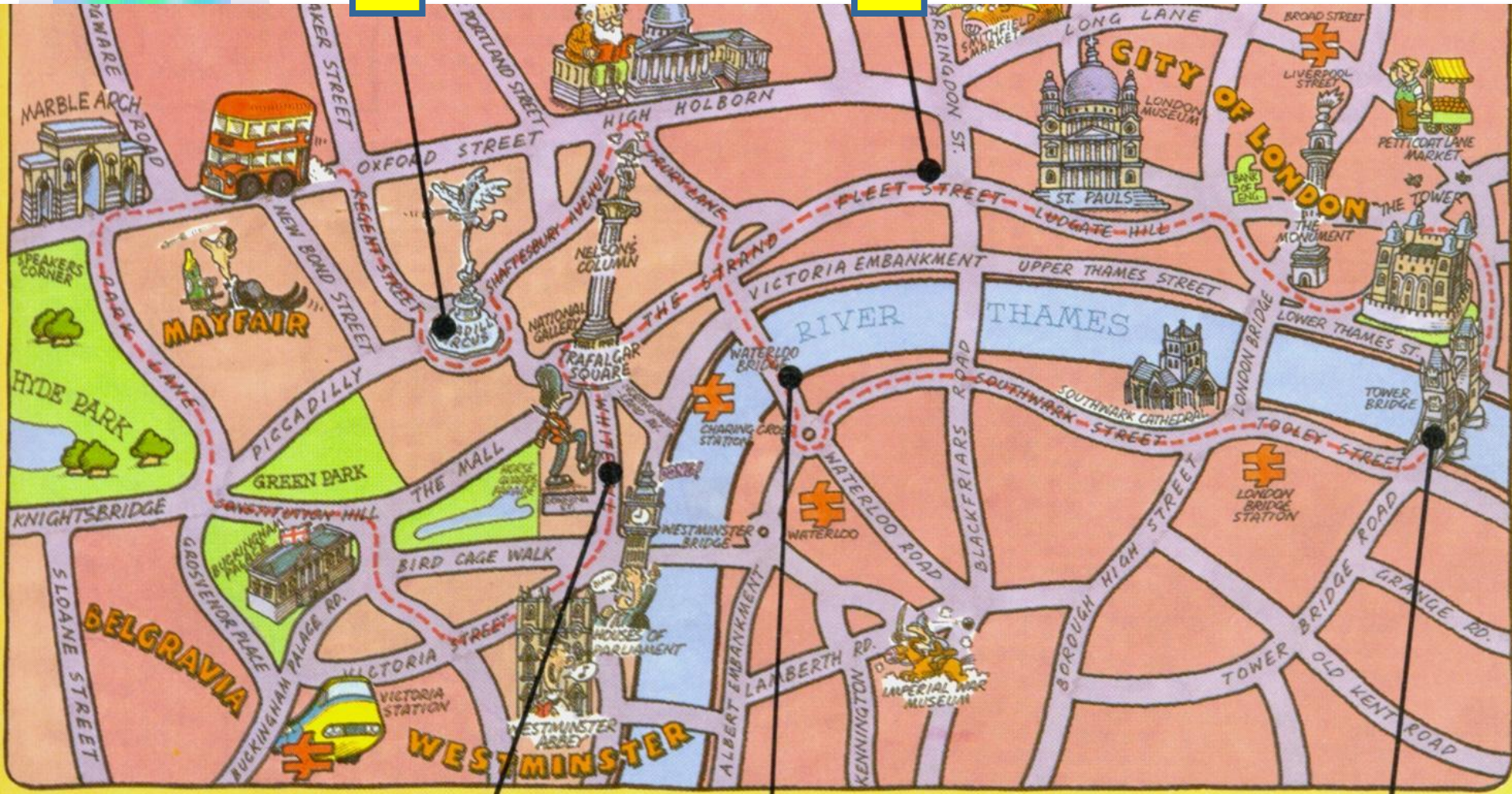
Sondres

The Tower Bridge

# A SIGHTSEEING TOUR

1

3



2

5

4



Sondres

The Tower Bridge

What's this ?



What's this ?



What's this ?



What's this ?



What's this ?





# What's this ?



# What's this ?



# Match

1. Buckingham
2. Westminster
3. The Houses of
4. Hyde
5. The Tower of
6. Big
7. Trafalgar
8. The National

- a. Park
- b. Gallery
- c. Palace
- d. London
- e. Square
- f. Ben
- g. Abbey
- h. Parliament

# Complete

- **The Tower of London was a fortress, a prison and the King's Zoo. Now it is a ...**
- **... ... is the clock, the tower and the bell**
- **There are ... bridges over the Thames and ... tunnels under the river.**
- **... ... works and lives here. 10, Downing Street**



# Complete

- **London is ... .. of the United Kingdom of Great Britain and Northern Ireland.**
- **... .. is the financial and business centre.**
- **... .. is one of the best picture galleries of the world.**
- **About ... .. people live in London.**



# **Answer the questions**

- **What is London?**
- **Where does London stand?**
- **How many bridges are there over the Thames?**
- **What is the Tower of London?**
- **What church is not far from the Tower of London?**
- **Who built St. Paul's Cathedral?**
- **What three cities are there in London?**



# **Answer the questions**

- **What Square is in the centre of London?**
- **What museums do you know?**
- **How many people live in London?**
- **Where does the British Parliament work?**
- **What is the Queen`s name?**
- **Where does she live and work?**
- **What is Westminster Abbey famous for?**