

DISCOVER WALES





Wales

Wales is the country that is a part of the UK. It lies in the west of Great Britain. It is bordered by England to its east, the Irish Sea to its north and west, and the Bristol Channel to its south.

The landscape is beautiful.

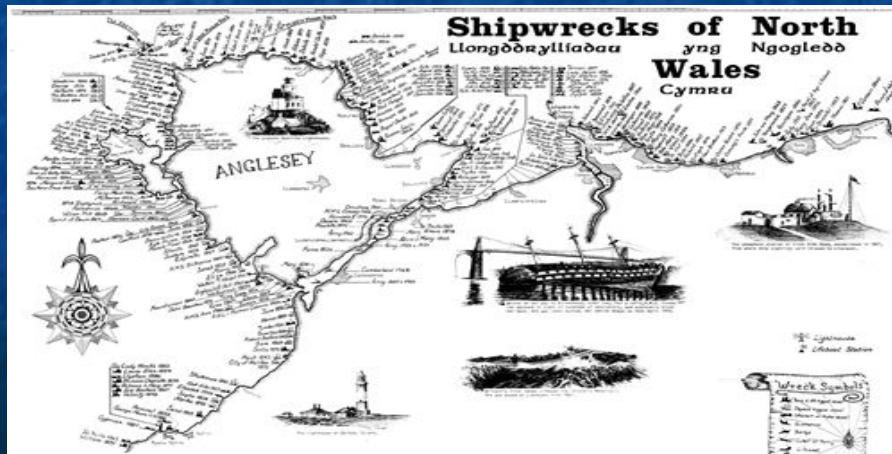
Many English people move to Wales when they retire.

WALES



THE LAND OF LEGENDS

It is the country which has the longest continuous coastal path in the world (1,400km). Every cove and clifftop comes with legends of pirates and smugglers, shipwrecks and saints, lost villages and sand-swamped castles. Off the coast, 50 islands teem with birds, while the clear waters are home to seals and the UK's largest pod of bottlenose dolphins.



National Symbols



The Welsh flag



The Leek



The Daffodil



**The Prince of
Wales Feathers**



The harp

The flag of Wales



It's everywhere you look in Wales.

The red dragon has been a symbol of Wales for 2,000 years.

It was granted official status in 1959.

Some say it's the oldest national flag still in use, and that it was used by King Arthur and other ancient Celtic leaders.

THE LEEK SAVED WALES

A Celtic monk named David advised the Welsh army to distinguish themselves from their Saxon enemies by wearing a leek in their helmets.

The army won the battle and David the monk became St David, or Dewi Sant as he is known in Wales.



The Prince of Wales's feathers



It is the heraldic badge of the Prince of Wales. It consists of three white ostrich feathers emerging from a small gold crown. The words on the ribbon below mean "I serve".
The badge is sometimes used to symbolize Wales.

THE WELSH HARP

It is regarded as the national instrument of Wales. By the end of the 18th century, the triple harp - so called because it had three rows of strings - was widely known as the Welsh harp on account of its popularity in Wales.

The harp has been used through the ages as an accompaniment to folk-singing and dancing and as a solo instrument.



Welsh language



Welsh is an ancient Celtic language, similar to Breton, spoken in Brittany, France. In the 60's Welsh was given equal status with English as an official language and is used in the law courts. It is taught in school and some TV program are broadcast in Welsh. However, only about 20% of the population speaks Welsh.

TRADITIONAL COSTUMES

The traditional Welsh costume is a costume once worn by rural women in Wales





Rugby

Rugby is the national game of Wales.

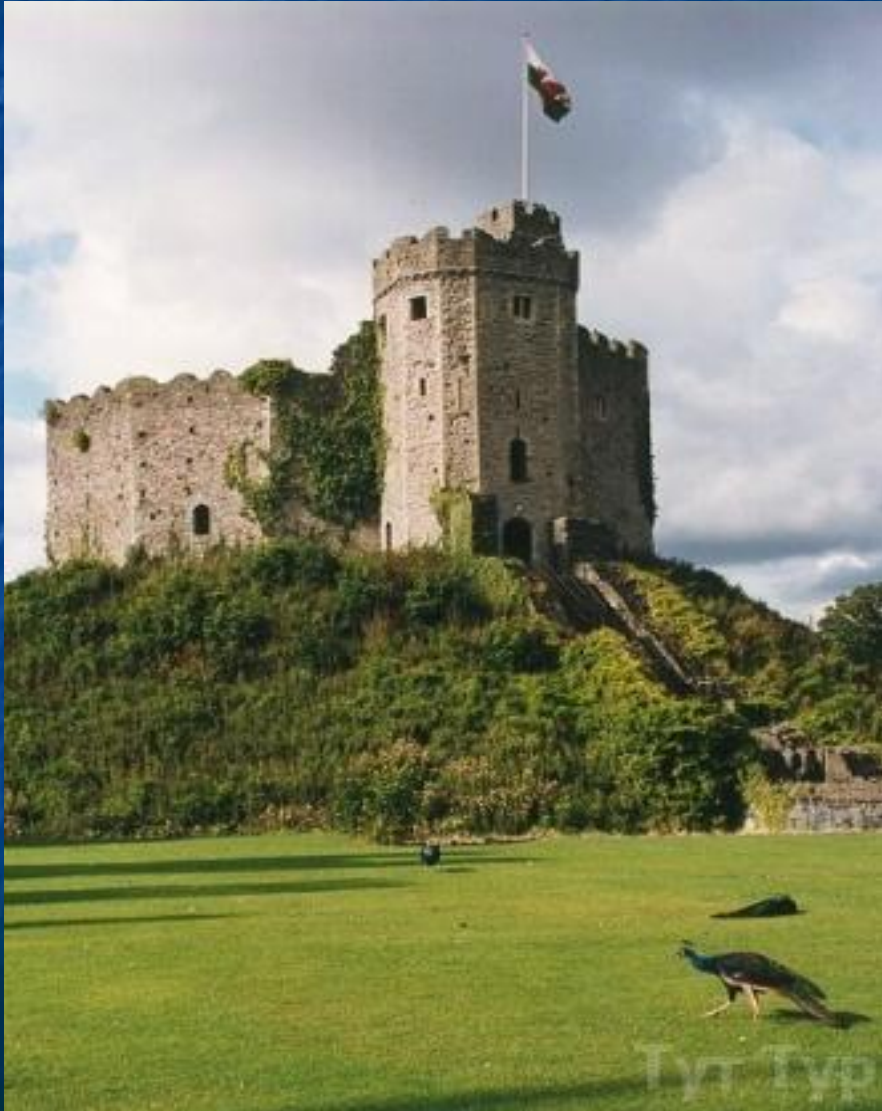
The rules of the game are quite difficult. A team consists of fifteen players. The game is played with an egg-shaped ball.



CARDIFF, THE CAPITAL



Cardiff



Cardiff, a large city in the south, was chosen as the capital of Wales in 1955, mainly because of its size. Since 1536, Wales has been governed by England and the heir to the throne of England has the title of Prince of Wales, but Welsh people have strong sense of identity.



National Assembly of Wales



COUNTRY OF MANY CASTLES



There are more castles per square mile in Wales than anywhere else on Earth. They come in all shapes, sizes, and states of repair. Some have been lived in continuously for a thousand years, others are ruins in remote forests. Here is a selection of them, each with its own rich history and legends.



Caernarfon

Edward I began work on Caernarfon Castle in the 1280s, and it was designed to impress visitors with huge towers and colour-coded bands of stone. It's a part of a UNESCO World Heritage





Harlech



Harlech Castle is a medieval fortification, constructed on the top of the rock close to the Irish Sea. It was built by Edward I during his invasion of Wales between 1282 and 1289.

Caerphilly Castle



This is the biggest castle in Wales. You can see mighty towers (with a greater lean than Pisa), a Great Hall and drawbridge, siege engines that actually work, all surrounded by elaborate water defence.

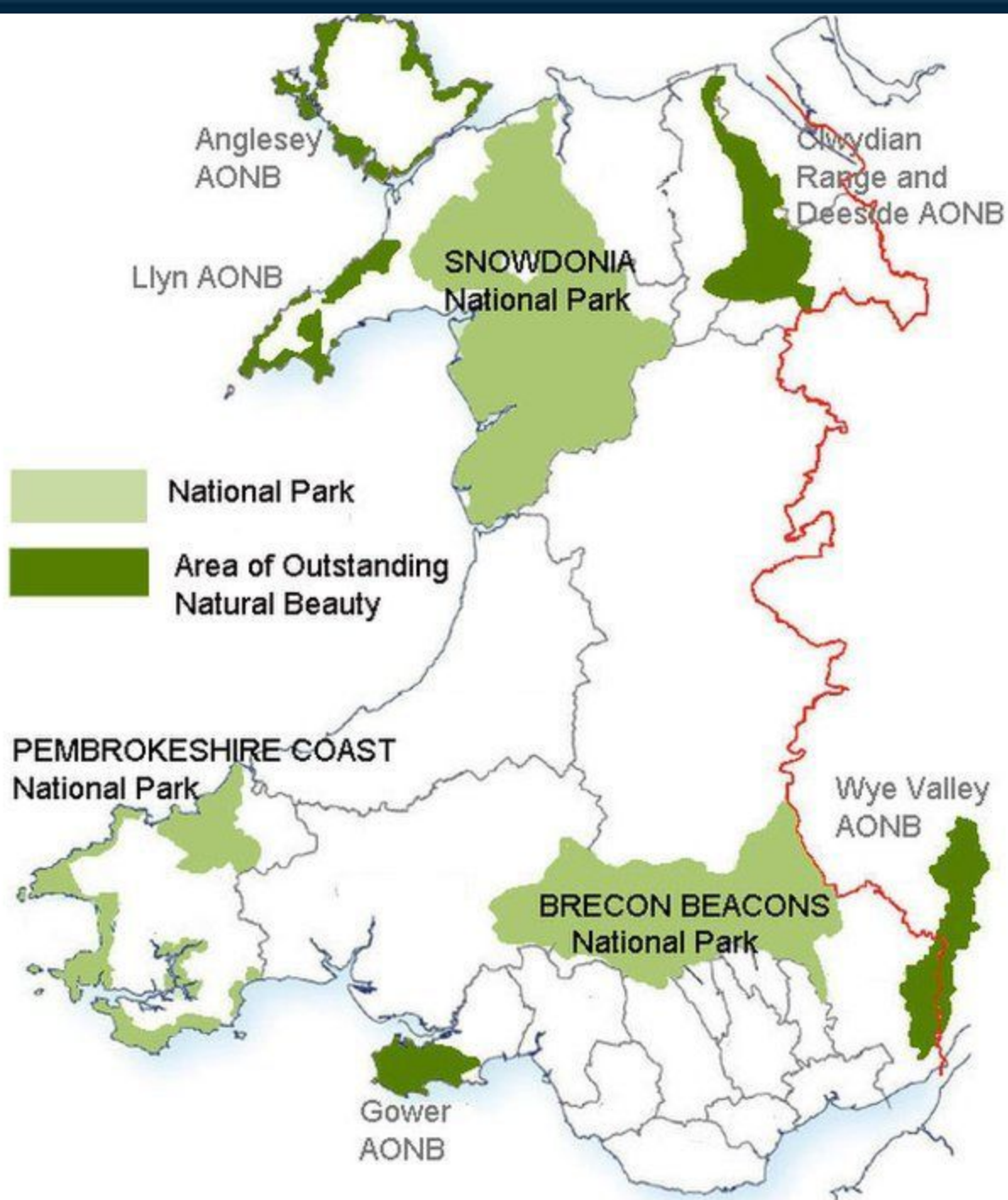




NATIONAL PARKS OF WALES

Wales is big on wide-open spaces. A fifth of the country is National Park land. There're five areas of outstanding natural beauty, and great expanses of forest and woodland. There are two major mountain ranges – Snowdonia and the Brecon Beacons





SNOWDONIA NP



Snowdonia National Park

is the largest National Park in Wales. Home to the tallest mountain in Wales, coastline, beaches and Wetlands. The park is also home to over 100 lakes.



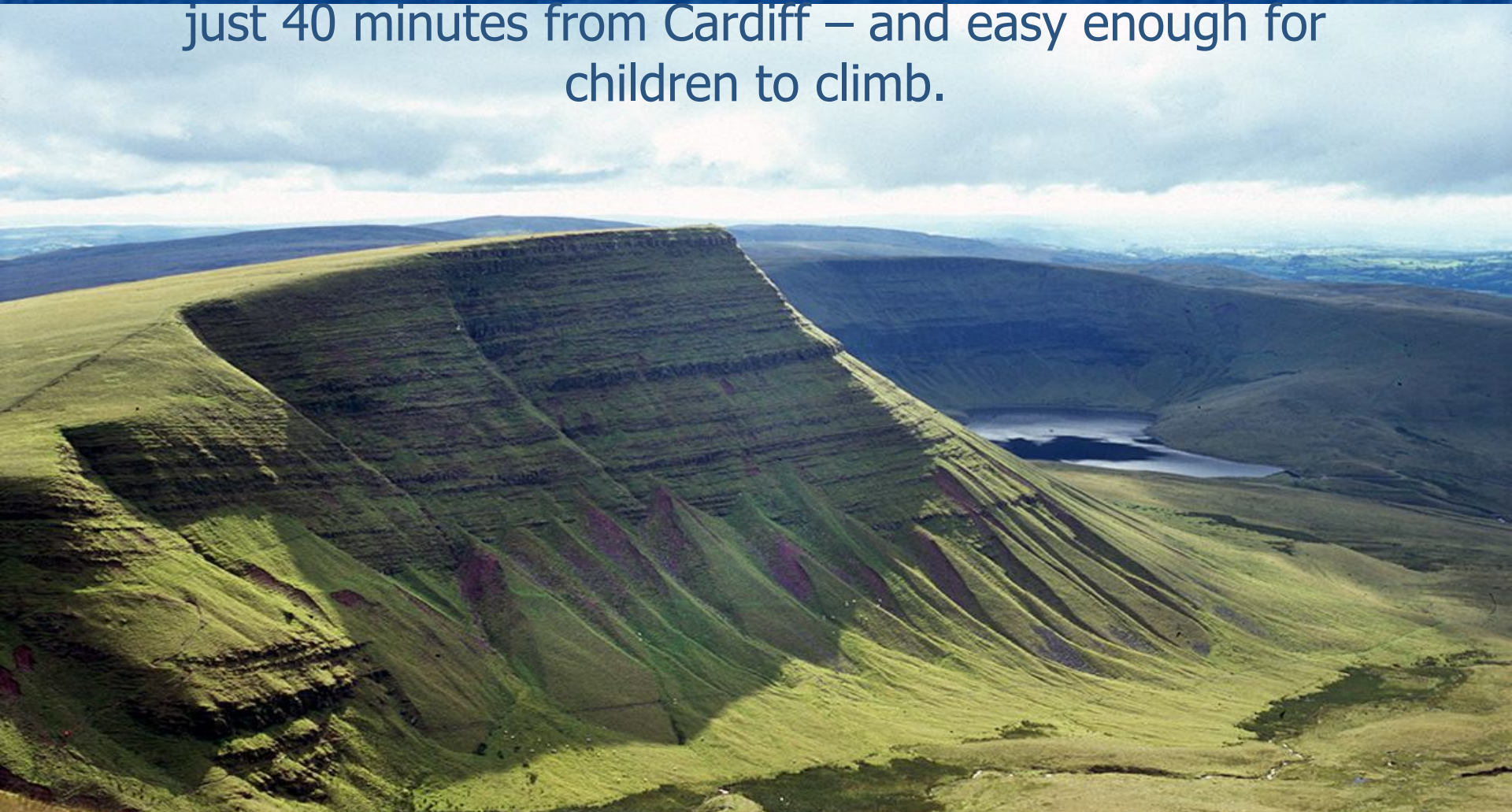




10544. - DOLGELLEY, TORRENT WALK I.

BRECON BEACONS NP

Pen y Fan is the highest point in the Brecon Beacons, which this year celebrates its 60th birthday as a National Park. The beauty of Pen y Fan is that it's easy to get to – just 40 minutes from Cardiff – and easy enough for children to climb.





Newport





Swansea



Traditional Welsh houses





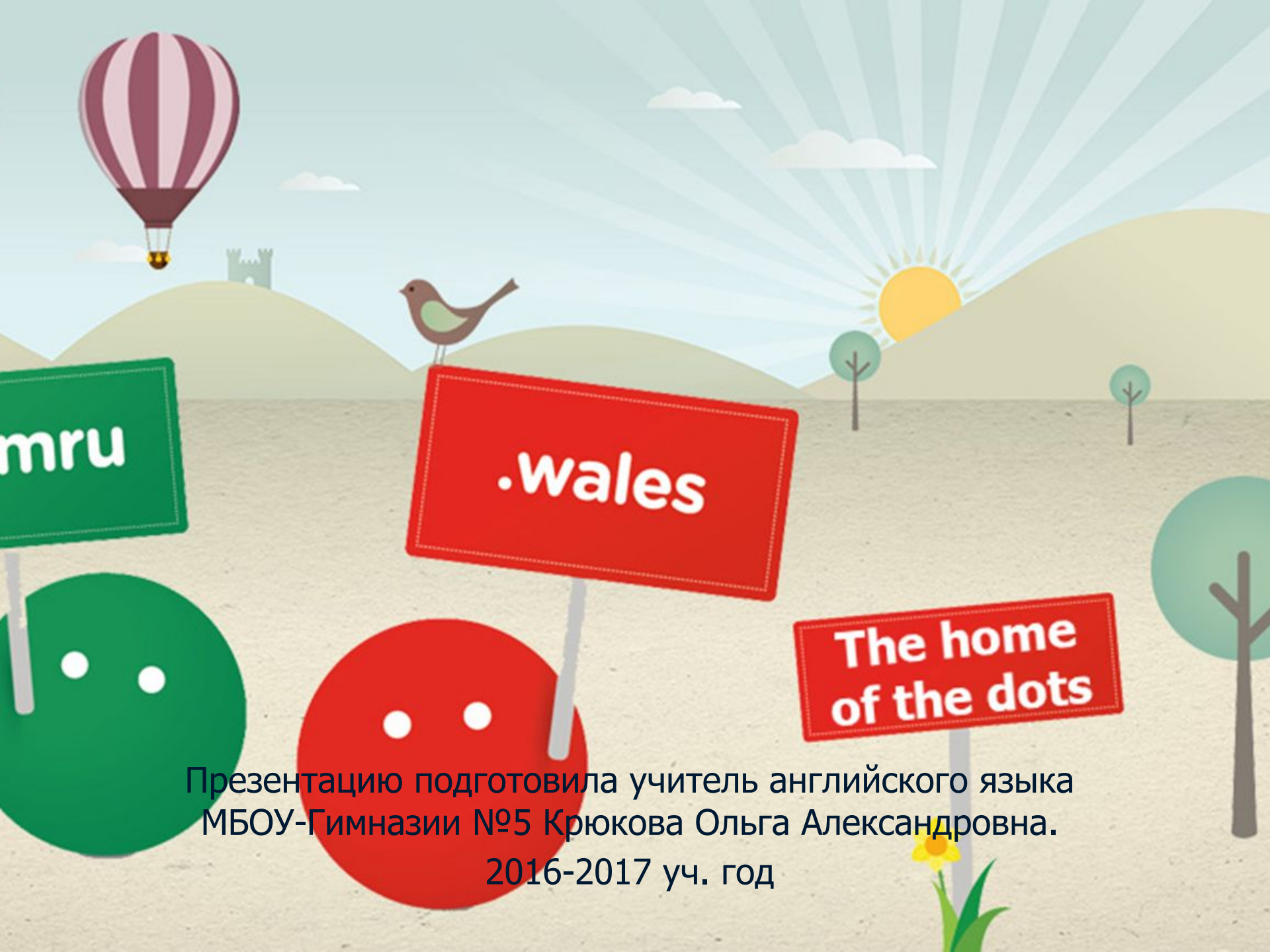


TAN HONNEN
INN
LAURENCE

TAN HONNEN
INN

TAN HONNEN
INN
LAURENCE

TAN HONNEN
INN



mru

.wales

The home of the dots

Презентацию подготовила учитель английского языка
МБОУ-Гимназии №5 Крюкова Ольга Александровна.
2016-2017 уч. год