

# Australia

An aerial photograph of the Sydney Opera House in the foreground, situated on a peninsula. The background features a dense urban skyline with numerous skyscrapers under a clear blue sky. The water of the harbor is visible in the lower half of the frame, with a small white sailboat in the bottom left corner.

- Автор: Никулина Екатерина Леонидовна,  
учитель английского языка,  
МБОУ «Средняя общеобразовательная школа  
с углубленным изучением отдельных  
предметов №74» г.Киров

# «The upside down world»



- Australia is the smallest continent.
- It is the world's largest island.
- It is an independent country.



# *Terra australis incognita* («the unknown southern land»)



- Asia is the continent nearest to Australia in the north.
- The icy shores of Antarctica lie in the south.
- New Zealand is to the east.
- To the west stretches the vast Indian Ocean.
- In the east the continent is washed by the Pacific Ocean.

National flag

---



The kangaroo and emu can be seen on Australia's coat of arms

---





# Climate

- The climate of Australia is varied, from tropical in the north to temperate in the south-east. Australia is situated in the Southern Hemisphere. That is why it has summer when we have winter.





# Australia is the driest continent

- In the center of it and in the west more than 50% of the land is desert – dry and uninhabited.



There are three deserts– the Great Sandy desert, the Great Victoria desert, the Gibson desert, situated between them.



A person wearing a helmet and riding gear is seated on a red motorcycle in a desert landscape. The terrain is sandy with sparse green vegetation and several large, dark, rounded rocks. In the background, there are low mountains under a sky filled with large, white, fluffy clouds. A bare, skeletal tree stands on the right side of the frame.

# The Great Sandy Desert



A landscape of the Great Victoria Desert. The foreground is dominated by vibrant red sand dunes with visible wind patterns. Scattered across the dunes are various green shrubs and small trees. In the background, a flat horizon line separates the desert from a clear blue sky. The overall scene is bright and sunny.

# The Great Victoria Desert





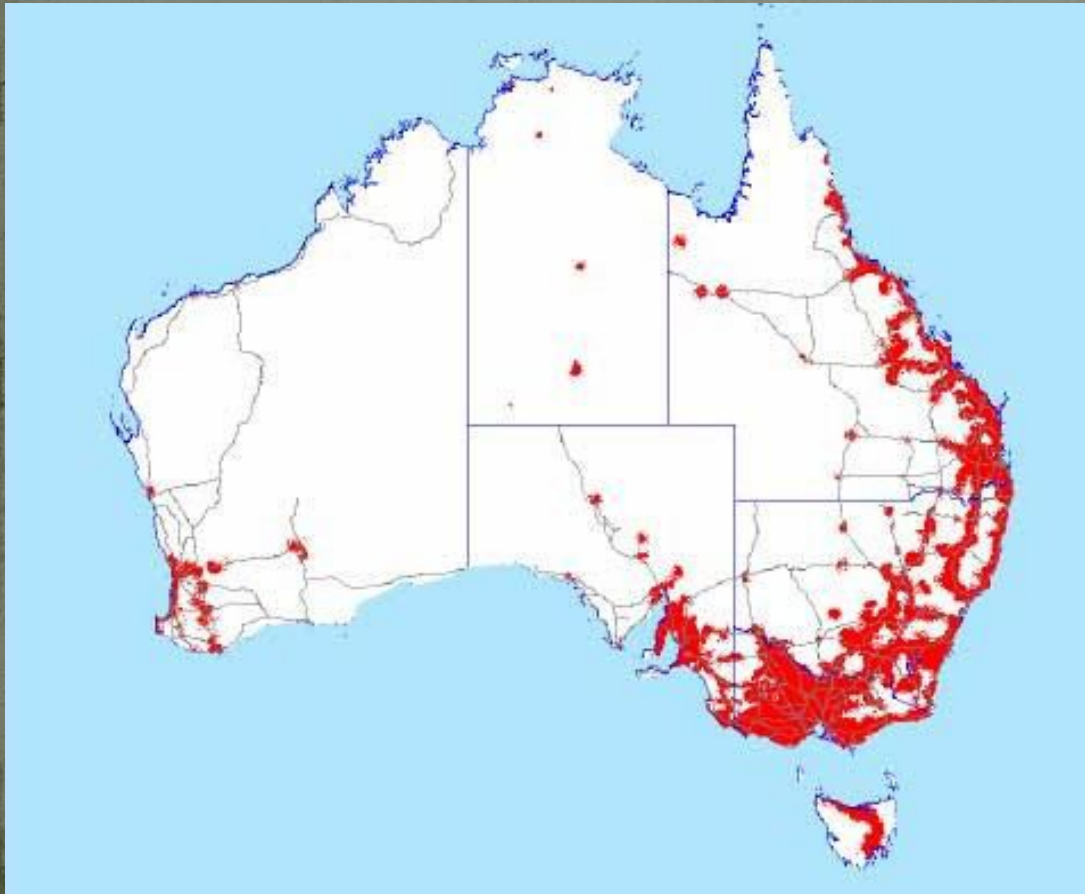
# The Gibson Desert

© S. Strike



# Population

- The population of Australia is about 23 million people.
- It is a multicultural country. 200 nations live there.



The Aborigines, the Australian natives, represent about 1.5 % of the population. Most of people live on the narrow coast of the east and southeast. About 70 % of people live in towns.



For about 50,000 years Australia was inhabited by Australians who spoke 250 languages.



Nowadays the official language of Australia is English, but it's a bit different from British English and American English.







Dutch explorers discovered Australia in 1606.



The first British colony was founded in 1788.

- On the 1 of January 1901
- the six colonies formed
- the Commonwealth of Australia.





- Australia is a developed country and one of the wealthiest in the world, with the world's 12<sup>th</sup> largest economy.





Canberra is the capital of Australia





# Canberra



- Canberra is situated on the Australian Capital Territory (ACT).
- It's the seat of the federal government.
- It was built in 1923 – 1927.
- The population of Canberra is 310,000 people.
- The place where the National University of Australia is situated.



# The National University of Australia





# The National Gallery of Australia









# There are six states and two territories in Australia

- VICTORIA
- NEW SOUTH WALES
- QUEENSLAND
- WESTERN AUSTRALIA
- SOUTH AUSTRALIA
- TASMANIA
- NORTHERN TERRITORY
- AUSTRALIAN CAPITAL TERRITORY





# New South Wales



- It is Australia's leading industrial state.
- Most people live along the east coast, and most of them are in Sydney.







**Sydney is the  
capital of the state**



# Sydney



- It is Australia's largest city with the population of 3,5 mln people.
- It was founded in 1788.
- It is the first European settlement.
- It's Australia's leading seaport.





- Sydney is a city of old and new buildings.



Sydney Opera House







- There`re a lot of lovely parks and gardens there.





# Victoria



- Most people live in the south.
- Sheep and wheat are the main products here.
- Citrus, fruits, grapes, peaches and apricots are grown along the Murray River.





Melbourne is the capital of the state and the largest city





- Melbourne is
- Australia`s second largest city..
- It was the seat of the federal government from 1901 to 1927.

It`s an industrial city and the financial centre of nation.





# Queensland



- It is Australia's second largest state. There are a lot of long beautiful sandy beaches.
- Its coast is a popular place for holidaymakers.
- Most of land is too dry for farming.
- Bananas and other tropical fruit are grown here.



Brisbane, its capital, is  
situated on the east coast





# Western Australia

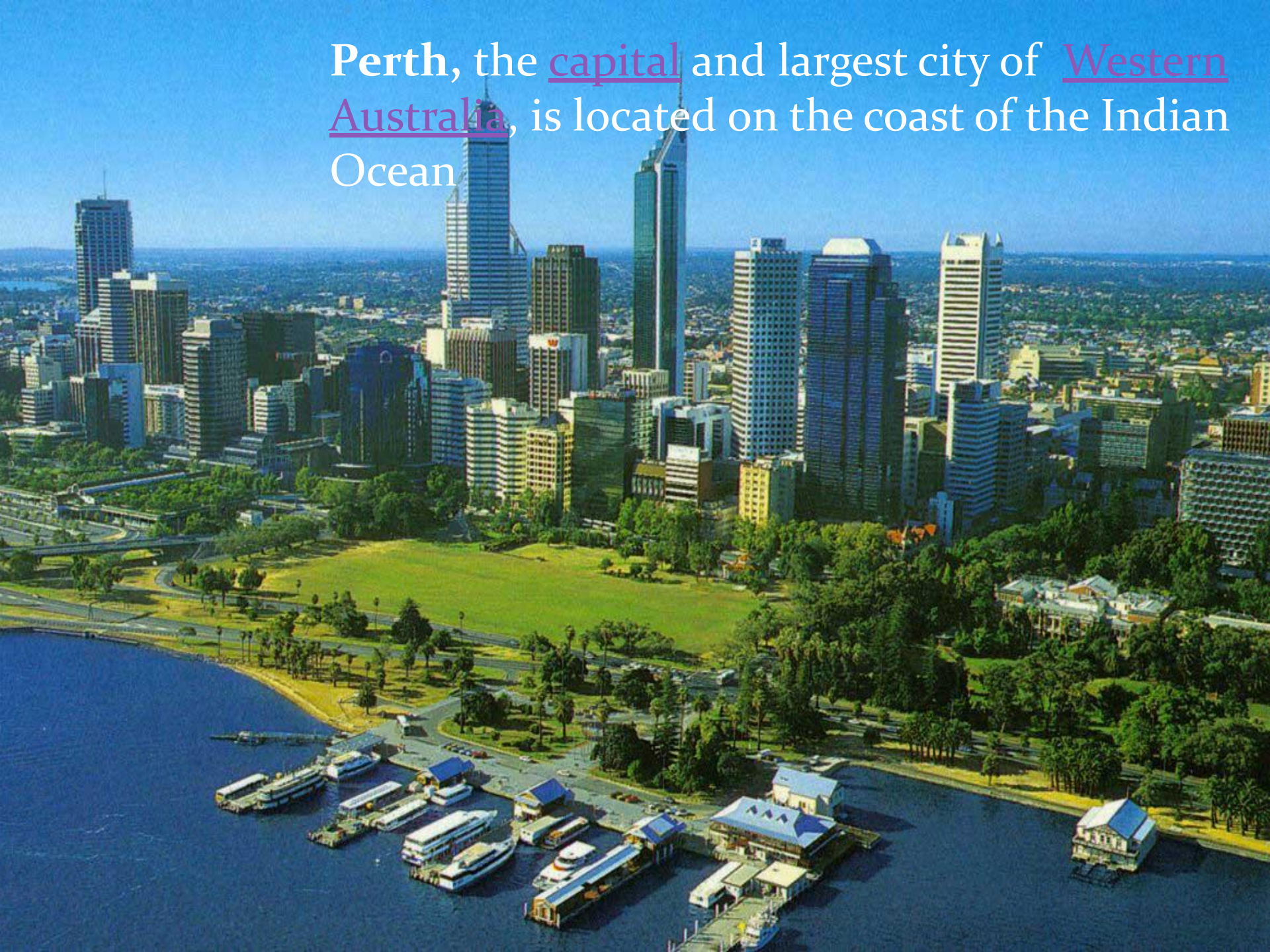


- It's dry and inhospitable except the southwestern corner of the state.
- Nearly all of the state's farms, sheep stations, and fruit gardens are situated there.





Perth, the capital and largest city of Western Australia, is located on the coast of the Indian Ocean





# South Australia



- It's the 3<sup>rd</sup> largest state.
- Most of South Australia is too dry for farming.
- Wheat and fruit are grown along the lower part of the Murrey River.







Adelaide is the capital and the largest city in South Australia



# Tasmania



- It's the island state.
- Tasmania is one of the few places in Australia that have enough rain all year.
- It's Australia's leading producer of apples, pears, berries and potatoes.





**Hobart is the capital of  
Tasmania**



# Northern Territory



- It is the least populated and least developed part of Australia.
- Darwin is its capital and the only large settlement in the north.



Alice is the only town in the south.





Darwin is the capital of  
the state



# Little peace of amazing nature

- For a continent 4,000 km across and 3,750 km from north to south Australia has an amazing set of natural environments and wildlife.





# Uluru



- Uluru is the largest rock in the world.
- It is a single piece of red limestone formed about 550 mln years ago.



It`s 335 m high and 9 km long.





# Bondey(Bondi) Beach



**Bondi Beach** is a popular beach . It is located 7 km east of Sidney centre.

Bondi Beach is one of the most visited tourist sites in

**Australia.**



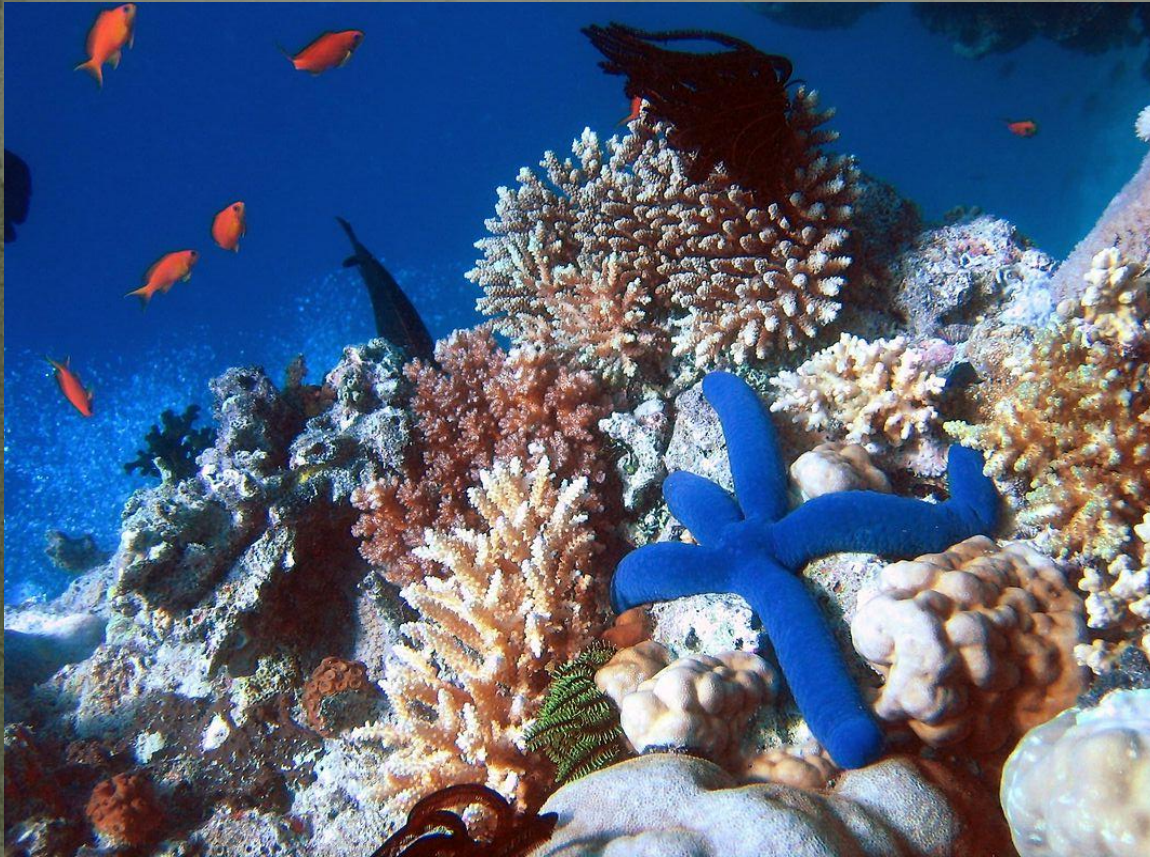


# The Great Barrier Reef





# The Great Barrier Reef



- It's the largest collection of coral reefs in the world.





# The Great Barrier Reef



- Corals of different shapes and sizes grow on the ocean floor in warm , clean sea-water.



# The Great Barrier Reef



- The Great Barrier Reef is full of unique fish, plants and animals.





# The Great Barrier Reef

- A lot of tourists come to dive down and explore the fantastic underwater garden.





There are 530 native species of bird, 230 types of mammal, 300 species of lizard, 140 types of snake and 2 types of crocodile in Australia.





- Though most of the territory is too dry or too hot Australia has an extraordinary collection of birds, animals. Many of them are found only there. Australia is the home of two of the world's most primitive mammals- the platypus and the echidna.







- There are 50 different kinds of kangaroos in many colours and sizes.
- Some kangaroos may be as tall as a man and some are as small as a cat.

- Koala resembles a teddy bear. It spends most of its life in eucalyptus trees and eats only the leaves of these trees.







- About 400 species of birds in Australia are found nowhere else in the world.



There 55 species of parrots there. They are very colourful.

The emu is the most interesting bird in Australia. It is big and cannot fly.





- Australians love to play and watch sports.



In 1956 the Olympic Games were in Melbourne.




In 2000 the Olympic Games were in Sydney.







An aerial photograph of a tropical coastline. The water is a vibrant turquoise color, transitioning to a deeper blue further out. A prominent white sand beach curves along the shore, with a small inlet or bay. The land is covered in dense, dark green forest. In the distance, several small islands are visible in the blue sea. The overall scene is a beautiful representation of a wild, natural landscape.

Australia is a  
wonderful place.  
Everybody can enjoy  
the power and beauty  
of wild nature.



# Quiz

1. What is of Australia?
2. How many parts are there in the country?
3. What`s the population of the country?
4. How many nationalities are there in Australia?
5. How many % of the population do the Aborigines represent?
6. When was Australia discovered by Europeans?
7. When was the first English settlement founded?
8. What is the capital of Australia?
9. What is the largest city in the country?
10. Which city is the financial center of nation?
11. What animals can be seen on Australian`s coat of arms?
12. What animals are found only in Australia?
13. When and where were the Olympic Games?
14. What is Australia famous for?



# Источники информации

- «English» 6 класс, О.В. Афанасьева, М., «Просвещение», 2012г.,
- «Enjoy English» 6 класс, М.З. Биболетова, М., «Титул», 2012г.,
- «Enjoy English» 7 класс, М.З. Биболетова, М., «Титул», 2014г.,
- «Enjoy English» 8 класс, М.З. Биболетова, М., «Титул», 2014г.,
- «Enterprise-3», В. Эванс, «Экспресс публишин», 2011г.,
- «Английский язык. Книга для чтения VIкласс», О.В. Афанасьева, М., «Просвещение», 2011г.,
- Английский язык. Рабочая тетрадь VIкласс», О.В. Афанасьева, М., «Просвещение», 2011г.,
  
- [www.interactive-english.ru](http://www.interactive-english.ru)
- [www.goodfon.ru](http://www.goodfon.ru)
- [www.myshared.ru](http://www.myshared.ru)
- [www.shutterstock.com](http://www.shutterstock.com)
- [www.kole8.com](http://www.kole8.com)
- [en.boolokam.com](http://en.boolokam.com)
- [turpogoda.ru](http://turpogoda.ru)
- [real-politique.blogspot.ca](http://real-politique.blogspot.ca)