

# Hotel TATIANA



ГБПОУ ТК № 34 Вареник С.С.

# Some words about hotel...

**Tatiana Hotel** is a business class hotel offering a unique combination of European quality and Russian hospitality.



# Tatiana Hotel is located in the downtown in Moscow.

It is conveniently situated close to Serpukhovskaya and Paveletskaya metro stations and Paveletskaya railway station is also in 10 minutes of walk.





Cozy and graceful **restaurant Tatiana** is an ideal place for meetings, **business breakfast** and **leisure**.



# Fitness centre and Sauna

Welcome to our **fitness centre** and **sauna** where you can relax and have a rest after a busy day.

These services are included in the cost of the room.



# The bedrooms



**Standard Room**  
(from 9 600  
rub./day)

**Superior**  
(from 11 100  
rub./day)

**Junior Suite**  
(from 13 600  
rub./day)

**Suite**  
(from 16 600  
rub./day)

**Apartments**  
(from 9 600  
rub./day)

# Hotel TATIANA

- Most of Moscow's major attractions, including the Kremlin and Red Square, are easily accessible from the Tatiana Hotel by public transport. Closer to the hotel, the biggest attractions are the Danilov and Novospasskiy Monasteries, two of a chain of fortified monasteries that surrounded medieval Moscow. Both have been substantially restored, and contain numerous gems of Russian church architecture.





# Hotel TATIANA

- The hotel offers the first-class service and the most modern facilities for their guests. It is a new building. The hotel is located not far from the center of Moscow.





# Hotel

## TATIANA

- This hotel has many guestrooms that are furnished with air conditioners, cold and hot shower, telephone, Wi-Fi, interactive TV and minibar. Each floor has a special smoking room. There is also a car park, family rooms and an elevator in the hotel.



# Hotel TATIANA

- The recently introduced Aero express rail link is the fastest way to reach central Moscow, and the onward journey by metro is very convenient for the Tatiana Hotel. By taxi or transfer, the journey will take between 60 and 90 minutes.



# Hotel TATIANA

- Arriving by taxi from Domodedovo to the Tatiana Hotel can take about 70 minutes. The faster public transport alternative is to take the Aeroexpress train to Pavelets Station, a short walk from the hotel.



# Hotel

## TATIANA

- Komsomolskaya Ploshchad, also known as "Three Stations Square", is about 5 km north of the Tatiana Hotel, and a journey by taxi or pre-ordered transfer should take no more than 25 minutes. If you prefer to use public transport, take the brown circle line from Komsomolskaya Metro Station (connected by tunnels to all three mainline stations) to Paveletskaya Metro Station, which is about ten minutes' walk from the Tatiana Hotel.

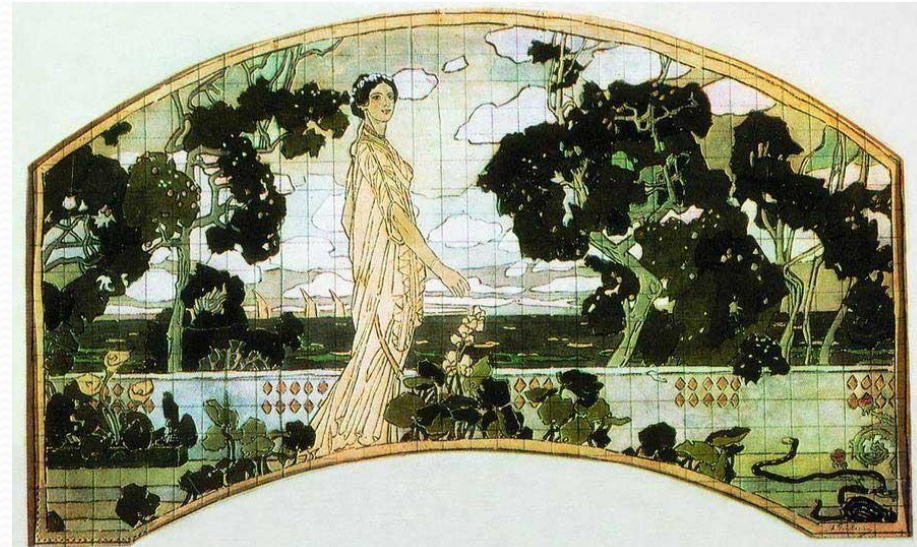


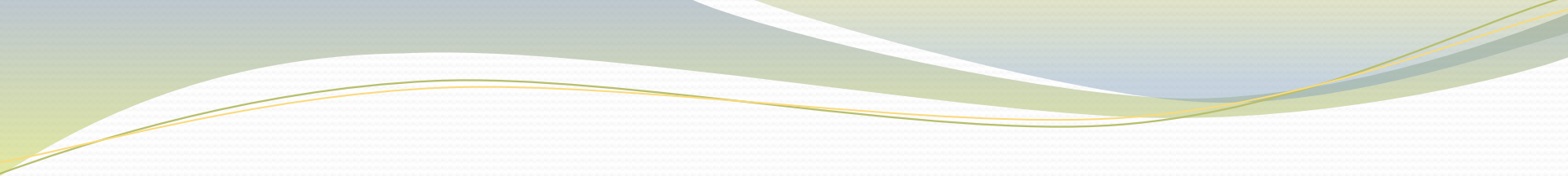
Лобби - Lobby



# Some recommendations for improvement of the hotel «TATIANA»

- to improve the adjacent area, add more trees and shrubs;
- to add historical attributes in the lobby area;
- to add more paintings and art objects.





THANK YOU FOR YOUR ATTENTION!