

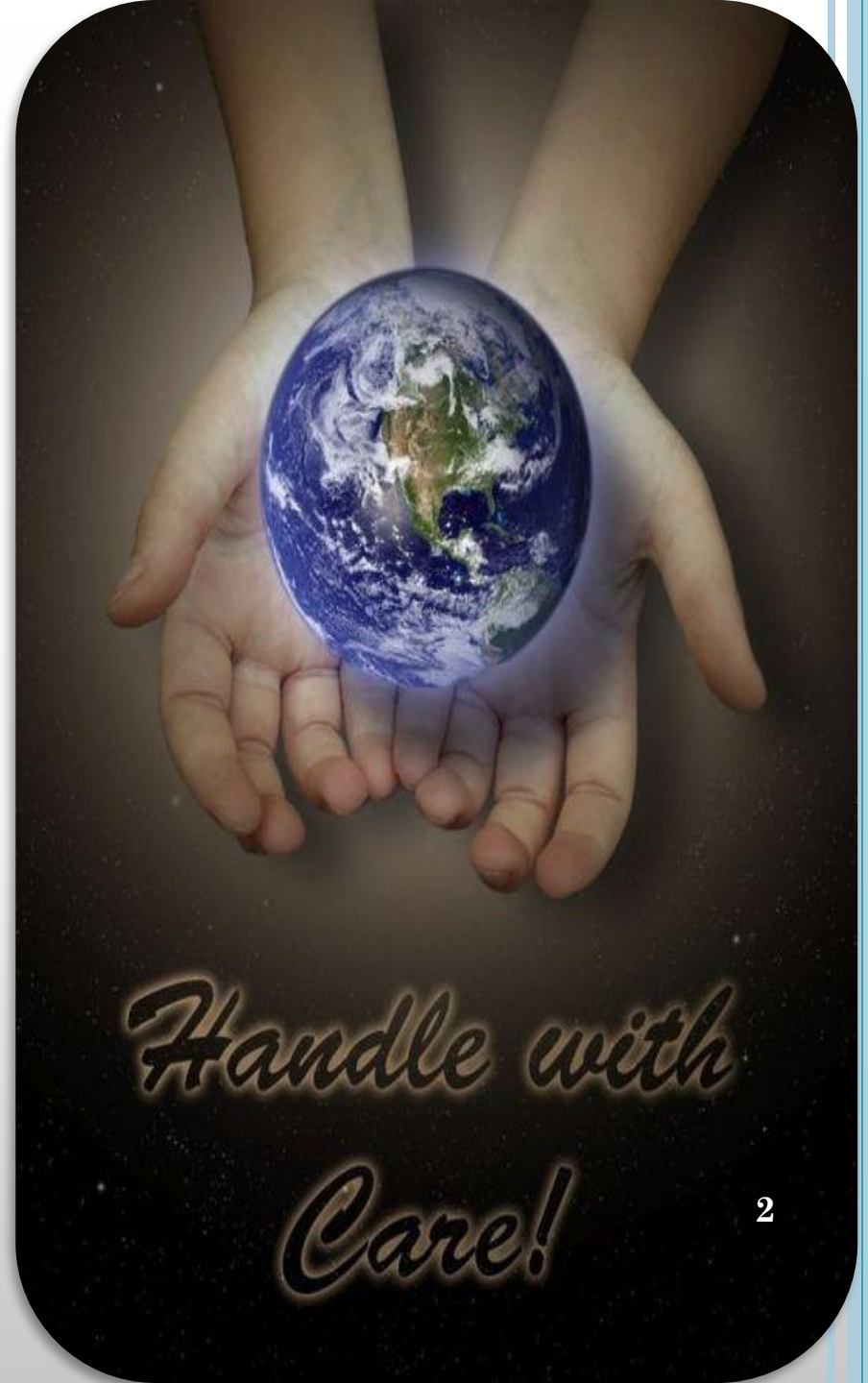


1

**Составитель – Аленчикова С.А.  
учитель английского языка  
МОУ Гимназия №16 «Интерес»**

# CONTENTS

- ❑ BEAUTIFUL PLANET
- ❑ WHAT DO YOU SEE?
- ❑ PROBLEMS
- ❑ HOUSE EFFECT
- ❑ POLLUTION
- ❑ STOP USING PLASTIC BAGS
- ❑ SAVE WATER
- ❑ FORESTS



*Handle with  
Care!*

# BEAUTIFUL PLANET

- We live on a beautiful planet. There are a lot of magnificent creatures on it. Different species of mammals, reptiles, birds and flowers surround us. But humans don't note them.



# What do you see?

- Look out of the window! What do you see? Dark constructions, dirty streets, stray dogs, many dumps. I can't think that the human makes our planet such terrible! Humans destroy our planet.



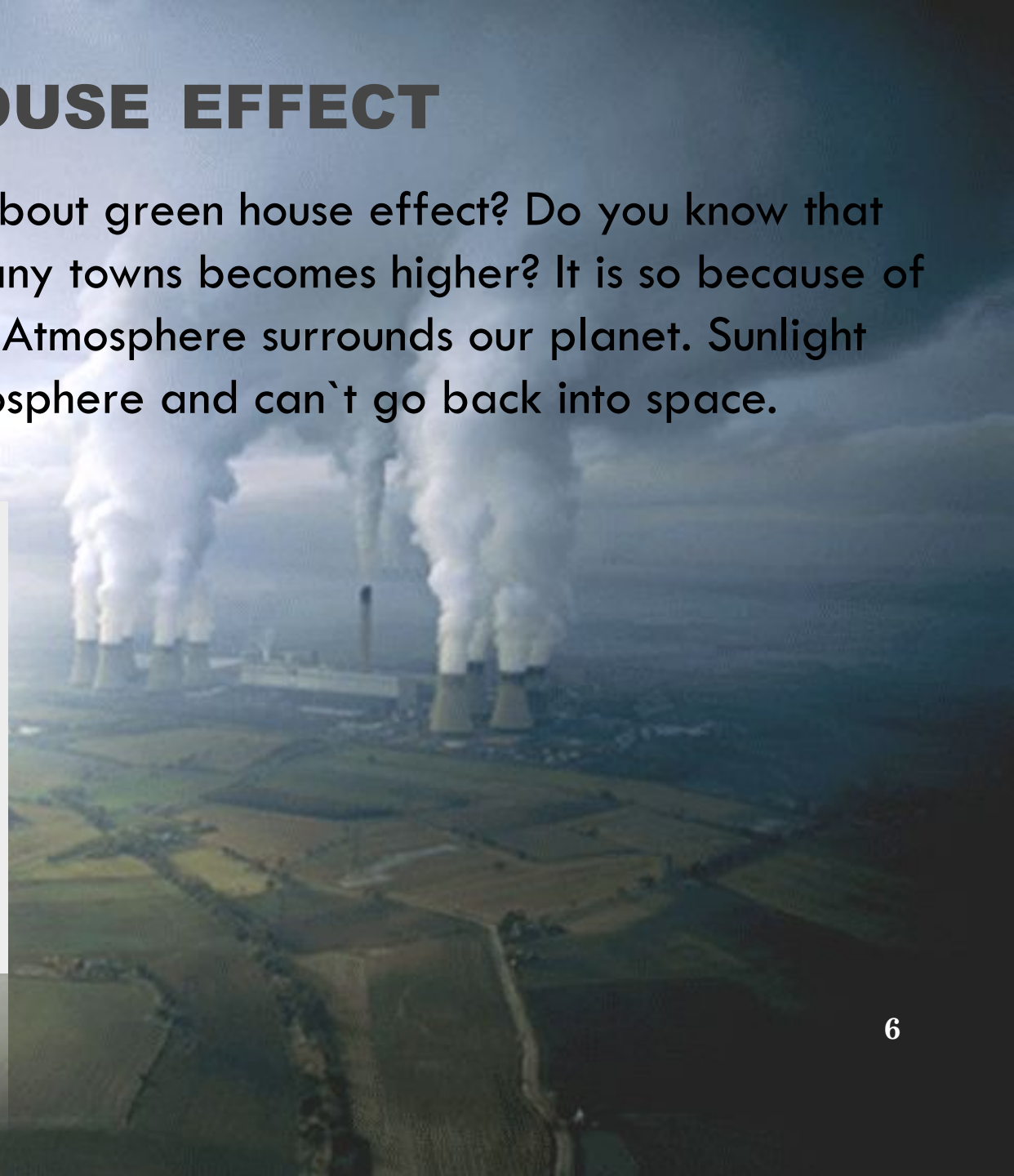
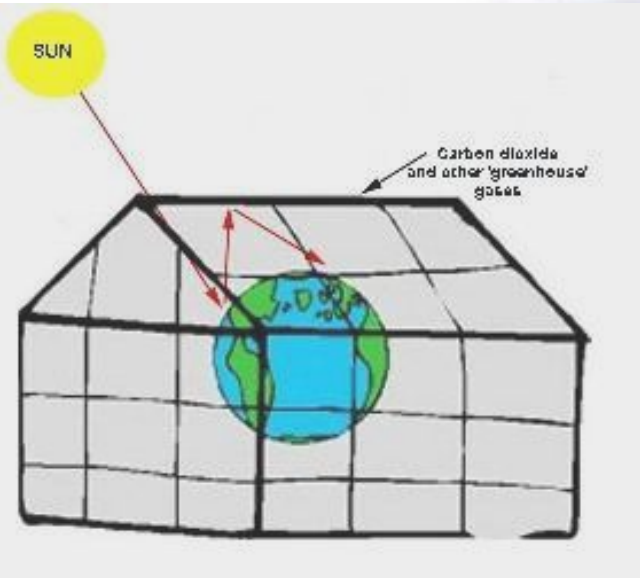
# PROBLEMS

Nowadays people must solve such problems as green house effect and pollution.



# HOUSE EFFECT

- What do we know about green house effect? Do you know that the temperature in many towns becomes higher? It is so because of green house effect. Atmosphere surrounds our planet. Sunlight warms the atmosphere and can't go back into space.



# POLLUTION

- And what do we know about pollution? At first, people will be healthier if pollution of curs stops. Secondly, if different countries test nuclear weapons, it will cause radioactive pollution. And if factories merge waste in rivers, water will be poisoned in those ones.



# STOP USING PLASTIC BAGS

People utilize 4 trillions of packages a year.

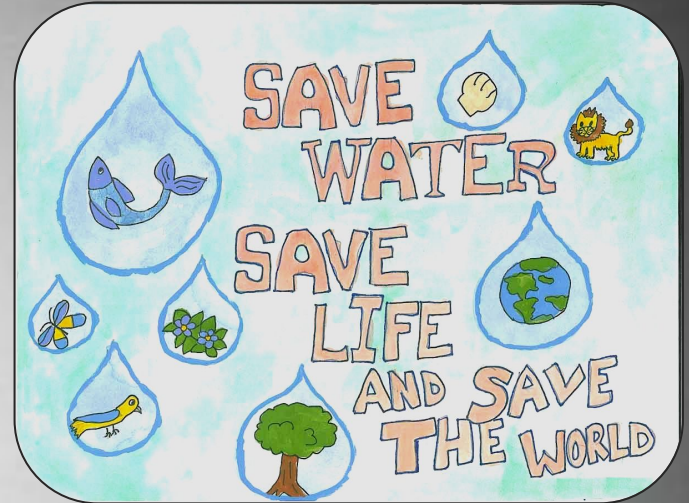


In the environment the thrown out packages are being saved for long time and not exposed to biological decomposition.



# SAVE WATER

Nearly 1 million people don't have access to clean, safe drinking water.



SAVE WATER. SAVE LIFE.

Drinking-water is badly getting worse and less on the Earth.

# FORESTS

- Today the volume of the forests' felling exceeds quite often in once or twice the volume of natural renewal.



# CONCLUSION

- People! Let`s keep our planet! Let`s keep our animals and plants! If we decide ecological problems, we will save our beautiful planet.

