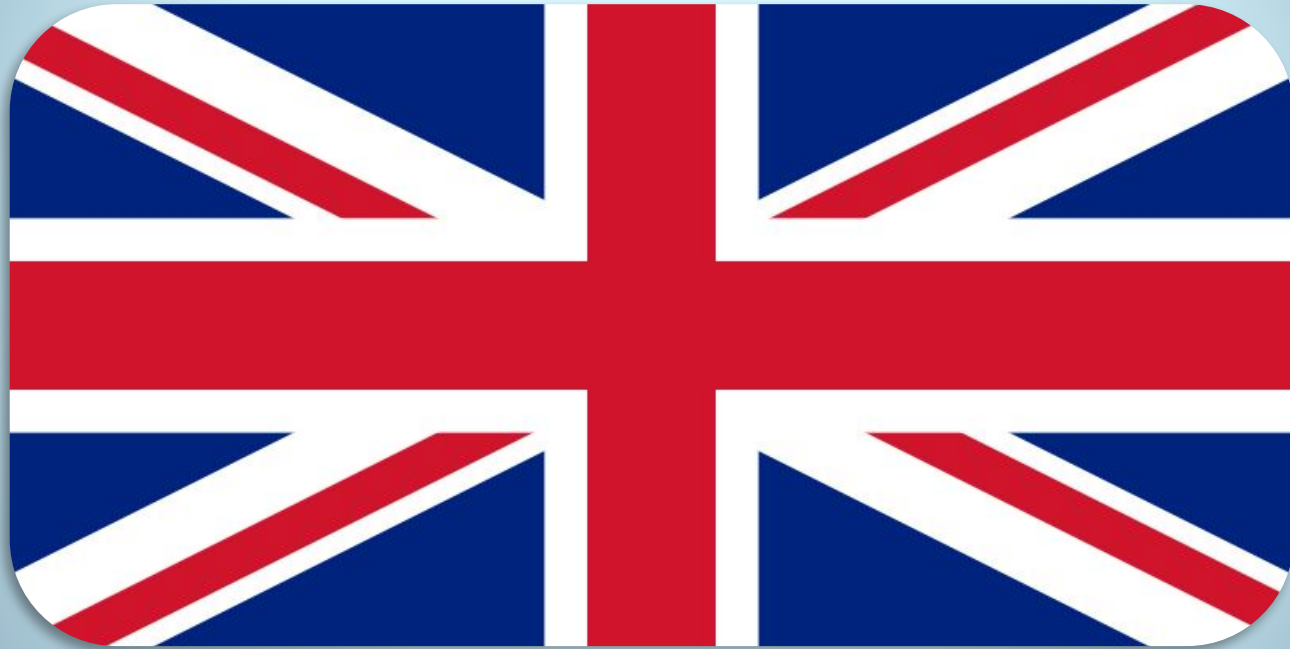


Great Britain

The official name of the country is The United Kingdom of Great Britain and Northern Ireland. The country is situated in the north-west of Europe and consists of two large islands, Great Britain and the Isle of Ireland.



The flag of Great Britain



The symbols of regions



England



Northern Ireland



Wales



Scotland



The City of London



The West End of London



Westminster



Westminster Palace



The Royal Courts of Justice

Westminster Abbey





Big Ben



The Tower of London

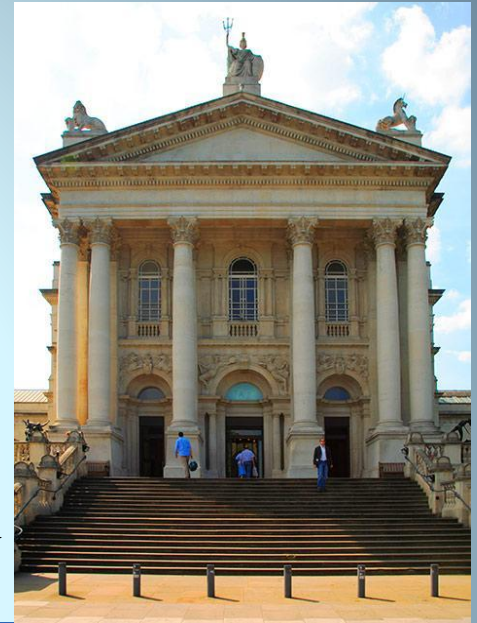


Buckingham Palace

There are many nice squares ,museums, libraries and galleries in London.



Trafalgar Square



The Tate Gallery



The British Museum

Madam Tussaud's Museum

Madam Tussaud's Museum is the most famous in London. It has a great collection of wax figures.





The East End of London



There are many cars and buses in London. There is the Tube (an underground) in London too.

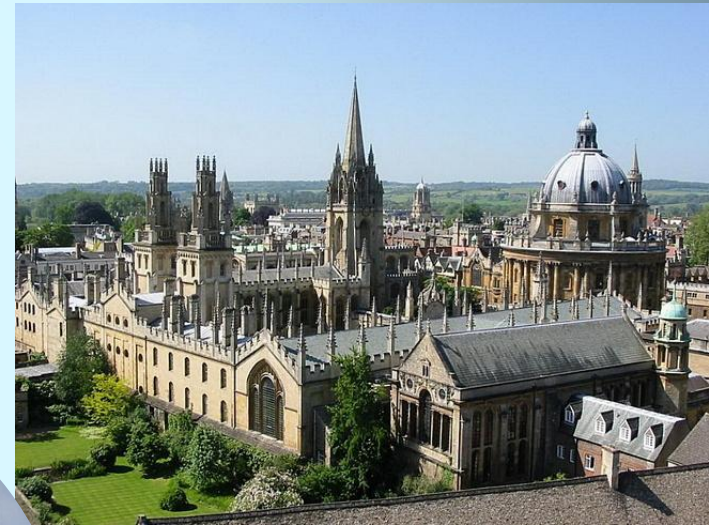


Education

Schools in Britain are two types: free state schools and public schools, which are for money. The biggest universities are Cambridge, Oxford and London University.



Cambridge



Oxford



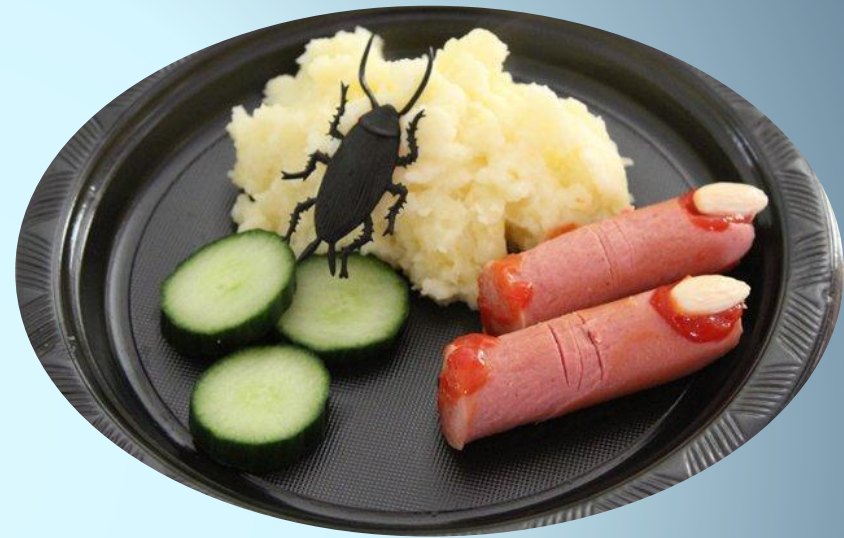
London University

British holidays and traditions

Christmas is on the 25-th of December.



Halloween is a holiday loved by all children. It takes place on the 31-th of October.



Guy Fawkes Night



St. Valentine's Day



Gardening is the most famous customs in Great Britain. Most of the English keep small gardens full of flowers behind their houses or around them. Another of the well-known English traditions is **5 o'clock tea**.

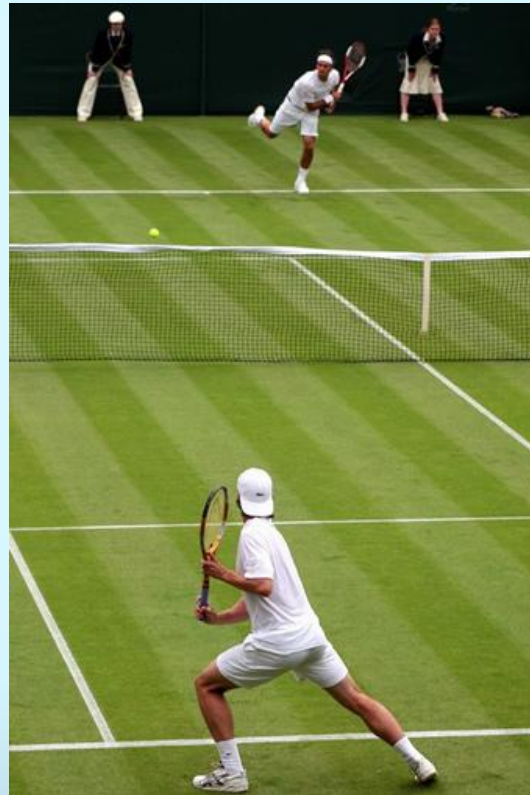


British sport

Sport plays a very important role for the Britain. The national sports of Great Britain are: football, golf, lawn tennis, table tennis, racing and darts.



Golf



Lawn tennis

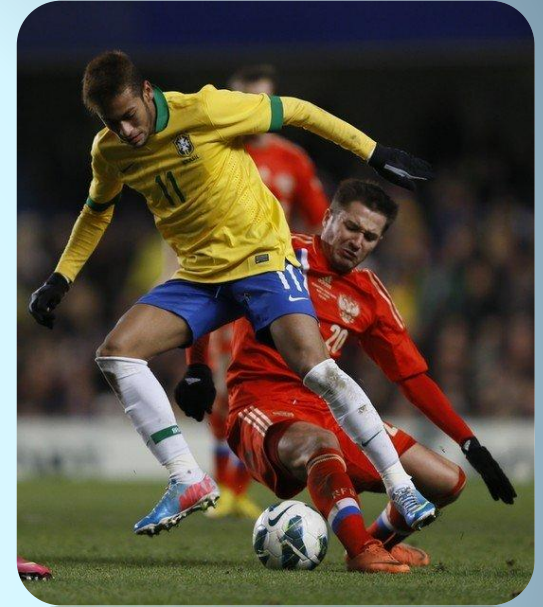
Darts



There are two kinds of football in Britain. They are soccer and rugby. The British are fond of racing and its different kinds.



Horseracing



Soccer



Rugby



Dog racing