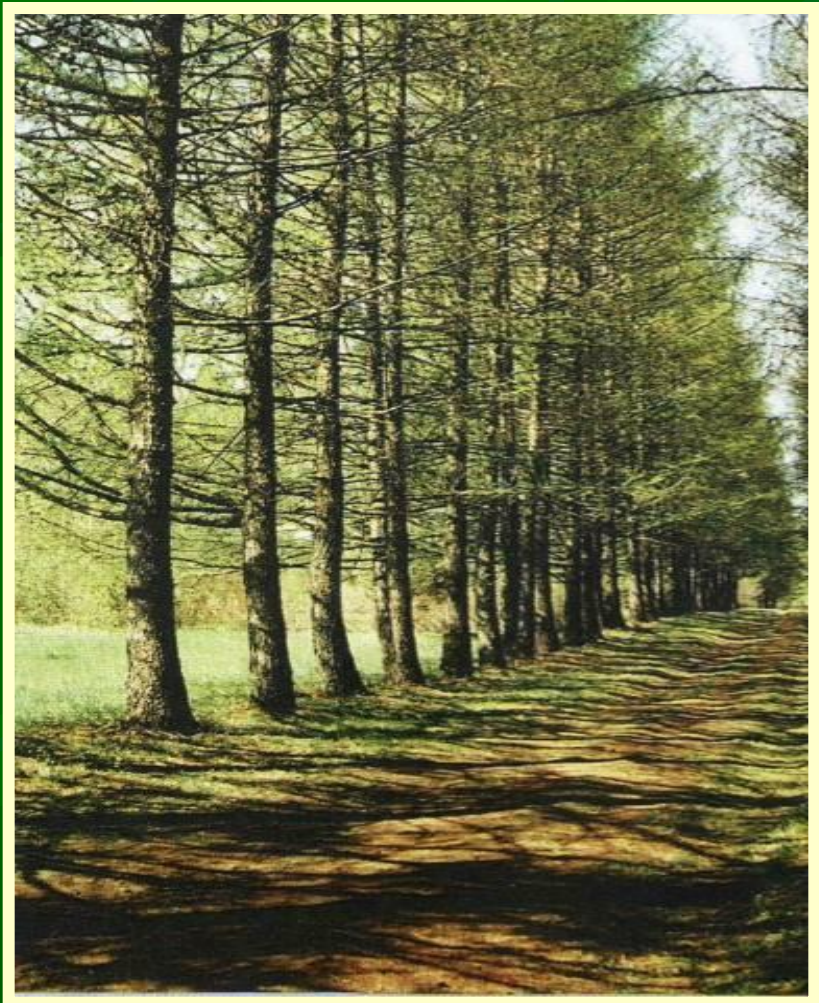


THE MONUMENTS OF NATURE IN KIROV

ZARECHNY PARK



This wood is located on the right bank of the Vyatka (river) near Kirov town.

It had the name The Red Wood over the Vyatka river.

ZARECHNY PARK

- ❖ It had its name beginning with 1934 and was the lovely place for the rest of Vyatka citizens.
- ❖ In 1989 the so called ecological path was made there. It is the walking way about 3 km.



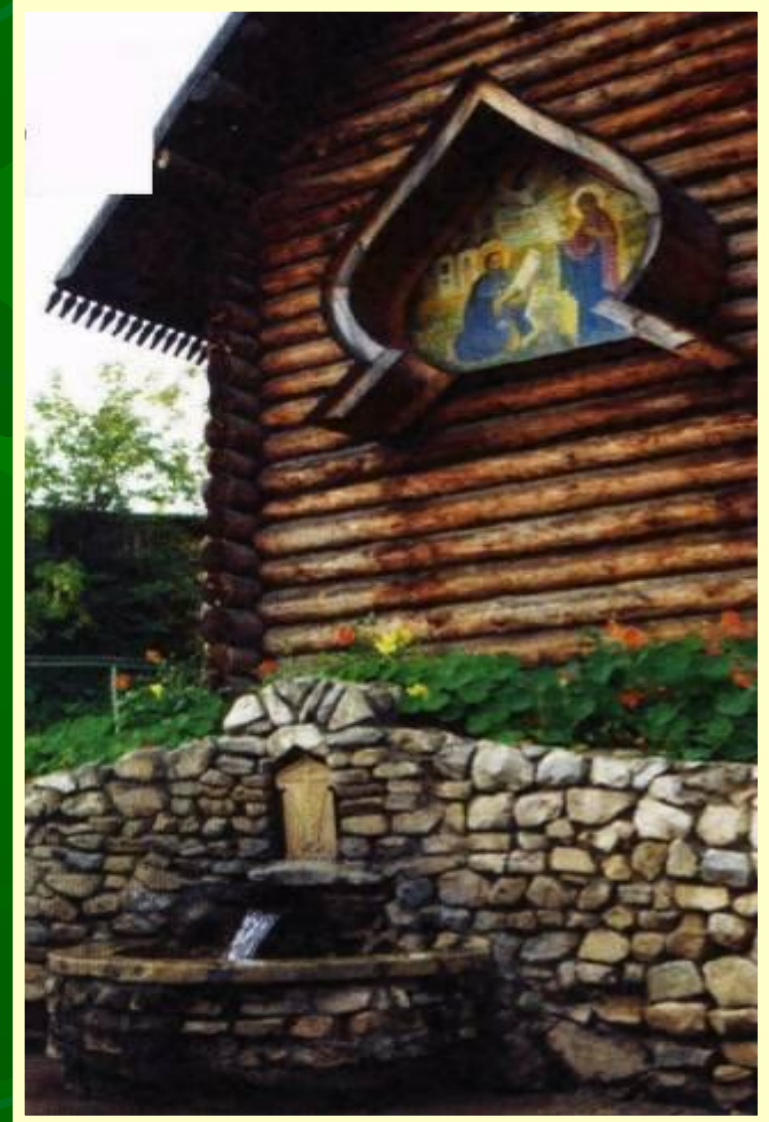
ZARECHNY PARK



МБОУ СОШ №52 г.Кирова

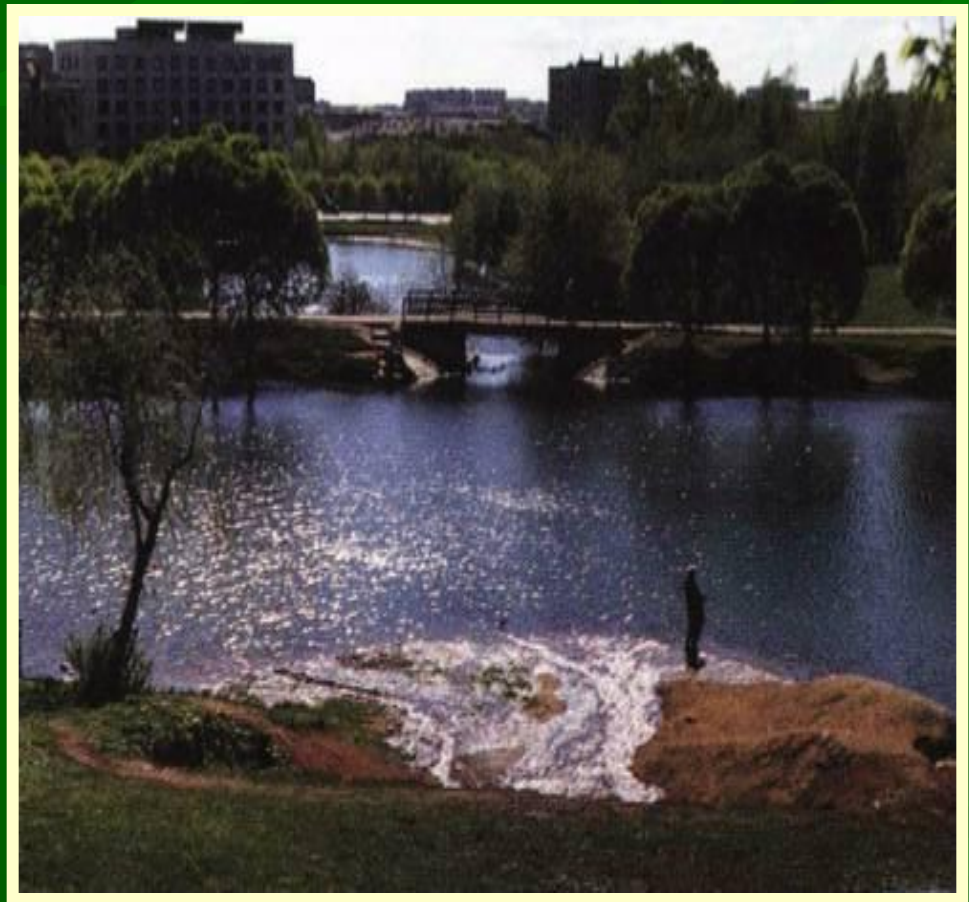
THE SAINT WATER NEAR TRIFANOV MONASTERY

- ❖ It is the so called saint water (very clean and useful for health).
- ❖ Citizens believe that this water will help them to avoid the illnesses if they believe in god.

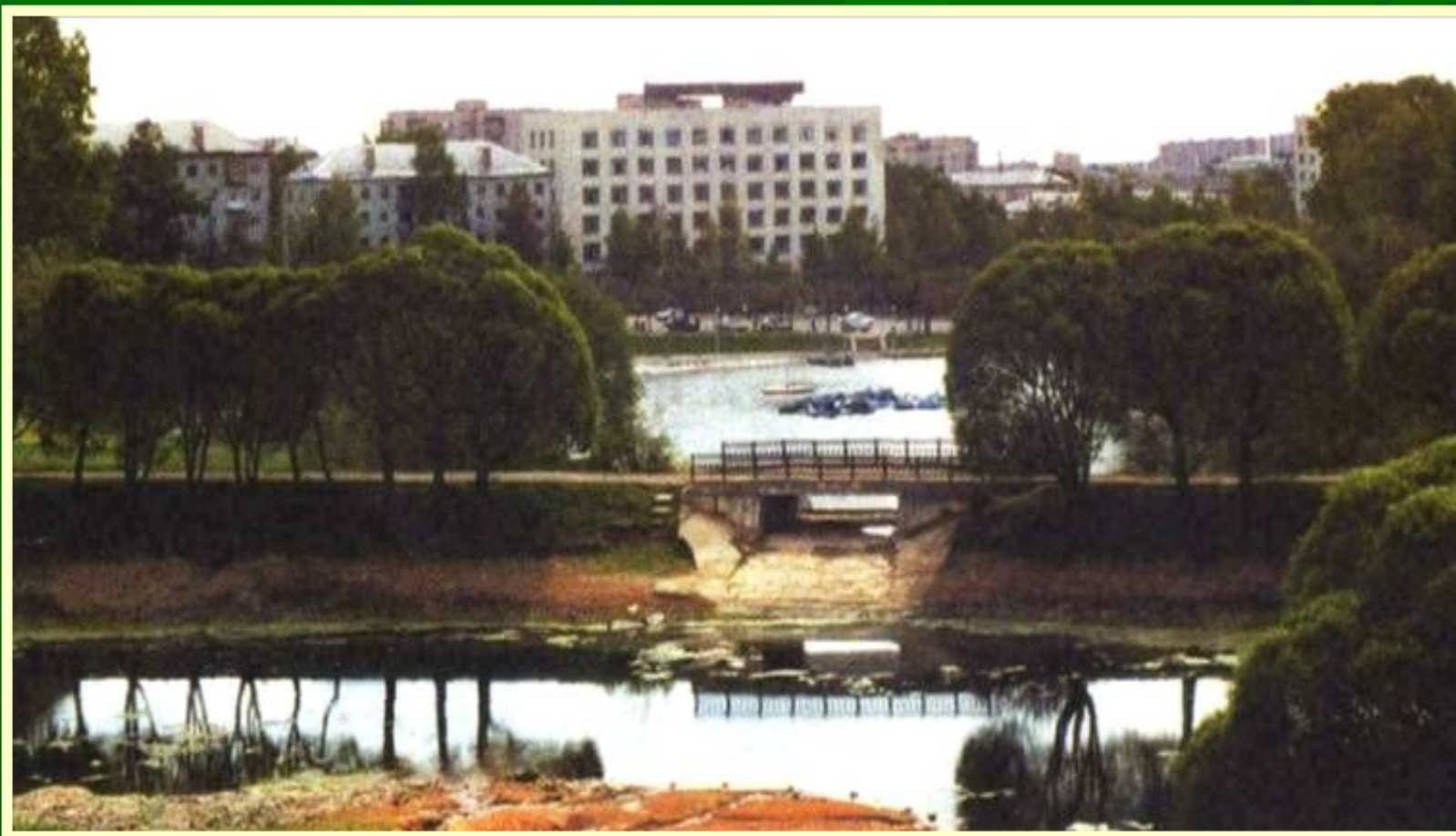


SPRINGS IN THE PARK OF KIROV

- ❖ It is water welling up from the Earth. There are over 20 springs in this park. People have decorated them with stones.
- ❖ These springs stream to two ponds.



SPRINGS NEAR THE DIORAMA IN THE PARK OF KIROV



МБОУ СОШ №52 г.Кирова

LAKE KELEINOE

- ❖ This lake is situated near the settlement Ganino, it is the place for the rest of the people.
- ❖ Wonderful pine wood is here too.



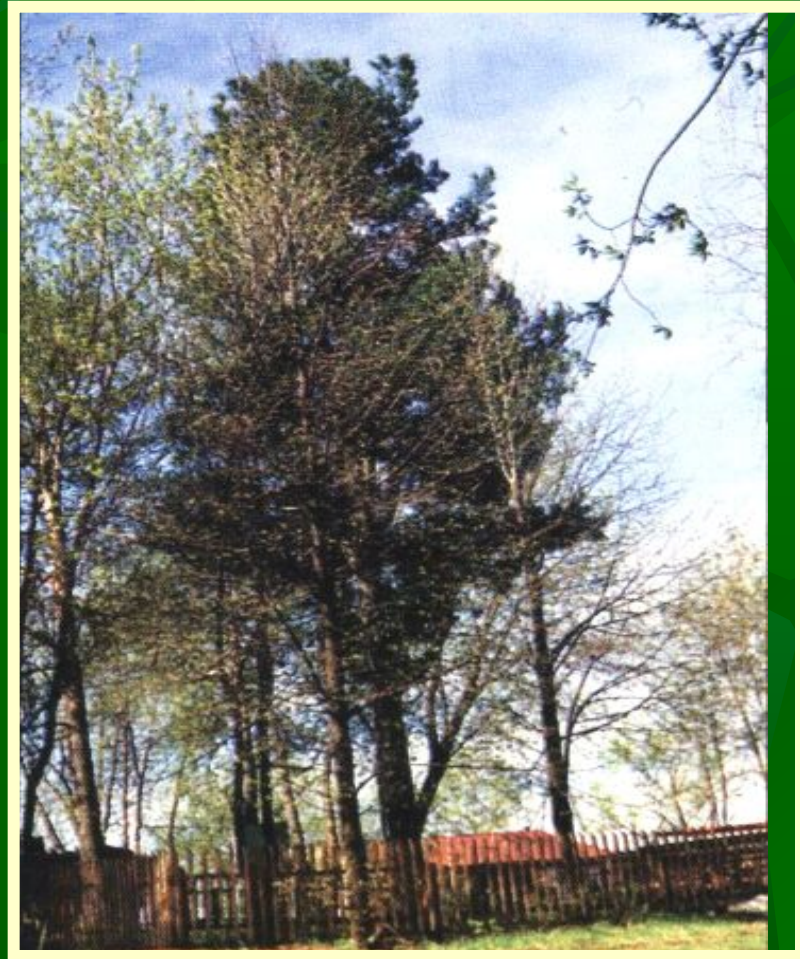
BLACK LAKE NEAR THE SETELMENT OF KOMINTERN



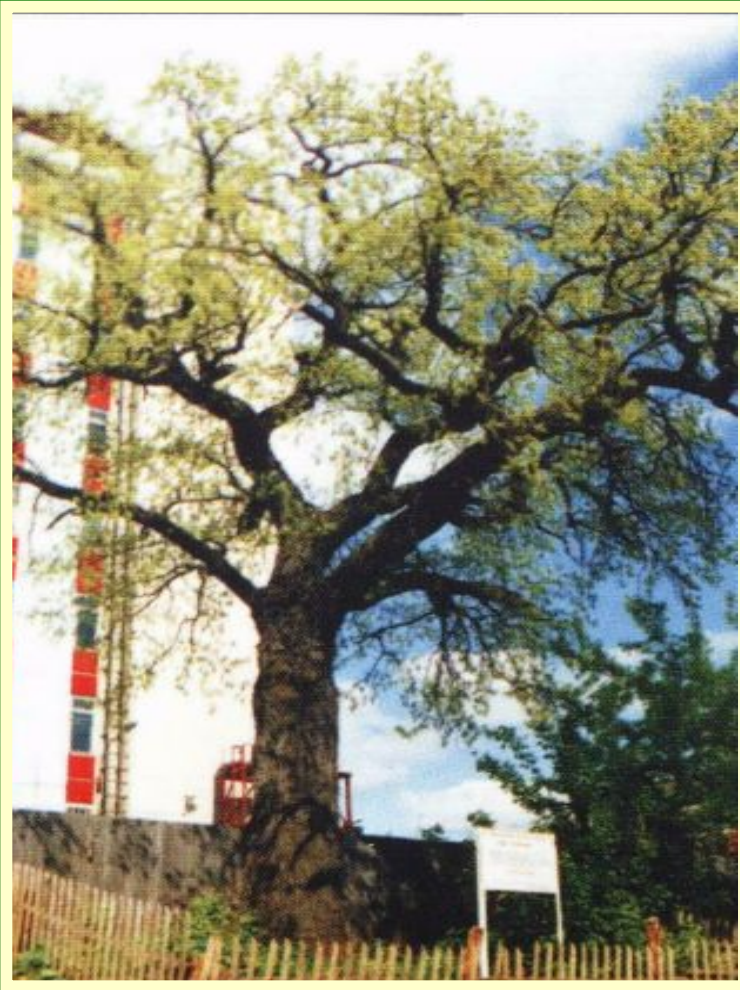
- ❖ It is also the best place for the rest of people.

THE SIBERIAN PINE IN SLOBODA FILEIKA

- ❖ **The lonely Siberian Pine.**
- ❖ **We have no such trees in our forest.**



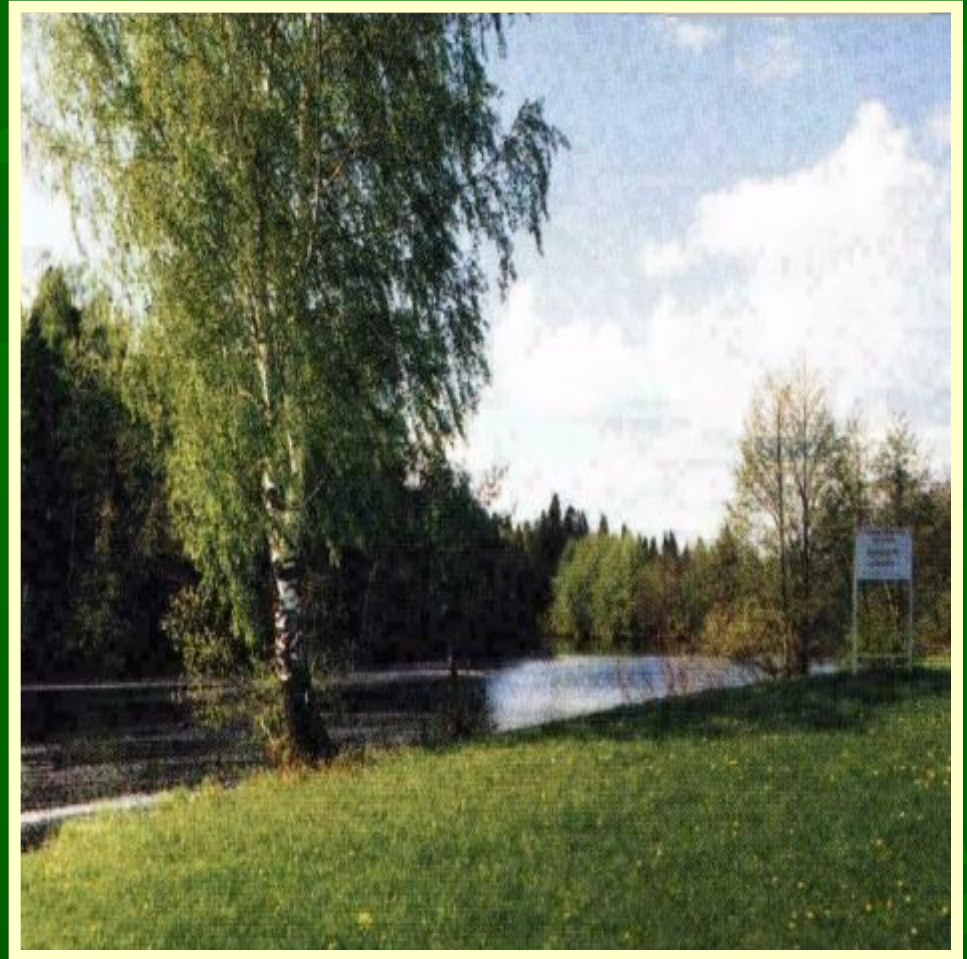
THE OLD OAK



- ❖ It is one of the most beautiful oak in our town.
- ❖ It was planted in 1787, its height is 21 m. and its diameter is 104 sm.

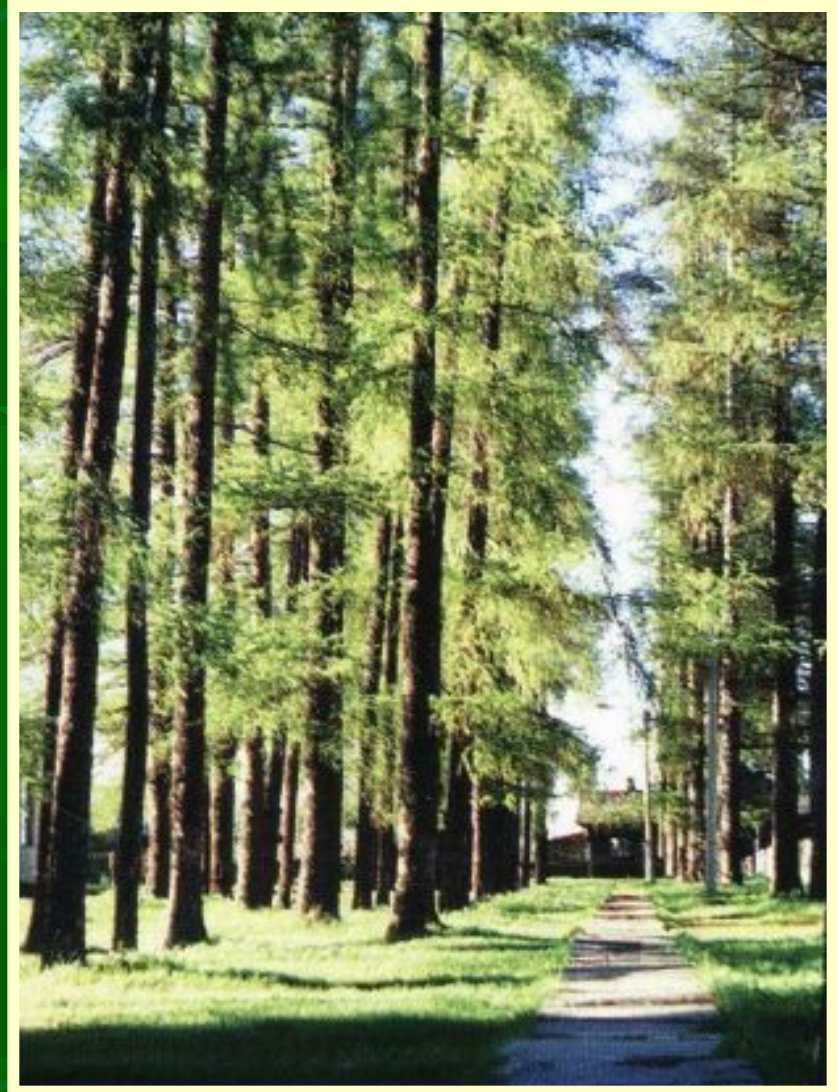
LAKE KRIVEL

- ❖ It is the picturesque old Lake near the settlement Sidorovka on the right bank of the Vyatka.
- ❖ The length is 650 m. and wide is about 50 m. It is the place for the rest and for fishing.



THE LARCH PATH IN THE VILLAGE VERKHNEYA TALITSA

- ❖ The larches are planted in 5 rows – 100 m. length. The general length is 200 m. The wide is 12m. and the height is 45 m.



THE PARK OF DENDROLOGY IN KIROV REGION

- ❖ It is situated near Novovyatsk town not far from the bank of the Vyatka. Its total area is 50,6 he.
- ❖ One can find about 111 kinds of plants there.



BOTANICAL GARDENS

- ❖ Its total area is about 3 he. You can find over 180 kinds of different plants there.
- ❖ There are not only native kinds of plants but also one can find many interesting trees and flowers from many countries of the world: North America, Asia, Sothern part of Russia.



FUTURE PARK OVER THE MAIN RIVER -VYATKA

- ❖ People in Kirov would like to make a new park for the comfortable rest out of doors and in order to preserve our valuable ecological complex.



OUR FAMOSE RAVINE



МБОУ СОШ №52 г.Кирова

The background is a solid green color with a pattern of faint, overlapping leaf silhouettes in a slightly darker shade of green. The leaves are scattered across the frame, creating a natural, organic feel.

**THANK YOU FOR YOUR
ATTENTION!**

Источники:

Энциклопедия земли Вятской Природа – Киров
1997

Красная книга Кировской области //

Электронный ресурс

hi-bio.narod.ru/redbook/content.html

www.kotelnich.info/priroda/redbook/index.shtm

фото из личного архива