



How
Are
You?



Aa Bb Cc Dd Ee Ff Gg

Hh Ii Jj Kk Ll Mm Nn

Oo Pp Qq Rr Ss Tt Uu

Vv Ww Xx Yy Zz



Larry



Lulu



Chuckles



Nanny Shine

Who`s this?

- ▶ This is Nanny Shine



Hello! I`m Larry!
Nice to see you!

2

Hello! I`m Lulu!
How are you?
Welcome to our
school!



Who`s this?

- ▶ This is Larry



Who`s this?

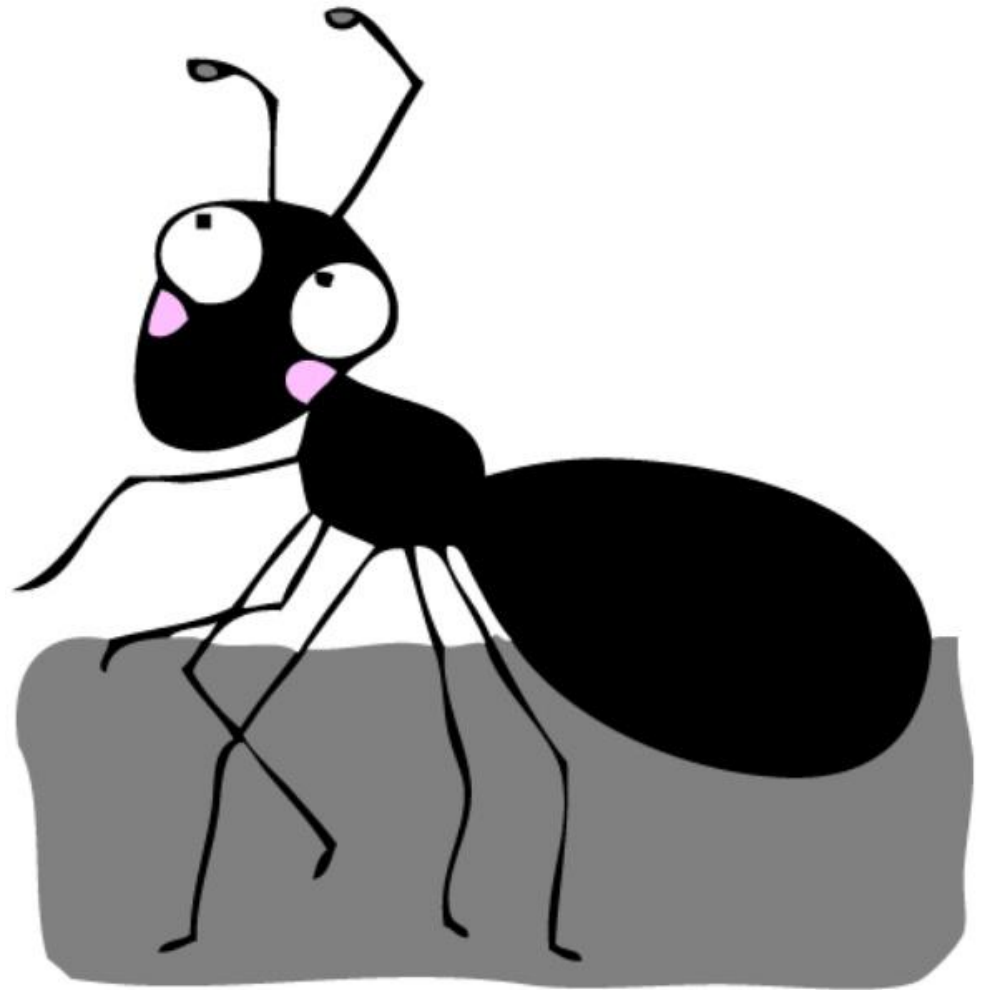
- ▶ This is Chuckles





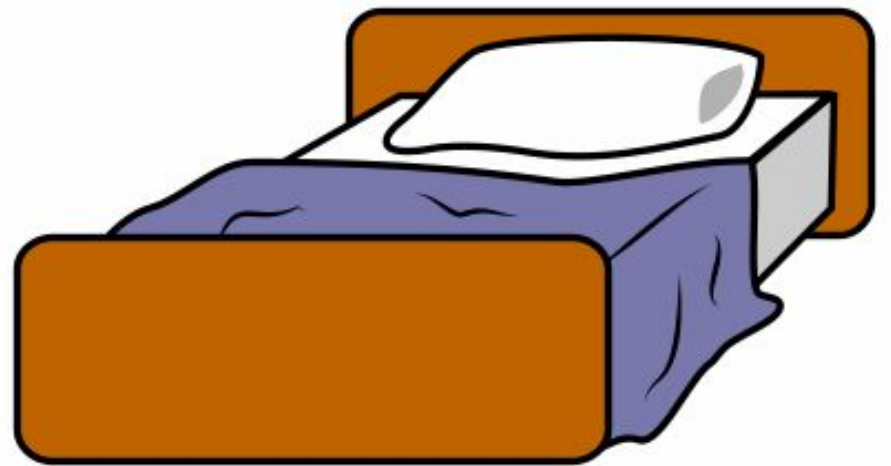
ant

Aa



bed

Bb



cat

Cc



dog

Dd



egg

Ee



flag

Ff



glass

Gg



horse

Hh



ink

I

•



jug

Jj



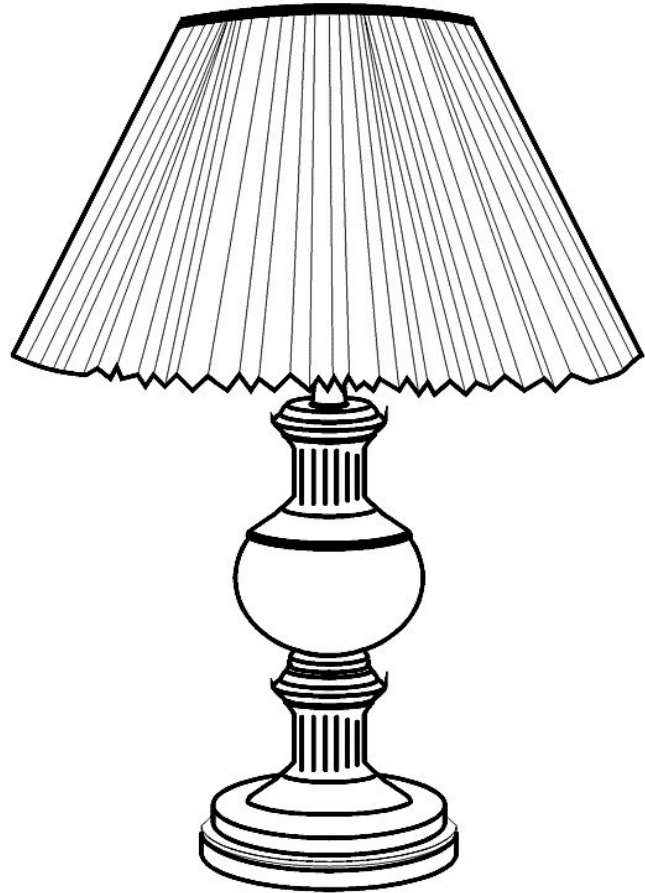
kangaroo

Kk



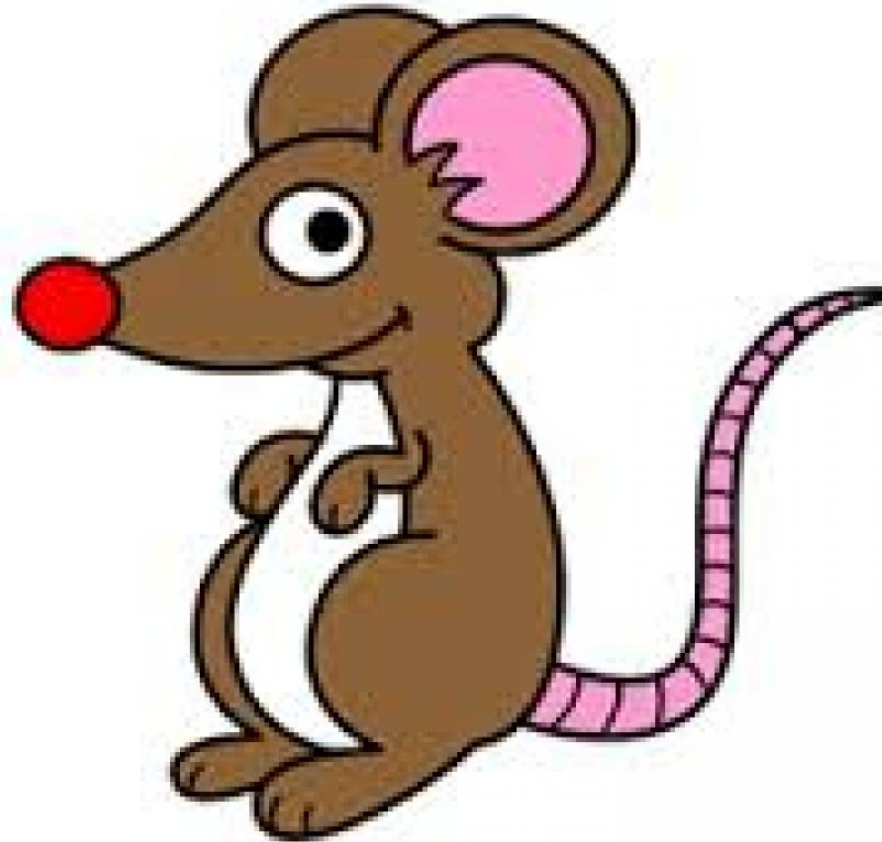
lamp

L1



mouse

Mm



nest

Nn



orange

O o



pin

Pp



queen

Q q



rabbit

Rr



snake

Ss



tree

Tt



umbrella

U u



vest

Vv



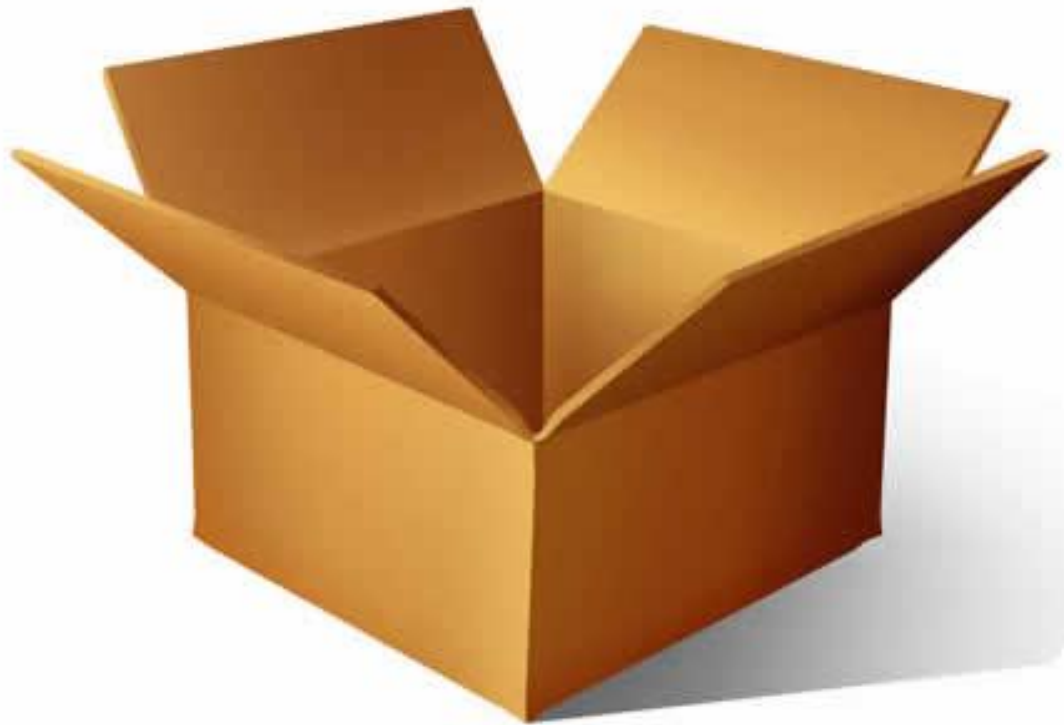
window

Ww



box

Xx



yacht

Yy



zip

Zz



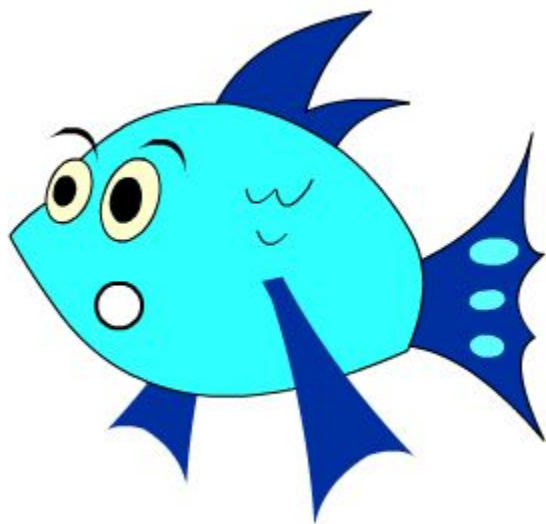
ZIP

sh

sheep



fish



ship

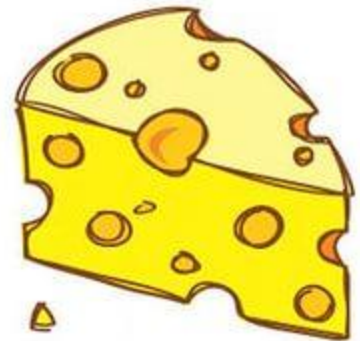


ch

chick



cheese



th

thumb



thimble

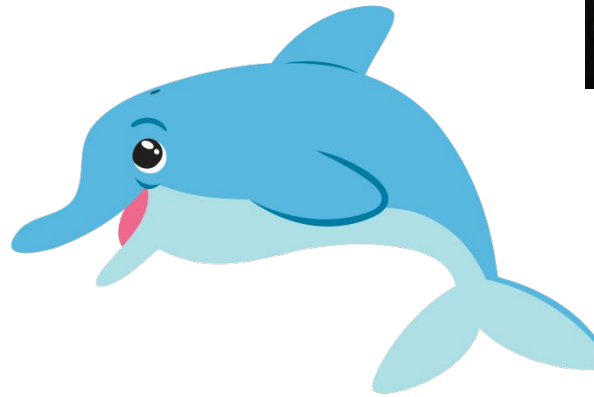


ph

Photo



Dolphin



elephant



Goodbye!

