

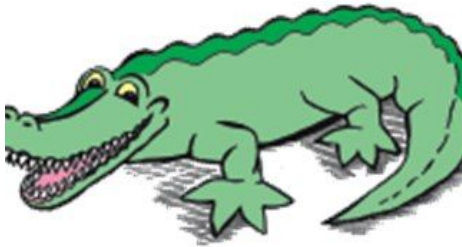
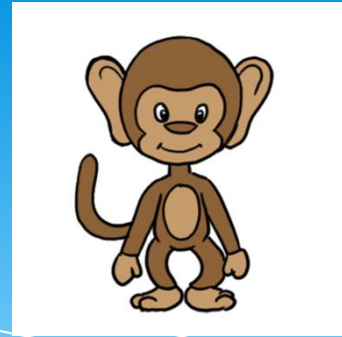
**Повелительное наклонение.
Вежливые просьбы
Животные**



ENGLISH ALPHABET

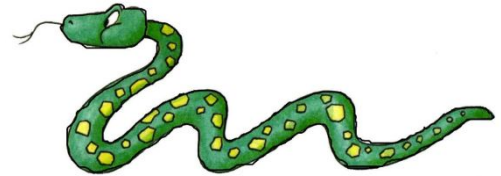


[w]-[w]-[w]



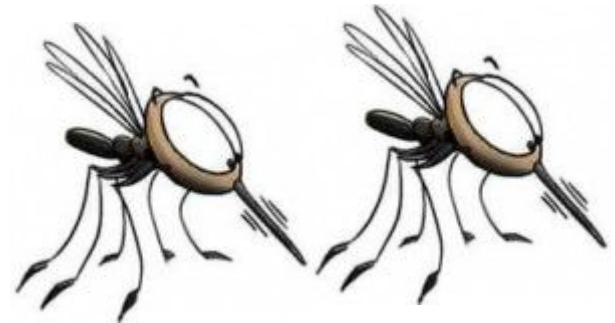
[ei]-[ei]-[ei]

[θ]-[θ]-[θ]

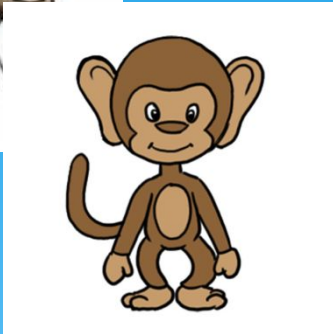
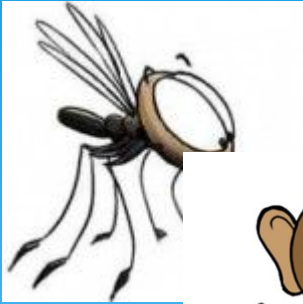


[ð]-[ð]-[ð]

[z]-[z]-[z].



[ai] - [ai] - [ai]



[t] - [t] - [t]

[d] - [d] - [d]

[n] - [n] - [n]



[l] - [l] - [l]



[l] - [l] - [l]

[h] - [h] - [h]

[f] - [f] - [f]

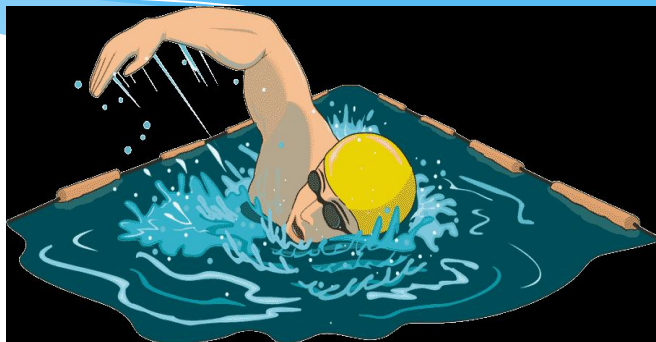
Сейчас она пойдет домой, задует свечку и ляжет спать. Как обезьянка задует свечку?

[h]

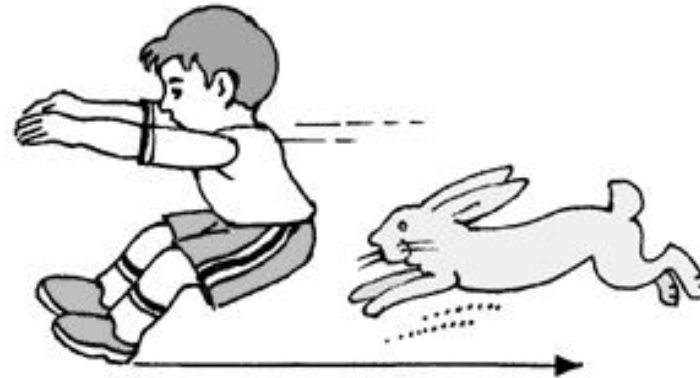


Повелительные предложения – это просьба или приказ

Swim! – Плыви!



Jump! - Прыгай!



Run! – Беги!



Let`s...

Let`s go !

* Давайте пойдём!

Let`s swim!

* Давай поплаваем!

Let`s jump!

* Давай попрыгаем!

Let`s run!

* Давай побегаем!



Если запрещают что-то делать, то
приказания начинаются с **Don't...**

* **Don't run!**

Не бегай!

* **Don't jump!**

Не прыгай!

* **Don't look!**

Не смотри!

* **Don't play!**

Не играй!



Чтобы сделать просьбу более вежливой, добавляем слово **please** .
Help me, **please!** - Помоги мне,
пожалуйста!



Animals



TIGER



SQUIRREL



PANDA BEAR



LION



BEAR



ELEPHANT



ANT



HORSE



CAT



DOG



BUTTERFLY



FOX



SNAKE



FROG



SHEEP



ARMADILLO



SHARK



POLAR BEAR



RABBIT

I'm very, very big
I have four legs and two big ears.
My nose is long
I am an...



an elephant





I am big and black and red
I am as a big cat
I am a...



a tiger





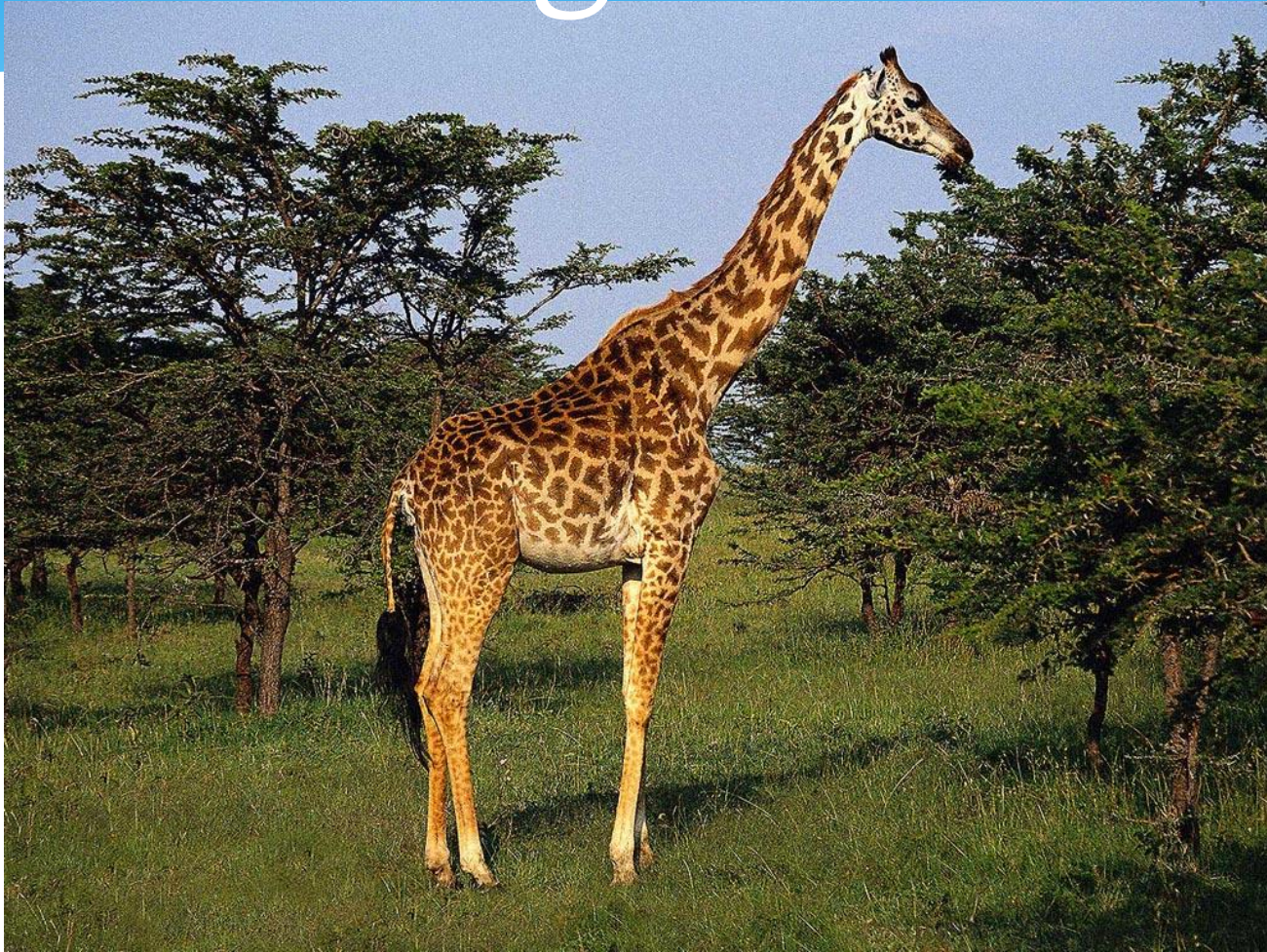
I am yellow and brown.

**I have long legs and a very long
neck.**

I like to eat green leaves.

I am a...

a giraffe





I am white in winter
I am grey in summer
I have long ears
I live in the forest
I am a ...



a hare



**Green and long
With many teeth.
Beautiful smile -
It's a...**



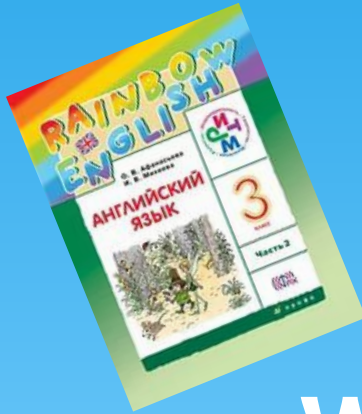
a crocodile





Home work

Textbook : **exercise 6 page 40**



Workbook :

exercise 4 page 104

