

WELCOME





# Political systems of the world



# Political aphorisms

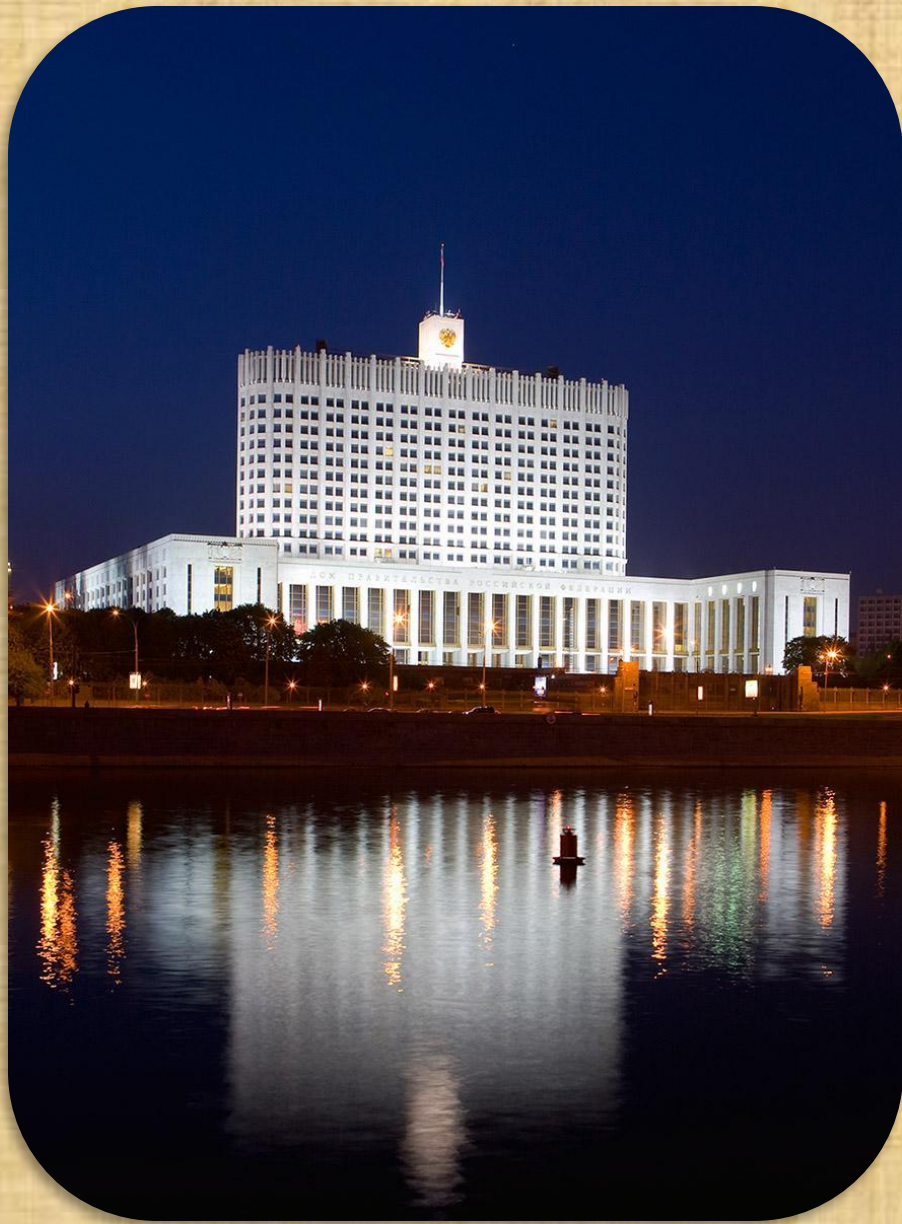
<p><b>«Every nation has the government that it deserves».</b> <b>(J. D. Maistre)</b></p>	<p><b>Искусство управления в честности.</b></p>
<p><b>«The best government is that which governs most».</b> <b>(J. O’Sullvans)</b></p>	<p><b>Каждая нация имеет правительство, которое заслуживает.</b></p>
<p><b>«The whole art of government is consists in honest».</b> <b>(T. Jefferson)</b></p>	<p><b>Лучшее правительство то, которое управляет больше</b></p>



The parts of the political system	The U.K.	The USA	The Russian Federation
Head of state			
Executive Branch			
Parts of the Executive Branch			
Legislative Branch			
Parts of the Legislative Branch			



The parts of the political system	The U.K.	The USA	The Russian Federation
Head of state	The Monarch	The President	The President
Executive Branch	The government	The President and the Cabinet	The Federal Government
Parts of the Executive Branch	The Cabinet; Non-Cabinet	The Cabinet	The Cabinet of Ministers
Legislative Branch	Parliament	Congress	The Federal Assembly
Parts of the Legislative Branch	The House of Commons; the House of Lords	The house of Representatives; the Senate	The Federation Council; the Duma





# True or false

- 1. New Zealand is a colony of Great Britain.
- 2. The British monarch is the head of state in New Zealand.
- 3. The monarch's representative is elected by the people.
- 4-. The Parliament represents the legislative branch.
- 5. The Parliament has two houses. ministers.
- 6. The Prime Minister is appointed by the Parliament
- 7. The Prime Minister appoints ministers.
- 8. The Executive Council and the Cabinet represent the executive branch.
- 9. The Constitutional Act was adopted in 1986.



# WHAT DO YOU THINK 'DEMOCRACY' MEANS?

- • People do what they want.
- • People rule the country.
- • People do what they want within the framework of law
- • People elect their representatives to rule the country.
- • People elect the head of state directly.
- • People say what they think.
- • People can live in any place they choose.
- • The head of state guarantees the rights of citizens.
- • All people and authorities follow the constitution.





WHICH TRAILS ARE POSITIVE AND WHICH ARE NEGATIVE  
FOR A POLITICIAN IN YOUR OPINION?

Sociable, ambitious, popular, patient,  
honest, bossy, power-loving,  
strong-willed, skilful, gifted, conservative,  
hypocritical, ruthless, disciplined,  
tolerant, cunning, patriotic, hard-working.

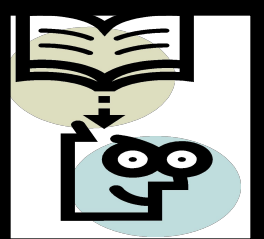
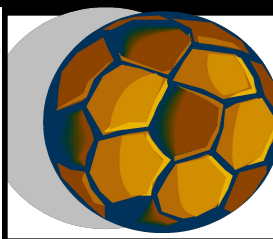


# The Republic of boys and girls

The head of state

The legislative branch

The executive branch



The people



# The Republic of boys and girls

The President

The President Council

The Departments

of  
finance

of law  
and  
order

of  
culture

of press

of  
physical  
culture

of  
learning

Classes



# MATCH DEPARTMENTS WITH THEIR FUNCTIONS. USE MODAL VERB “SHALL”

**The Department of Finance**

**The Department of Law and Order**

**The Department of Culture**

**The Department of Press**

**The Department of Physical Culture**

**The Department of Learning**

Organizes cultural events

Control the circulation of money

Coordinates sporting events

Provides oversight in the labor sector

Publishes the school's newspaper

Attends to students education

WHAT EMOTIONS  
DO YOU FEEL  
ABOUT THIS  
LESSON?

