

OUR FRAGILE PLANET, CAN IT BE SAVED?



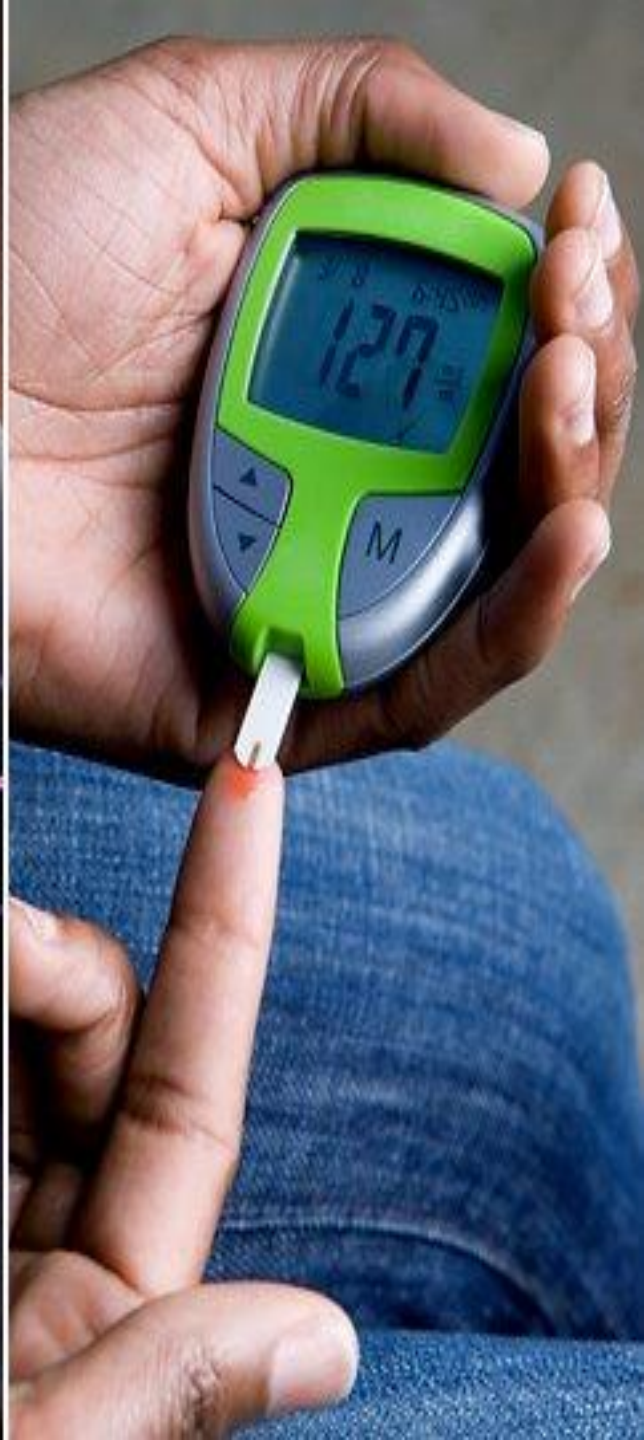
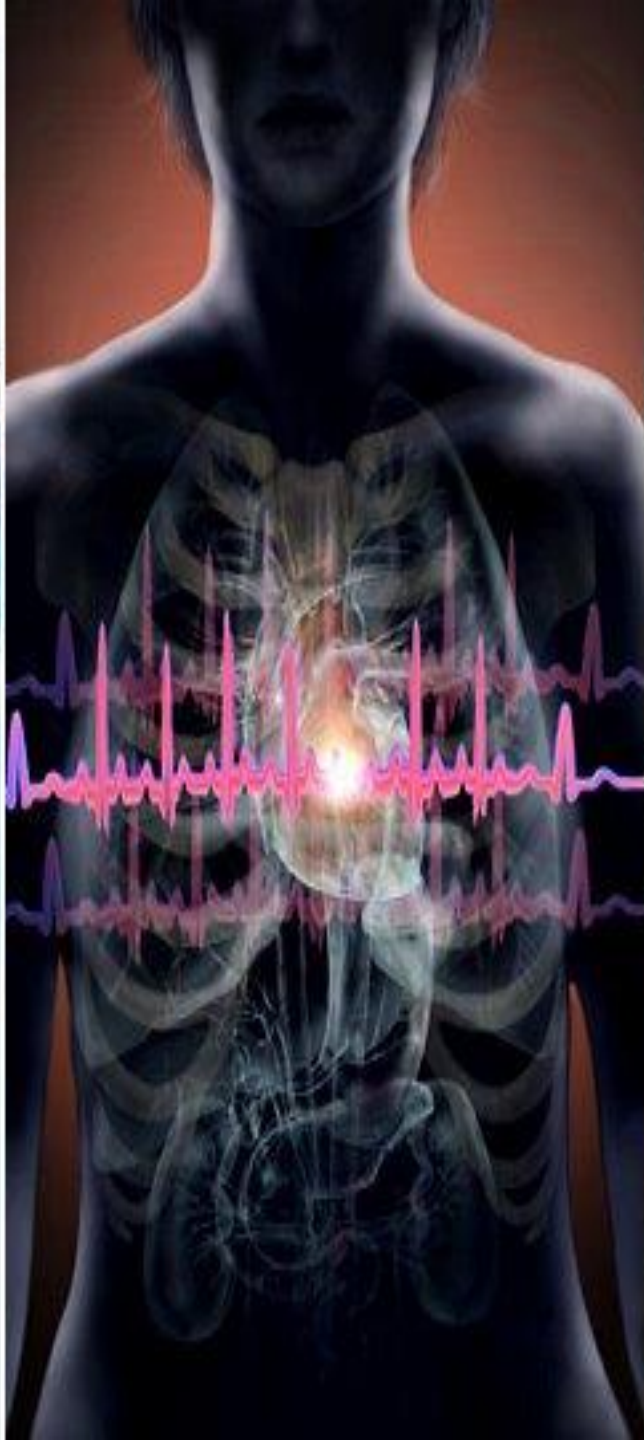
A pair of hands, one larger and one smaller, are shown cupping a small, realistic globe of the Earth. The hands are positioned as if they are carefully holding or presenting the planet. The background is dark, making the hands and the globe stand out. The globe shows blue oceans, white clouds, and green landmasses.

We do not inherit the earth from our ancestors,
we borrow it from our children.

Native American Proverb

A tall, dark industrial smokestack stands on the left side of the frame, emitting a thick, billowing plume of smoke that stretches across the top of the image. The sky is a mix of clear blue and bright, hazy yellow-orange, suggesting a sunset or sunrise. The overall scene conveys a sense of industrial activity and environmental impact.

AIR POLLUTION











WATER POLLUTION













UBC BOSTON

CIMASSOL





LAND POLLUTION

POLLUTION ON THE LAND





















