

Walt Disney's world!



Q

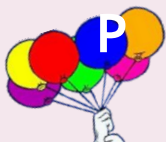
E

M



R

L



P

H

d



K

~

l

C

v

N

X

F

g

J



o

t

S



u

w

b



y

K

~

l

C

v

N

X

F

g

J

THE *OF*
DECEMBER IN 1901 IN
CHICAGO.





WALT DISNEY LIKED TO DRAW VERY MUCH



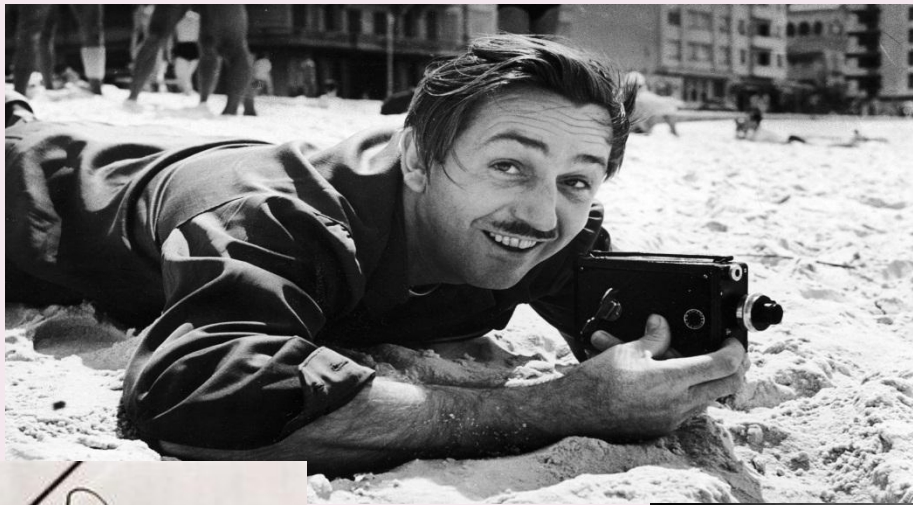
CALIFORNIA INSTITUTE OF THE ARTS (CAL ARTS)



DISNEY'S FAMILY









“We don’t make movies to make money.
We make money to make more movies.”

~ Walt Disney

WALT ELIAS DISNEY DIED ON THE 15TH OF DECEMBER 1966



Walt Disney



Уолт Дисней,
создатель Микки Мауса,
боялся мышей

Disney has created a lot of cartoons and films.

His name is famous all over the world.

December 5, 1901 – December 15, 1966

o

t

s

u

w

b

y

j

q

e

r

m

l

p

h

k

~

l

c

v

n

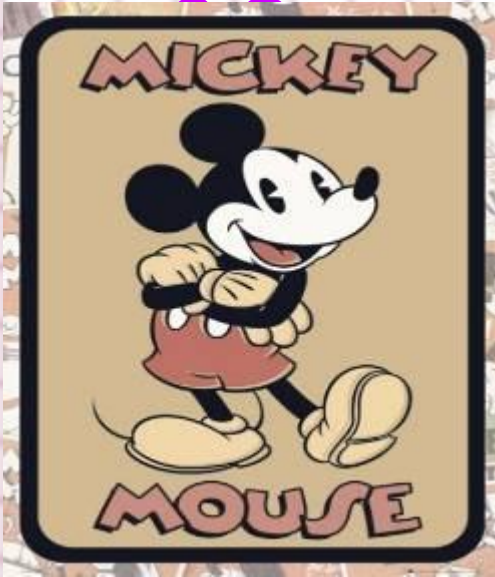
x

f

11

g

Mickey



Mickey Mouse is a funny animal cartoon character created in 1928 by Walt Disney. Mickey is a mouse who wears red shorts, large yellow shoes, and white gloves.

He is very funny and friendly.

E Q M R L P H d

o t S u w b y

Minnie Mouse



Minnie Mouse is Mickey's girlfriend.

She is very nice, kind and fun-loving.

Minnie likes shopping, gardening, music and fashion.

other characters...



Donald Duck



Pluto



Dumbo



Goofy



Winnie-the-Pooh



Chip and Dale

...and many, many more!

o

t S

u

w

b

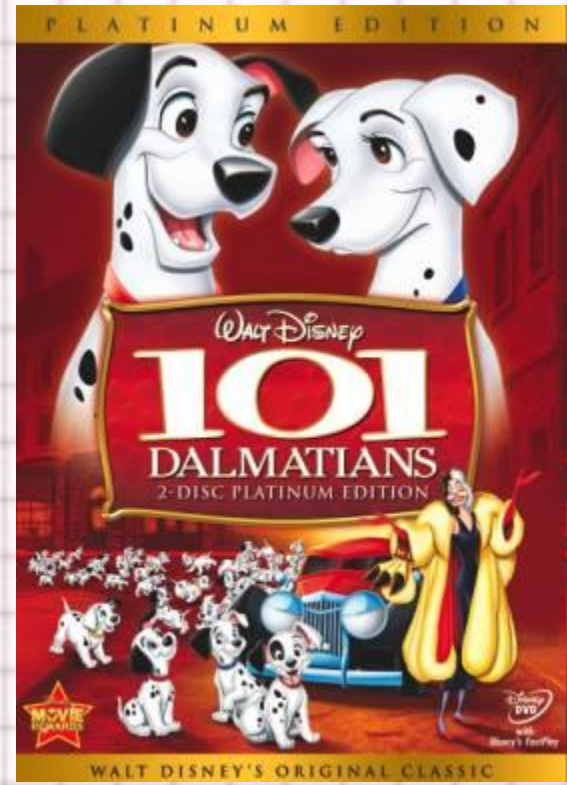
Q
E M

R L
P H

d

K ~ l C V N X F 14 g J

Disney's stories end happily. All his films and cartoons are easy to watch. The audience always feels comfortable and enjoys his cartoons very much.

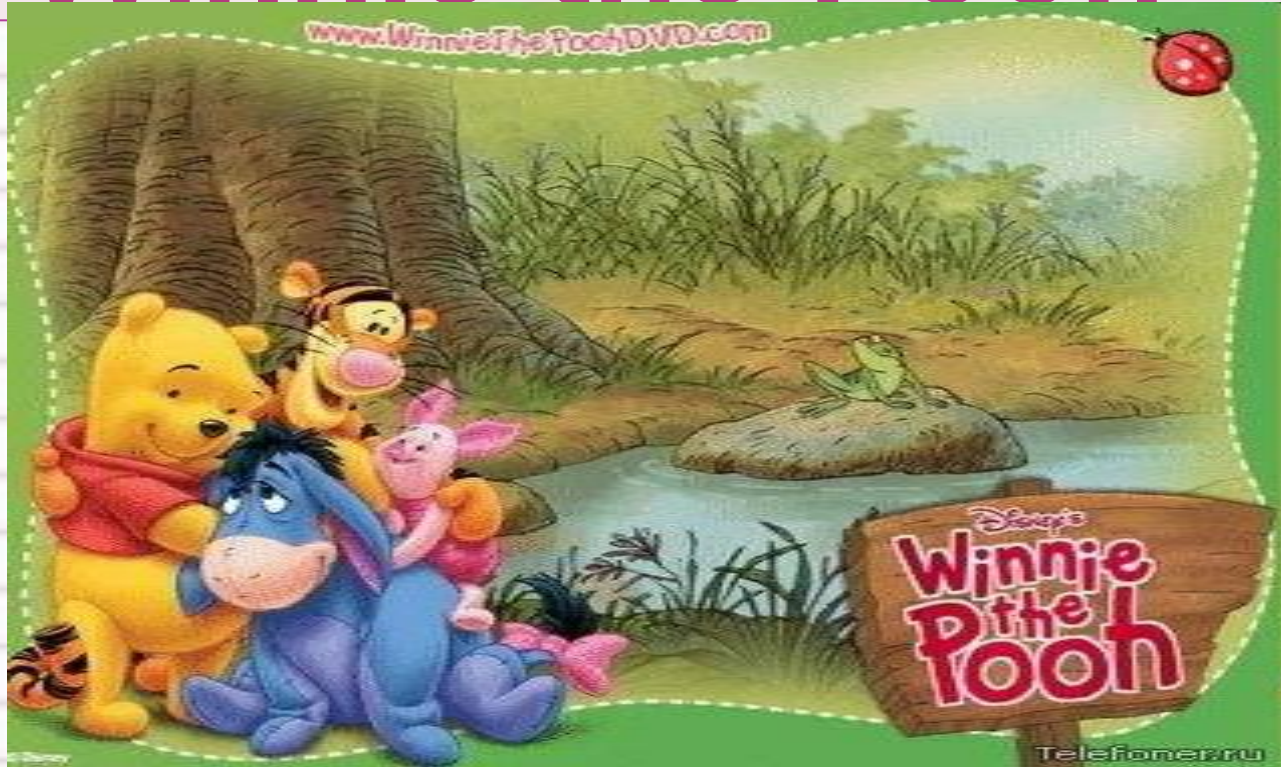


Q
E
R
P
H
d

O
t
S
u
w
b
Y

K ~ l C V N X F 15 g J

Winnie-the-Pooh



Disney's daughters were also big fans of the wonderful Pooh-books. A. A. Milne (author of the book), a fan of Disney's work, would be honored if Disney ever wanted to animate his Pooh stories.

Characters of this cartoon are funny, kind and nice! They are very good friends.

Disney's princesses



Snow White

o

t

s

u

w

b

y

Q
E M

R L

P
H

d

K ~ l C V N X F 17 g J

Disney's princesses



Ariel

o

t s

u

w

b

Y

Q

E

M

R

L

P

H

d

Disney's princesses



Cinderella

Q
E
R
P
H
d

o
t
s
u
w
b
Y

Disney's princesses



Rapunzel

Q
E
R
P
d
M
L
H
t
s
u
b
w
Y
K
~
l
c
v
N
X
F
20
g
J
o

Disney's princesses



Jasmine

o

t s

u w

b

Y

Q

E

M

R

L

P

H

d

K

z

l

C

v

N

X

F

21

g

J

Disney's princesses



Pocahontas

o

t s

u w

b

Y

Q

M

L

P

H

K

~

l

C

v

N

X

F

22

g

J

E

R

d

Disney's princesses



They are beautiful, charming and always kind.

All girls all over the world like them and dream to be a princess.



Disneyland.



One day an idea came to Disney. He wanted to create a special place for children and their parents. So he built **DISNEYLAND**.

DISNEYLAND



Disneyland



At Disneyland you can have a voyage on a boat, you can take a train, you can travel to the stars, take a trip to the mountains, meet all Disney characters.

o

t S

u

w

b

Y

Q
E M

R L

P
H

d

WALT DISNEY.

1) The full name of Disney is ...

- a) Walt Disney b) Walter Chris Disney c) Walter Elias Disney

2) He was born in ...

- a) 1901 b) 1900 c) 1910

3) Disney was born in ...

- a) New York b) Hollywood c) Chicago

4) The first character of Disney's cartoons was ...

- a) Mickey Mouse b) Oswald Rabbit c) Donald Duck

5) How old is Mickey Mouse?

- a) 100 b) 200 c) 83

6) The name of the first feature cartoon film is "Snow White and ..."

- a) The Seven Dwarfs b) The Beast c) Three Little Pigs

7) Disney's little elephant who can fly is ...

- a) Goofy b) Dumbo c) Simba

8) The first Disney's character who could speak was ...

- a) Pluto b) Minnie Mouse c) Mickey Mouse

9) The first Disney Land Park was opened in ...

- a) California b) Washington c) Texas

10) Today there is no Disney Land Parks in ...

- a) France b) Japan c) Great Britain

DISNEY CHARACTERS

- ◉ Which Disney character is known for his uneven socks?
- ◉ Which of Disney's characters follows a talking rabbit down a hole and into a fantasy world where everything seems to be ruled by a sense of the illogical?
- ◉ Which character was raised by a family of wolves and lived in the jungle?
- ◉ What is the name of the princess who fell asleep on her 16th birthday?

MICKEY MOUSE QUESTIONS

- When is Mickey Mouse's birthday?
- What is the name of the first Mickey Mouse cartoon?
 -
- Who was the original voice for Mickey Mouse?
- What was the first cartoon character to have a star on the Hollywood Walk of Fame?

QUESTIONS ABOUT ANIMALS

- ◉ Which of Disney characters says "Oh please, dear princess! Only a kiss from you can break this terrible spell that was inflicted on me by a wicked witch!"
- ◉ What is the cat's name in *Alice in Wonderland*?
- ◉ What colour is the Cheshire Cat?
- ◉ These animals were used as the croquet balls in *Wonderland*.

QUOTATIONS

- ◉ I'm late, I'm late for a very important date, no time to say hello, goodbye. I'm late, I'm late.
- ◉ Umm, guys...Olympus would be that way...
- ◉ What kind of animal are you?
- ◉ Magic mirror on the wall, who is the fairest one of all?

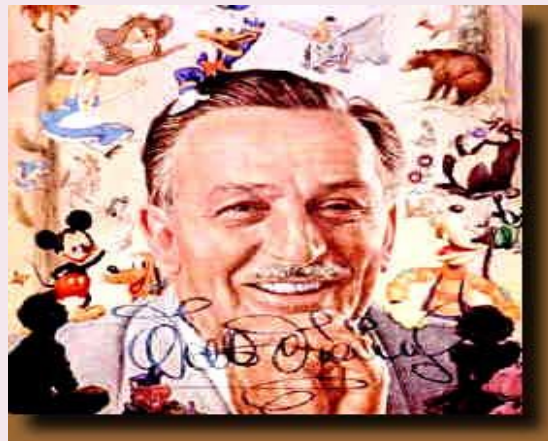




***"If you can dream it,
you can do it."***

Walt Disney





Walt Disney is a legend; a folk hero of the 20th century. His worldwide popularity was based upon the ideals which his name represents: imagination, optimism, creation, and self-made success in the American tradition. He brought us closer to the future, while telling us of the past, it is certain, that there will never be such as great a man, as Walt Disney.



Thanks!

E

Q

M

R

L

P

H

d

K

~

l

C

v

N

X

F

37

g

J

t

S

u

w

b

o