

Walt Disney



Walter Elias "Walt" Disney

Born: 5 December 1901

Birthplace: Chicago, Illinois

Died: 15 December 1966 (lung cancer)

Best Known As: The creator of Mickey Mouse
and Disneyland



Walt Disney then established his own studio, producing animated cartoons. His most famous character was Mickey Mouse, who was first seen in Plane Crazy and Steamboat Willy (1928). Disney also provided the original voice for Mickey.



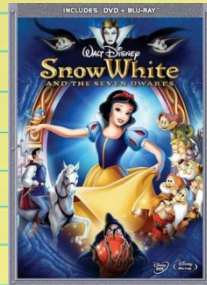


"The Lion King" (English The Lion King) — the 32nd classical animation film released by studio of Disney. "The Lion King" was shown for the first time on June 15, 1994 in several cities of the USA, and in a wide release the animated film left on June 24, 1994. The IMAX premiere of the processed version of "The Lion King" with the improved quality of the image and a sound also on December 25, 2002 took place. The repeated premiere of this animated film in a format 3D and IMAX 3D on March 22, 2012 took place.

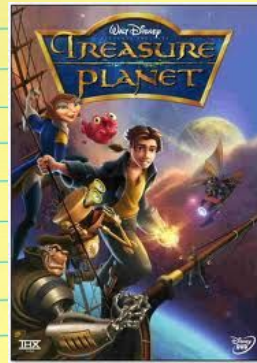
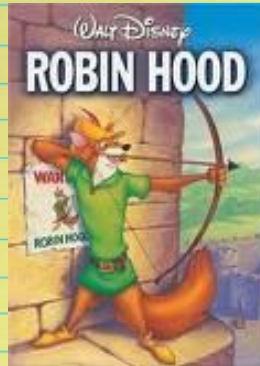
"Throne" (English Tron) — the American science-fiction film of 1982 shot at Walt Disney studio by director Stephen Lisberger. Leading roles executed Jeff Bridges, David Warner, Bruce Boksleytner and Cindi Morgan. The film received continuation in nearly thirty years, with the film which has left in 2010 the Throne: Heritage.



Disney's earliest full length cartoon movies were Snow White and The Seven Dwarfs, Pinnochio, Dumbo and Fantasia.



In the 1950s onwards he produced heroic colour tales like Robin Hood and Treasure Island; and in 1964 Disney made Mary Poppins.



Disney opened the first theme park, Disneyland in California in 1955. There are now others in Florida, Tokyo and near Paris.



Walt Disney is a legend; a folk hero of the 20th century. His worldwide popularity was based upon the ideals which his name represents: imagination, optimism, creation, and self-made success in the American tradition. He brought us closer to the future, while telling us of the past, it is certain, that there will never be such as great a man, as Walt Disney.





Smolyakov Vitaly
Form 9
Teacher: Kletkina
Irina Anatolyevna

Erik, 2013