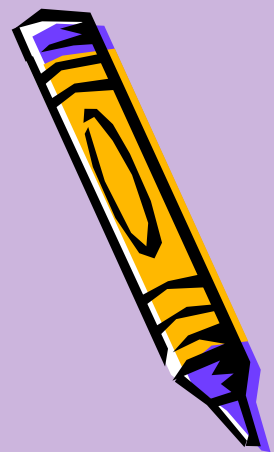


Мое первое путешествие по Лондону



Составила учитель английского языка Дзагоева З.Г.
МБОУ Школа-интернат г.Моздока

Great Britain



Географическое положение Великобритании



Герб.



Флаг.



Великобритания – это островное государство на северо-западе Европы.

Великобритания граничит с **Ирландской Республикой**. Других сухопутных границ у Великобритании нет, все остальные границы – морские.

Ближайшие соседние страны у Великобритании – это **Франция, Бельгия, Нидерланды, Германия, Дания и Норвегия**.



By train



By plane



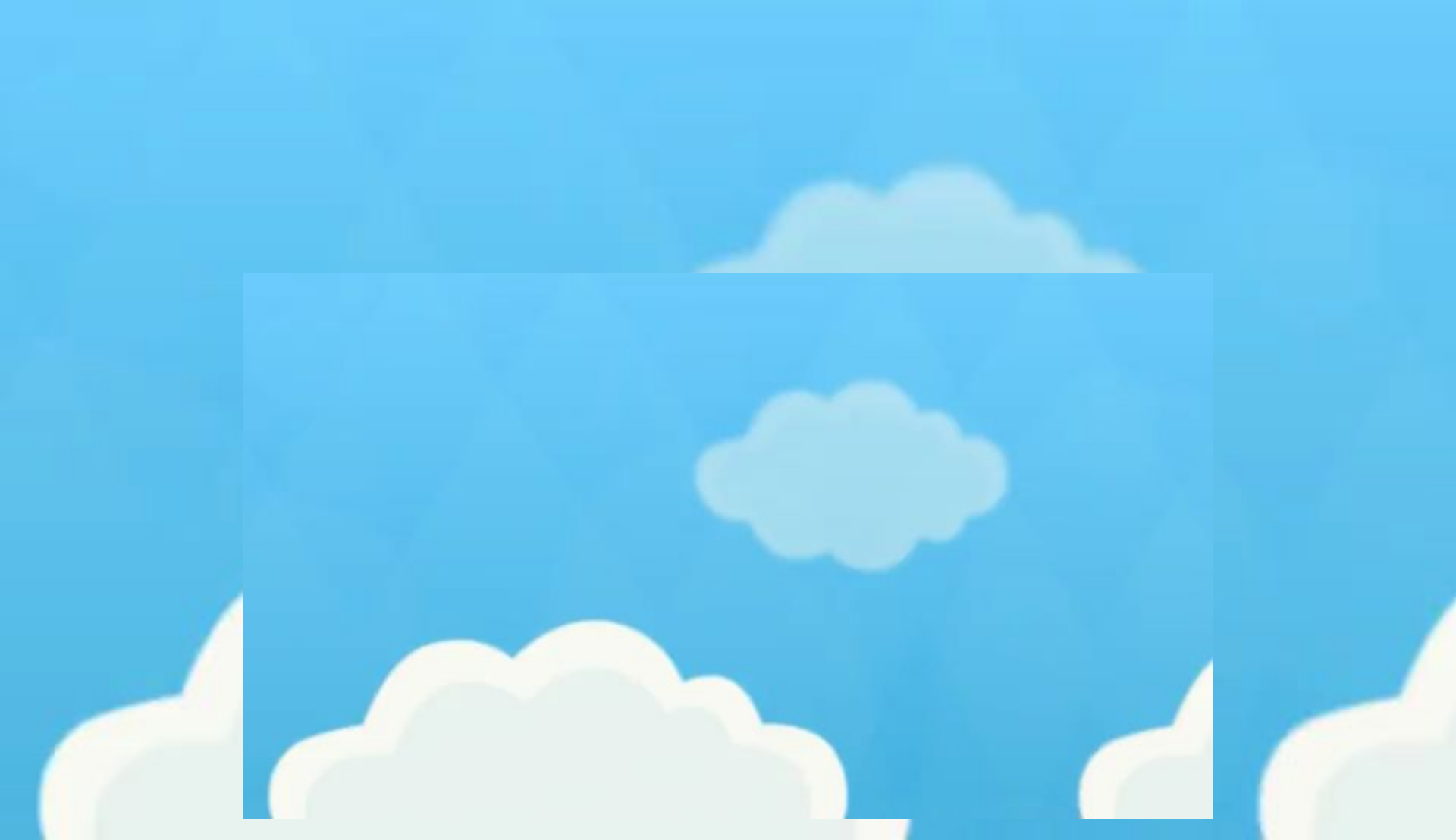
By car



By bus









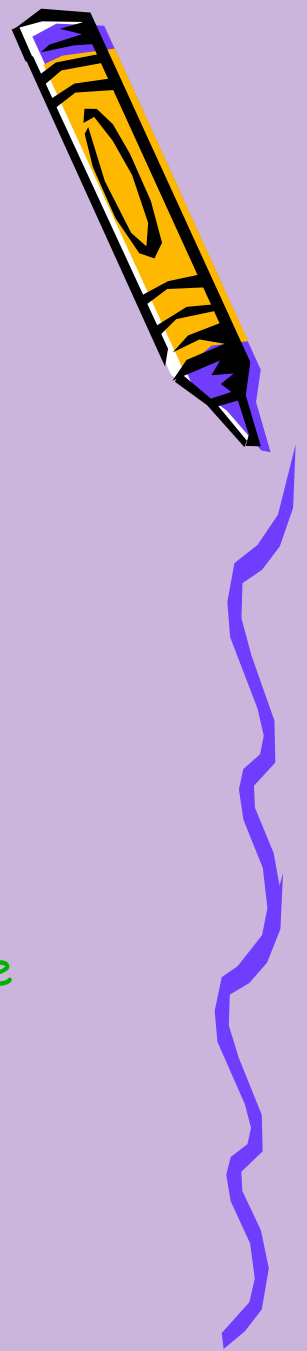
Welcome to London





Westminster Abbey

- Standing not far from the Houses of Parliament, Westminster Abbey is a symbol of England. The legend says that Westminster Abbey was founded by St Peter himself. We know that the coronation of Royal Family takes place here. Some famous English people are also buried here, for example Charles Darwin, Isaac Newton, R. Kipling. The funeral service for Diana, Princess of Wales took place in Westminster Abbey in September 1997.

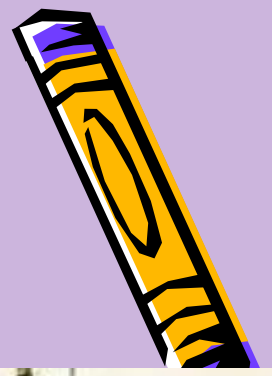




The Houses of Parliament



The TOWER of London



Welcome to the Tower of London!

The Tower has 900 years history. It has been many things: a fortress, a prison, a place of execution, a palace and even a zoo. Today the Tower is best known as a historical museum and more than 2 million people visit it each year. The Tower of London was started in 1066 by William the Conqueror. The oldest building of the Tower is the White Tower. The walls of the White Tower are 27 metres high and about 5 metres thick at the base.



• Ravens

There have always been ravens at the Tower. There is a legend that they bring good luck to Britain. The ravens are looked after by the official Ravenmaster, who feeds them and checks their health.



Бифитер



Trafalgar Square





Nelson's colomn on the Trafalgar Square





The city of London

is the financial centre of the UK

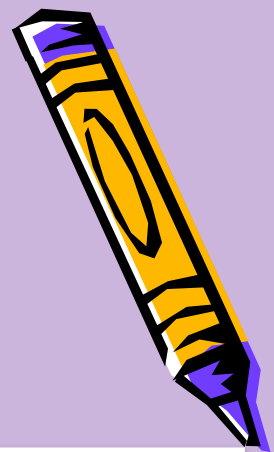




British Museum



Buckingham Palace is the official London residence of the British monarch. Located in the City of Westminster, the palace is a setting for state occasions and royal hospitality, and a major tourist attraction.



The Queen's real one
is on the 21st of April.



The Queen Victoria Memorial is in front of *Buckingham* *Palace*



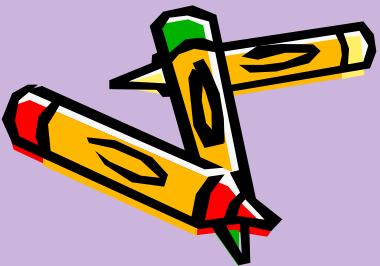
Buckingham Palace

is the residence of the Queen. When the Queen is in London, you can see the Union Jack above the palace





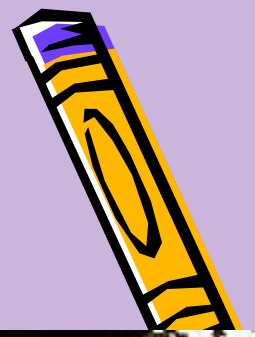
Every evening the **Ceremony of the Keys** takes place at the Tower. The Tower is closed and the keys are brought to the Queen



The London Eye or the Millennium Wheel is the tallest observation wheel of the world. It is 135 metres high. It was built to celebrate the start of a new millennium in 2000. Each capsule is made of glass.



THE PARKS OF LONDON

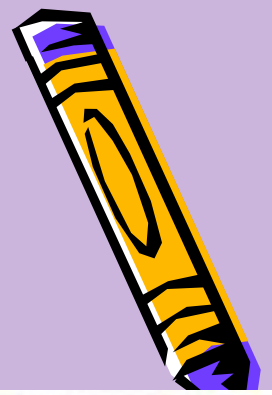


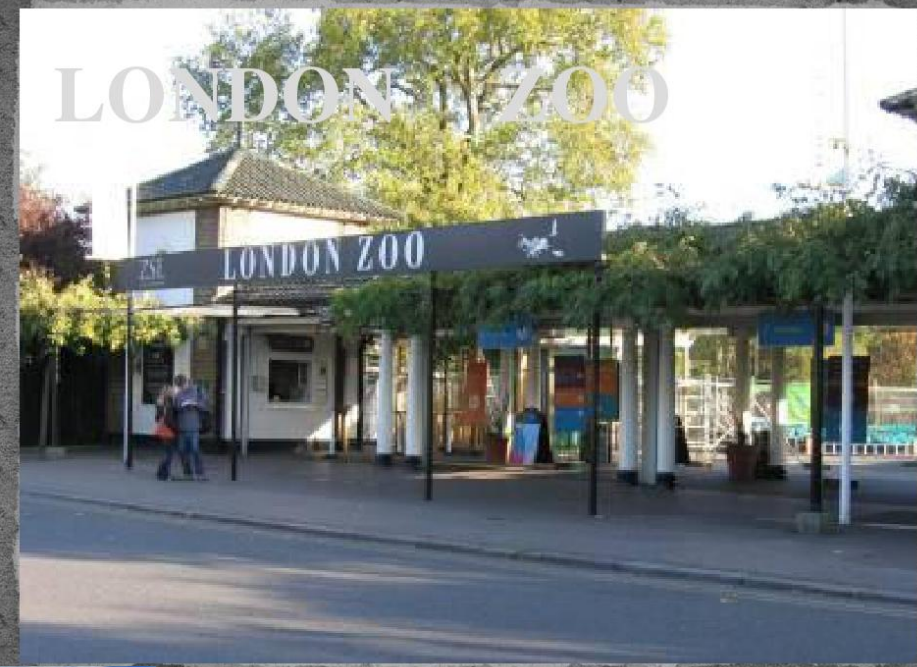
London is very rich in parks and gardens.
London's parks are full of trees, grass, flowers
and water.



In Hyde Park

You can walk among old trees, relax or take part in many activities such as horse - riding.







a
ca
t



a
fi
sh



a
w
ol
f



a
do
g



a
bi
rd



a
fr
og





a
bea
r



a
tig
er



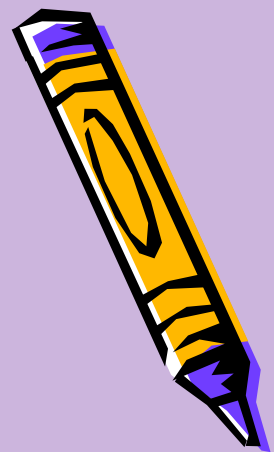
a
mon
key

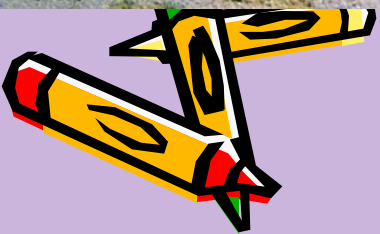


a
she
ep



a
hor
se





Tower Bridge

is one of London's most famous symbols. When it was opened in 1894 it was considered a wonder of the world. It attracts a lot of tourists.





Big Ben is the nickname for the great bell of the clock at the north-eastern end of the Palace of Westminster in London. The nickname is often also used to refer to the clock and the clock tower. This is the world's largest four-faced, chiming clock and the third largest free-standing clock tower in the world. It celebrates its **150th birthday in 2009**, during which celebratory events are planned.





Биг Бэн- это башня.
Поиграть мы здесь не
прочь:
в утро,
вечер,
день и ночь.



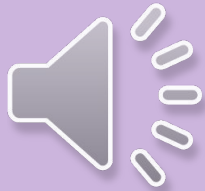


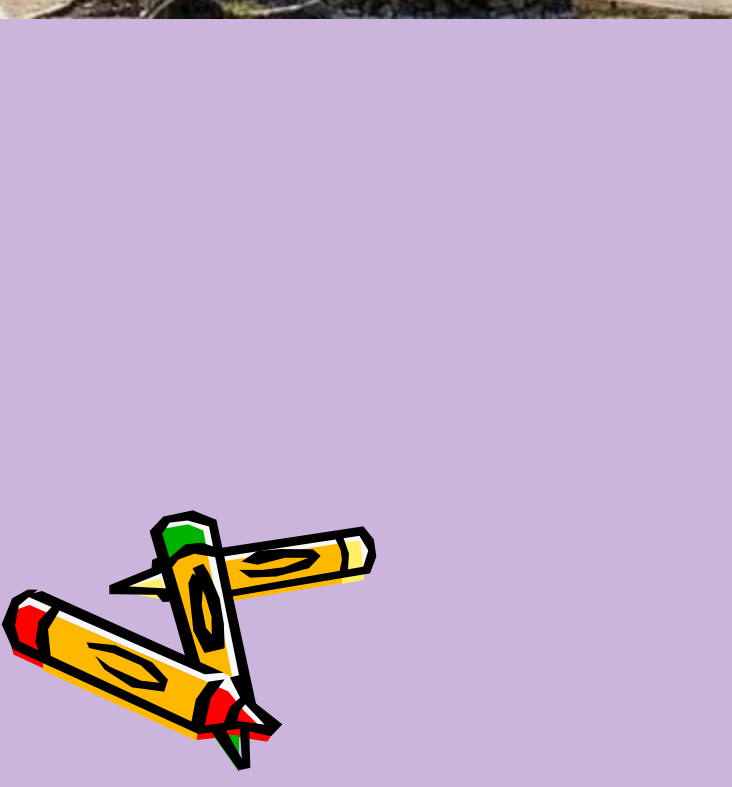
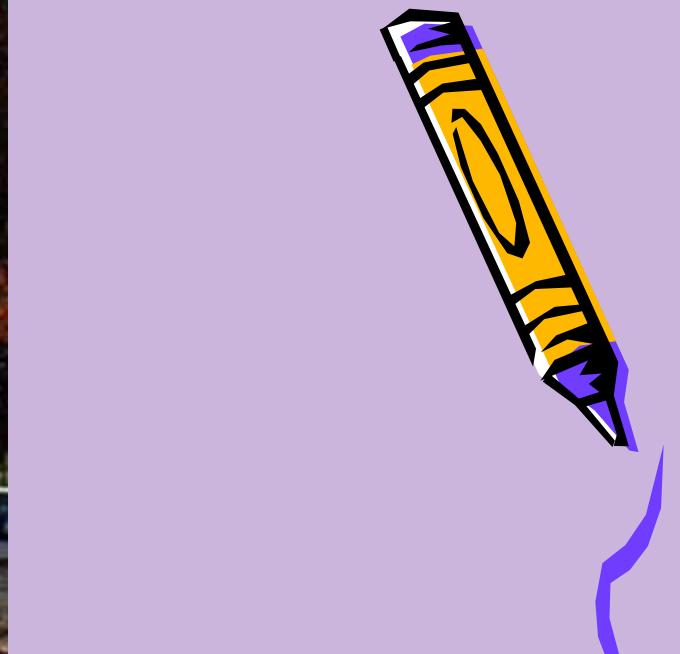
«Home, home, sweet home!»



- «Дом, дом,
- Милый дом!»







Good bye!

