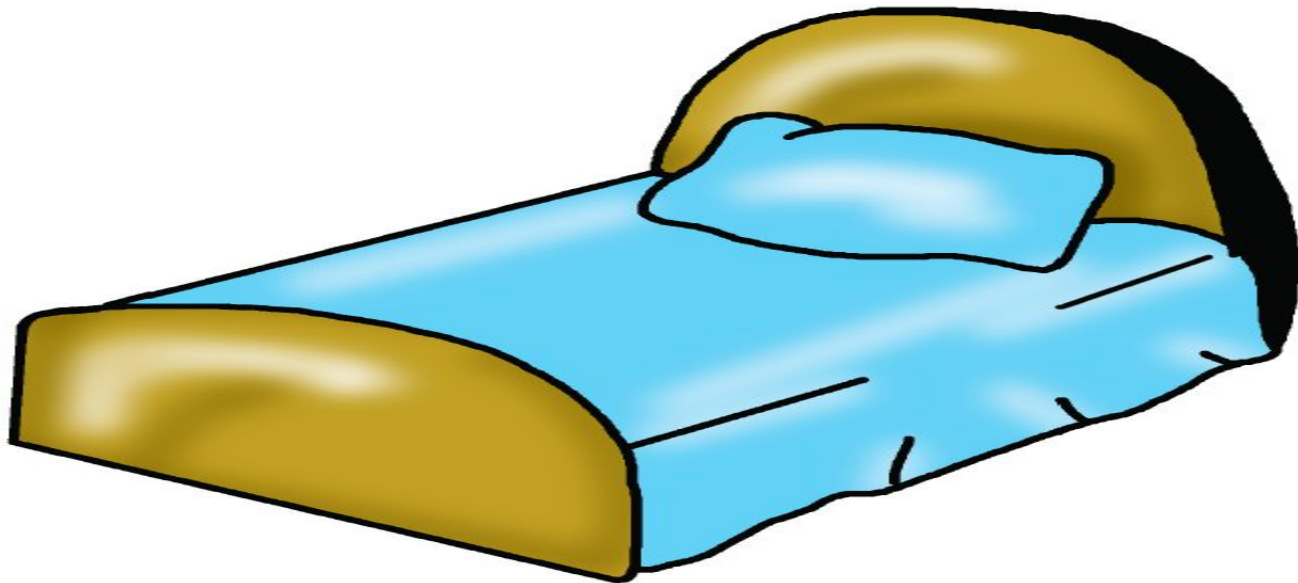
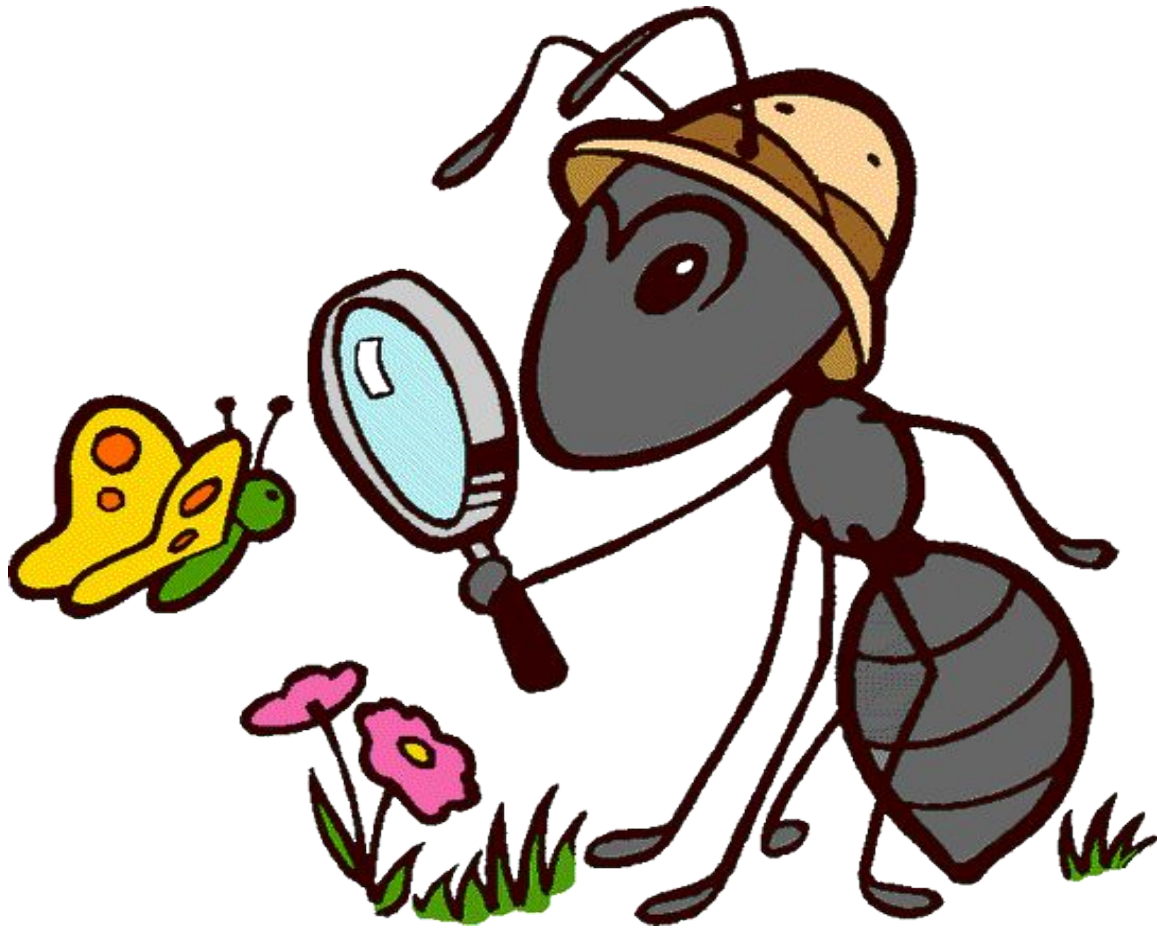


Bb-bed



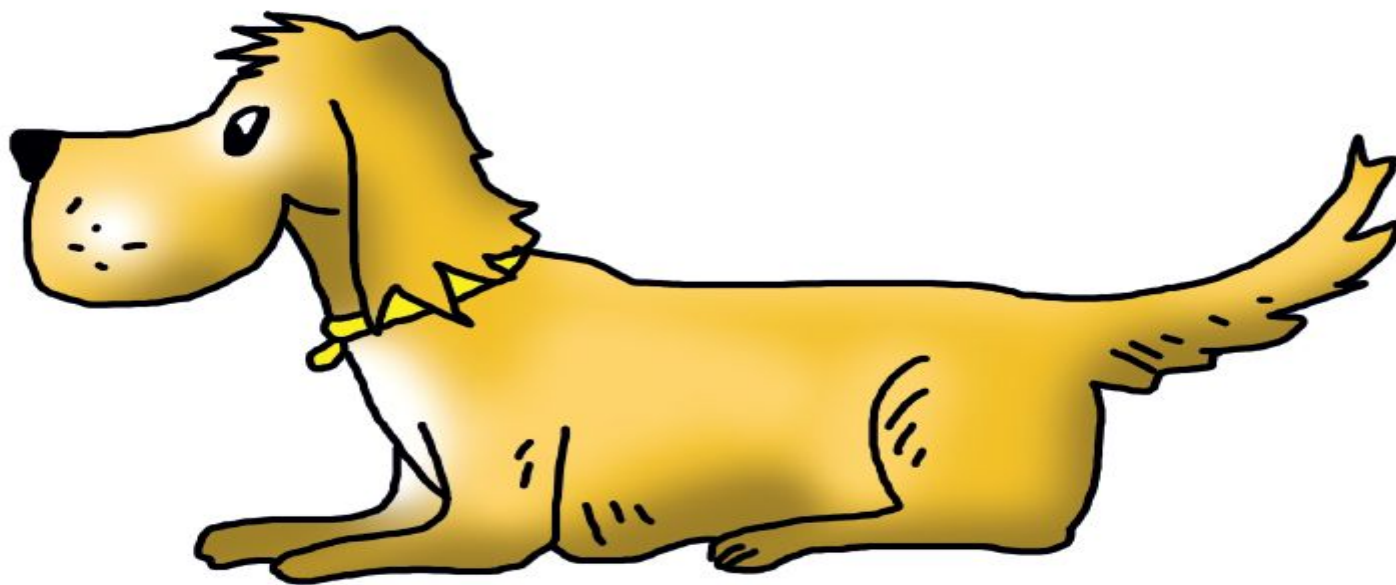
Aa-ant



Cc-cat



Dd-dog



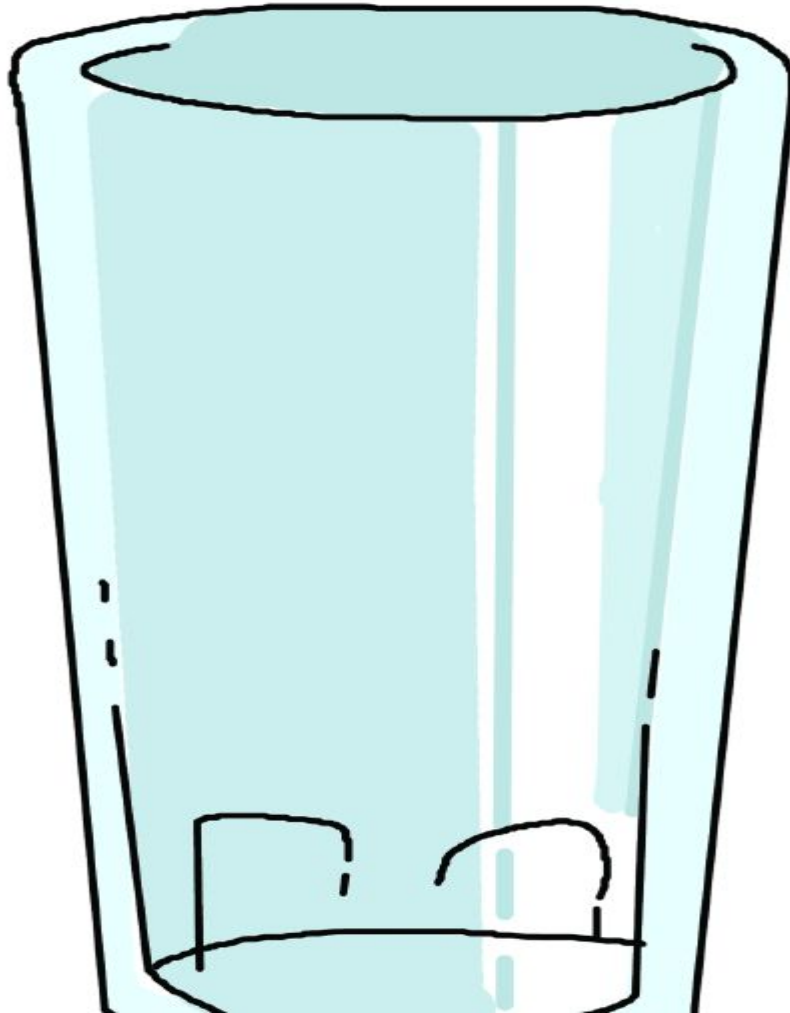
Ee-egg



Ff-flag



Gg-glass



Hh-horse



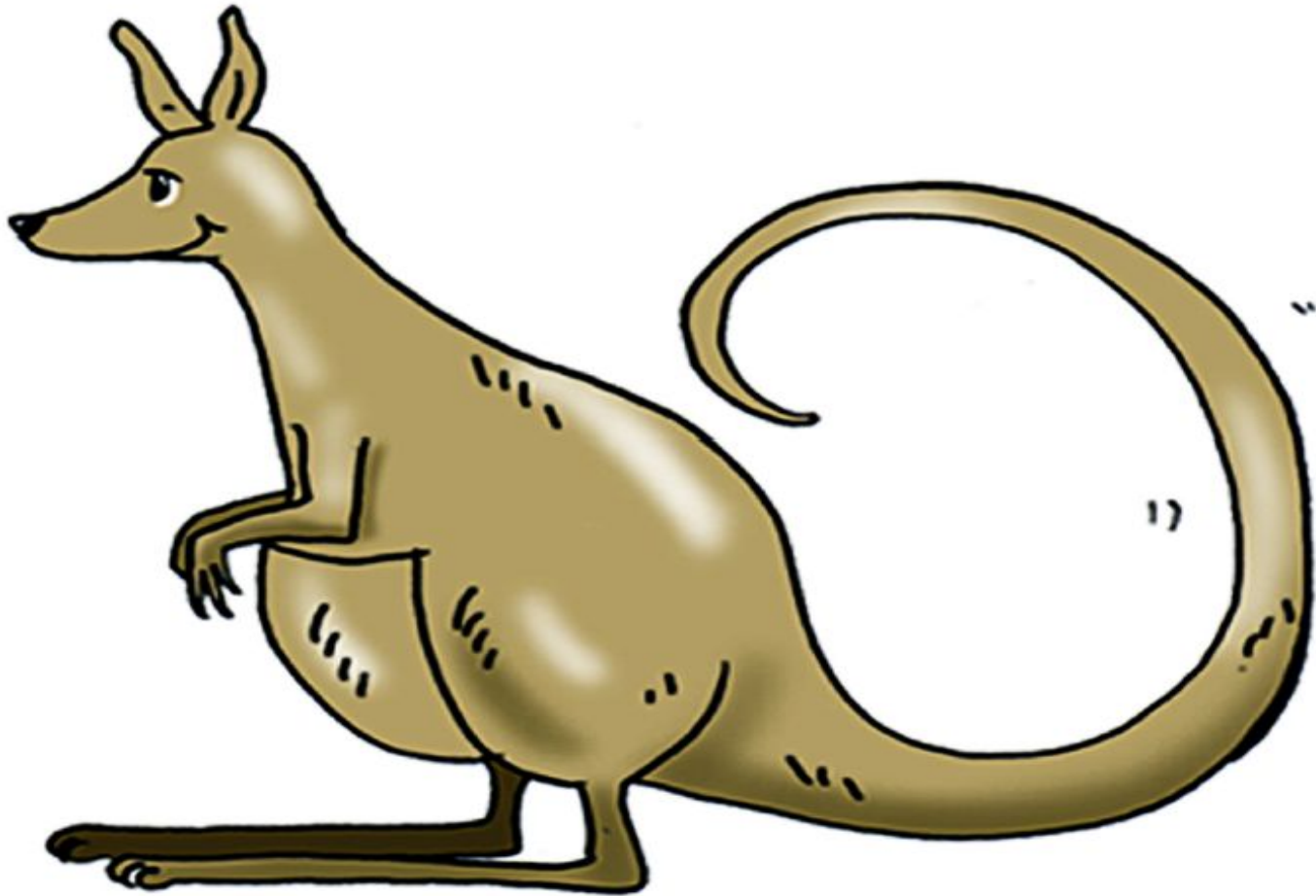
li-ink



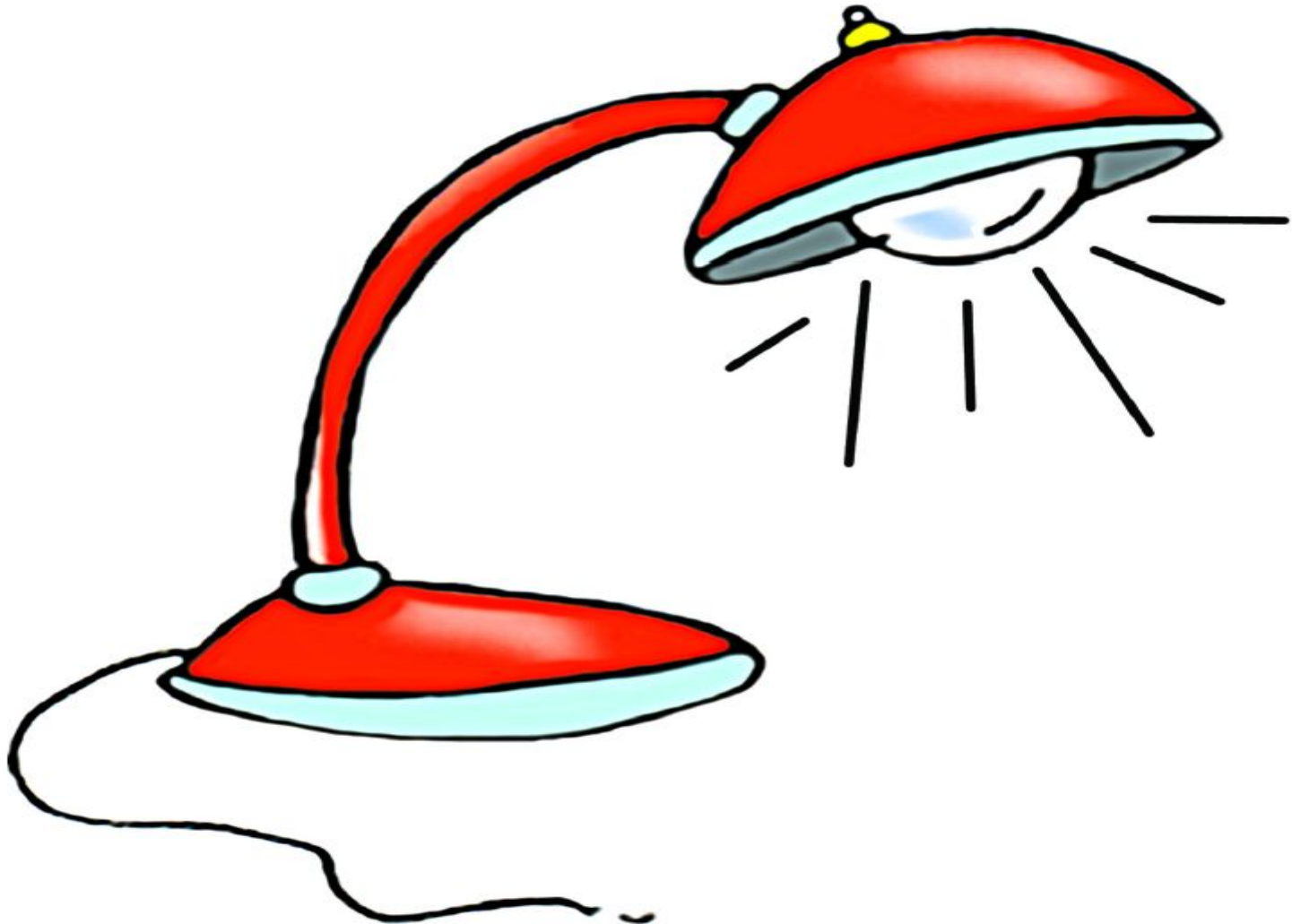
Jj-jug



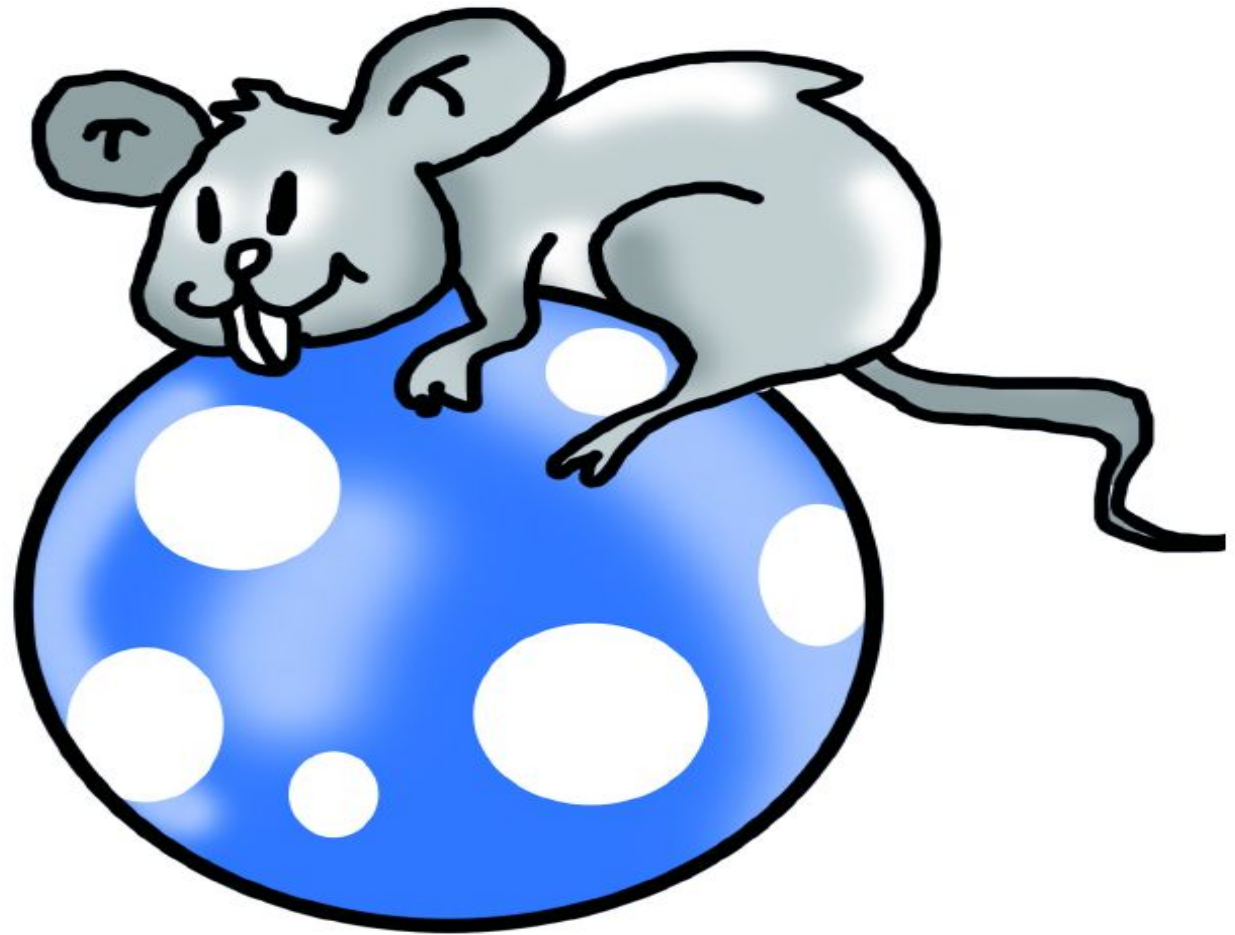
Kk-kangaroo



Li-lamp



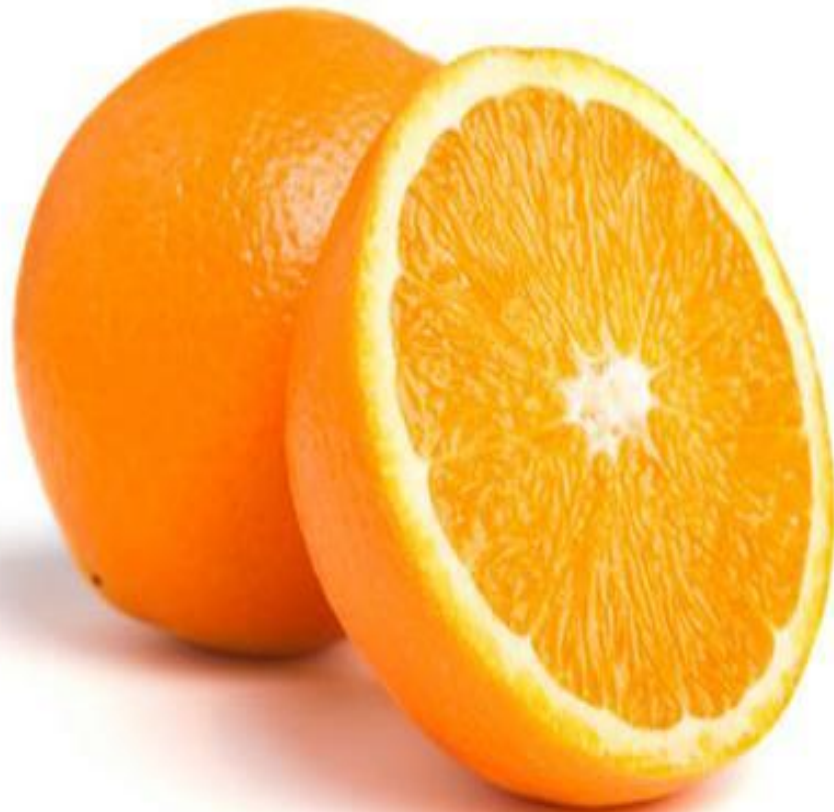
Mm-mouse



Nn-nest



Oo-orange



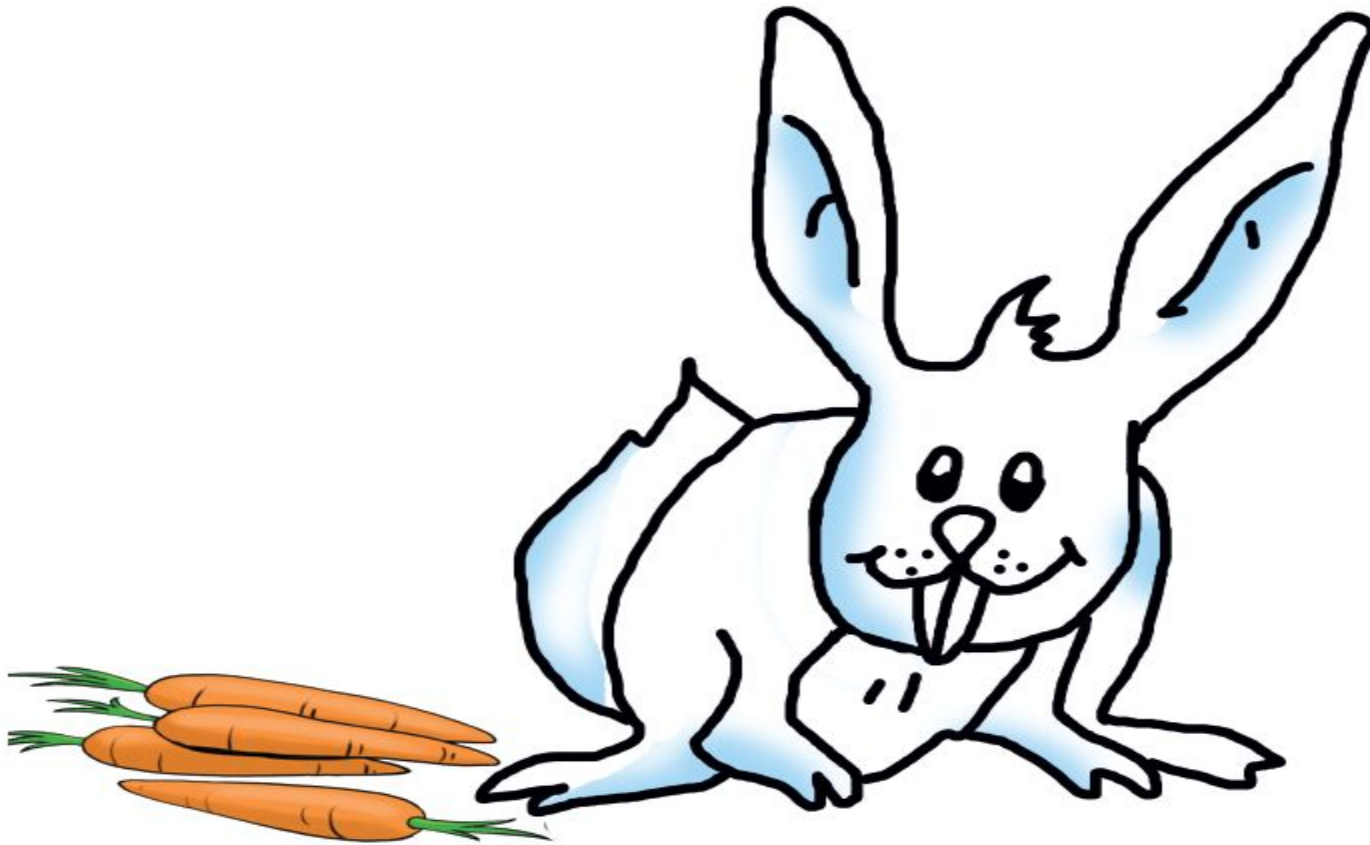
Pp-pin



Qq-queen



Rr-rabbit



Ss-snake



Tt-tree



Uu-umbrella



V/v-vest



Ww-window



Xx-box



Yy-yacht



Zz-zip

