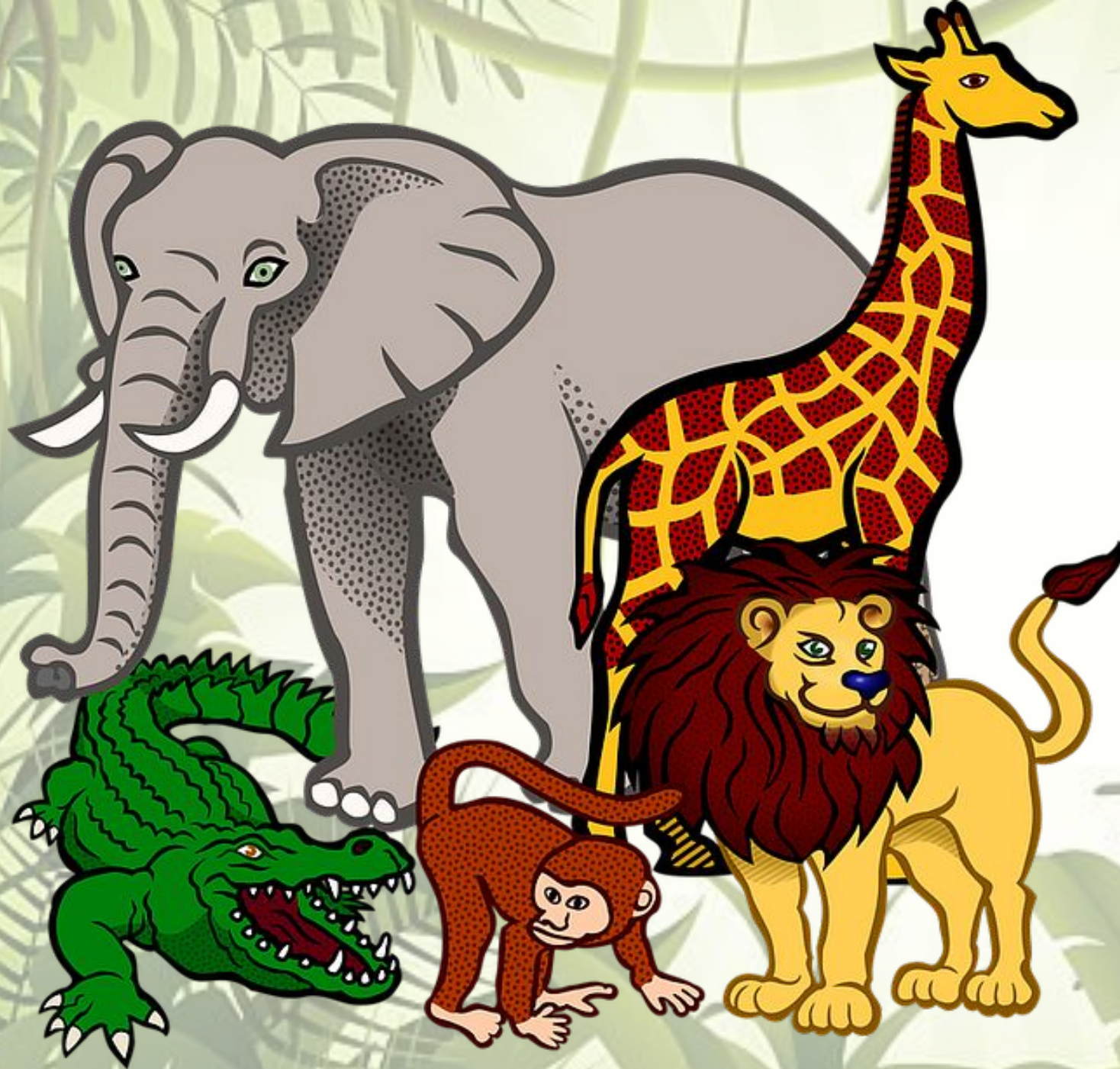


The background is a lush, green jungle scene. It features various types of tropical plants, including large monstera leaves with characteristic holes, ferns, and thin, hanging vines. The overall color palette is a range of greens, from light lime to deep forest green, creating a vibrant and naturalistic atmosphere.

Animals



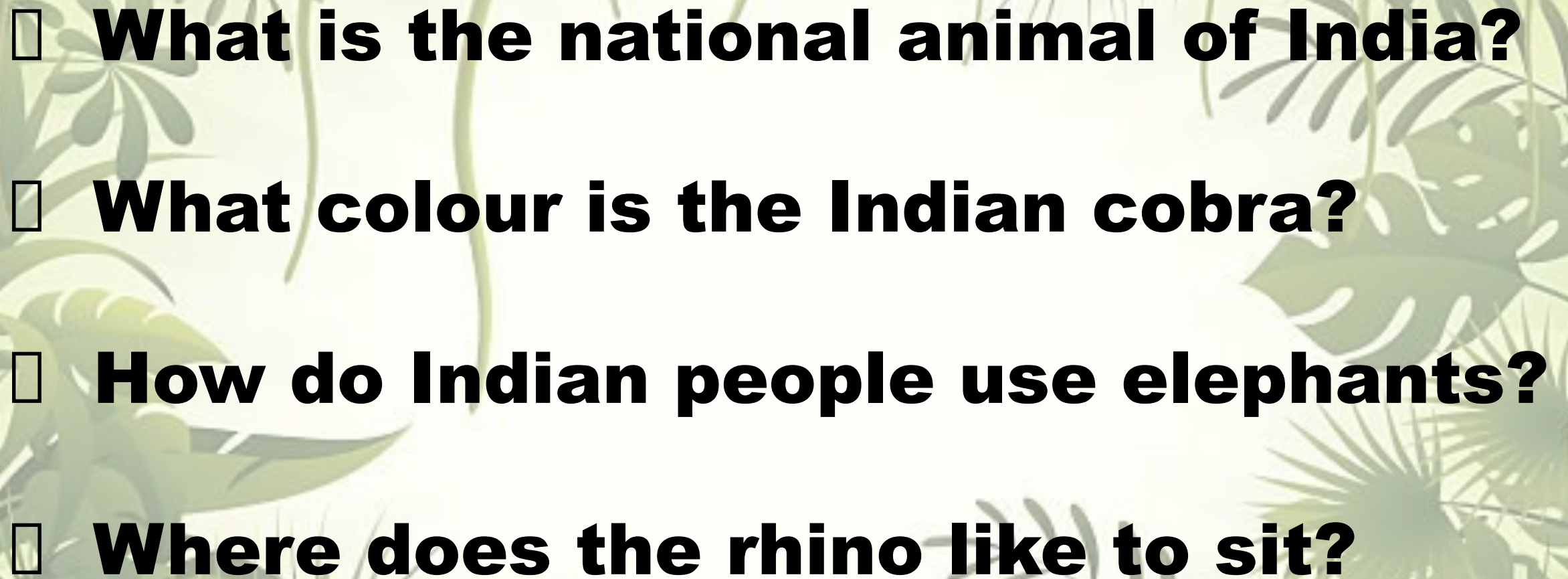
**What can
you add?**

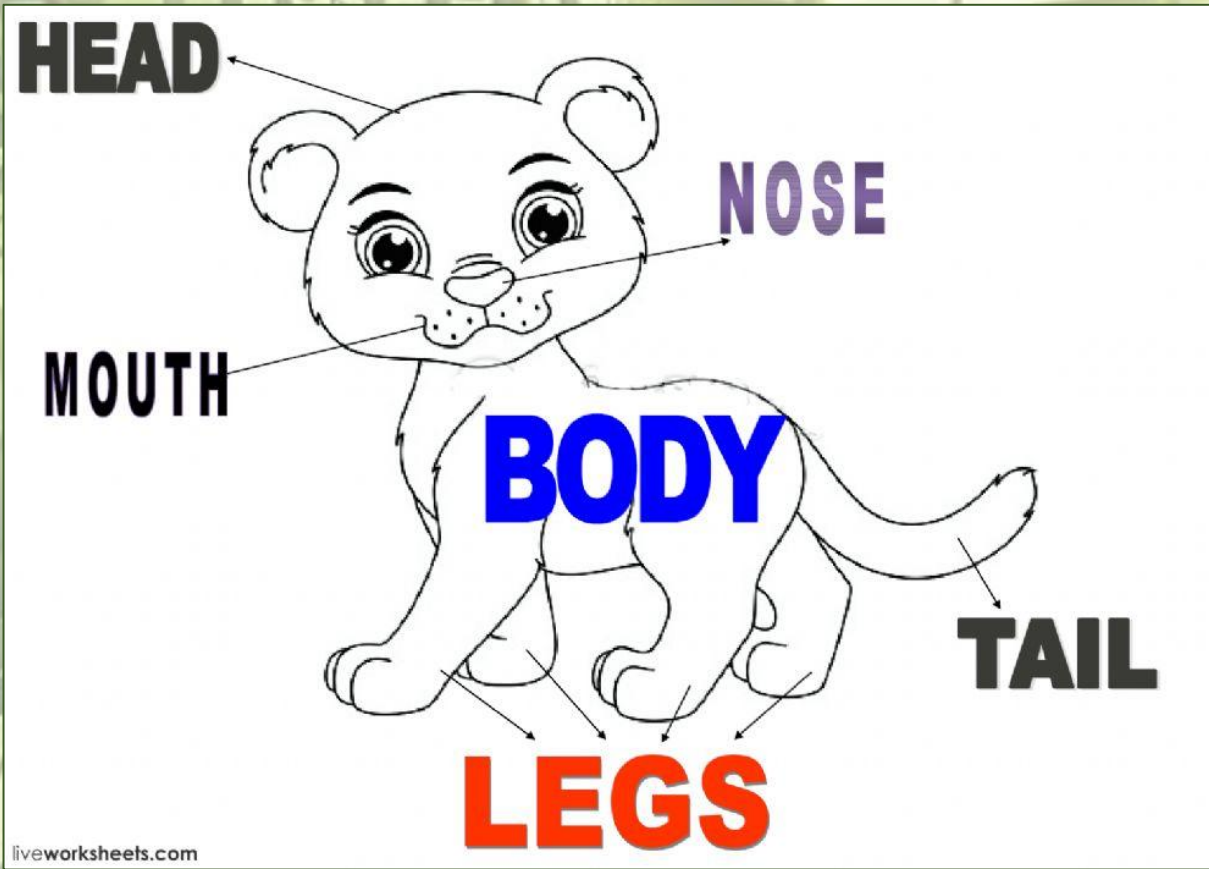
t	i	g	e	r	l
b	l	i	a	e	i
r	t	r	m	e	o
e	a	a	b	d	n
d	c	f	r	o	w
y	s	f	o	x	n
e	z	e	b	r	a

**Here you can
find 8 names
of animals!**

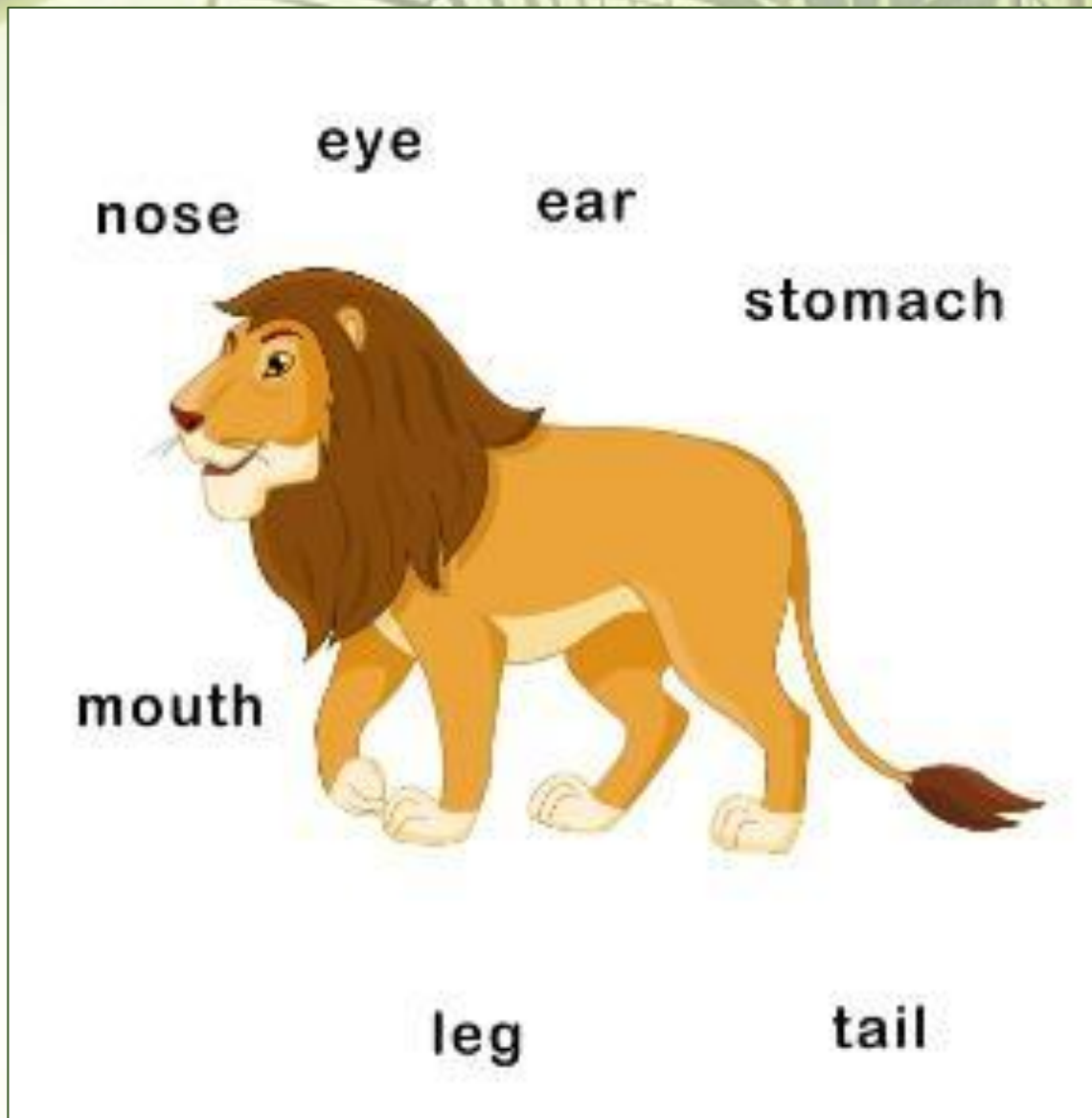
t	i	g	e	r	l
		i		e	i
	t	r	m	e	o
	a	a		d	n
	c	f			
		f	o	x	
	z	e	b	r	a

**Here you can
find 8 names
of animals!**

- 
- ❑ **What is the national animal of India?**
 - ❑ **What colour is the Indian cobra?**
 - ❑ **How do Indian people use elephants?**
 - ❑ **Where does the rhino like to sit?**



Name!



Find and show!

It's yellow and brown.

It's very tall.

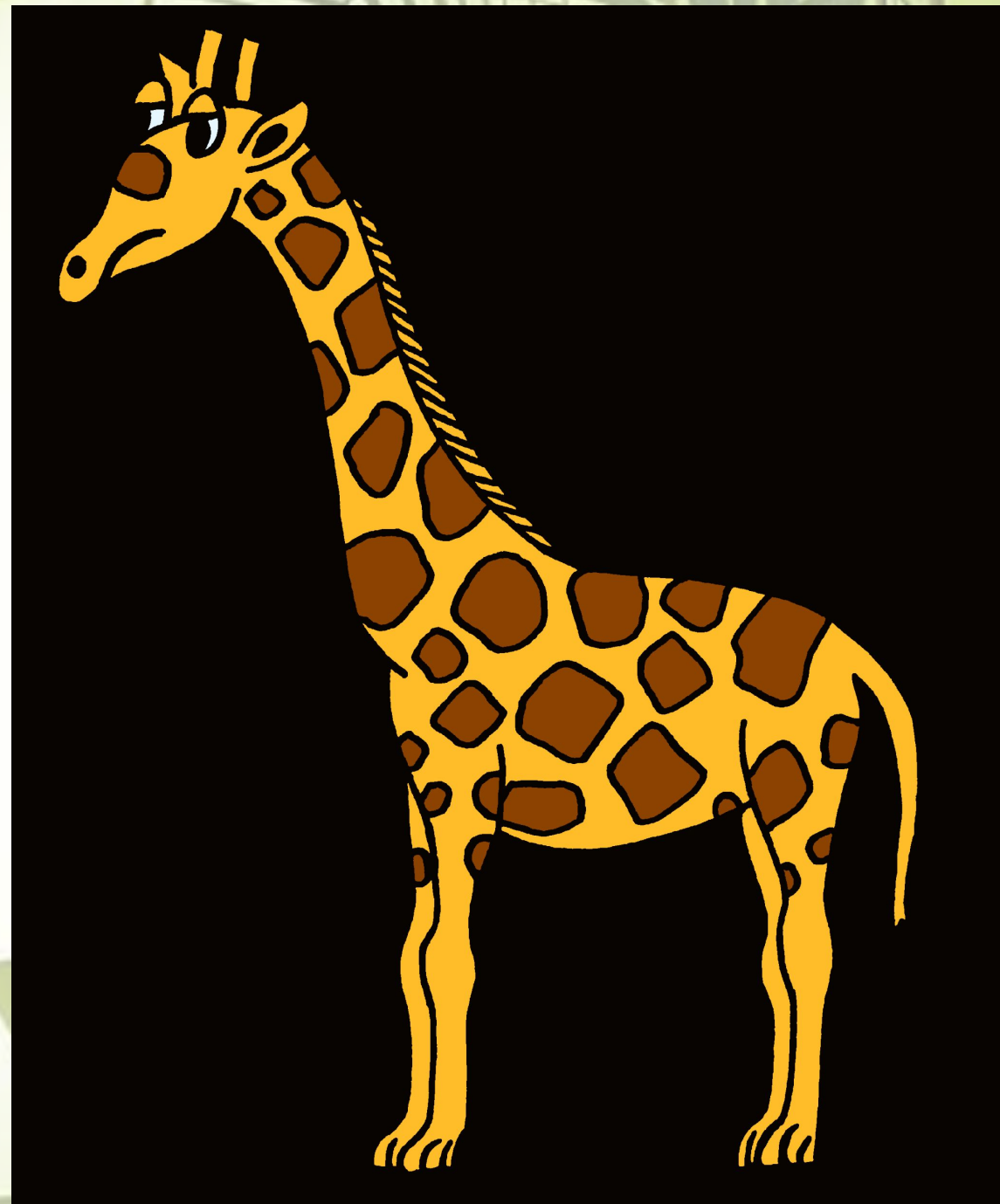
It's got a long neck,

two small horns,

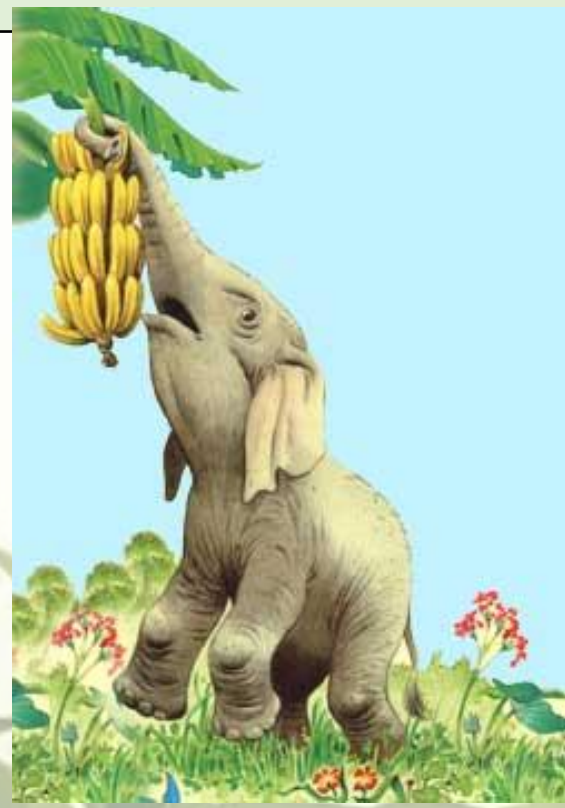
four long legs

and a long tail.

What is it?



Permanent state	Repeated action	Habits
Tigers have four legs.	Elephants usually eat fruit.	Rhinos like to sit in water or in mud.



What we can do:

How often	What we can do	How	Where
always	run	well	in the park
usually	swim	fast	at home
often	dance	loudly	at school
sometimes	cook		in the forest
every day	sing		in the garden
at the weekends	play		in the river
	help my mom		

What we can say: ***Now I can...***

... name

... talk about

***(animals; parts of the
bodies of animals;
our everyday life and
habits)***

