

# The history of Mount Rushmore National Memorial

Презентацию выполнила  
А.И. Афанасова  
учитель английского ЯЗЫКА  
МКОУ СОШ № 6 с. Нагутское

The Mount Rushmore Monument is one of the greatest artistic endeavors in the history of the US.



South Dakota  
 1917. The bill was introduced in the House on May 10, 1917, and passed on May 11, 1917. It was then sent to the Senate, where it was reported out by the Committee on Public Lands and Surveys on June 1, 1917. The bill was then passed by the Senate on June 1, 1917. It was then signed into law by President Woodrow Wilson on June 1, 1917.

"... It was decided that the individuals who best exemplified the foundation, expansion and preservation of the Republic—Washington, Jefferson, Lincoln and Theodore Roosevelt—should be the subjects of the memorial".

68TH CONGRESS  
2d Session

S. 4189

IN THE SENATE OF THE UNITED STATES

FEBRUARY 2, 1925

Mr. NORRICK introduced the following bill; which was read twice and referred to the Committee on Public Lands and Surveys

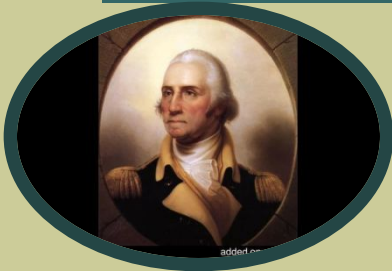
**A BILL**

To authorize the creation of a national memorial in the Harney National Forest

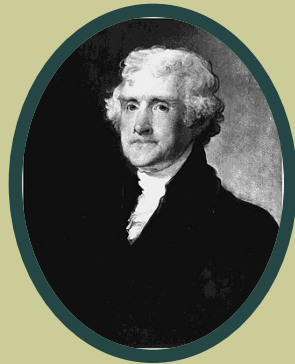
1 Be it enacted by the Senate and House of Representa-  
 2 tives of the United States of America in Congress assembled,  
 3 That the Mount Harney Memorial Association, hereafter to  
 4 be created by the Legislature of South Dakota, is hereby  
 5 authorized to carve a memorial in heroic figures commemora-  
 6 tive of our national history and progress upon a suitable  
 7 exposure of the Harney Mountain Range located within the  
 8 boundaries of the Harney National Forest in the State of  
 9 South Dakota. Such association is further authorized to  
 10 select the name, location, and design of such memorial:  
 11 *Provided*, That the United States shall be put to no expense  
 12 in respect of such memorial.

Located in Keystone, South Dakota, the monument was created in honor of the achievements of four of US past presidents

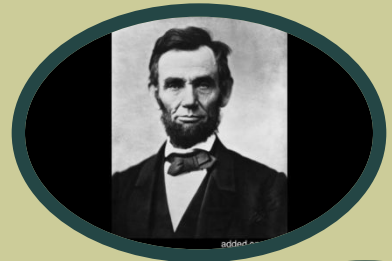
---



**Georg Washington represents the struggle for independence**



**Thomas Jefferson, the idea of government by the people**



**Abraham Lincoln for his ideas on equality**



**Theodore Roosevelt for the role of US in world affairs**



## Do You Know?

---

Mount Rushmore is named after New York City attorney Charles E. Rushmore, who came to the Black Hills in 1884 to check legal titles on properties. On returning to Pine Camp he asked Bill Challis [a local resident and guide] the name of this mountain. Bill replied, "Never had a name but from now on we'll call it Rushmore."

# Doane Robinson

## 1856-1946

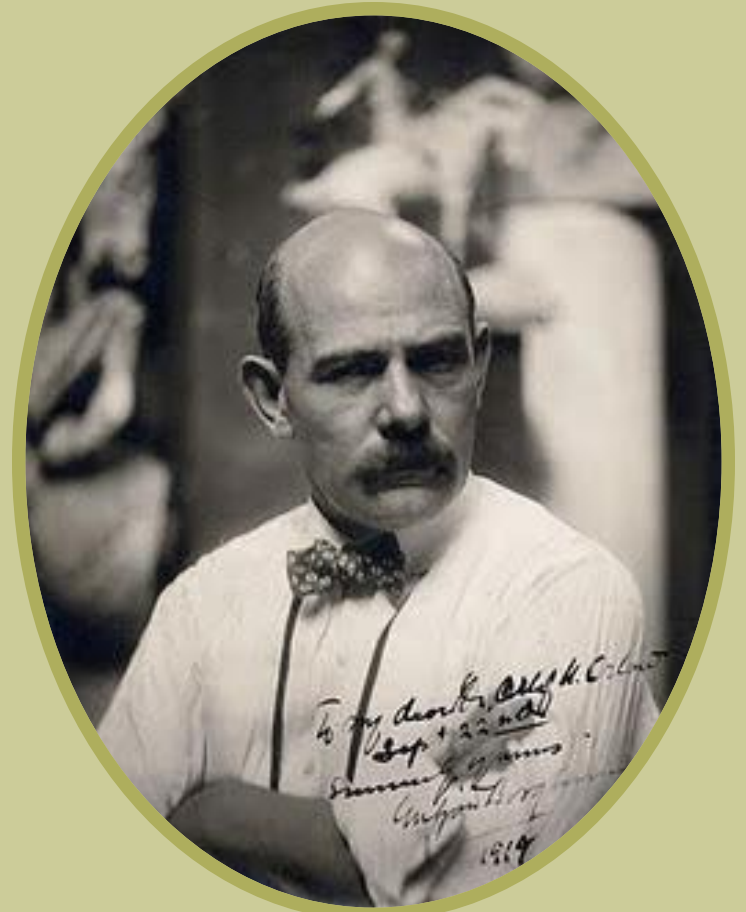
---



**Doane Robinson** is known as the "Father of Mount Rushmore." It was his idea for colossal carvings in the Black Hills. He wanted to create an attraction that would draw people from all over the country to his state.

---

Robinson asked for an architect and sculptor Gutzon Borglum to sculpt and design the monument.



---

In August of 1924 he contacted Gutzon Borglum. In his letter Robinson invited Borglum to visit South Dakota and talk over the possibility of carving a mountain.





# GUTZON BORGLUM

Sculptor, Mount Rushmore  
1867 - 1941

---



Borglum took Robinson up on his offer and met with him during September of 1924 and again in August of 1925.

## *GUTZON BORGLUM*

**Sculptor, Mount Rushmore  
1867 - 1941**

---

During his second trip  
Borglum found Mount  
Rushmore.

Doane Robinson's idea  
was a success.

Borglum decided to use  
Mount Rushmore to  
making sculpture, as it  
seems this is the easy  
part to do it.



# Borglum made a model of the figures before he started



Borglum created a plaster model from which measurements were taken using the pointing system.

The Borglum Studio.



Gutzon Borglum works on his clay model for Mount Rushmore in his studio on the Brackenridge Park Golf Course in San Antonio, Texas.

# On October, 1927 the first actual work of carving began

---

One inch on the model represented one foot on the finished sculpture; a 1-to-12-inch scale.



You will notice that more of the body and arms are shown in the original model.

# President Coolidge at the 1927 dedication

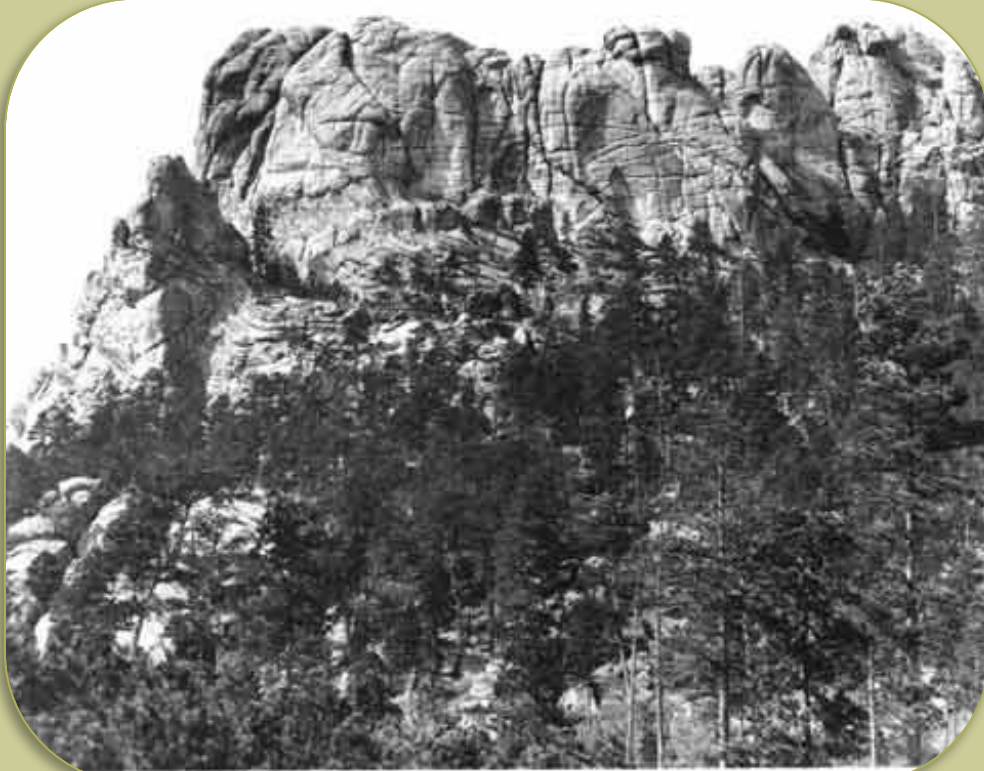
---



“Mount Rushmore is decidedly American in its conception, magnitude and meaning. It is altogether worthy of our country,” President Calvin Coolidge proclaimed at the dedication of the project in 1927.

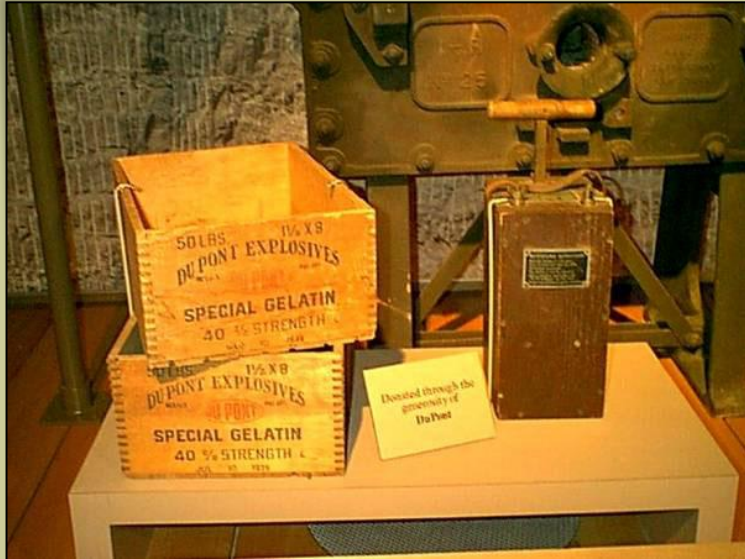
# Mount Rushmore Before Carving

---



Mount Rushmore  
in 1905, before  
work began on  
the four faces

# A picture of the dynamite plunger



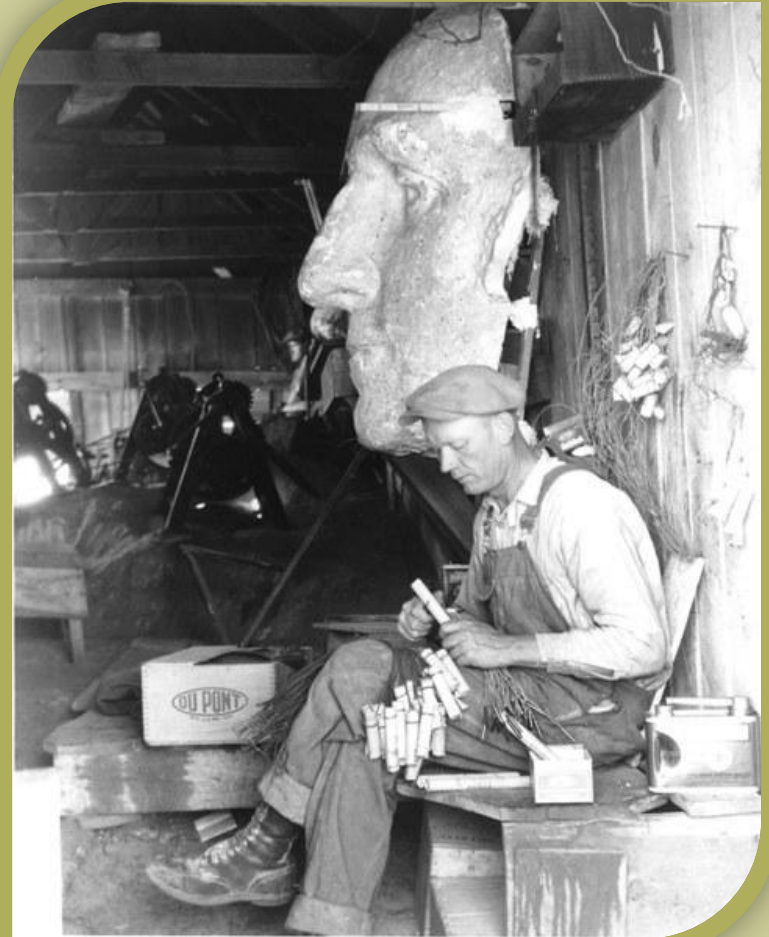
Over 90% of Mount Rushmore was carved using dynamite.

Dynamite blasts removed approximately 450,000 tons of rock from the mountain.



# Powder man John Johnson

Several hundred workers, who usually worked as a miner, a sculptor, or a rock climber, using dynamite, jack hammering, and sculptors to sculpt a model of the mountain.





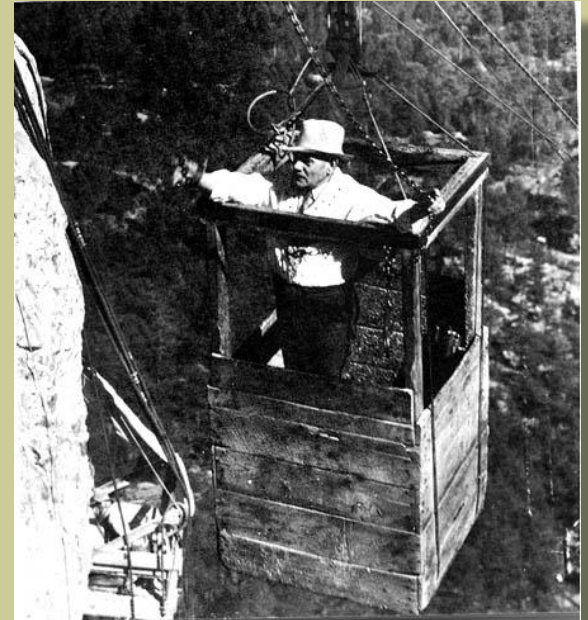
Borglum in BOSUNTOS  
CHAIR, 1930

## The beginning of the work



The American Icon  
Work on the famous  
American icon Mount  
Rushmore began.

It would take another 12 years  
to complete this treasure that  
features George Washington,  
Thomas Jefferson, Abraham  
Lincoln and Theodore  
Roosevelt.



An Artist working on  
Mount Rushmore

# Mount Rushmore Tool Survey

---



## **A close-up photo of the first president of the United States George Washington**

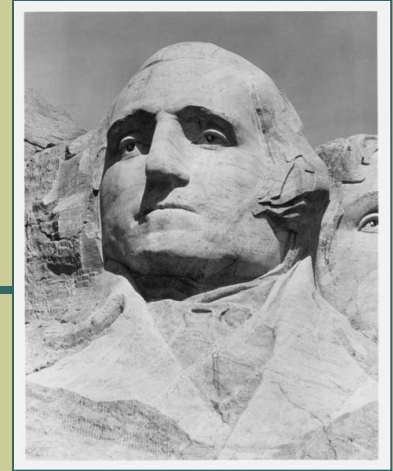
---

Going from left to right, the first sculpture is of George Washington, leader of the Revolutionary forces, 1st President and "Father of our Country".



# George Washington

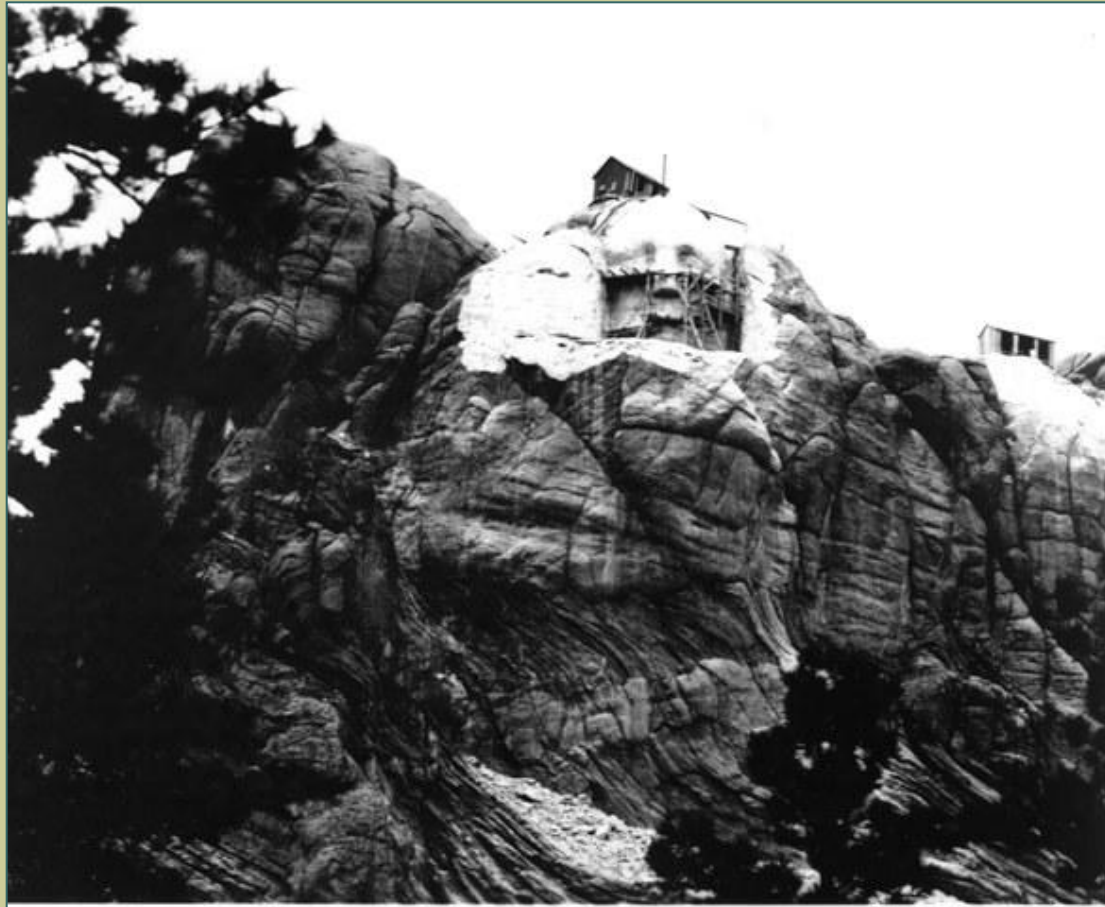
---



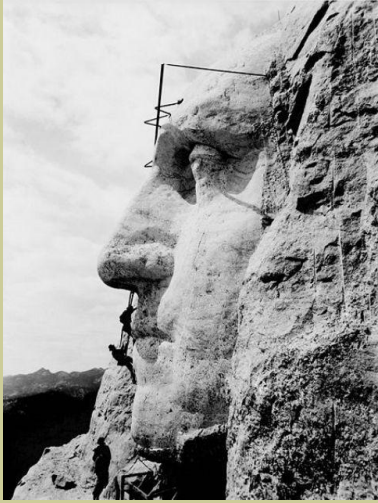
George Washington's is the first head are made. Due to economic instability United States by the Great Depression, the head was completed in seven years, and is dedicated to the public on Independence Day 1934. A large American flag placed on the head of Washington before it was revealed its meaning, and it later became a tradition for each head of the President.

# Washington figure under construction

---

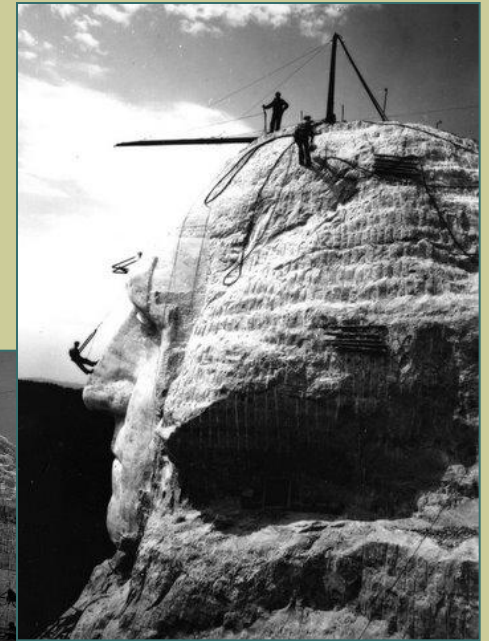
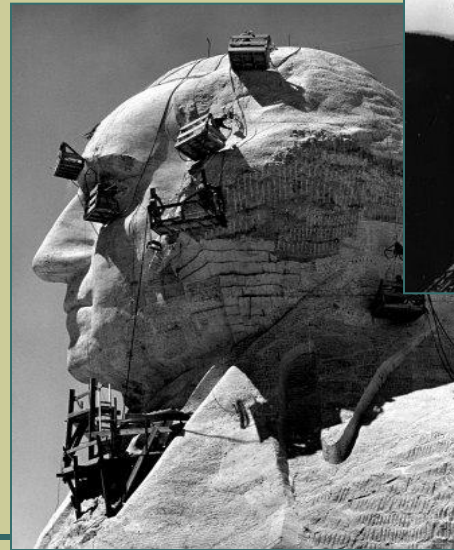


# A construction on the George Washington portrait at Mount Rushmore, 1932



Mount Rushmore's  
Georg Washington being  
maintained by WPA  
workers.  
(1933-34)

Men working on one  
of the heads.



# Granite portrait of Thomas Jefferson

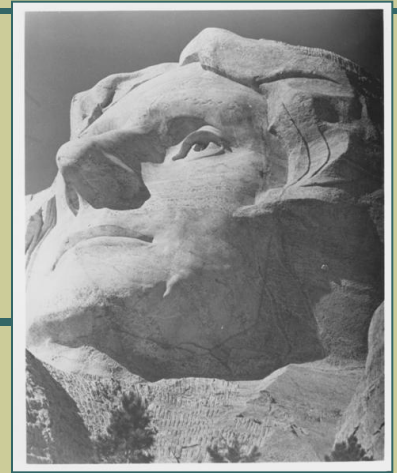
---



The second sculpture is of Thomas Jefferson, the author of "The Declaration of Independence" and 3rd President.

# Thomas Jefferson

---



Thomas Jefferson was the next head, located to the left of Washington. Before the head was finished, Borglum ordered that the head was blown up due to poor quality stone. Chief Jefferson begins again with the right hand of Washington's position. Chief Jefferson dedicated in 1936.



## Washington and Jefferson under construction

---

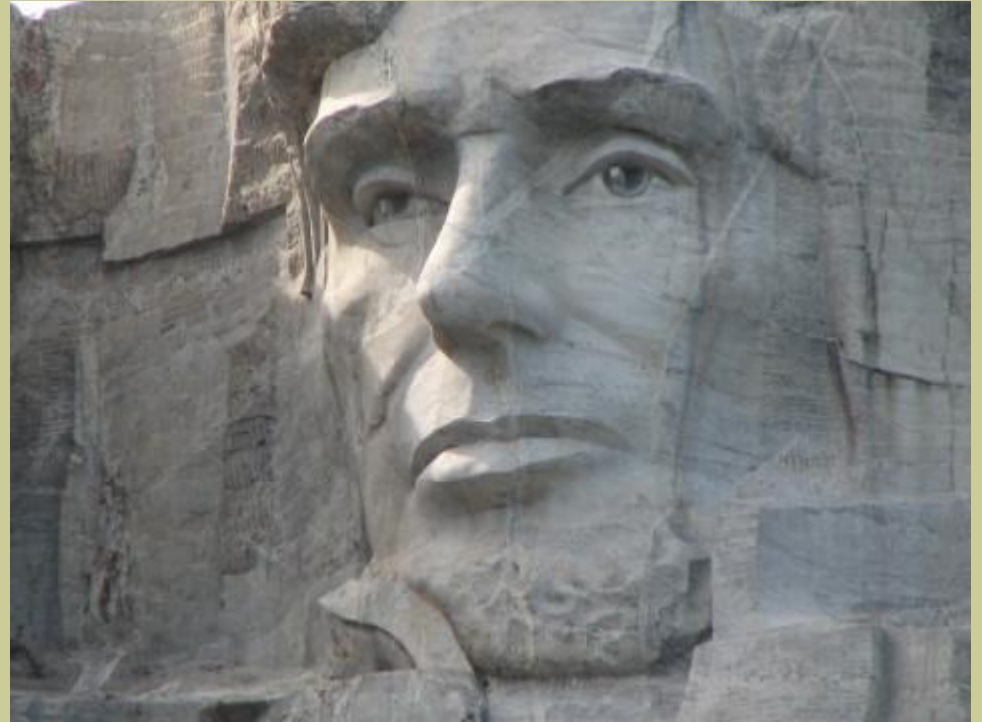


Thomas Jefferson was originally positioned on Washington's right, but this face was blown up and a new one carved between Washington and Roosevelt.

# Granite portrait of Abraham Lincoln

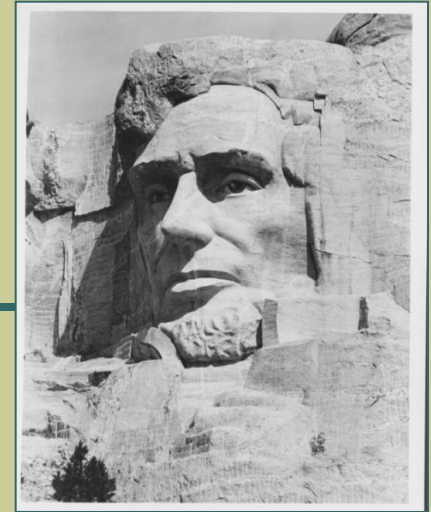
---

The fourth sculpture is of Abraham Lincoln, 16th President, and leader during the "Civil War". He helped preserve the Union, and put an end to slavery in the United States. The project continued for 14 years.



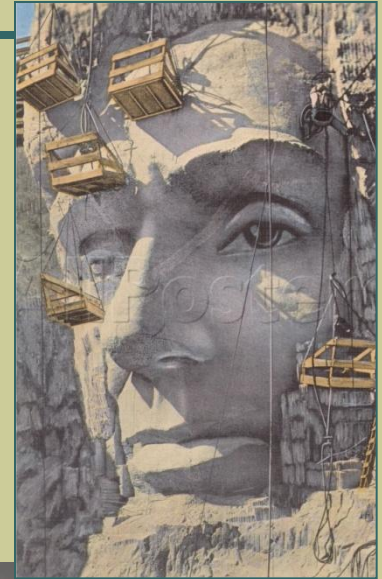
# Abraham Lincoln

---



Abraham Lincoln's head is more of a challenge because of his beard, but his head has been completed at the right end of the cliff, dedicated on September 17, 1937, at the time of the 150th anniversary of the signing of the Constitution of the United States in 1787.

# Lincoln figure under construction, 1937



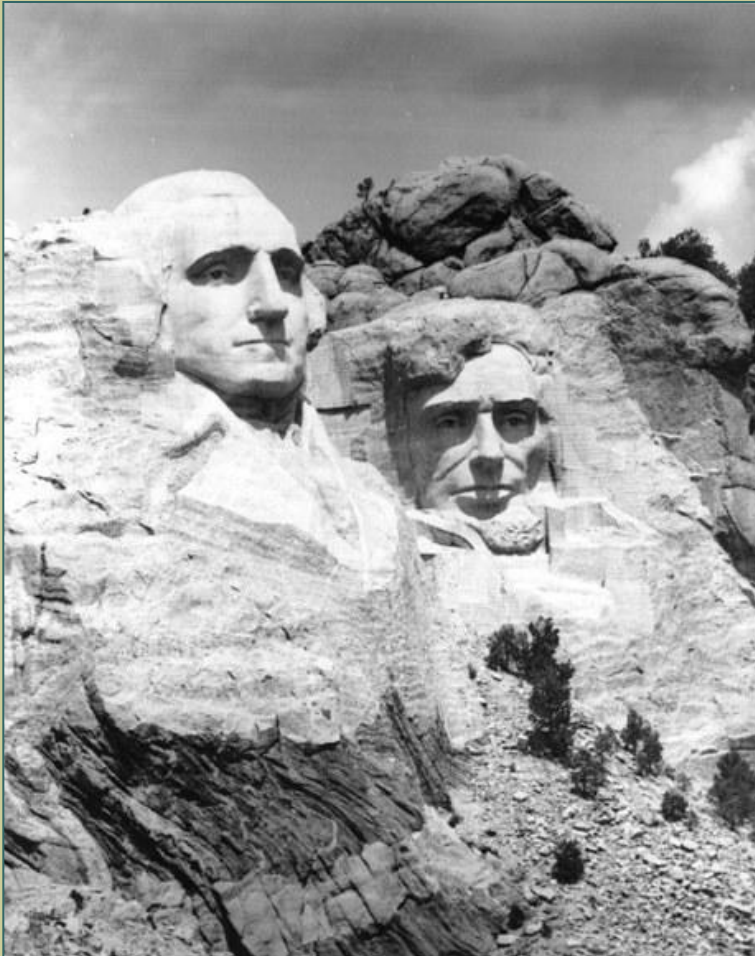
Scaffolding  
around Head of  
Abraham Lincoln,  
partially  
sculptured during  
Mt. Rushmore  
construction





You can see  
Borglum in the  
picture of  
Lincoln's head.  
He is in a sling  
below the  
president's eye.

# View of Washington and Lincoln



About 800 million pounds of rocks were excavated for the sculpture.

# Sculpture of Theodore Roosevelt

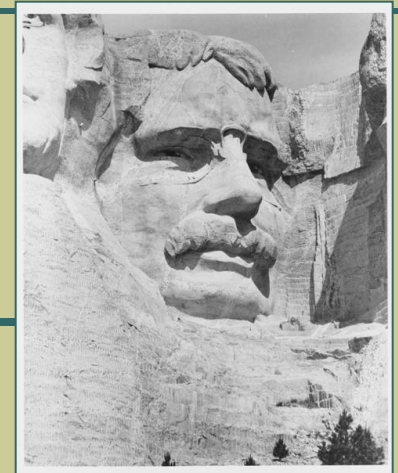
---



The third sculpture is of Theodore Roosevelt, 26th President, and he was instrumental in the construction of the Panama Canal. A conservationist, he helped preserve much of the land that makes up National Forests and Parks.

# Theodore Roosevelt

---



While Theodore Roosevelt's head is being built, accommodation for tourists was also built, including plumbing, lighting, and a visitor center. Because not find a suitable stone, the sculptor further cut into, to the mountain. This raises concerns about how much they cut. On July 2, 1939, head of Roosevelt dedicated.



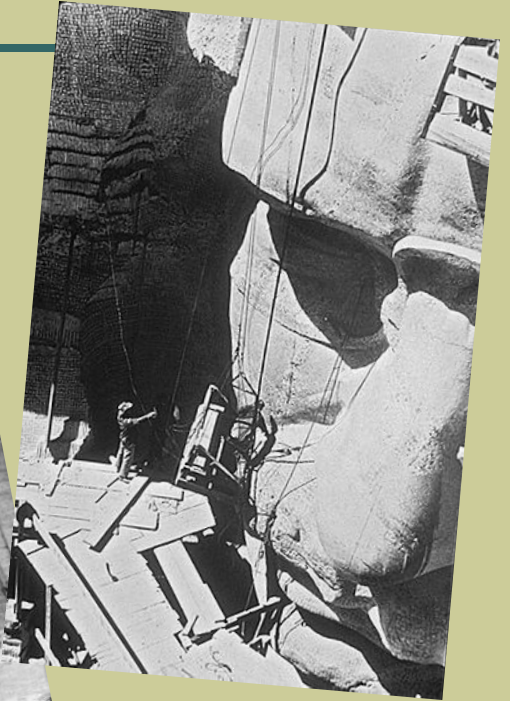
# **Mt. Rushmore under Construction, Black Hills, SD, 1936**

---



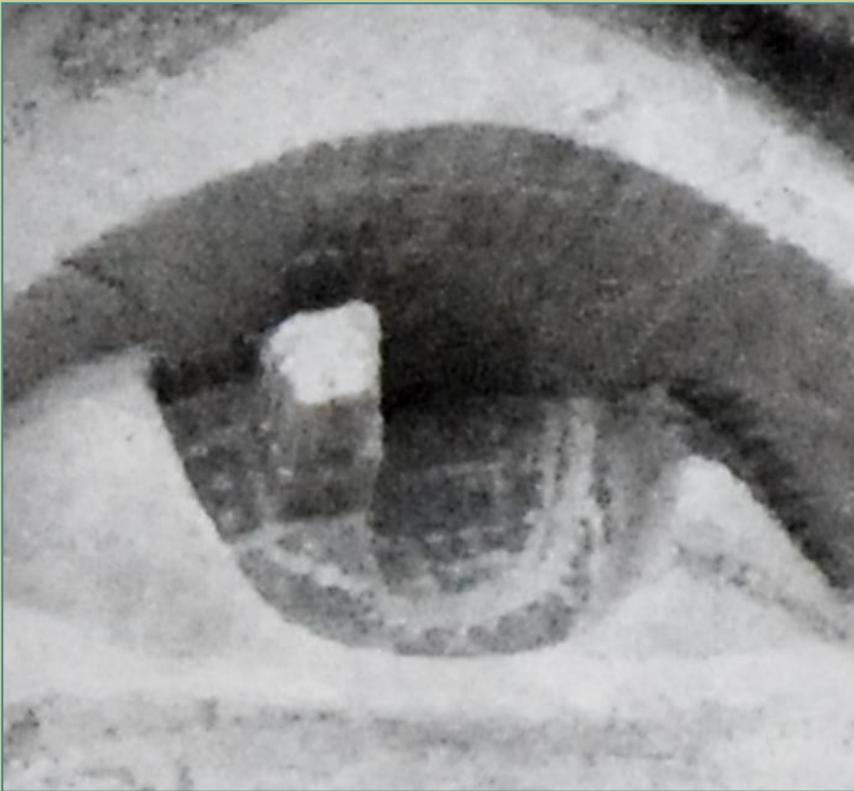
# Spoiler for Theodore Roosevelt Construction

The fine details of the faces were achieved with a jackhammer. Operators hung from the top of the mountain in bosun chairs held by steel cables.



# The construction of eyes

---



In order to make the faces more realistic the iris of the eyes were holed and a specially designed piece of granite was kept in the center for light reflection and making the eyes look more realistic.

# **Mt. Rushmore under Construction, Black Hills, SD, 1939.**

---



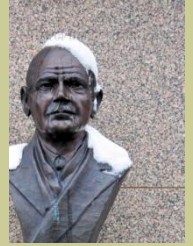
# Aerial view of Mt. Rushmore



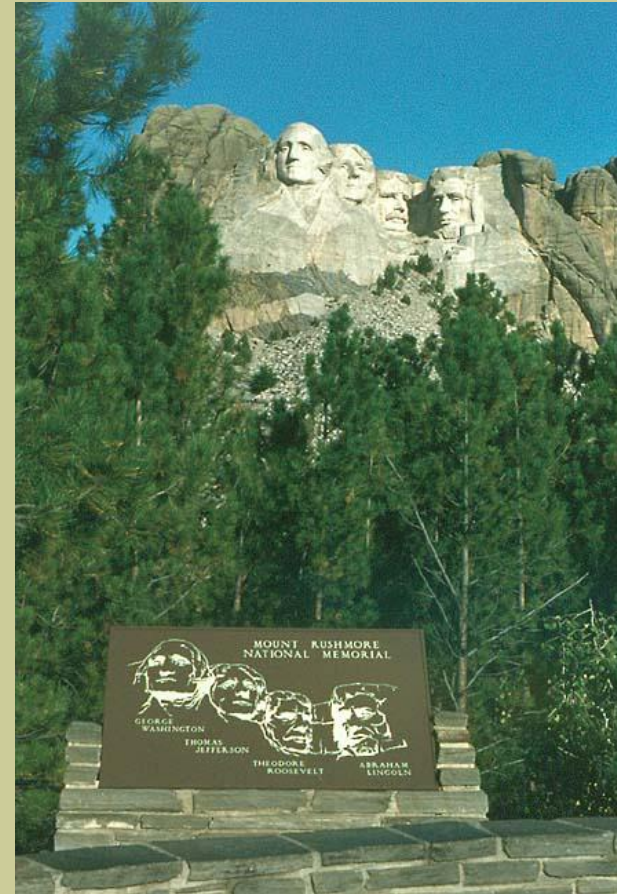
# At the End of the Construction

---





Mount Rushmore has grown in fame as a symbol of America - a symbol of freedom and a hope for people from all cultures and backgrounds.



# The monument of Gutzon Borglum



Borglum died in 1941. Today many tourists come to see Mount Rushmore. It is a national memorial.



## Интернет - ресурсы:

---

1. <http://www.fotosearch.com/photos-images/mt-rushmore.html>
2. <http://www.host-culture.com/2011/05/history-of-mount-rushmore-national.html>
3. [http://www.dakotaphoto.smugmug.com/gallery/3995249\\_SAnSw#232353542\\_RuqrA](http://www.dakotaphoto.smugmug.com/gallery/3995249_SAnSw#232353542_RuqrA)