

**What's**

**the time ?**





**- What time is it now  
?**

**- It is twelve o'clock.**





**When it is 4 o'clock in Moscow, it is .. ....in....**



**Moscow**



**Minsk**



**Istambul**



**Warsaw**



**Kiev**



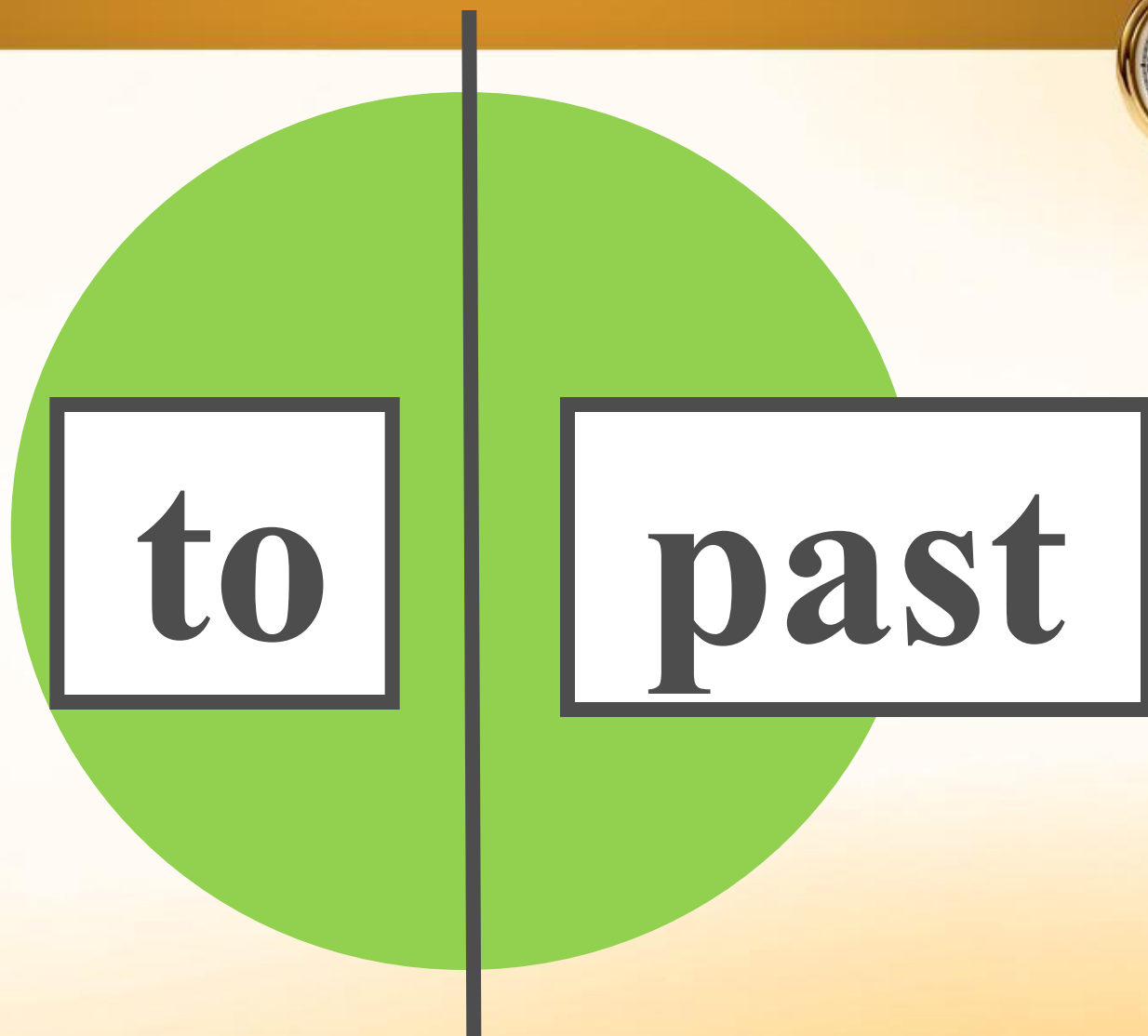
**Washington**



**Paris**



**London**







**5 minutes past**



**5 minutes to**



# What time is it now?



**Is it**

**twenty to twelve**

**or**

**twenty past twelve ?**



# What time is it now?



**It is twenty to twelve**

# What time is it now?



Is it

ten to ten

or

ten past ten ?

# What time is it now?



**It is ten past ten .**

# What time is it now?



Is it

twenty to two

or

twenty past two ?



# What time is it now?



**It is twenty to two.**

# What time is it now?



**Is it**

**five to three**

**or**

**five past three ?**

# What time is it now?



**It is five past three .**

# What time is it now?



Is it

twenty to four or twenty past four ?



# What time is it now?



**It  
is**

**twenty past four .**

# What time is it now?



Is it

five to twelve

or five past twelve ?

# What time is it now?



**It is five to twelve**

# What time is it now?



**Is it**

**five to nine**

**or**

**five past nine ?**



# What time is it now?



**It  
is**      **five past nine .**



**a quarter**

**past**

CLIPARTO

CLIPARTO

CLIPARTO



CLIPARTO

CLIPARTO

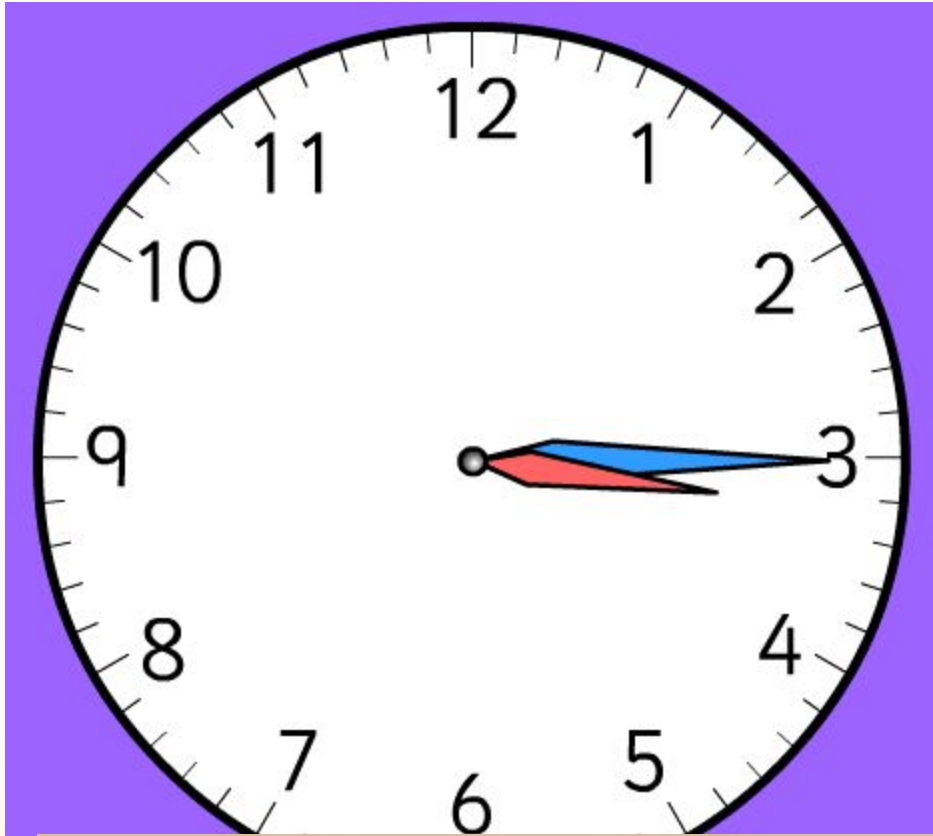
CLIPARTO



**a quarter**

**to**

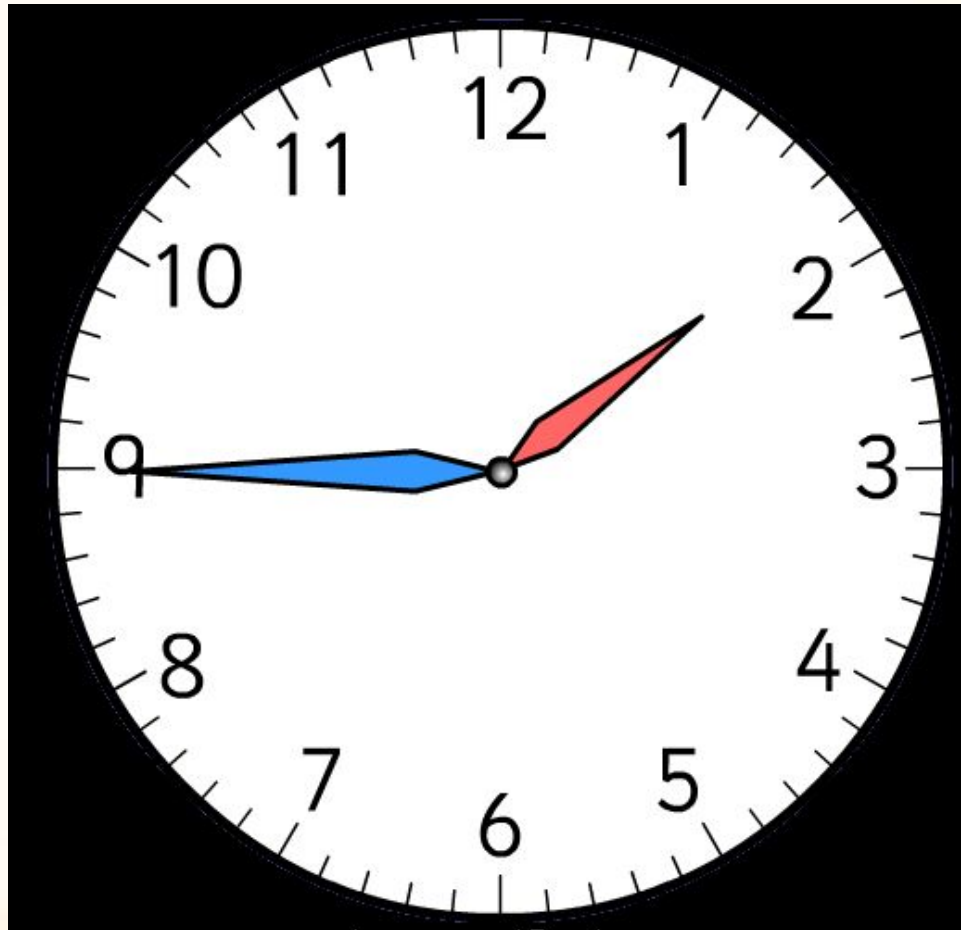
- What time is it now?



- It's a quarter past 3.



- What time is it now?



- It is a quarter to two.

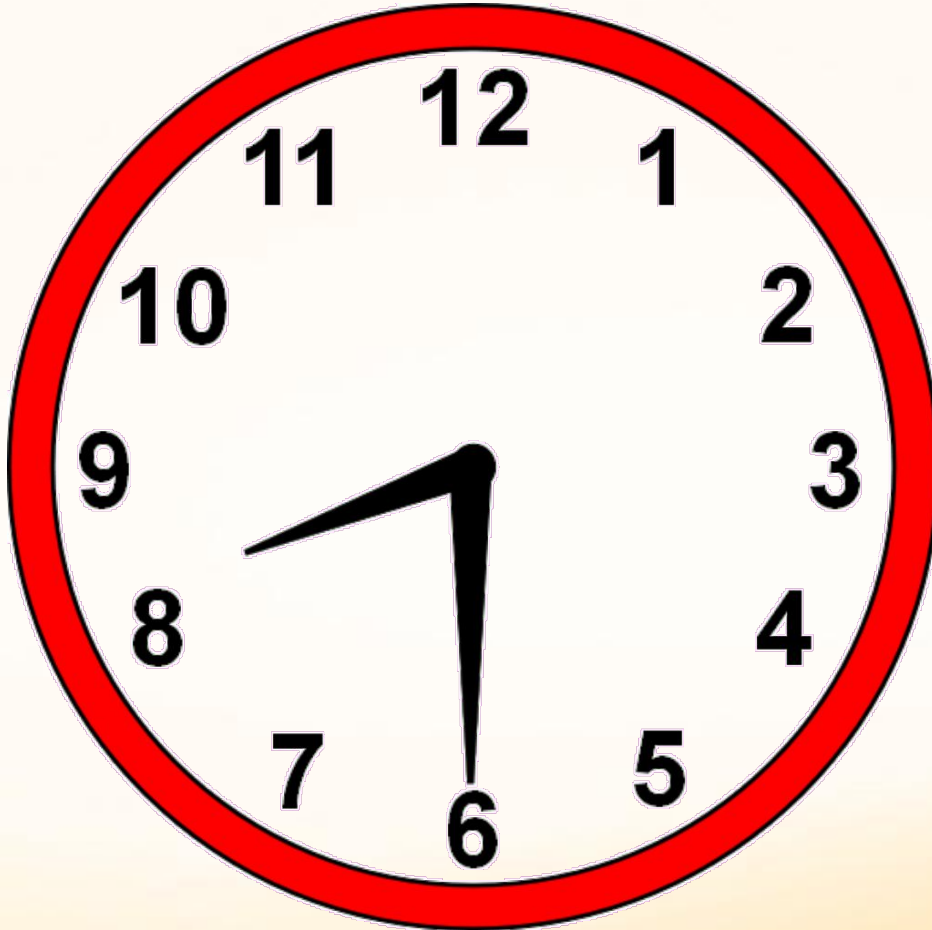


half past

~~half to~~

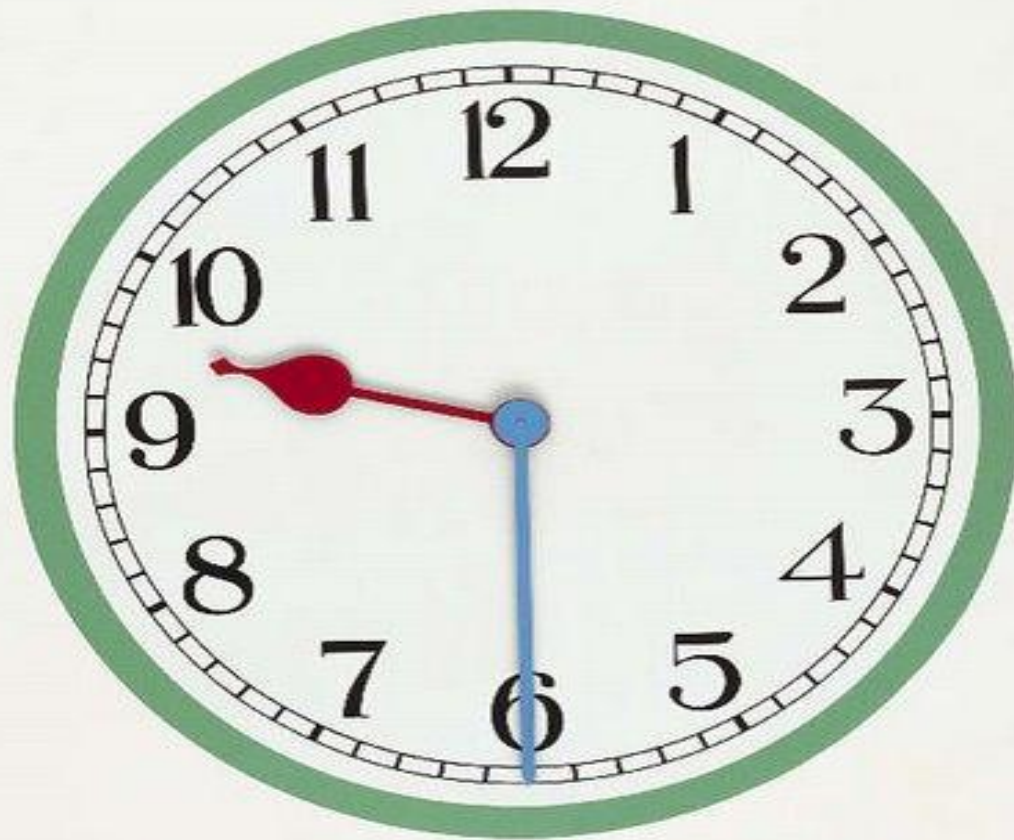
?

- What time is it now?



- It is half past 8.

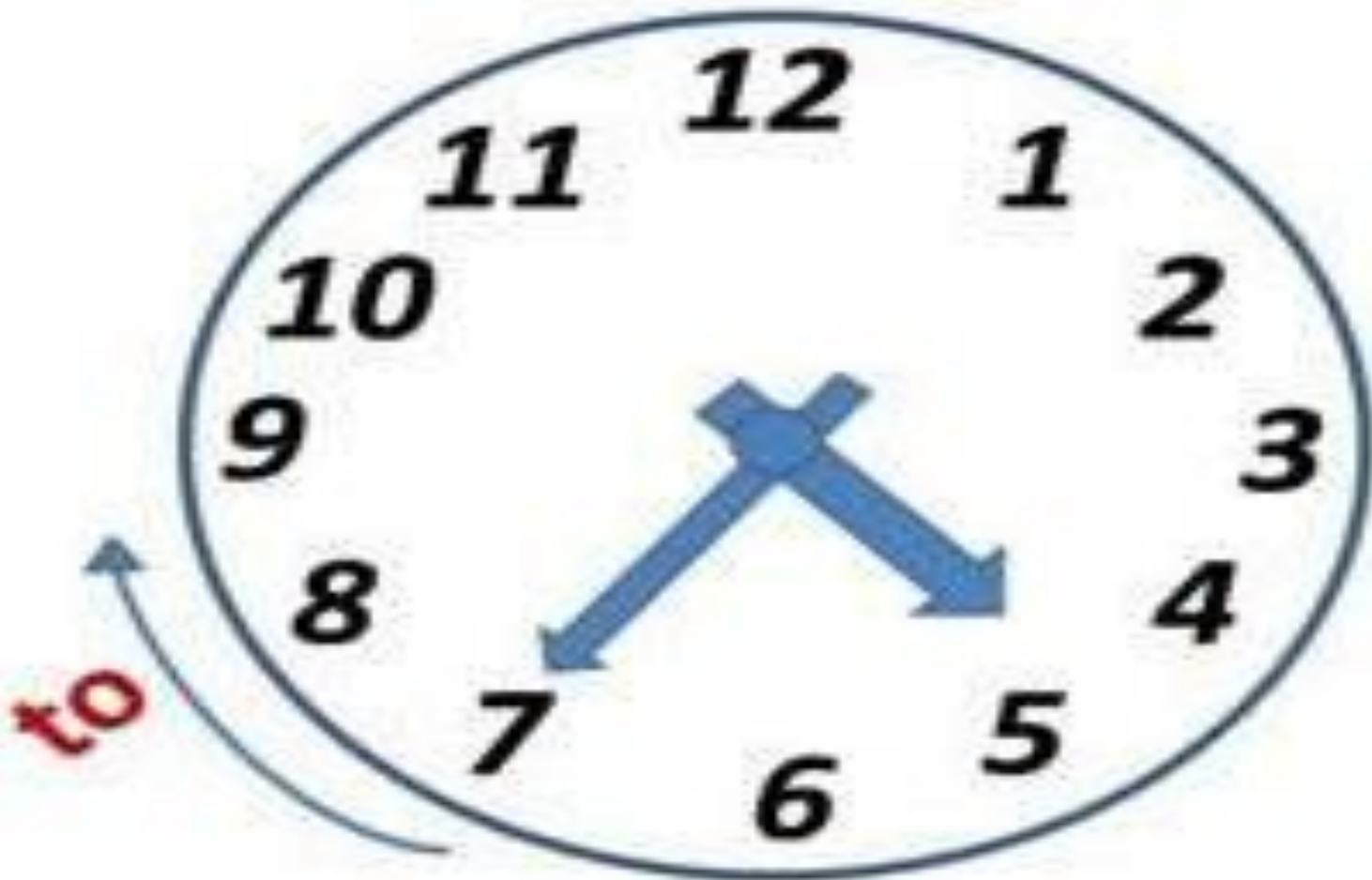
- What time is it now?



- It is half past 9.



- What time is it now?



- It is twenty-five to five.

- What time is it now?



- It is twenty past eight.

- What time is it now?



- It is twenty past one.

- What time is it now?



10:50

- It is ten to one.



- What time is it now?



- It is one to five.

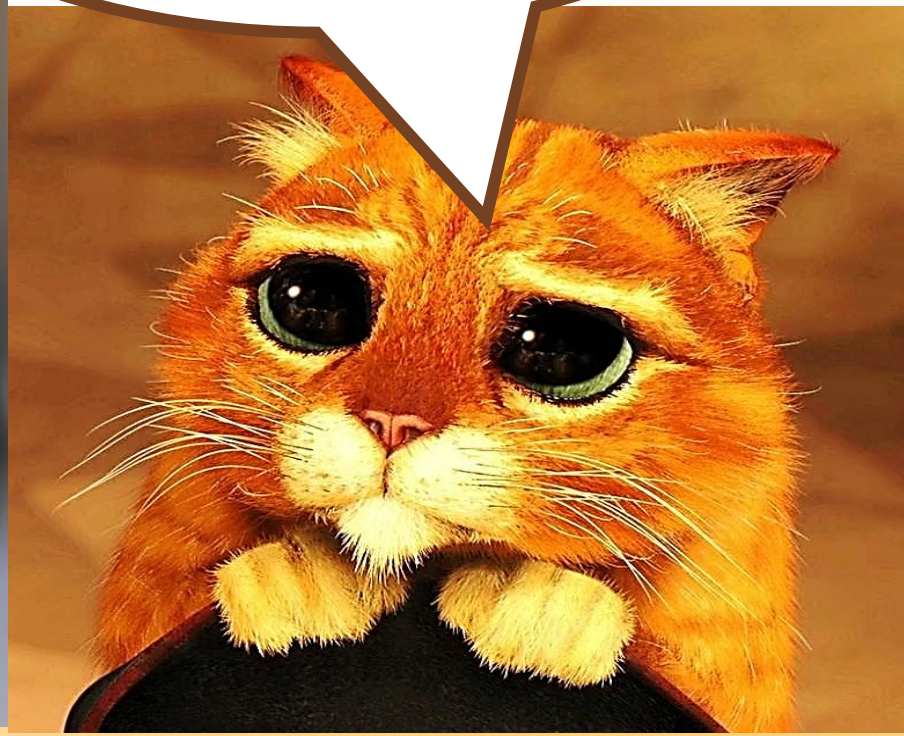
- What time is it now?



- It is half past seven.

A woman with blonde hair, wearing a black suit, is shown in profile from the chest up. She is looking down at her left wrist, where she is wearing a watch. Her right hand is raised, pointing towards her wrist. The background is a blurred office setting.

**It's  
.....**

A close-up of a fluffy orange tabby cat with large, expressive blue eyes. The cat has white fur on its chest and paws. It is looking directly at the camera with a slightly sad or questioning expression. The background is a warm, brownish-orange color.

**Excuse me!  
Could you tell  
me  
what time it is  
now?**