

# **ANIMALS IN THE OCEAN**

# SEA HORSE

---

- ❑ It's quite small and very beautiful.
- ❑ It's got a long tail and a long nose.
- ❑ It can swim fast.
- ❑ What is it?





# OCTOPUS

---

- ❑ It's usually brown.
- ❑ It's got eight long arms.
- ❑ What is it?



# STARFISH

---

- ❑ It is usually red, but it can be lots of colours.
- ❑ It's got five arms.
- ❑ It can't swim very fast.
- ❑ What is it?





# CORAL

---

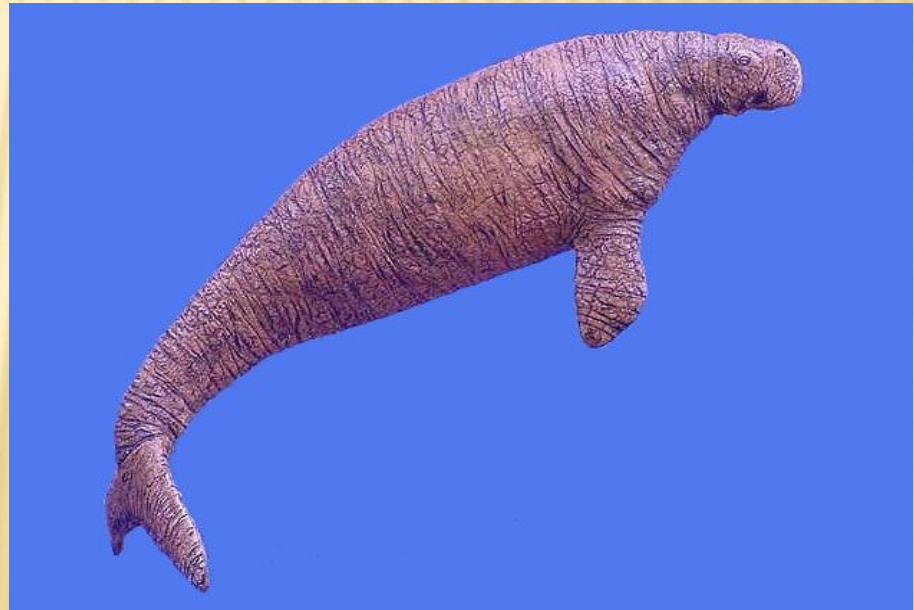
- ❑ It is very beautiful. It can be different colours: red, orange, white, green and more.
- ❑ It can't swim.
- ❑ It eats small animals.
- ❑ What is it?



# SEA COW

---

- ❑ It's got a fat body, two arms and a tail.
- ❑ It can't swim very fast.
- ❑ It doesn't eat meat, only vegetables.
- ❑ What is it?





# SHARK

---

- It's usually white and blue.
- It's got very big teeth.
- It eats meat.
- It is very dangerous
- What is it?

