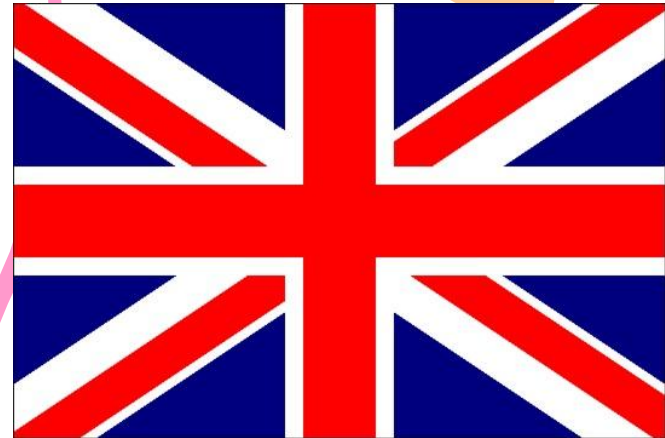
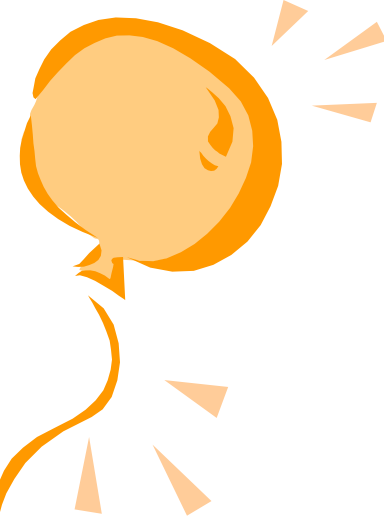


**We see, hear,
speak, do and
all will be OK!**



**What is the
weather like in
Britain?**



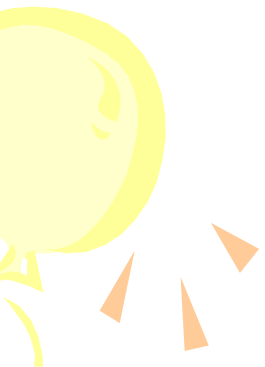
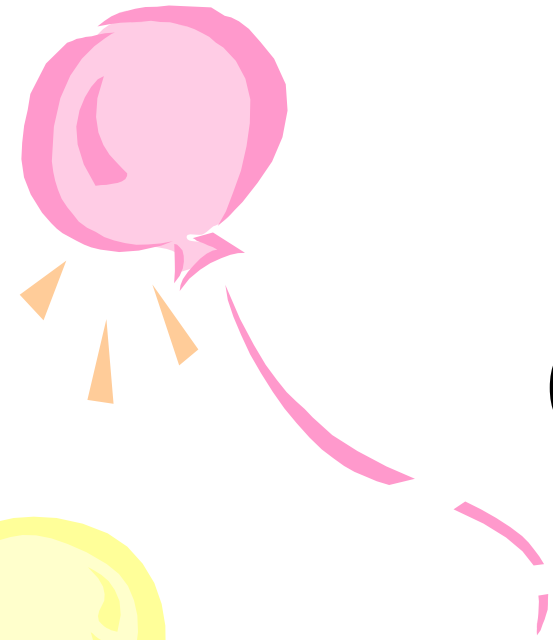


[k]

cold

cloudy

cool



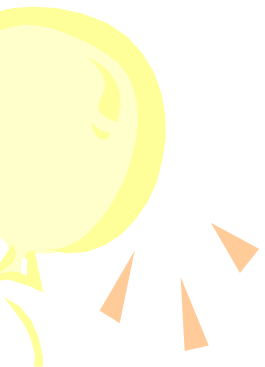
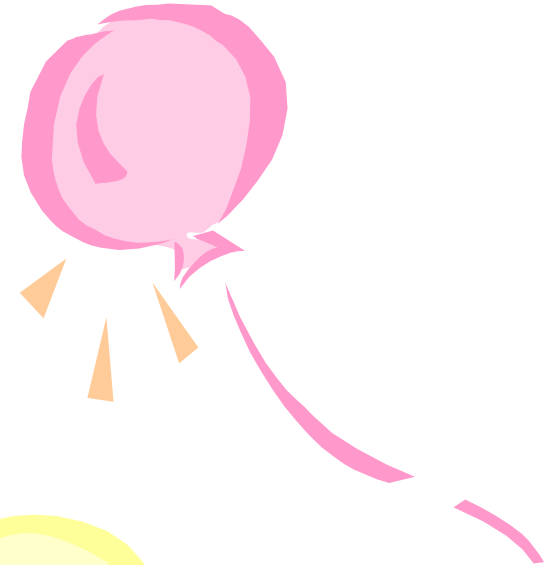


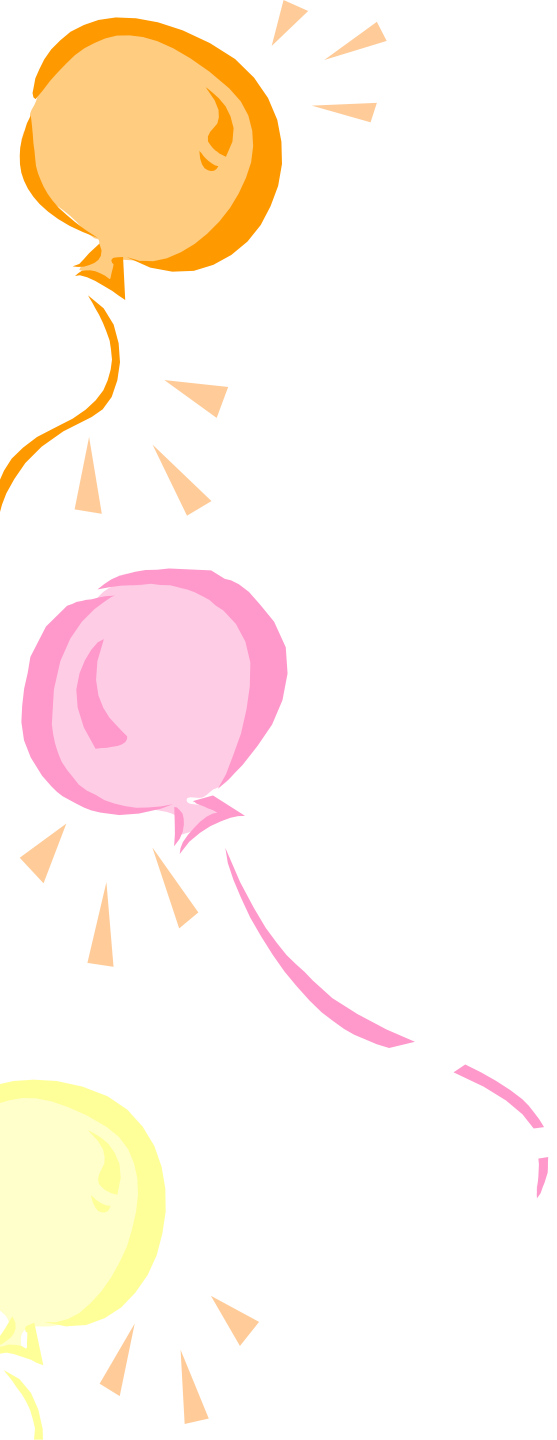
[t]

frosty

hot

stormy

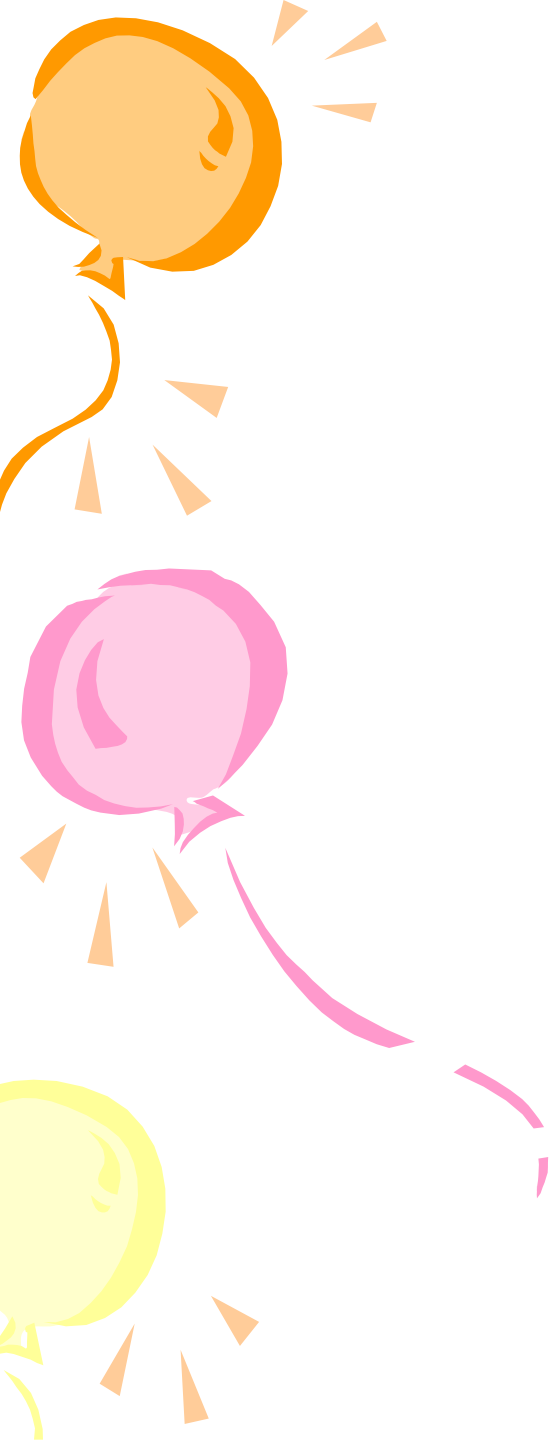




[f]

frosty

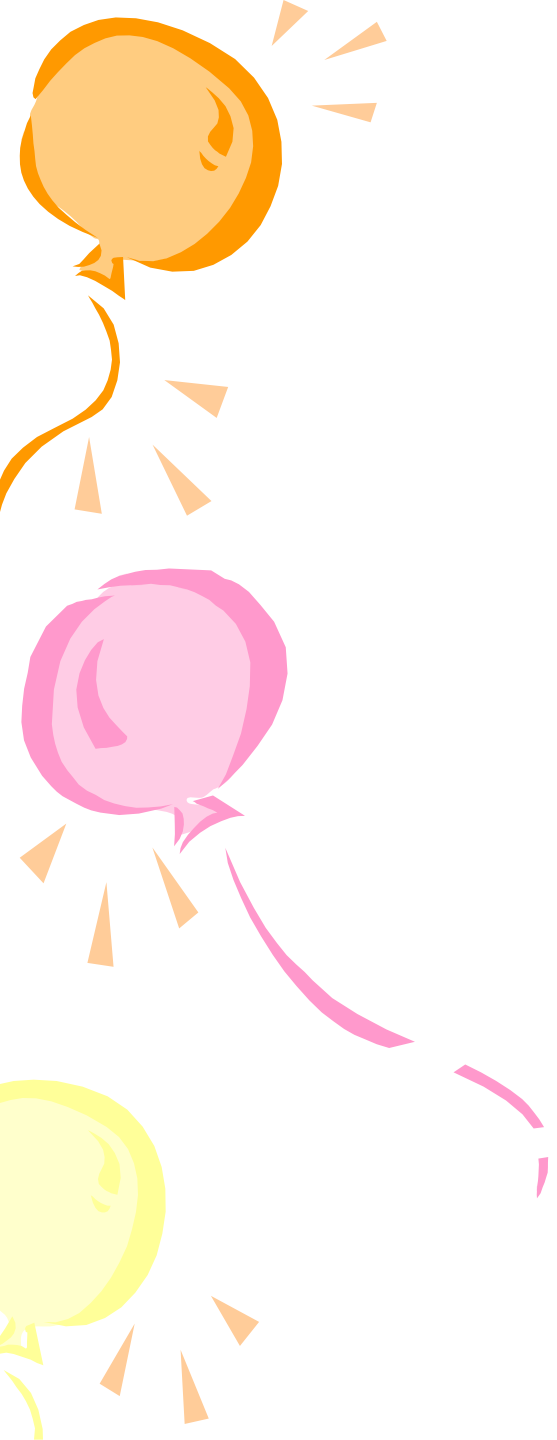
foggy



[w]

warm

windy



[p]

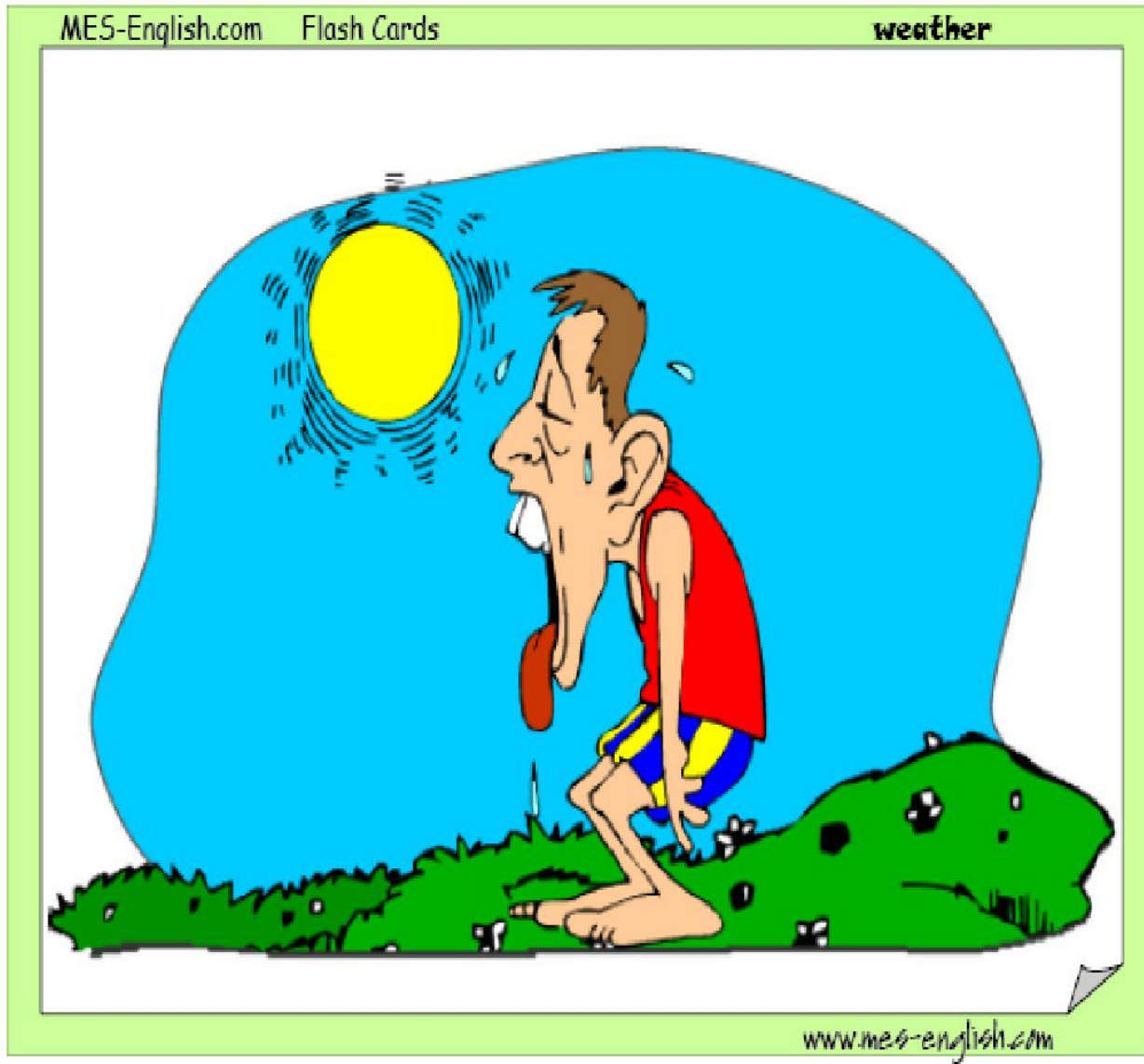
frosty

foggy

hot

Hot

**It's
hot.**



Cold

It's
cold.

MES-English.com Flash Cards

weather

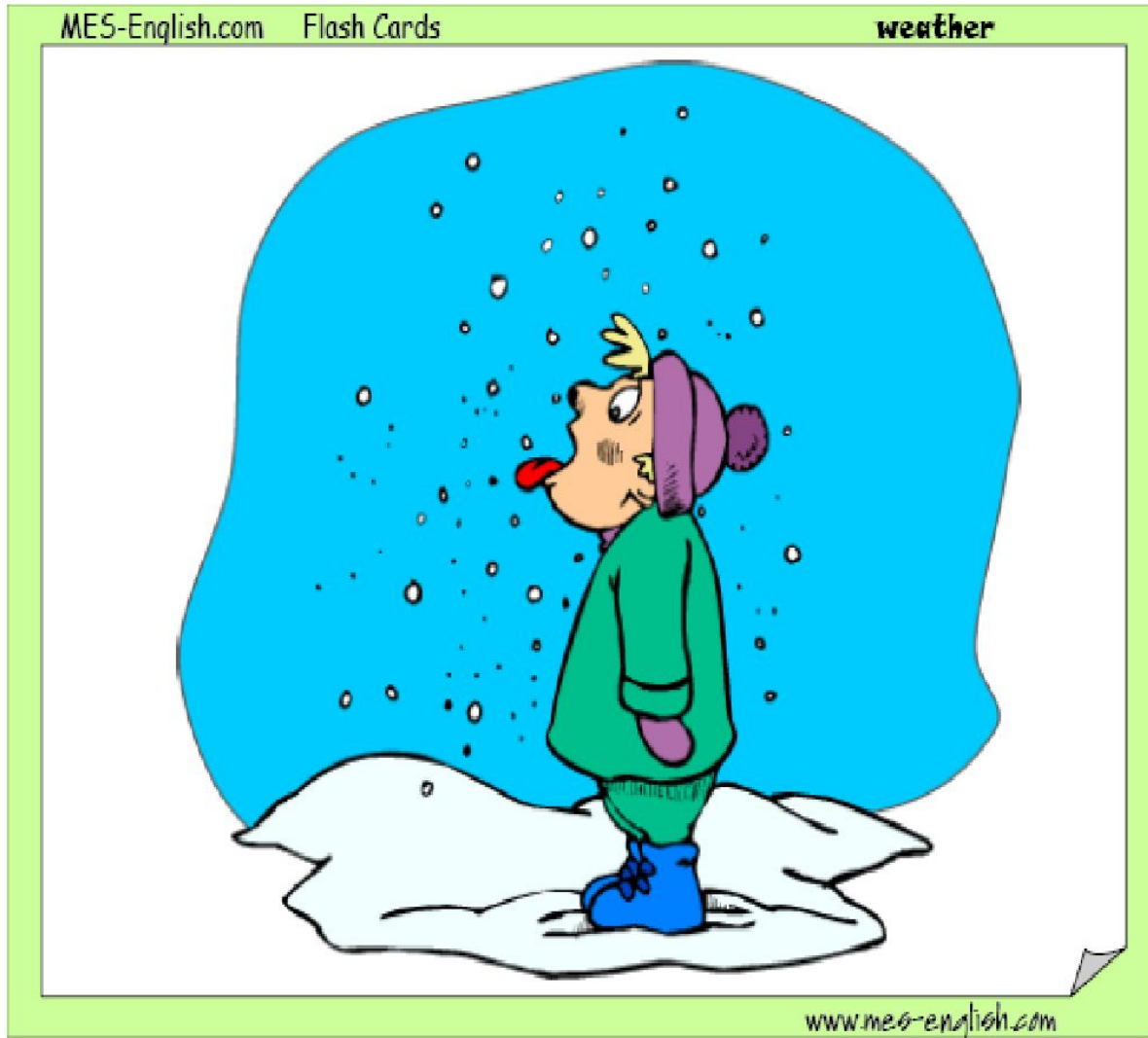


www.mes-english.com

Snowy

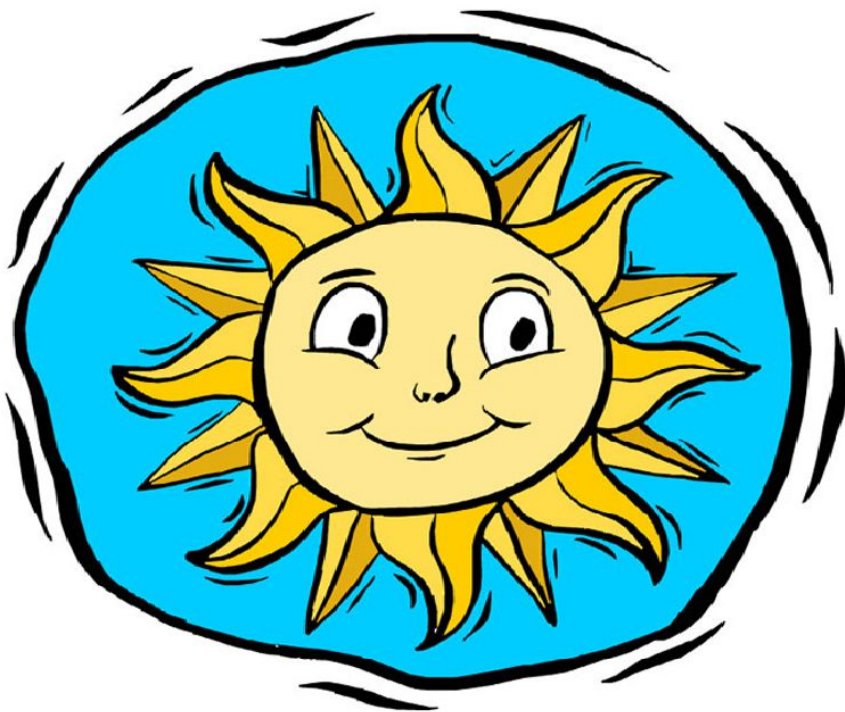
It's

snowy.



Sunny

**It's
sunny.**



Windy

**It's
windy.**

MES-English.com Flash Cards

weather



www.mes-english.com



Rainy

**It's
rainy.**



Stormy

It's stormy.



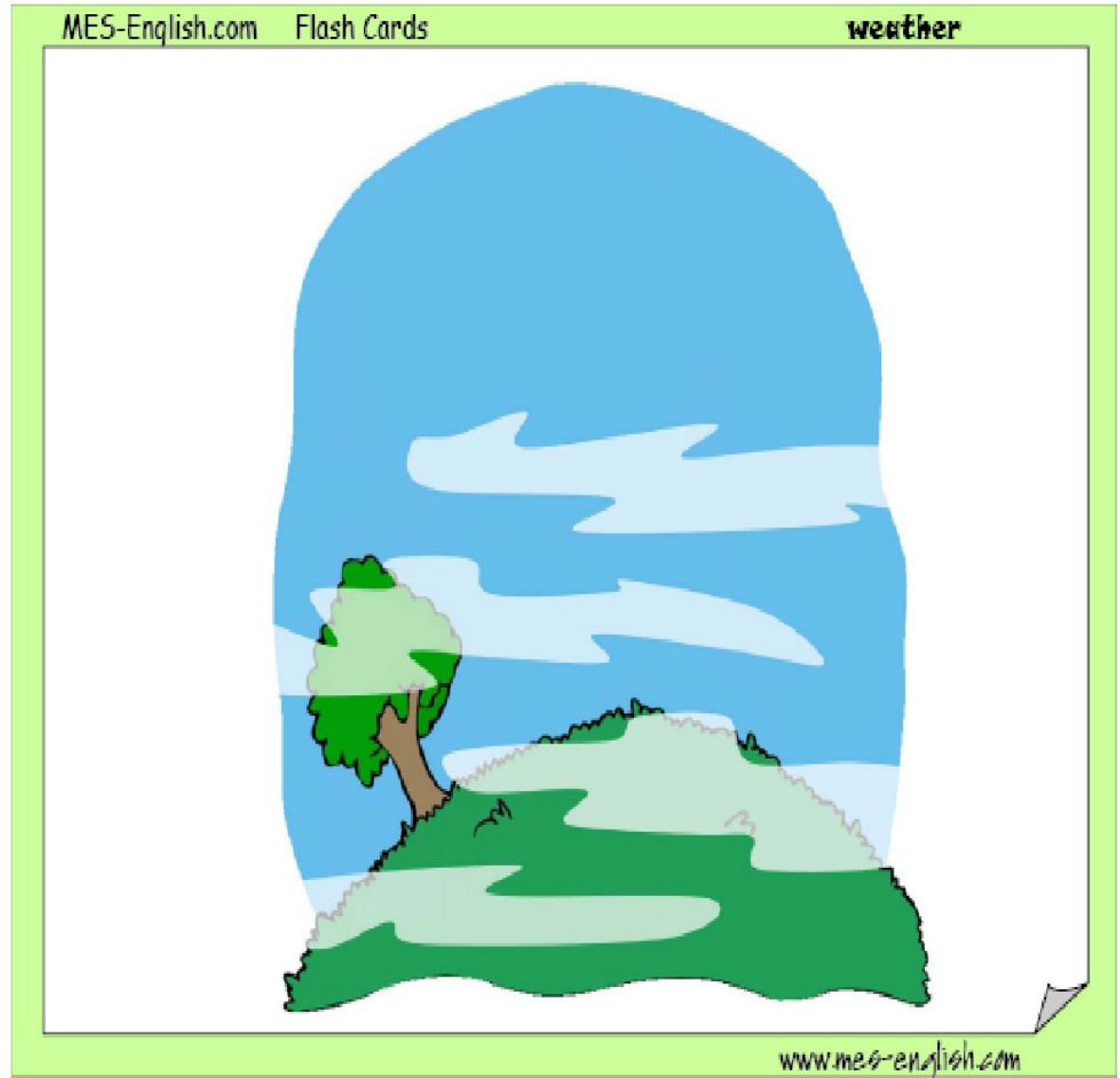
Cloudy

**It's
cloudy.**



Foggy

**It's
foggy.**





**I like summer because
it is sunny.**





**I like... because
it is...**





Read the text and answer
the question

- 1: What is the weather like in winter?
 - 2: What is the weather like in spring?
 - 3: What is the weather like in summer?
 - 4: What is the weather like in autumn?
- 
- 



What is the weather like in
your region?

● In winter it's...



● In spring it's...


● In summer it's...



● In autumn it's...



What is the winter
like in Scotland?



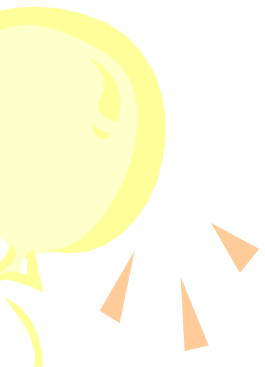
What is the winter
like in England?





Home task

- 
- **AB ex. 2, p.61**



Choose the drawing that reflects your
spirits

