



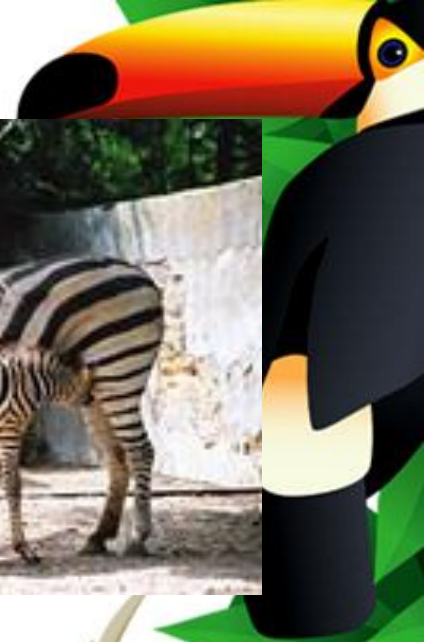
Spotlight 4  
module  
4,lessonmodule  
4,lesson 8a





# AT THE ZOO

<http://learningapps.org/display?v=pb1ucp5q201>





**Tall**

**monkey**

**Silly**

**giraffe**

**Clever**

**whale**

**Little**

**lizard**

**Lazy**

**seal**

**Big**

**dolphin**



# Which animal is cleverer?

- a mouse
- a dolphin



Which animal has got a shorter tail?

- a kangaroo
- a sheep



Which animal is bigger?

- a whale
- a hippo



Which animal is taller?

- a giraffe
- an elephant



Which animal is  
thinner?

- a seal
- a lizard





# Учимся сравнивать

small + er = smaller than

маленький + суффикс = меньше  
чем

big - bigger

happy - happier

nice - nicer

# Comparatives

(Сравнительная степень

прилагательных)

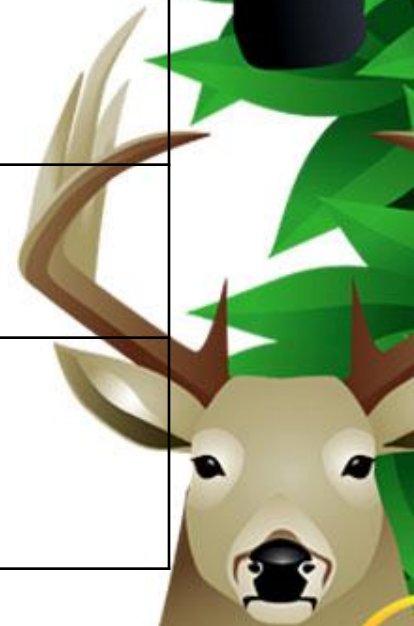
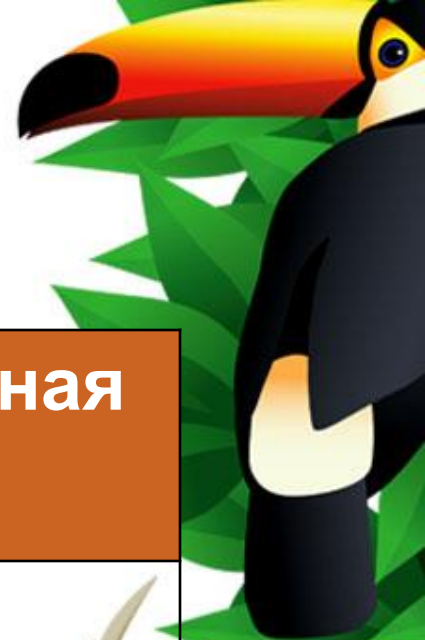
Прилагательные

Сравнительная  
степень

small

big

busy



# Comparatives

(Сравнительная степень

прилагательных)

Прилагательные

Сравнительная  
степень

small

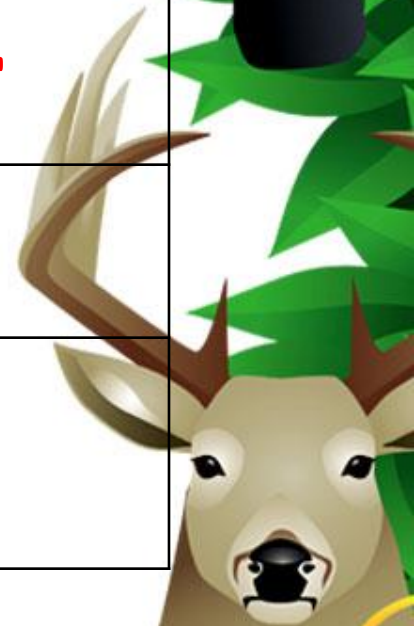
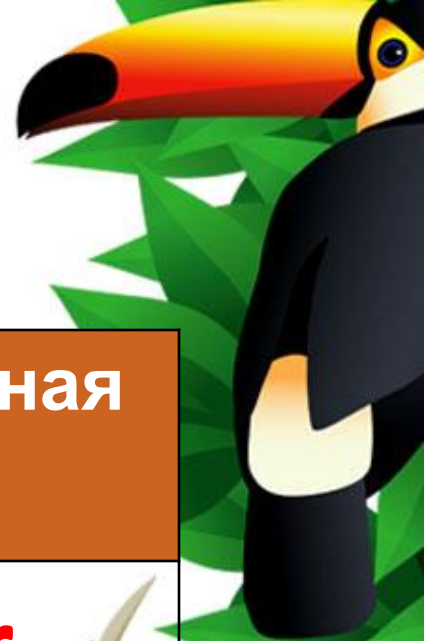
smaller

big

bigger

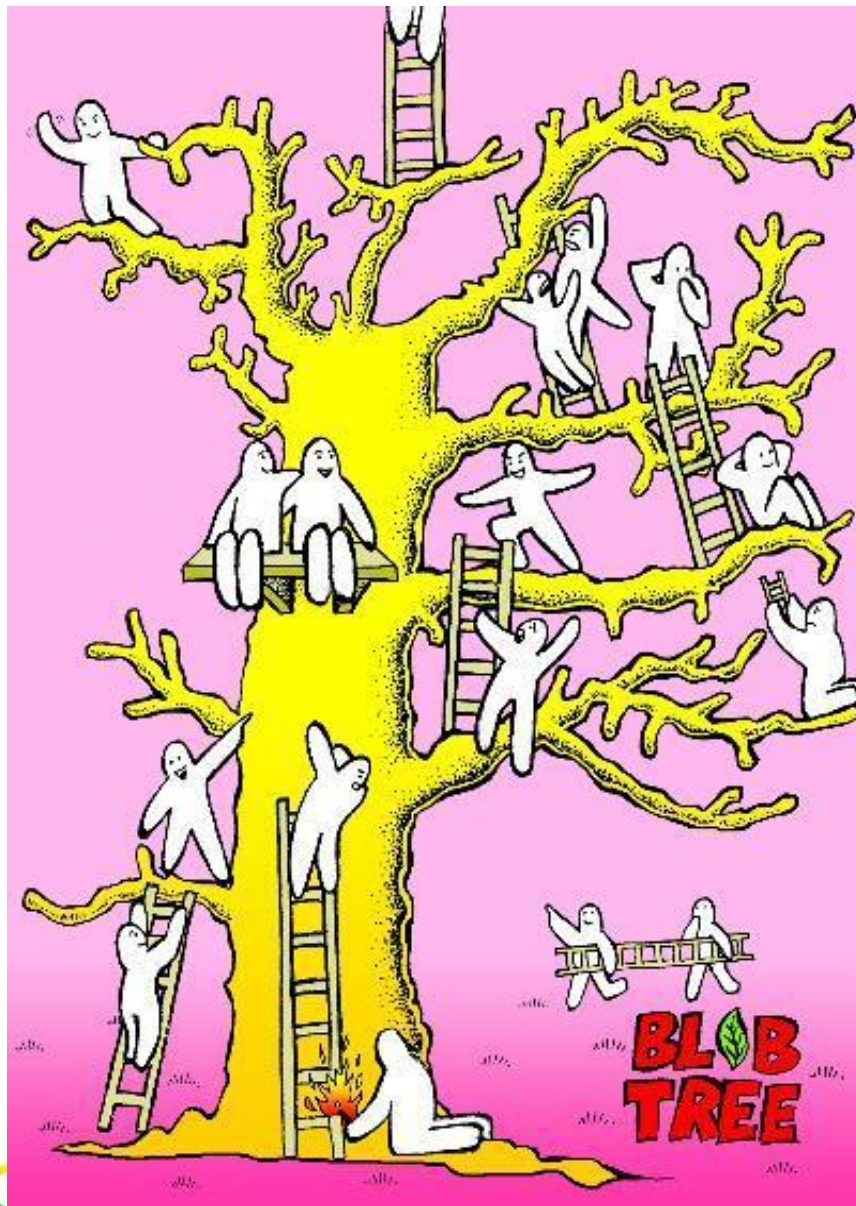
busy

busier





Card 1	
Task 1	
<b>Fill in the table:</b> smaller happier cheaper, better, hotter.	
small	
happy	
cheap	
good	
hot	
Card 2	
Check your answers!	
Task 1	
<b>small</b>	<b>smaller</b>
<b>happy</b>	<b>Happier</b>
<b>cheap</b>	<b>cheaper</b>
<b>good</b>	<b>Better</b>
<b>hot</b>	<b>hotter</b>



# Home Work:





**I am fine**



**I am so – so**

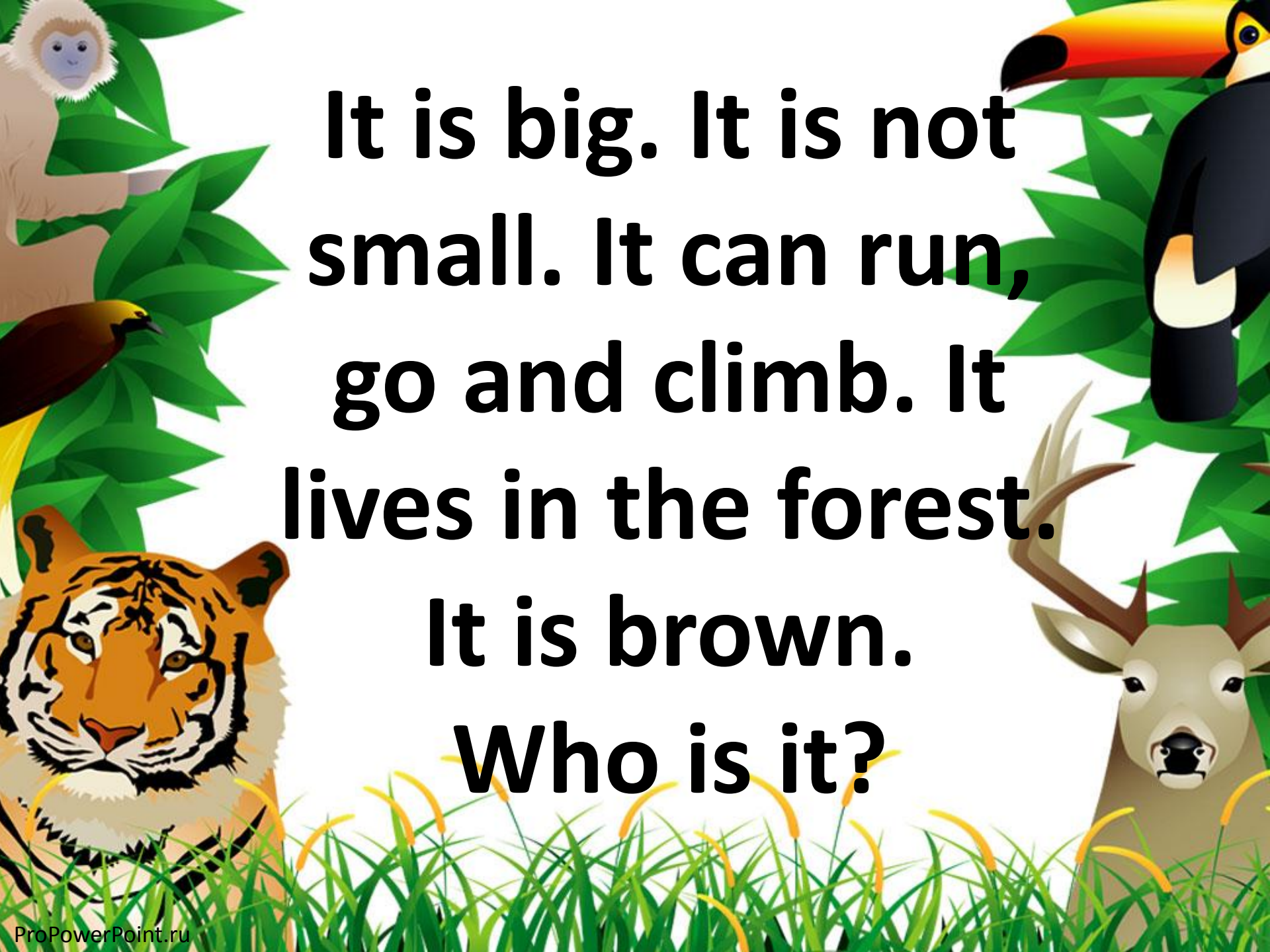


**I am bad**









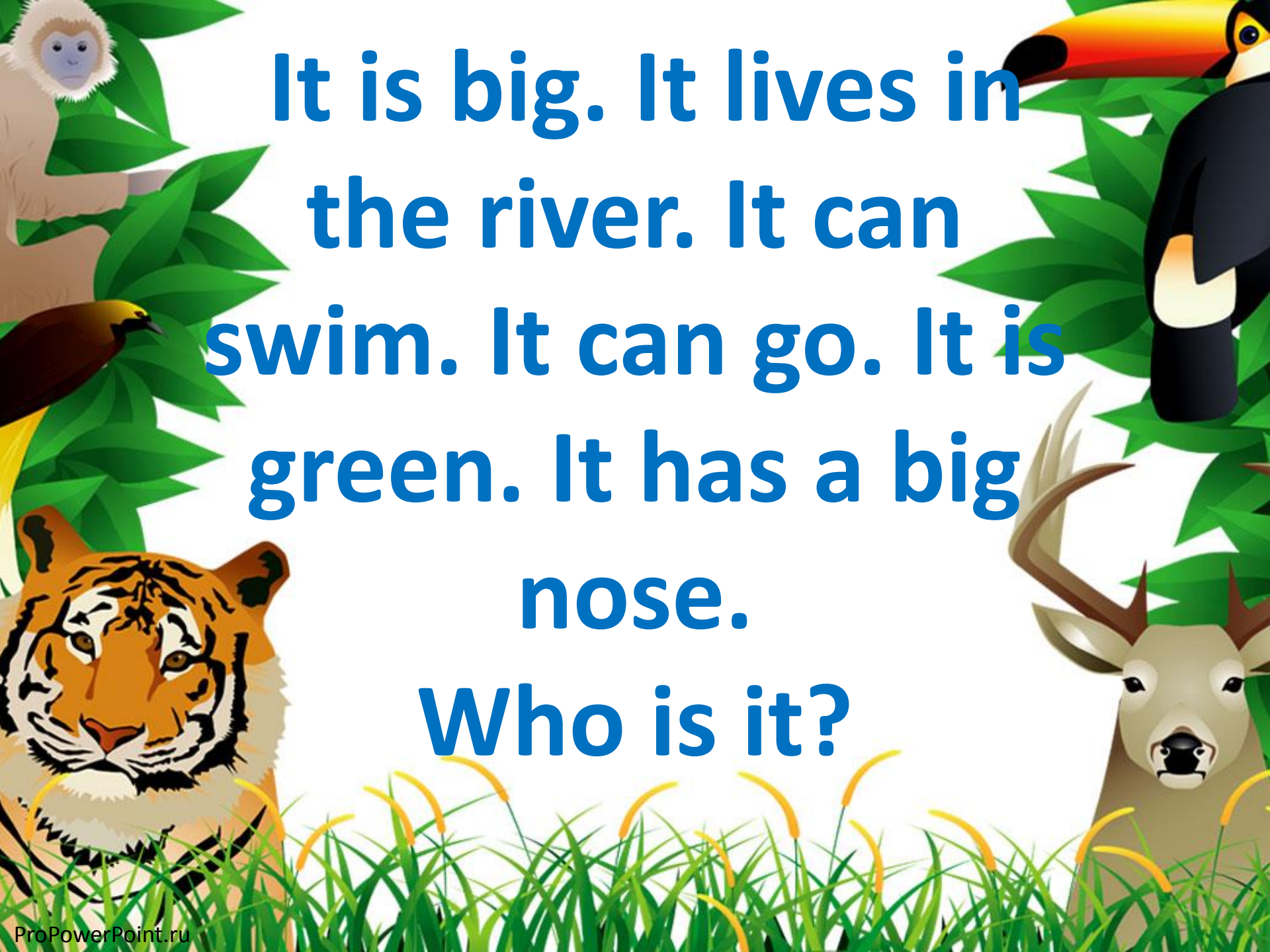
**It is big. It is not  
small. It can run,  
go and climb. It  
lives in the forest.**

**It is brown.**

**Who is it?**

**It is not small. It is big.  
It can run and go. It  
can't jump. It can't fly.  
It is grey. It has a big  
nose and big ears. It  
lives in the jungle.  
Who is it?**





**It is big. It lives in  
the river. It can  
swim. It can go. It is  
green. It has a big  
nose.**

**Who is it?**