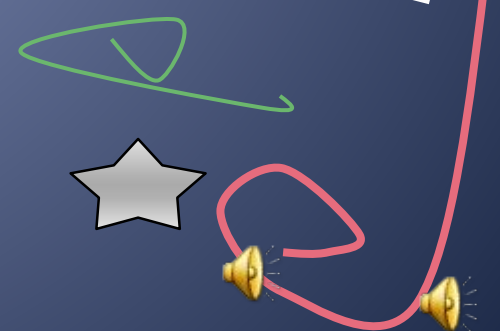
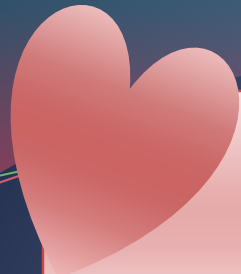




# ST. VALENTINE'S DAY

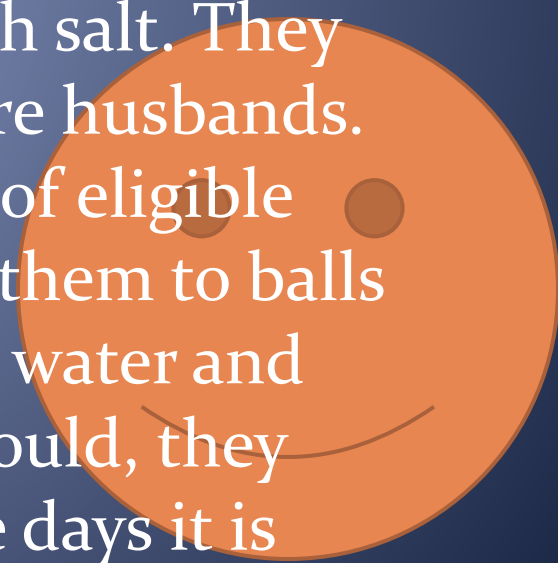
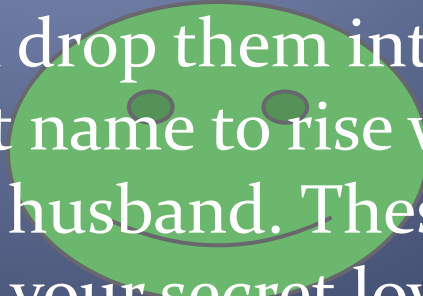


- 
- *This holiday doesn't have a deep religious history. Its history is very romantic. The holiday got its name in honor of the Christian martyr Valentine sentenced by Roman pagans to death. In the III century A.D. the Roman Emperor Claudius edited a decree forbidding marriages. He*
- 

- **The traditions of this holiday**

- **Great Britain**

- In Great Britain on the eve of St. Valentine's Day, women used to pin four bay leaves to the corner of their pillow and then eat boiled eggs with salt. They believed they would dream of their future husbands. Another custom was to write the names of eligible young men on pieces of paper and stick them to balls of clay. They would then drop them into water and watch and wait. The first name to rise would, they believed, be their future husband. These days it is more customary to send your secret love an unsigned

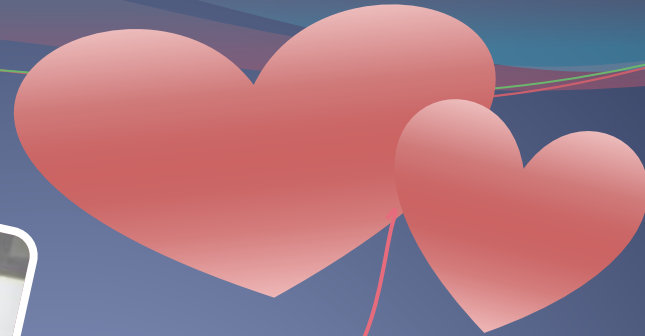


# True or False?

- St. Valentine's Day is 14 February.
- This is the festival of flowers and spring.
- One of the earliest popular symbols of the day is Cupid.
- People of all ages love to send and receive telegrammes on St. Valentine's Day.
- You can sign St. Valentine card "Your Secret Admirer"

St. Valentine's Day is  
14 February.





● **This festival of love and fun is celebrated by a lot of people.**



One of the earliest popular symbols of the day is Cupid.



подарок

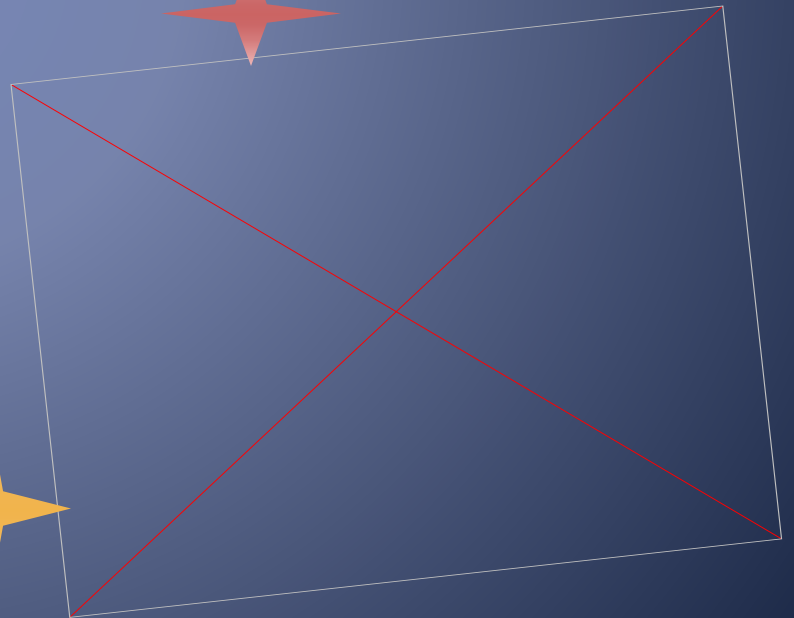


- People of all ages love to send and receive “a valentine” on St. Valentine’s Day.





● You can sign  
St. Valentine  
card “Your  
Secret  
Admirer”



# True or False?

- St. Valentine's Day is 14 February. (True)
- This is the festival of flowers and spring. (False)

● One of the earliest popular symbols of the day is Cupid. (True)

● People of all ages love to send and receive telegrammes on St. Valentine's Day. (False)

● You can sign St. Valentine card "Your Secret Admirer". (True)



