

# IN THE COUNTRY AND IN THE CITY



# ИМЕНА ПРИЛАГАТЕЛЬНЫЕ ОБРАЗУЮТ ДВЕ СТЕПЕНИ СРАВНЕНИЯ:

- Сравнительную (*The Comparative Degree*)
- Превосходную (*The Superlative Degree*)
- Основная форма прилагательного не выражает сравнения и называется *положительной степенью* (*The Positive Degree*)

Big - bigger - the biggest

Small - smaller - the smallest

Cold - colder - the coldest

Strong - stronger - the  
strongest

Warm - warmer - the warmest

## ИСКЛЮЧЕНИЯ:

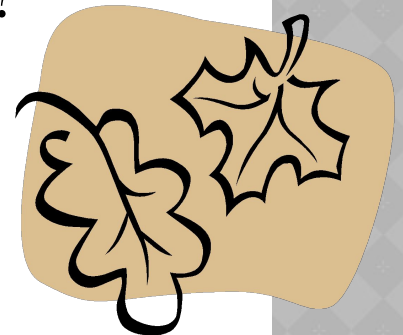
- good - better - the best
- bad - worse - the worst
- many/much - more - the most
- little - less - the least

# ЗАПОЛНИ ПРОПУСКИ

<b>big</b>	...	<b>(the) biggest</b>
<b>happy</b>	<b>happier</b>	...
...	<b>taller</b>	<b>(the) tallest</b>
<b>cold</b>	...	<b>(the) coldest</b>
<b>nice</b>	<b>nicer</b>	<b>(the) ...</b>
<b>kind</b>	<b>kinder</b>	...
...	<b>slimmer</b>	<b>(the) slimmest</b>
<b>large</b>	...	...

# ВЫБЕРИ НУЖНОЕ ПРИЛАГАТЕЛЬНОЕ

1. John is **good/ better/ the best** pupil in our school.
2. The weather is **good/ better/ the best** today than on Sunday.
3. I like ice cream **much/ more/ the most** than cakes.
4. Autumn is **bad/ worse/ the worst** season for me.
5. There are **many/ more/ the most** posters on the wall.
6. Who is **good/ better/ the best** pupil in the class?
7. What is **bad/ worse/ the worst** day for you?



# ВЫБЕРИ ПРАВИЛЬНЫЙ ВАРИАНТ ОТВЕТА

1. Which is the biggest city?

Moscow

London

2. Which is the largest country?

Great Britain

the USA

3. Which is the warmest season?

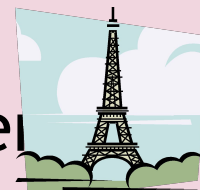
spring

winter

4. Which is the shortest month?

May

August



Belgium

Paris

Russia

France

summer

autumn

February

January



**Country is better the city because.....**

**City is better the country  
because.....**





# You worked



**Excellen  
t**



**Good**



**Not very  
good**