

# New Zealand

*Through the country.*



# The geographical position of NEW ZEALAND





**New Zealand** is a country in the south-western Pacific Ocean (the North Island and the South Island and numerous smaller islands.) The Māori named New Zealand *The Land of the Long White Cloud*. New Zealand is separated from Australia to the northwest by the Tasman Sea, The population is the Māori . Elizabeth II, as the Queen of New Zealand, is the Head of State and, in her absence, is represented by a Governor-General. The Queen 'reigns but does not rule.' She has no real political influence, and her position is symbolic. Political power is held by the democratically elected Parliament of New Zealand under the leadership of the Prime Minister, who is the Head of Government.





# The nature of New Zealand



# GEOGRAPHICAL PECULIARITIES.

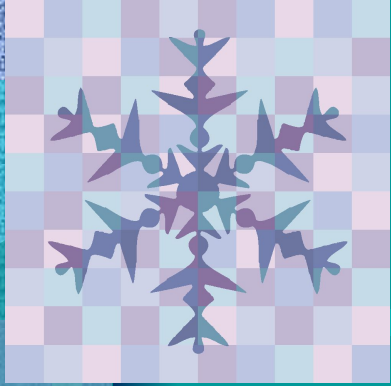
- NEW ZEALAND IS FAMOUS FOR ITS GEYSERS AND VOLCANOES.
- IT IS NORTH ISLAND WHERE YOU CAN FIND BIG VOLCANOES AND OLD GEYSERS.
- AS FOR SOUTH ISLAND , IT IS VERY BEAUTIFUL WITH ITS MOUNTAINS, LAKES SAND FIORDS.



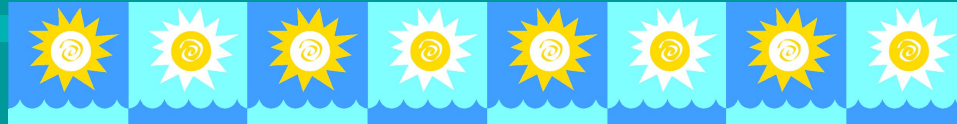
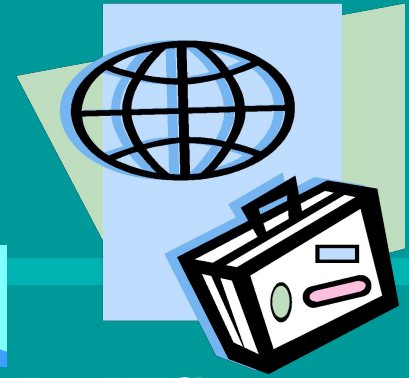


# RIVERS AND MOUNTAINS.

- NEW ZEALAND IS A MOUNTAINOUS COUNTRY.
- THE SOUTHERN ALPS IS THE HIGHEST IN THE COUNTRY.
- THE MOUNTAINS IN NORTH ISLAND ARE NOT SO HIGH.
- WE CAN FIND A LOT OF LAKES IN NORTH ISLAND .
- ALL THE RIVERS OF NZ ARE SHORT.



# CLIMATE



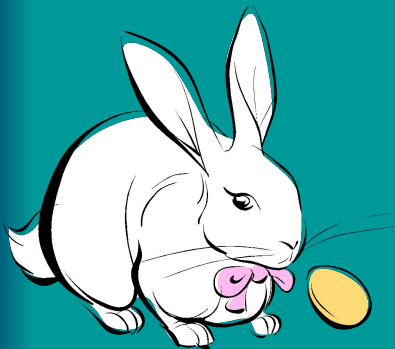
- NEW ZEALAND IS FAMOUS FOR ITS CLIMATE WHICH IS PLEASANT THE WHOLE YEAR.
- THERE IS NO GREAT DIFFERENCE BETWEEN WINTER AND SUMMER.
- IT IS NEVER COLD AND HOT, THAT'S WHY NZ IS VERY ATTRACTIVE FOR TOURISTS.







- THE CLIMATE WITH RAINFALLS ALL THE YEAR ROUND IS VERY FAVOURABLE FOR SHEEP-FARMING, CATTLE-FARMING AS WELL AS GROWING FRUIT, VEGETABLES AND FLOWERS.









# THE WILDWORLD OF NEW ZEALAND

- Kiwi – киви ( птица и фрукт )
- Weka – небольшая птица
- Какаро – новозеландский попугай
- Кеа – крупный зелёный попугай
- Weta – кузнечик – гигант ( достигает веса 30 грамм )





## The Flag of New Zealand

is a blue Union Flag in the canton, and four red stars with white borders to the right.

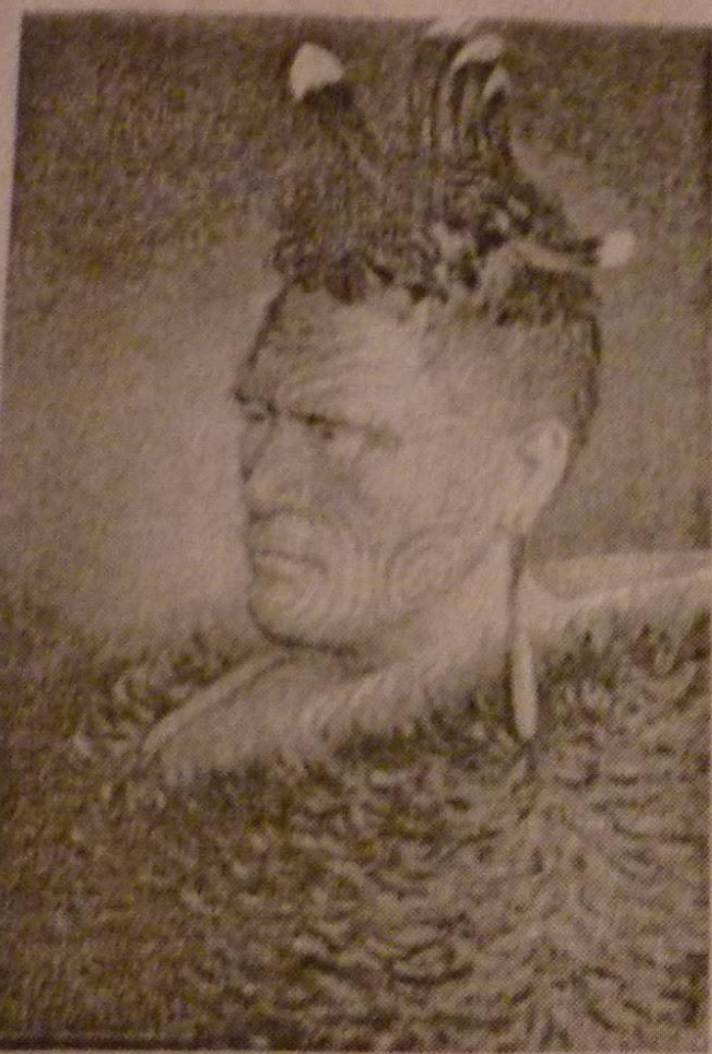
The flag and the colours are Red, Blue and White. Proportion and colours are identical to the Union Flag.



The symbol of New Zealand is **kiwi**, the native bird. It lives in wet parts of the thick New Zealand bush and comes out only at night to find food. Small children are often called kiwis. In elementary schools you may see posters with the words: "Be a tidy Kiwi".

The New Zealand and Australian flags are very much alike. With the British flag in the top left hand corner the Australians show the stars of the Southern Cross in white on a blue field while the New Zealanders show the stars in





The chieftain of Maory  
ribe.

New Zealand is a country where we can meet many aborigines. The **Maoris** make up eight per cent of the population. They are famous for their folk-songs and wood-work.

The tribes of **Maori** [<sup>1</sup>mauri] are well-known all over the world. The representatives of Polynesian race had lived on the islands of New Zealand for hundreds of years before the white people came there. They are often called Vikings of Sunrise.

Speaking about New Zealand we can't but mention the

# BIG CITIES



- WELLINGTON IS THE CAPITAL OF THE COUNTRY.
- IT HAS BEEN THE CAPITAL SINCE 1865.
- THE POPULATION IS ABOUT 350,000 INHABITANTS.
- IT LIES AMONG HILLS ON THE WESTERN SIDE OF A NATURAL HARBOUR.
- IN 1840 THE 1<sup>ST</sup> WHITE SETTLERS ARRIVED FROM BRITAIN AND CALLED THEIR SETTLEMENT BRITANNIA.
- LATER IT BECAME WELLINGTON.
- IT WAS CHOSEN AS THE CAPITAL IN PREFERENCE TO AUCKLAND, WHICH IS LARGER BUT LESS CENTRAL.





- AUCKLAND IS THE LARGEST CITY SITUATED ON NORTH ISLAND.
- ITS POPULATION IS 750,000 INHABITANTS.
- IT IS A LARGE PORT.



- THERE ARE TWO LARGE CITIES IN SOUTH ISLAND: CHRISTCHURCH AND DUNEDIN.



- NEW ZEALAND IS CALLED “BRITAIN OF THE PACIFIC”



- WHY NOT TRAVELLING TO THIS EXOTIC COUNTRY?
  - IT IS WAITING FOR YOU !

