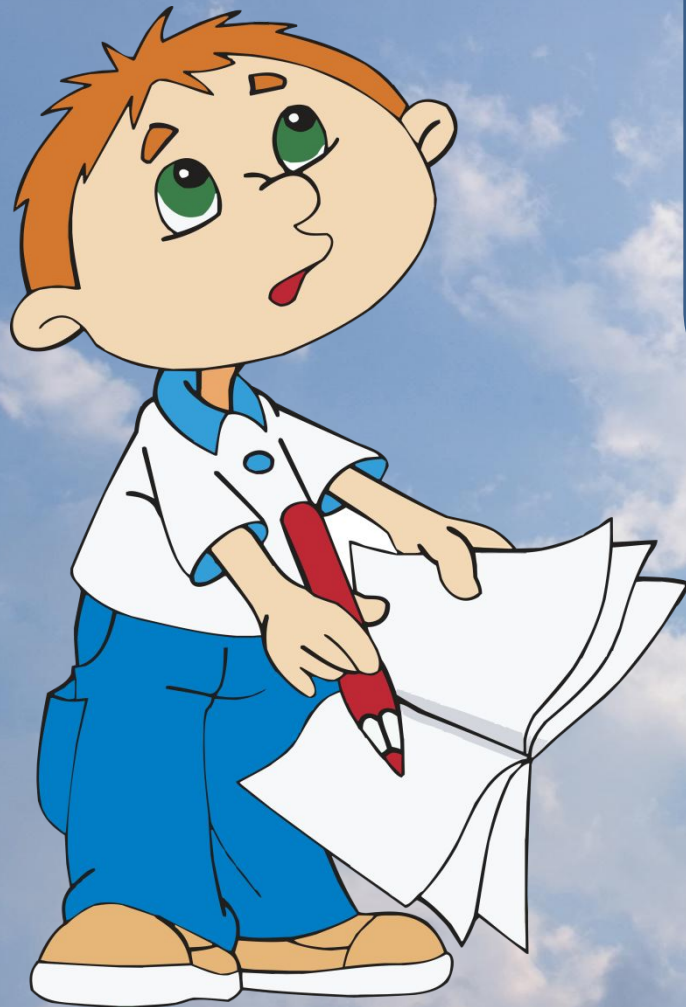




Интерактивный кроссворд “Birds”

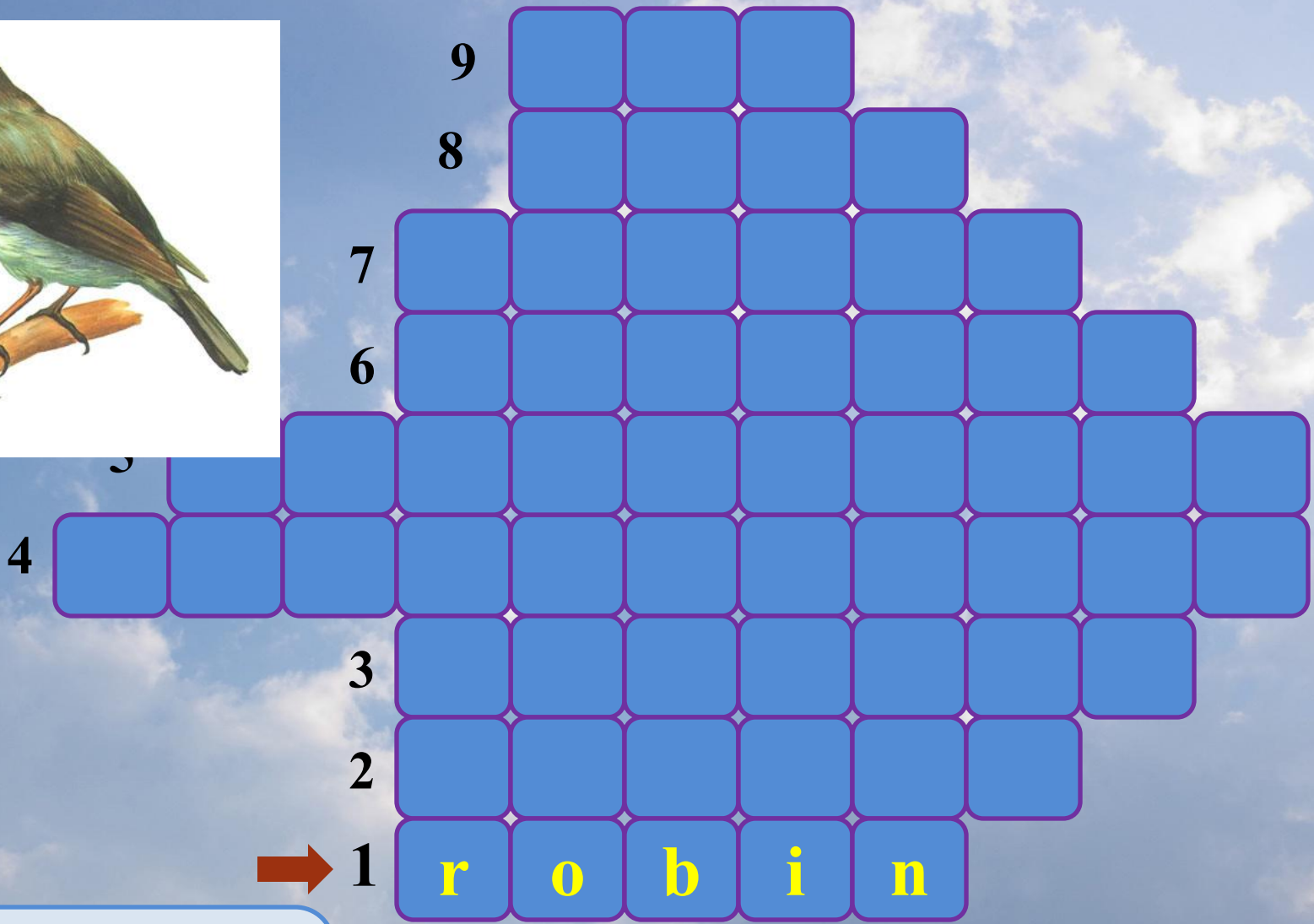
Английский язык 6-7





Children, help Misha to make project about birds. Do you know what birds live in our forests and towns?





**a small, brown bird
with red chest**





9

8

7

6

5

4

3

2 → m a g p i e

1 r o b i n

A crossword puzzle grid with 9 rows and 10 columns. The words 'robin' and 'magpie' are filled in. The letters 'r', 'o', 'b', 'i', 'n' are yellow, and 'm', 'a', 'g', 'p', 'i', 'e' are white. An orange arrow points to the start of the second row.

a noisy black and white bird with a long tail





A crossword puzzle grid with 9 rows and 10 columns. The grid is filled with blue squares. The words are:

- Row 1: r o b i n
- Row 2: m a g p i e
- Row 3: s w a l l o w
- Row 4: (empty)
- Row 5: (empty)
- Row 6: (empty)
- Row 7: (empty)
- Row 8: (empty)
- Row 9: (empty)

Row numbers 1-9 are on the left. Column numbers 1-10 are on top. An arrow points to the start of row 3.

a small bird with long, pointed wings and a tail with two points





4

n i g h t i n g a l e

3

s w a l l o w

2

m a g p i e

1

r o b i n

a small brown bird
which sings very well





4

woodpecker
nigh t i n g a l e
s w a l l o w
m a g p i e
r o b i n

a bird with a strong bill
which climbs tree trunks to
find insects and drums on
dead wood.





9

8

7

6 **s p a r r o w**

5 **w o o d p e c k e r**

4 **n i g h t i n g a l e**

3 **s w a l l o w**

2 **m a g p i e**

1 **r o b i n**

**a small, brown bird
which is common in
towns and cities**





**a grey or white bird
which often lives on
buildings in towns**





9											
8		c	r	o	w						
7	p	i	g	e	o	n					
6	s	p	a	r	r	o	w				
5	w	o	o	d	p	e	c	k	e	r	
4	n	i	g	h	t	i	n	g	a	l	e
3	s	w	a	l	l	o	w				
2	m	a	g	p	i	e					
1	r	o	b	i	n						

a large black bird that makes a loud voice





a bird that has large eyes and hunts small animals at night



Источники

Фон

Сова

Ласточка

Дятел

Соловей

Малиновка

Голубь

Сорока

Ворона

Воробей

Титульный
слайд

