

The background of the slide is a sunburst pattern with rays emanating from the bottom center, transitioning from a bright yellow at the top to a darker orange at the bottom.

«A lucky chance»
a quiz game

Test №1

Quick questions



**What is the capital
of Great Britain?**



**What is the capital
of Great Britain?**



London

**Who is the president
in the USA now?**



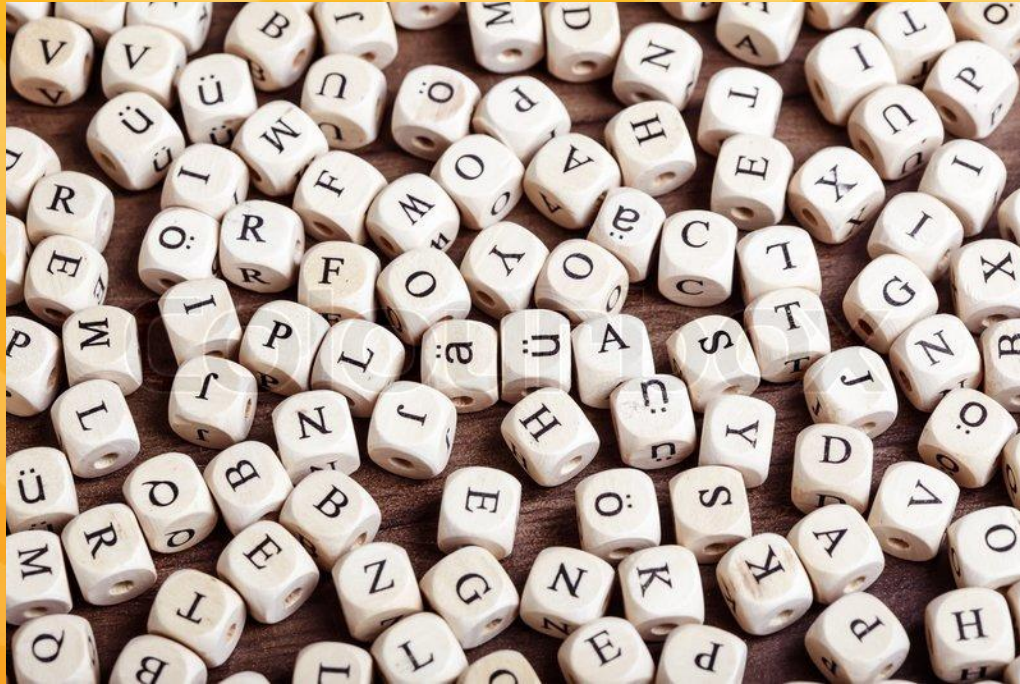
**Who is the president
in the USA now?**



Donald Trump

Test №2

Unscramble!



eHwlenaol

eHwlenaol



Halloween

The background of the image is a sunburst pattern. It consists of numerous thin, radiating lines that originate from a central point at the bottom and spread outwards towards the top. The lines are colored in various shades of yellow and orange, creating a bright, energetic effect. The overall shape is roughly rectangular, with the sunburst pattern filling most of the space.

nlEishg

nlEishg



English

The background of the image features a series of yellow and orange rays radiating from the bottom center, creating a sunburst effect. The rays are of varying lengths and angles, filling the entire frame.

coKIC

coklc

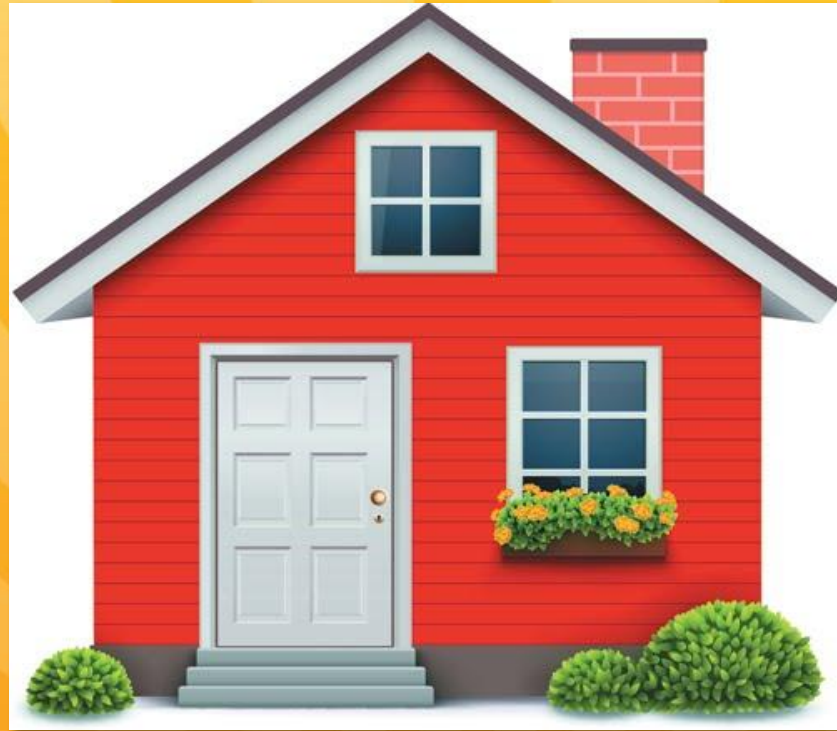


Clock

The background of the image is a sunburst pattern. It consists of numerous thin, radiating lines that originate from a central point at the bottom and spread outwards towards the top. The lines are colored in various shades of yellow and orange, creating a warm, glowing effect. The overall shape is roughly rectangular, with the sunburst pattern filling most of the space.

oseHu

ouseHu



House

Test №3

Proverbs



The background of the slide features a sunburst pattern of radiating lines in various shades of yellow and orange, emanating from a central point at the bottom. The lines are thicker in the center and become thinner towards the edges, creating a sense of depth and light.

Live and learn

Live and learn



Век жизни — век
учись

The background of the image is a sunburst pattern. It consists of numerous thin, radiating lines that originate from a central point at the bottom and spread outwards towards the top. The lines are colored in various shades of yellow and orange, creating a bright, energetic effect. The overall shape is roughly rectangular, with the sunburst pattern filling most of the space.

**Better late
than never**

**Better late
than never**



**Лучше поздно,
чем никогда**



**A friend in need is
a friend indeed**

**A friend in need is
a friend indeed**



Дру

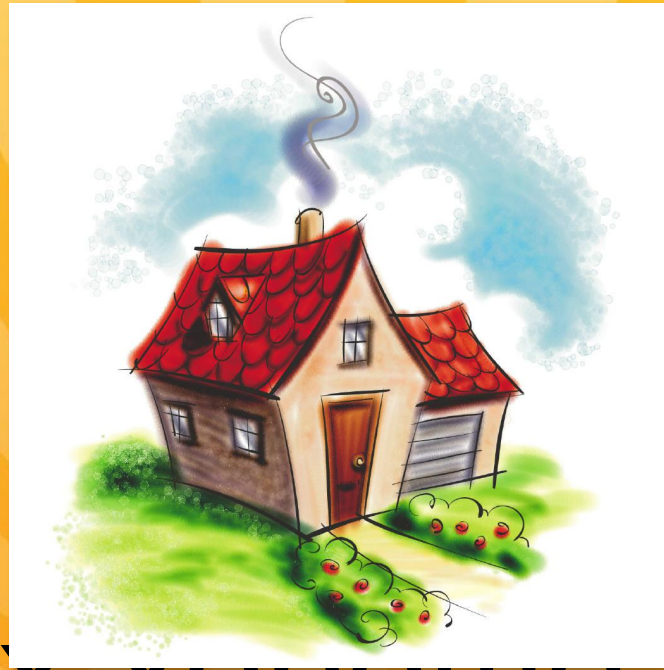
ся

в беде

The background of the image is a sunburst pattern. It consists of numerous thin, radiating lines that originate from a central point at the bottom and spread outwards towards the top. The lines are colored in various shades of yellow and orange, creating a bright, warm, and energetic feel. The overall shape of the sunburst is roughly triangular, with the point at the bottom center.

**East of West, home
is best**

**East of West, home
is best**



**В гостях хорошо, а дома
- лучше**

Test №4

the Extra word



The background features a sunburst pattern with rays radiating from the bottom center. The rays are composed of alternating bands of light yellow and a slightly darker yellow, creating a warm, energetic feel.

Tea
coffee
juice
lemon



lemon

The background of the image is a sunburst pattern. It consists of numerous thin, radiating lines that originate from a central point at the bottom and spread outwards towards the top. The lines are colored in various shades of yellow and orange, creating a warm, bright effect. The overall shape is roughly rectangular, with the sunburst pattern filling most of the space.

Tree

sun

rain

cold



Tree

Test №5

Questions!



What is the official language in Great Britain?

- a) English**
- b) French**
- c) Russian**
- d) Chinese**

What is the official language in Great Britain?

- **a) English**
- **b) French**
- **c) Russian**
- **d) Chinese**

The capital of Great Britain is ...

- a) Manchester**
- b) Liverpool**
- c) London**
- d) Cardiff**

The capital of Great Britain is ...

- a) Manchester
- b) Liverpool
- c) London
- d) Cardiff

Big Ben is ...

- a) a clock**
- b) a horse**
- c) an animal in the zoo**
- d) a famous name**

Big Ben is ...

- **a) a clock**
- **b) a horse**
- **c) an animal in the zoo**
- **d) a famous name**

England is in ...

- **a) Europe**
- **b) Africa**
- **c) America**
- **d) Asia**

England is in ...

- a) Europe
- b) Africa
- c) America
- d) Asia

**The name of the river in London
is ...**

- a) The Severn**
- b) The Thames**
- c) The Avon**
- d) The Clyde**

**The name of the river in London
is ...**

- **a) The Severn**
- **b) The Thames**
- **c) The Avon**
- **d) The Clyde**

Who is the head of England?

- a) the Queen
- b) the Tzar
- c) the Prime Minister
- d) the President

Who is the head of England?

- a) the Queen
- b) the Tzar
- c) the Prime Minister
- d) the President

That's all!

bwavo



(clappity clappity)

Congratulations!

VERY CONGRATULATIONS



MUCH BALLOON

memes.com

