



ART GALLERIES

BRITISH ARTISTS

The Tate Gallery



The Tate Gallery was opened in 1897.

It consisted of eight rooms, and was intended as a collection of contemporary British painting only.

The Tate Gallery has become the national collection of British painting of all periods, British and foreign modern sculpture.

Among the best painters represented are Hogarth, Constable, William Turner, Thomas Gainsborough etc





William
Hogarth

(1697-
1764)



William Hogarth is one of the greatest English painters. In his pictures he reflected social life and in many of them the beauty of his painting was accompanied by satire.

A shop-girl of ...



The “Marriage-a-la-mode”(Модный брак),
“The Election Entertainment”(Выборы) were
painted to show the life very satirically.





“The Election Entertainment” (Выборы)



In 1742 Hogarth painted “The Graham Children” where he brilliantly used his delicate colours to show the charm of childhood.



**John
Constable
(1776-1837
)**

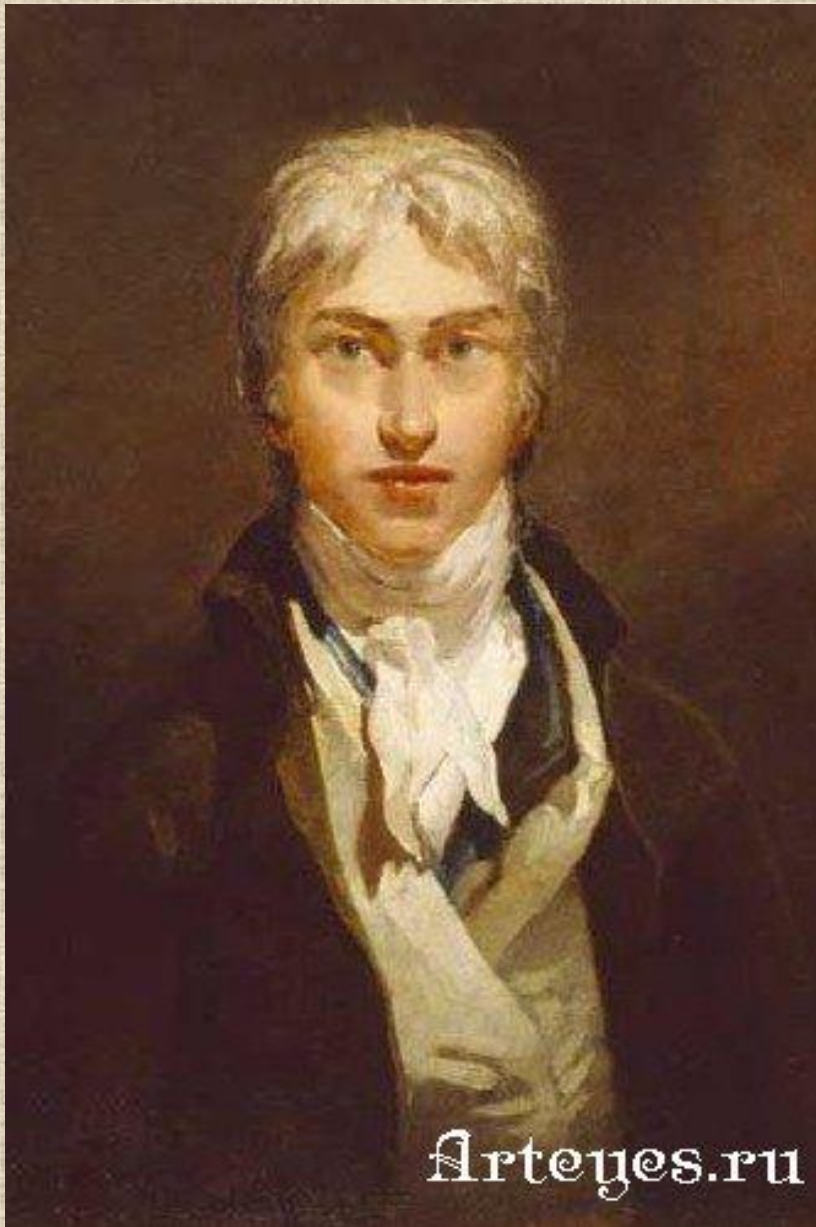


John Constable was fond of the place where he was born and spent his childhood on the river Stour [stue]. He painted the landscape without any changes and the trees or other objects were in his paintings very true to life.



The picture “The Cornfield” was painted in 1824. Constable came from the county of Suffolk, one of the prettiest parts of England and painted its scenery many times.

He said to be the first landscape painter in England.



**William
Turner
(1775-
1851)**

William Turner began his activity in art as a watercolour master. Light and atmosphere were his characteristic feature. Turner is a super colourist.





In 1805 he painted “The Shipwreck”. He showed a terrible disaster at sea. Green was a colour that Turner particularly disliked.



In “Snow Storm” he reflected with the help of snow the idea of survival and even in our days it looks very prophetic. It is considered one of his most original paintings.



He studies colour very seriously and is said to anticipate the art of impressionists and abstract painters of the 20th century.

(The Standing of Sun in the Tuman”)

In his “Rain, Steam and Speed” (1844) he worked much on the colour interrelation.





Thomas Gainsborough
(1727-1788)



Thomas Gainsborough is a very lyrical painter who successfully connected man and nature. A very strong psychologist, he painted mostly women on the background of a scenery.

He liked blue colours best of all.

His portraits are optimistic and the light and shade of colour are in full harmony with the lines.





Thomas Gainsborough
“Sir Robert Andrews and his wife”

Vocabulary

- **Accompany – сопровождать**
- **Colourist– художник-колорист**
- **Impressionist- импрессионист**
- **Intend - намереваться, подразумевать**
- **Interrelation- взаимоотношение**
- **Prophetic- пророческий**
- **Reflect- отражать**