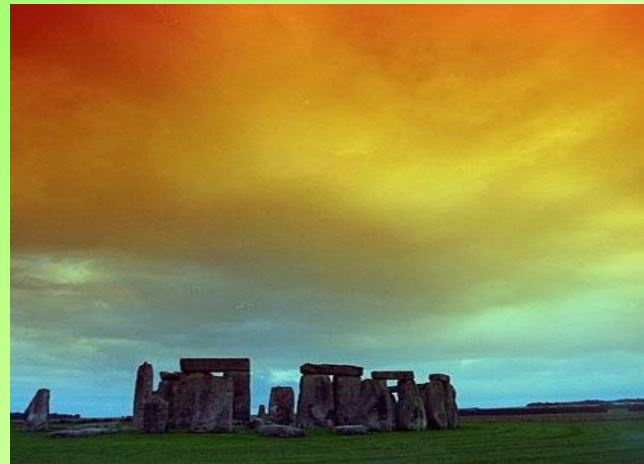


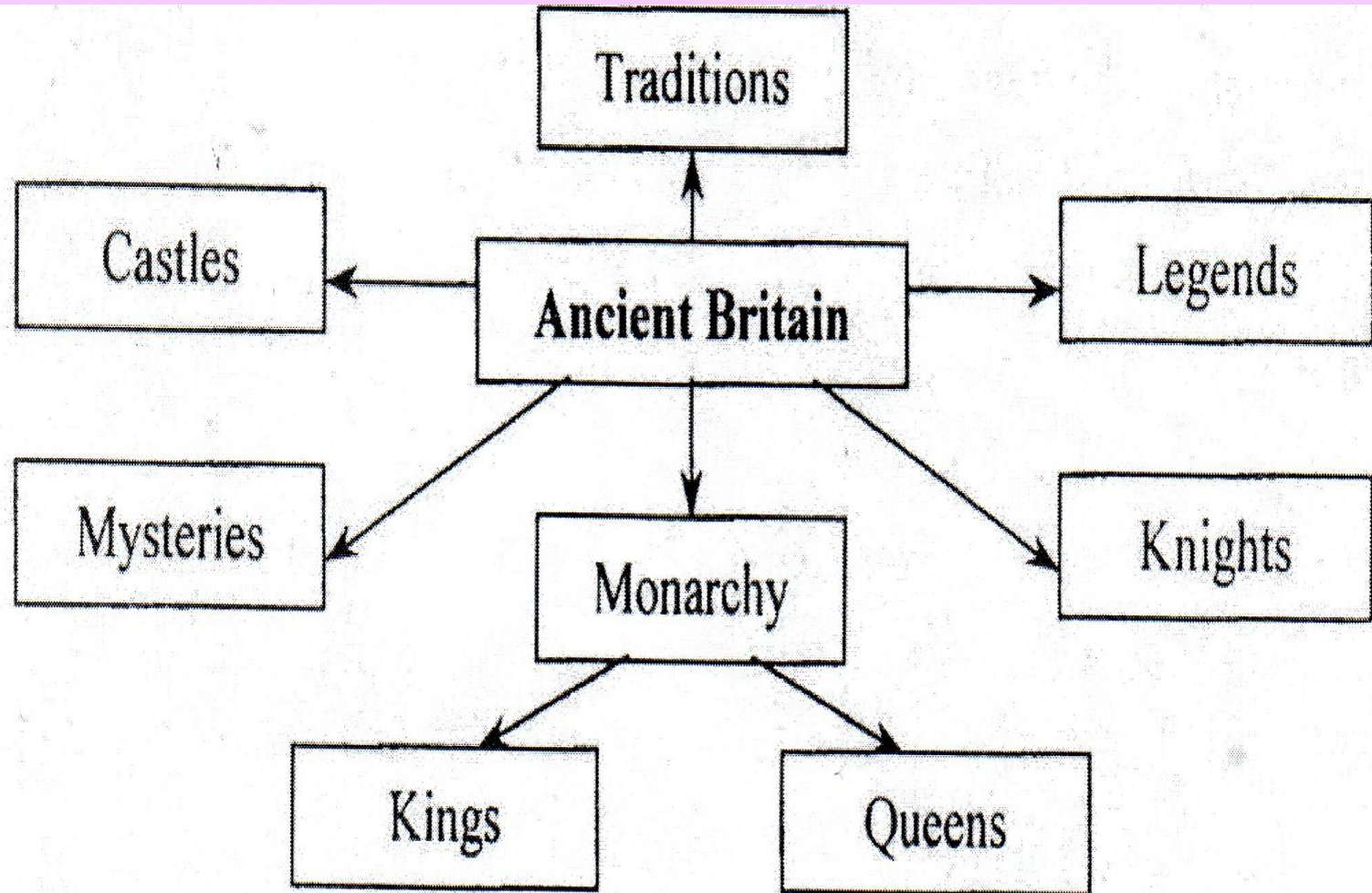
AROUND ANCIENT BRITAIN



Lesson - exploration



The words - associations



Midsummer's Day in Stonehenge

Stonehenge is the biggest stone circles.

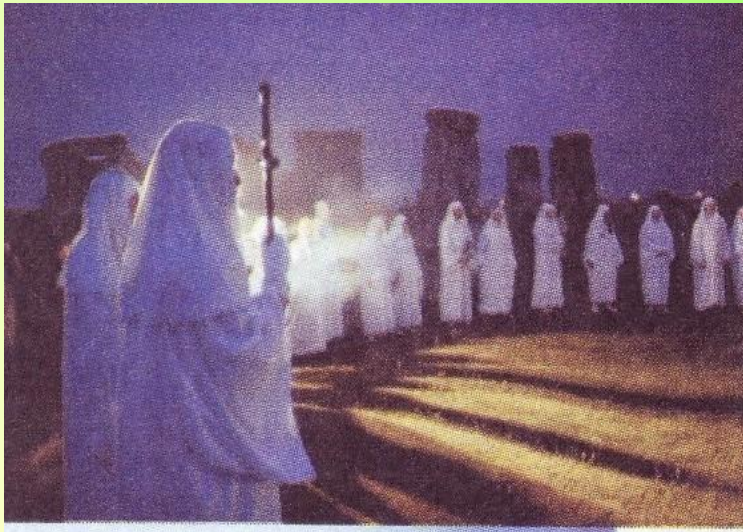
It's a holy place, an ancient god's house.

It's a kind of calendar.

June 24th is the longest day of the year.

We can see Druids festival.

It's a kind of computer.



3

Listen and read.



A Ballad of Stonehenge

Three thousand years before Christ was a child,
England was beautiful, young and wild.
There were people, forests and rivers there,
And the magic stones hung in the air.

The people who brought them were strong and brave,
And under these stones they found their graves.
Where did they come from? Where did they go?
Who were these people? We'll never know.

Was it a temple? An ancient god's house?
Was it a compass for friends from the stars?
They built it five thousand years ago,
But why did they do it? We'll never know.

Now these days are gone and the people are gone,
But the midsummer sunrise still shines on the stone.
And the midwinter sunset still comes with the rain,
And Stonehenge greets them on Salisbury Plain.



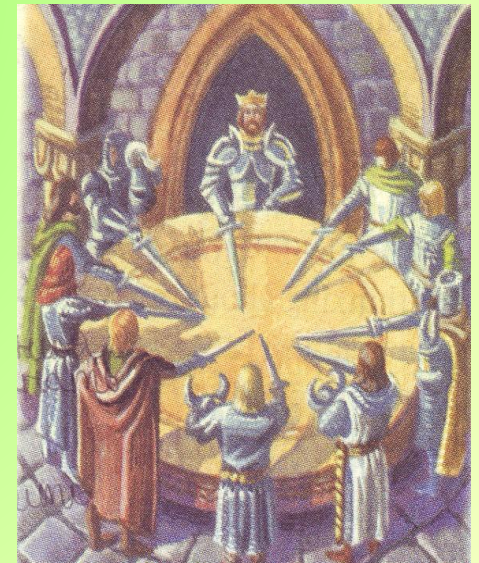
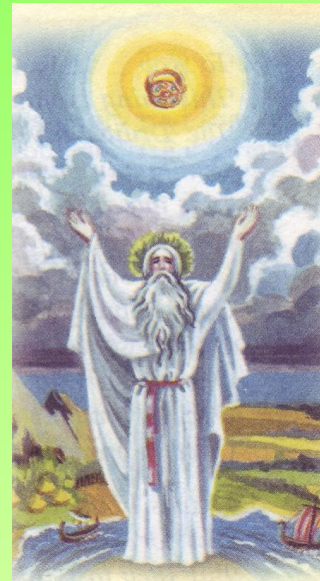
The second place is Oxford.

- It consists of 35 different colleges and 5 “halls”.
- It appeared in 1164 -1169.
- The students taught theology, law, mathematics, natural philosophy, rhetoric.



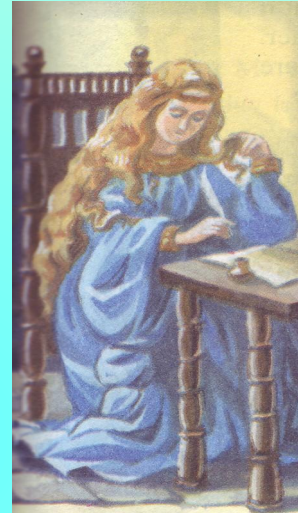
Legendary heroes.

- King Arthur defended his country against Saxon in the VI-th century.
- Merlin, his old Celtic magician, was his best friend.
- King Arthur and his Knights respected honour.



Lady Godiva

- She was the wife of Lord Leofric in Coventry.
- She was kind and beautiful and helped poor people.



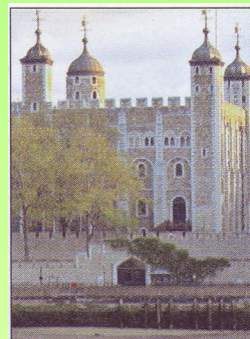
Robin Hood

- He lived in Sherwood Forest in 12-th century and was a brave fighter.
- He and his friends robbed the rich to give to the poor.
- The Majot Oak was the headquarter of Robin Hood.



The Tower of London

- It's the oldest palace, fortress and prison.
- It was built in 1090 by William the Conqueror.
- Ravens live in the Tower according to the legend.



The Royal Castle

- Windsor castle was the residence of the Kings and Queens of England for over 800 years.



Buckingham palace

- Buckingham palace was built in 1703.
- The first monarch who took residence was Queen Victoria.
- The ceremony of the Changing the Guards at Buckingham palace takes place daily at 11.30.



What does the Queen do?

- She is the Head of State, head of judiciary, head of the Church of England, the Commander –in-Chief of the armed forces.
- She represents Britain in visits to most parts of the world.



Test Yourself
AROUND ANCIENT BRITAIN
(Five – Minute Tests).

1. What's the current Queen's name?

a. Queen Ann I, b. Queen Elizabeth II, c. Queen Margaret II

2. Where does the Changing of the Guard take place?

a. Buckingham Palace; b. Piccadilly Circus; c. Victoria and Albert Museum

3. Stonehedge is...

a. a circle of stones; b. a station; c. a city

4. When was Oxford University founded?

a. in the 12-th century; b. in the 18-th century; c. in the 16-th century

5. What was Arthur?

a. an artist; b. a king; c. a writer

6. Where did Robin Hood live?

a. in Coventry; b. in Cornwall; c. in Nottingham

7. What is a place where English Kings are married and buried?

*a. the Tower of London; b. Westminster Abbey in London;
c. the British Museum*

8. What is the Tower of London?

a. a station; b. the oldest museum; c. a city.

9. Everybody in the world knows the Windsor castle because...

*a. the prime meridian passes them; b. it is a residence of Elizabeth II;
c. it is the oldest London Museum*

10. Buckingham palace is...

*a. a place from which you can see London best of all; b. a place from which the scientist watch the stars;
c. the Home of the Queen.*

Key

- 1- b
- 2- a
- 3- a
- 4- a
- 5- b
- 6- c
- 7- b
- 8- b
- 9- b
- 10- c