



Teacher's
Notes

THE SIMPSONS

Do you know who is
who?

THE SIMPSONS



ABRAHAM



MONA



CLANCY



JACKIE



HERB



HOMER



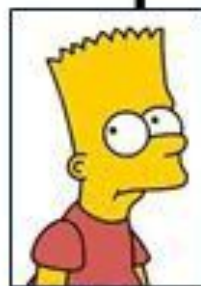
MARGE



PATTY



SELMA



BART



LISA



MAGGIE



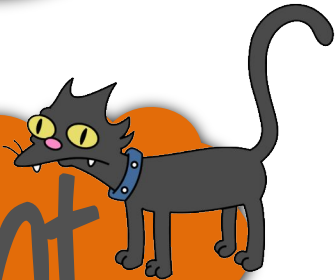
LING



Maggie is Bart's ...



aunt



mum



granny



brother



cousin



wife



sister



NEXT





Jacky is Lisa's ...



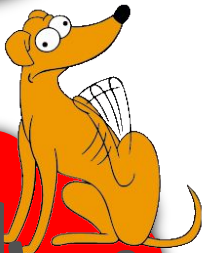
niece



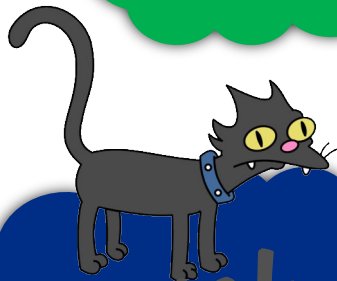
mum



grandma



aunt



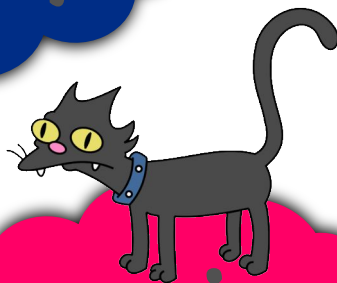
sister



dad



cousin

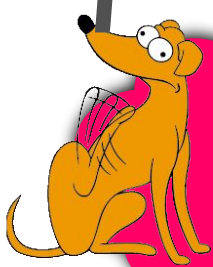


NEXT

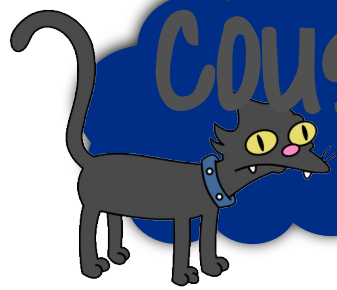




Clancy is Patty's ...



dad



cousin



brother



uncle



nephew

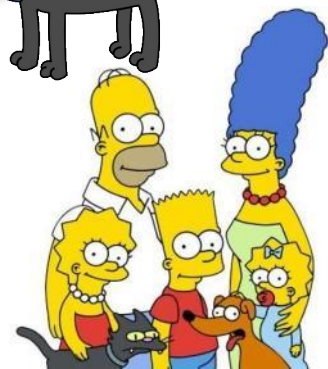


granddad



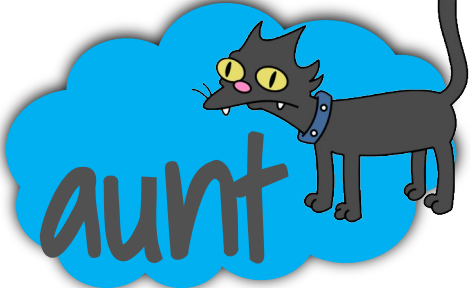
son

NEXT

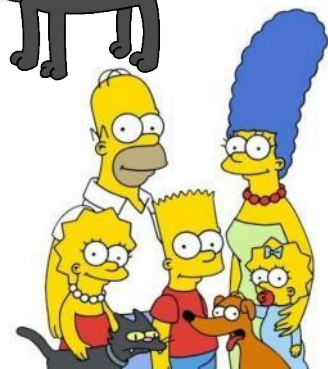


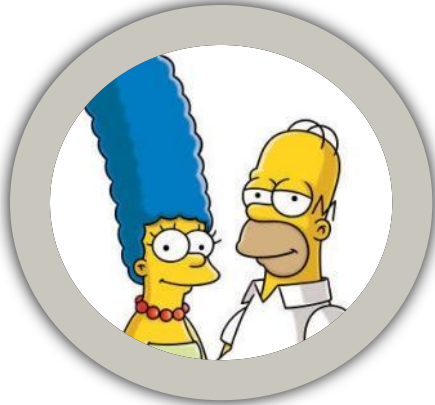


Herb is Homer's ...



NEXT





Homer and Marge
are Bart's...



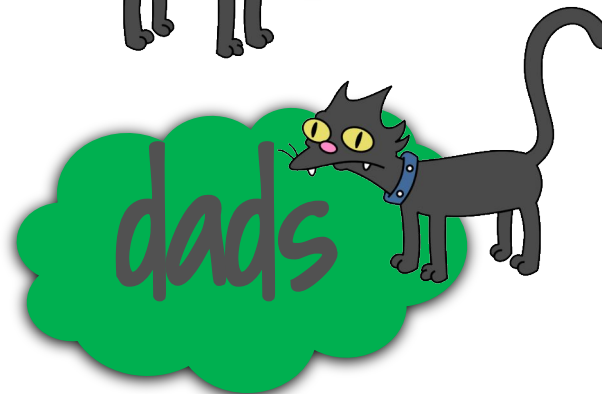
husband



parents



cousins



dads



mums



uncles



aunts

NEXT





Selma is Maggie's



granny



cousin



niece



uncle



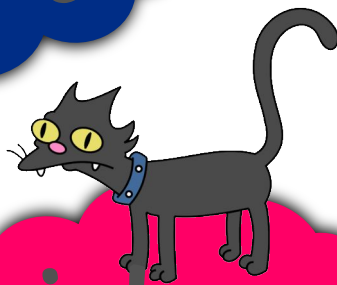
aunt



mum



sister



NEXT





Homer is Ling's ...



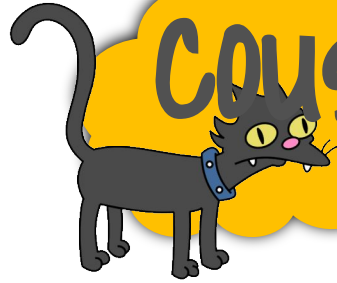
brother



aunt



cousin



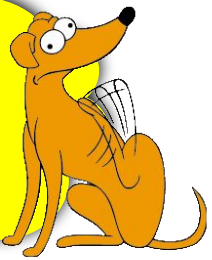
dad



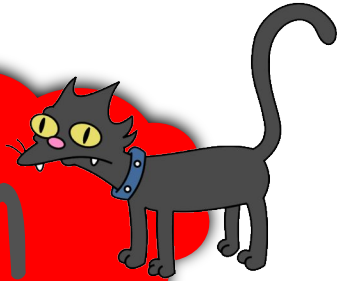
grandpa



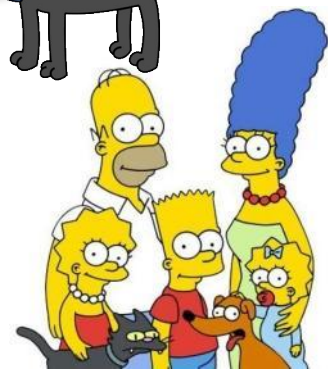
uncle



son



NEXT





Mona is Abraham's...



uncle



granny



aunt

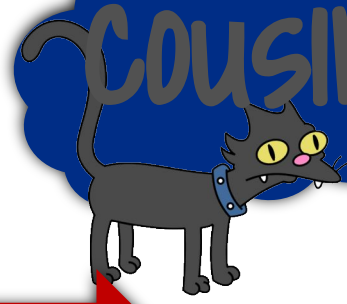


wife

mum



cousin



sister



NEXT





Bart is Mona's ...



nephew

dad

dad

brother

granny

cousin

grandson





Maggie is Ling's ..



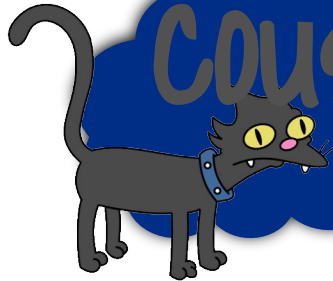
sister



niece



COUSIN



wife



COUSIN



granma



daughter



NEXT

