

Обобщающий урок
регионального
содержания

Учитель: Патракеева Н.И.

The theme of the lesson:

**Our great
countrymen**

Task 1

Test yourself:

See the portraits of famous people below and find out who is who?

1 –

2 –

3 –

4 –

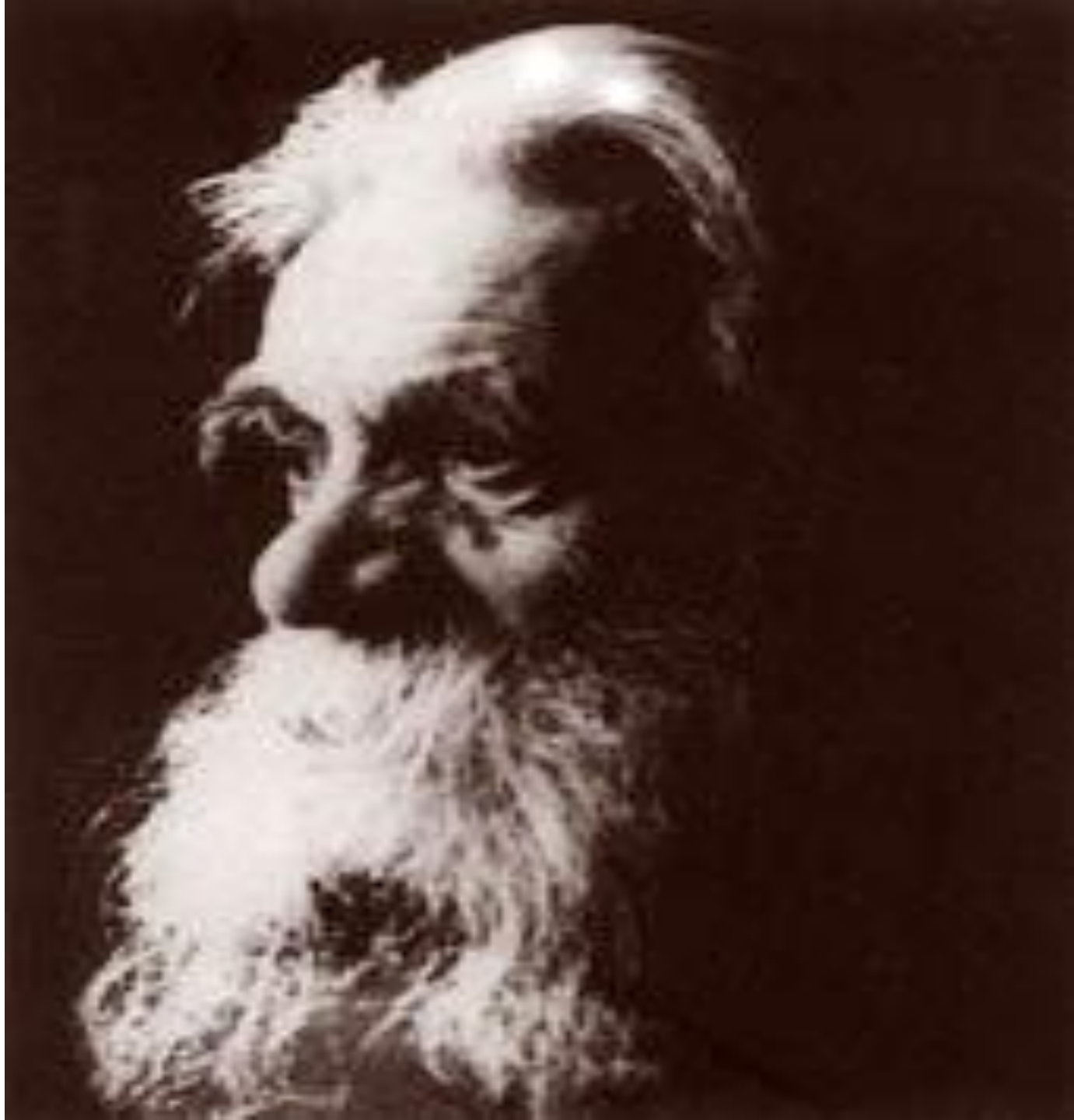
5 –











KEYS:

- 1. F. A. Abramov**
- 2. M.V. Lomonosov**
- 3. A.A. Borisov**
- 4. S.G. Pisachov**
- 5. S.G. Pisachov**

Task 2 Match the columns:

1. F. A. Abramov
2. M.V. Lomonosov
3. A.A. Borisov
4. S.G. Pisachov
5. A.S. Kuchin

- A) a writer
- B) a polar explorer
- C) Arctic painter
- D) a scientist
- E) a fairy teller

KEYS:

1. F. A. Abramov

• A) a writer

2. M.V. Lomonosov

• D) a scientist

3. A.A. Borisov

• C) Arctic painter

4. S.G. Pisachov

• E) a fairy teller

5. A.S. Kuchin

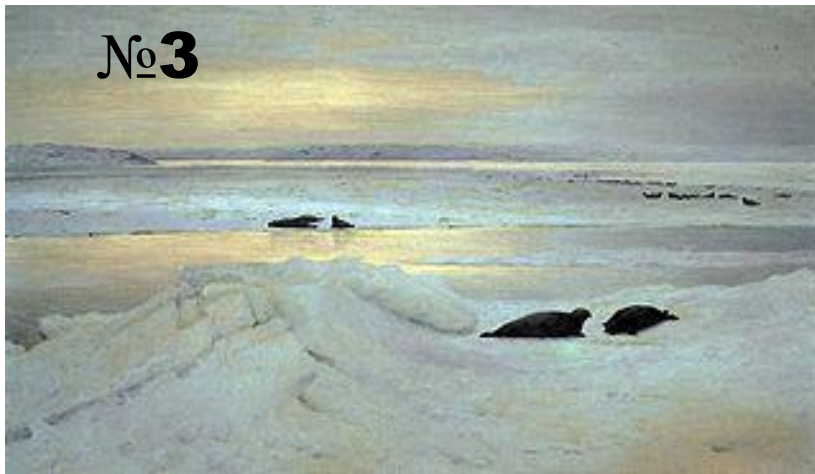
• B) a polar explorer

Task 3 Work in pairs:

Tell each other what you know about our great countrymen.

Task 4

Which picture do you like more?
Give your names...





№1

№2





№3

№4



Task 5 Let's compare your answers:

- **Borisov A.A. “Winter Fairy-tale”, 1913.**
- **Pisachov S.G.
The White Sea shore, 1950th**
- **Borisov A.A., “Spring polar night”, 1897**
- **Pisachov S.G. “The fog is coming”, 1910.**



Borisov A.A. "Winter Fairy-tale", 1913.

**Pisachov S.G.
The White Sea shore, 1950th**





**Borisov A.A., “Spring polar night”, 1897.
The Tretyakov Gallery**

Pisachov S.G. “The fog is coming”, 1910



Task 6

**Let's describe one of the
pictures of famous artists
given above
1,2,3 or 4?**