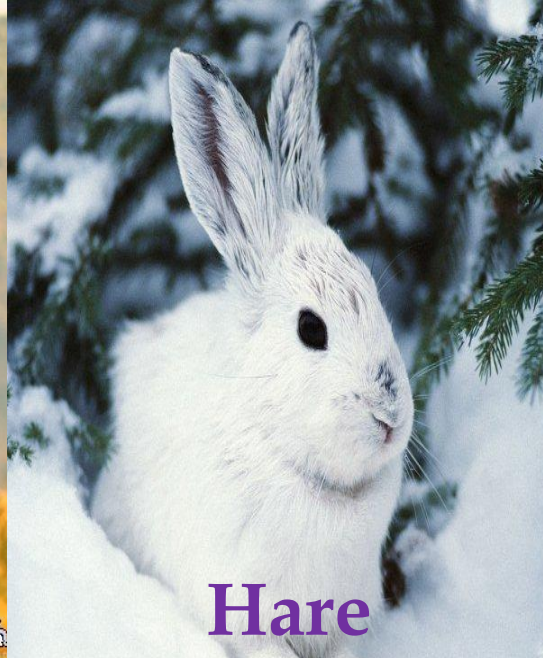


**ANIMALS PLANET**



Giraffe



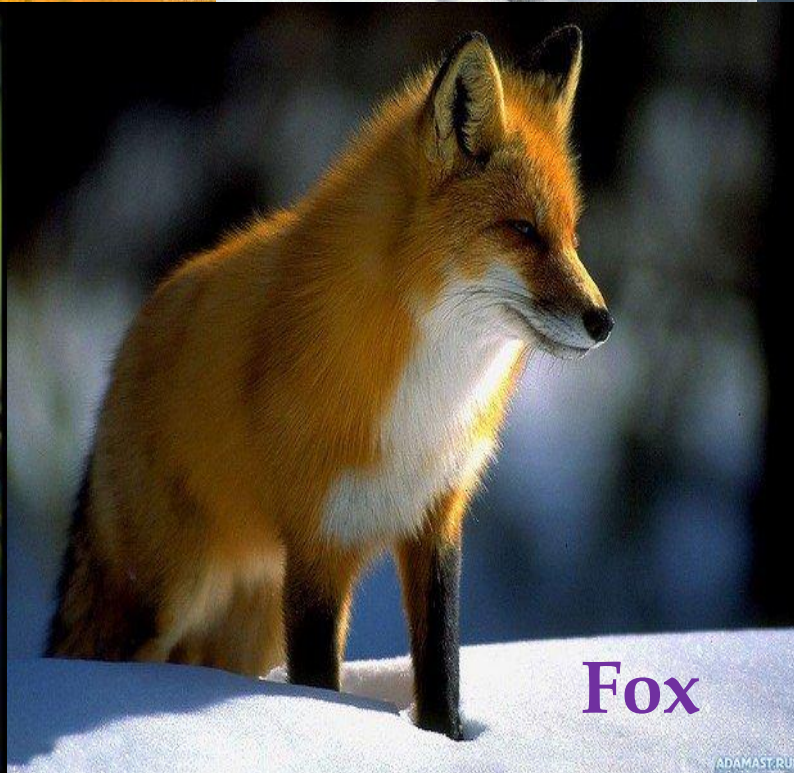
Hare



Crocodile



Parrot



Fox



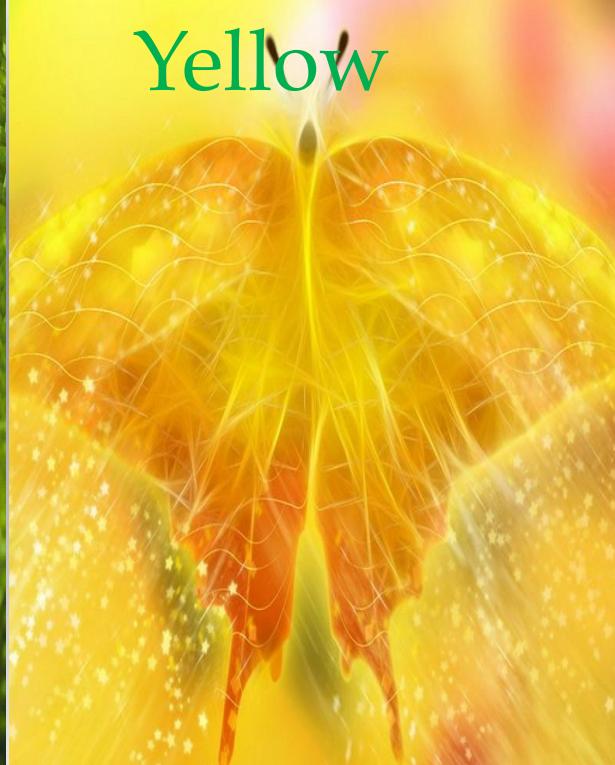
Bear



Green



Yellow



Red



Blue



White



Brown





Run



Swim



Eat



Fly



Jump



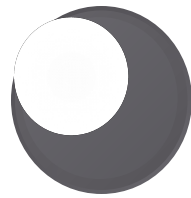
Play



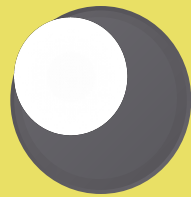
A bright, empty room with large windows and a curved wall. The room is illuminated by natural light from the windows, creating a warm and airy atmosphere. The floor is a light, neutral color, and the walls are white. The text "Housing question" is overlaid in the center of the image in a purple, serif font.

# Housing question

**above**



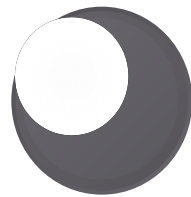
**on**



**i**

**n**

**under**





near          Under  
                                around  
in the middle of  
  opposite

There is a table ..... the window.

There is a small table ..... the room.

..... the table there is a carpet.

There are chairs ..... the table.

There is a sofa ..... the window.



# Weather



# London

is a capital of  
Great Britain





**London**  
**-2°C~3°C**  
**Rainy and foggy**

# Cairo

is a capital of  
Egypt.







Cairo

30°C ~ 40°C

Hot and sunny

# Rome

is a capital of Italy.







Rome  
-2°C ~ 3°C  
Cold and cloudy



# Moscow

is a capital of  
Russia.





Moscow  
-9°C ~ 2°C  
snowy and cold

