



**In the world of
animals**

Put these words into two columns:

Big

Danger

Leg

Tiger

Kilogram

Giraffe

Dog

Large

Kangaroo

Orange

Group

Cage

Village

Eagle

[g]	[dʒ]

Rhime Time!

**My giraffe likes orange juice
In a very big glass with a straw
But my tiger likes grape juice, in a mug
He always growls for more. Grrr!**



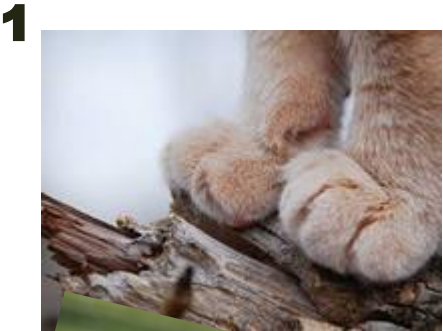
- **Have you got a pet at home?**
- **What is it?**
- **What's its name?**
- **What colour is it?**
- **What does it eat?**
- **What does it drink?**
- **What can it do?**
- **Do you like your pet?**

Animal facts



- A cheetah..... **(run)** very fast.
- Frogs..... **(live)** on all continents except Antarctica.
- Hippos **(give)** birth underwater.
- The blue whale..... **(weigh)** 50 tons at birth.
- Dolphins **(sleep)** with one eye open.
- The black and white rhino **(have)** two horns.
- Butterflies **(taste)** with their feet.
- A crocodile **(move)** fast with its tail.
- A deer **(eat)** grass.
- Leopards **(keep)** moving. They never stay in the same place.





***Paws, a trunk,
legs, ears, a tail,
fur, wings, a
tongue, a
neck, eyes, a
nose, feathers, a
beak.***

11

10

9

8

7

6

5

4

3

2

1

13

12

The background is a bright yellow rectangle. It is decorated with a border of white paw prints and red musical notes. The paw prints are arranged in a circular pattern around the text, with some overlapping. The musical notes are scattered throughout the background, some appearing to float around the paw prints. The text "We're Going to the Zoo" is centered in the middle of the yellow area.

**We're Going
to the Zoo**

Elephants have got two big ears and a trunk.

A giraffe's got a long neck and a long tail.

A panda has got big eyes and big black ears.

A shark's got strong teeth and fins.

An owl has got large eyes, a sharp beak and a lot of feathers.

Tigers have got strong teeth and beautiful striped fur

1.

It's grey. It's got big ears and a long trunk. It's over 5 metres long and it weighs 3 tons. It's very strong and clever. It lives in Africa or India.

2.

It's the tallest animal in the world. It's got an extremely long neck and a black tongue. It's about 6 metres high and weighs 1000 kilograms. It lives in Africa.

3.

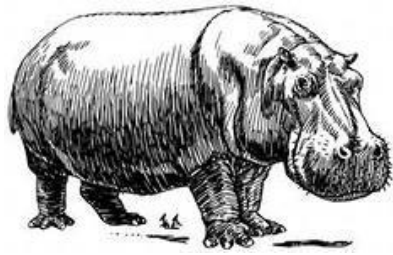
It's a very dangerous animal. It hunts other animals. It's about 3 metres long and weighs over 200 kilograms. It lives in Africa.

4.

It's an animal with white and black stripes. It's got a long tail. It's about 2,5 metres long and it weighs 350 kilograms. It lives in Africa.



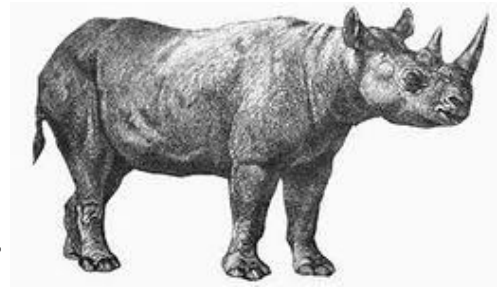
1.



4.



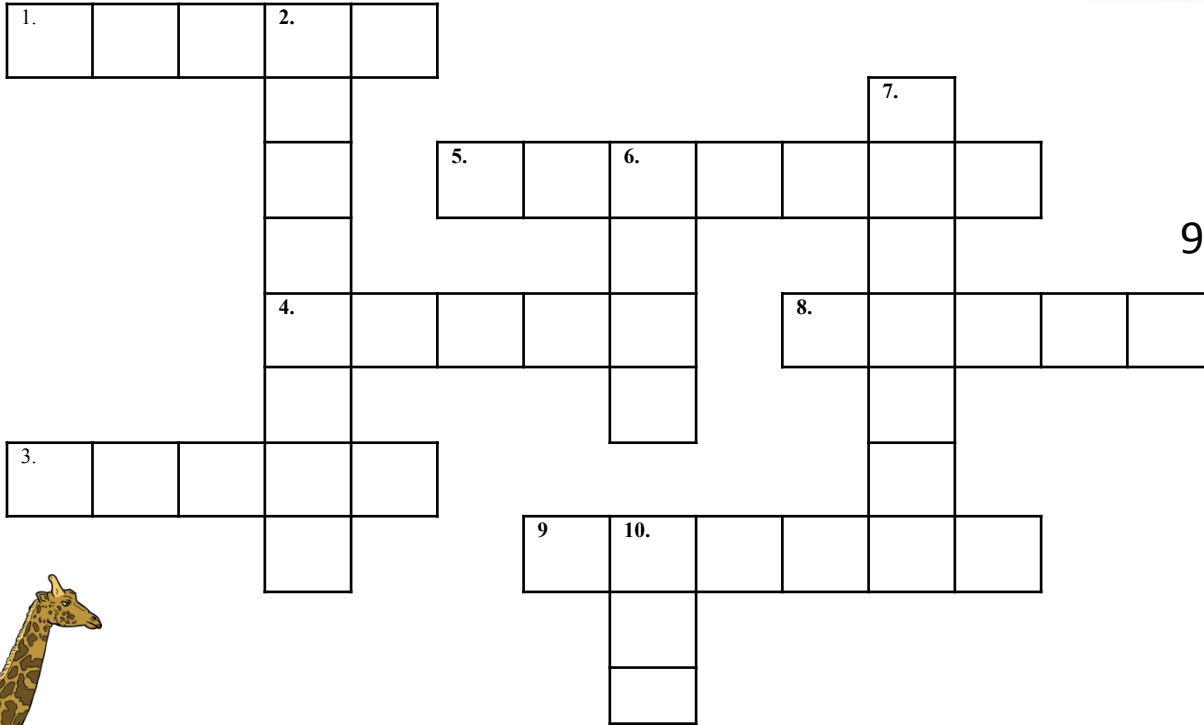
6.



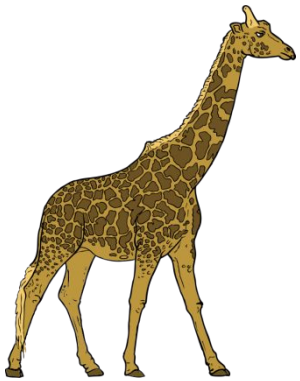
3.



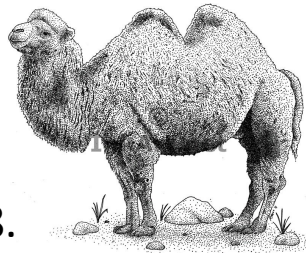
10.



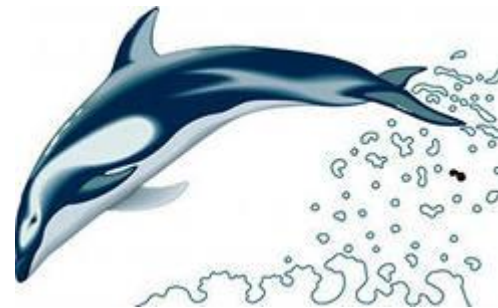
9.



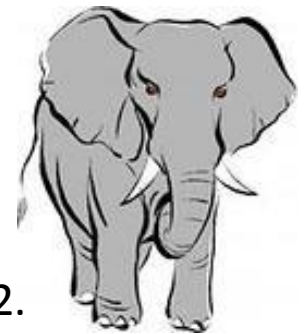
7.



8.



5.



2.

**save
the
tiger!**



- **What animal is it?** *(It's a...)*
- **Where does this animal live?** *(It lives...)*
- **What does it eat?** *(It eats...)*
- **How many kilograms does it weigh?** *(It weighs...)*
- **What colour is it?** *(It's ...)*
- **What can it do?** *(It can ...)*
- **Do you like it?**

**Save
the
panda
a!**



- **What animal is it?** *(It's a...)*
- **Where does this animal live?** *(It lives...)*
- **What does it eat?** *(It eats...)*
- **How many kilograms does it weigh?** *(It weighs...)*
- **What colour is it?** *(It's ...)*
- **What can it do?** *(It can ...)*
- **Do you like it?**

Save the dolphin



- **What animal is it?** *(It's a...)*
- **Where does this animal live?** *(It lives...)*
- **What does it eat?** *(It eats...)*
- **What's the length of this animal?** *(It's ... metres long)*
- **How many kilograms does it weigh?** *(It weighs...)*
- **What colour is it?** *(It's ...)*
- **What can it do?** *(It can ...)*
- **Do you like it?**