

THE TATE GALLERY AND ITS MASTERPIECES

Made by : D.Zaharova

Form : 6 "a"

Supervisor : Osokina A.A

Art is long, life is short (Oscar Wilde)

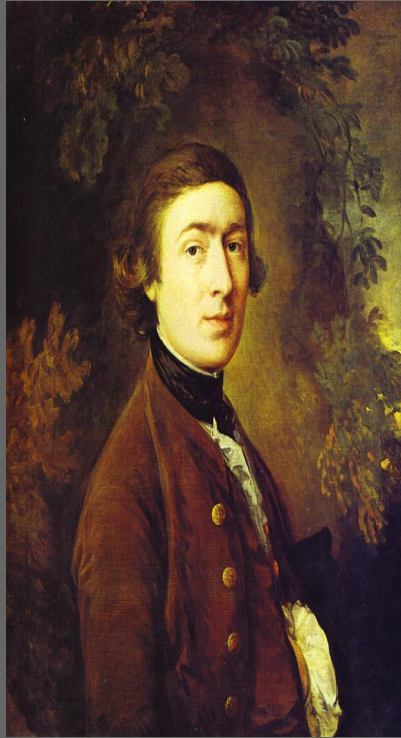
- London is visited by millions of tourists every year. The city is known not only for its ancient cathedrals, churches but particularly for its galleries.

Tate Gallery

- The famous Tate Gallery was opened in 1897 with the financial support of Sir Henry Tate. It has a unique collection of British painting from the 16th century to the present day. The Gallery has many drawings and modern sculpture as well.



Among the best painters represented in the Tate Gallery are Constable, Gainsborough, Turner and Hogarth.



William

Hogarth(1697-1764)

- ◉ William Hogarth is one of the greatest English painters. In his pictures he reflected social life and in many of them the beauty of his painting was accompanied by satire. The “Marriage-a-la-mode”, “The Election Entertainment” were painted to show the life very satirically.
- ◉ In 1742 Hogarth painted “The Graham Children” where he brilliantly used his delicate colours to show the charm of childhood. His “self portrait” with its unusual composition is a pride of the Tate Gallery.

William Hogarth





John

Constable(1776-1837)

- John Constable was fond of the place where he was born and spent his childhood on the river Stour. He saw very beautiful woods, greens in nature and, being very talented, reflected nature's colours in his sketches which he then composed into pictures. He painted the landscape without any changes and the trees or other objects were in his paintings very true to life. He is said to be the first landscape painter in England.

John Constable





William Turner(1775-1851)

- ◉ William Turner began his activity in art as a watercolour master. Light and atmosphere were his characteristic feature. Turner is a super colourist .In 1805 he painted “The Shipwreck”.He showed a terrible disaster at sea.Green was a colour that Turner particularly disliked.
- ◉ In “Show Storm” he reflected with the help of show the idea of survival and even in our days it looks very prophetic.It is considered one of his most original paintings.He studies colour very seriously and is said to anticipate the art of Impressionist and abstract painters of the 20th century.
- ◉ As he was at heart a sailor,a ship was a living creature to him.That is why his paintings are so powerful.He loved painting ships, men connected with the sea,fishermen and sailors at work.

William Turner





Thomas

Gainsborough(1727-1788)

- ◉ Thomas Gainsborough is a very lyrical painter who successfully connected man and nature. A very strong psychologist, he painted mostly women on the background of a scenery.
- ◉ He liked blue colours best of all. His portraits are optimistic and the light and shade of colour are in full harmony with the lines. All his life he expressed love to nature in his paintings.

Thomas Gainsborough





- ◎ Many more painters are represented in the Gallery. Come and see! You are welcome!