

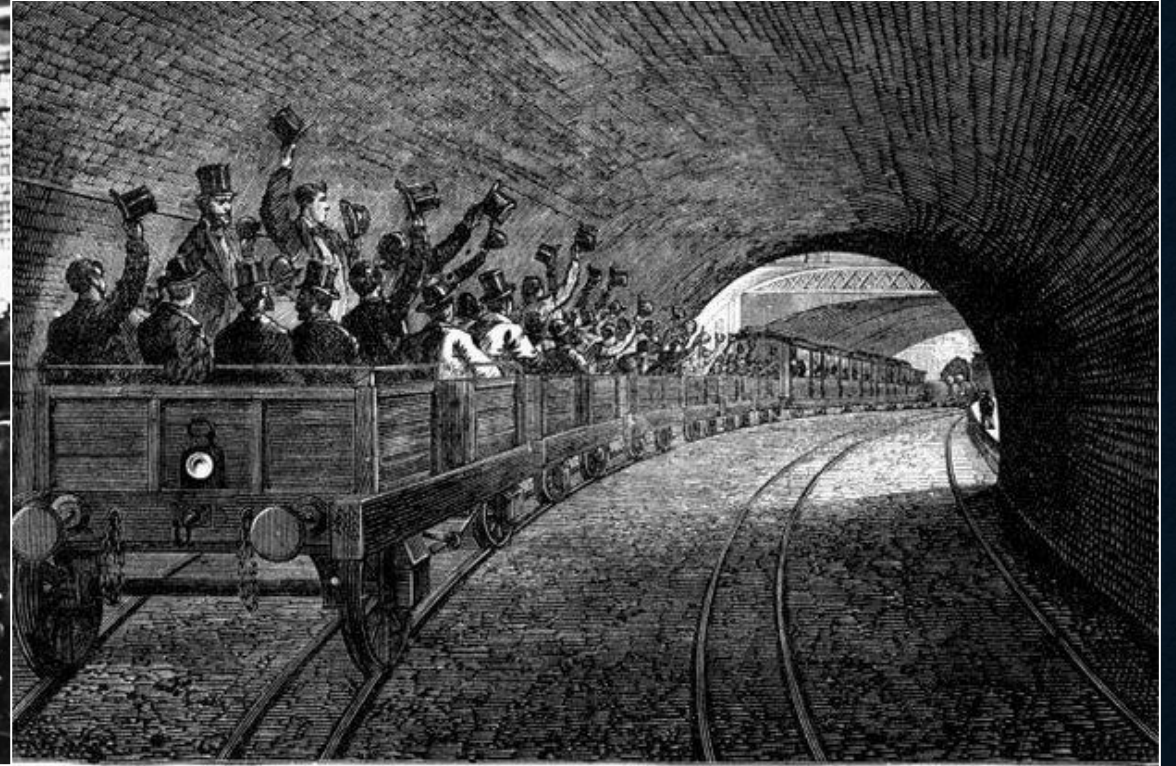
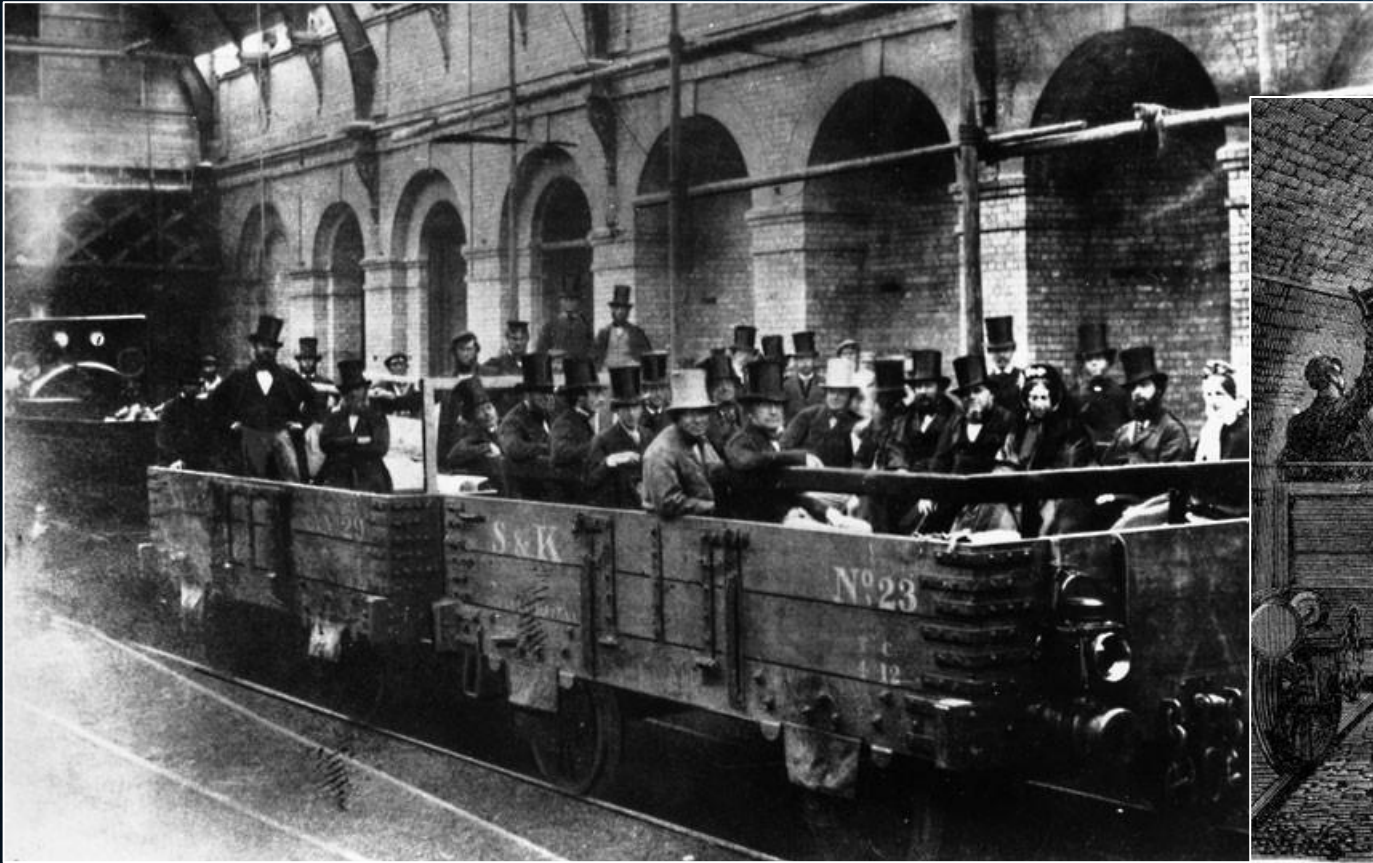
THE LONDON UNDERGROUND



The London Underground, or the Tube as it is often called, is the oldest underground train network in the world. Opened in 1863 there are a total of eleven lines, 270 stations and over 400 km of track, making it the third longest subway system in the world.



*The London Underground carries over a billion passengers a year, or about 3 million every day.
The deepest stations are over 60 metres below the surface*



TRIAL TRIP ON THE UNDERGROUND RAILWAY, 1863.

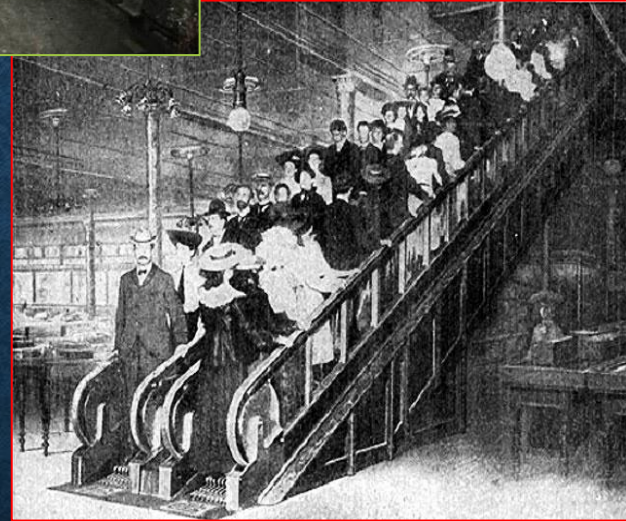
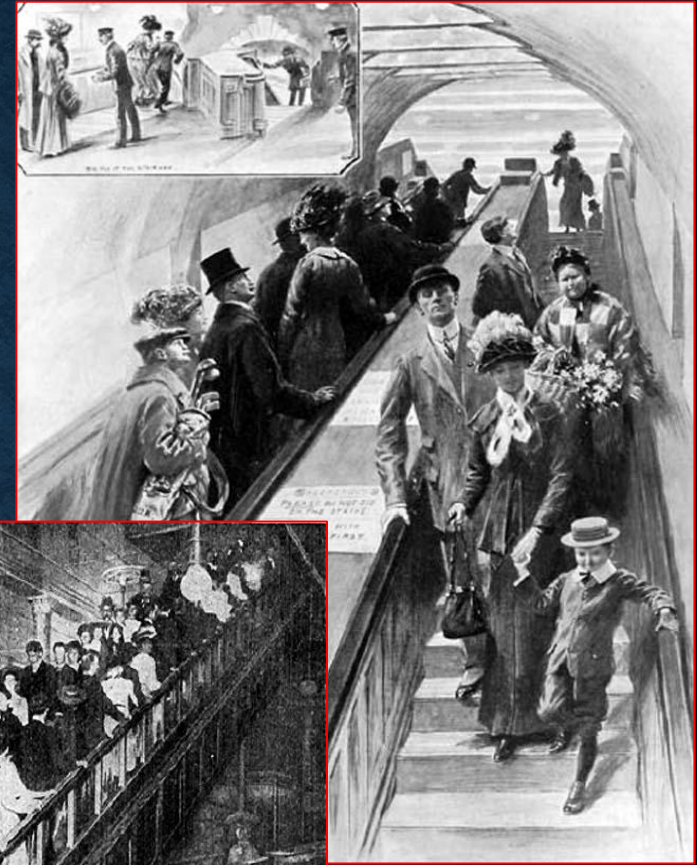
In 1863 the first underground railway, the Metropolitan Line, opened. Wooden carriages were powered by steam locomotives. The system of tracks gradually expanded. By the end of the 19th century most lines used electricity to power the trains.



During World War II many tube stations were **air-raid shelters** where people **sought** protection during the German bombing of the city.

The London Underground normally operates daily between 5 a.m. and midnight. Some lines stay open throughout the night on special occasions, like New Year's Eve. London Underground stations can get very crowded during the weekday rush hours.





Over the decades underground stations have been modernized. In the past years many have been equipped with Wi-Fi access to make journeys as comfortable as possible.



The well-known symbol of the London Underground, a red circle with a blue bar, was developed at the beginning of the 20th century and has not changed much since then.



Some of London's Underground stations are buildings which have a special **architectural value**. Many original stations have been **restored** and look similar to the way they did over a century ago.



Although so many people use the underground every day, the safety record of the system is very good. Most deaths occur as suicides.



THANK YOU FOR YOUR ATTENTION

