

England

Unit 9
Part 2
Form 6

Ex 18, page 105

**Buckingham
Palace**

**Букингемский
дворец**



**Queen
Elizabeth II**

**Королева
Елизавета II**



Trafalgar Square

Трафальгарская площадь



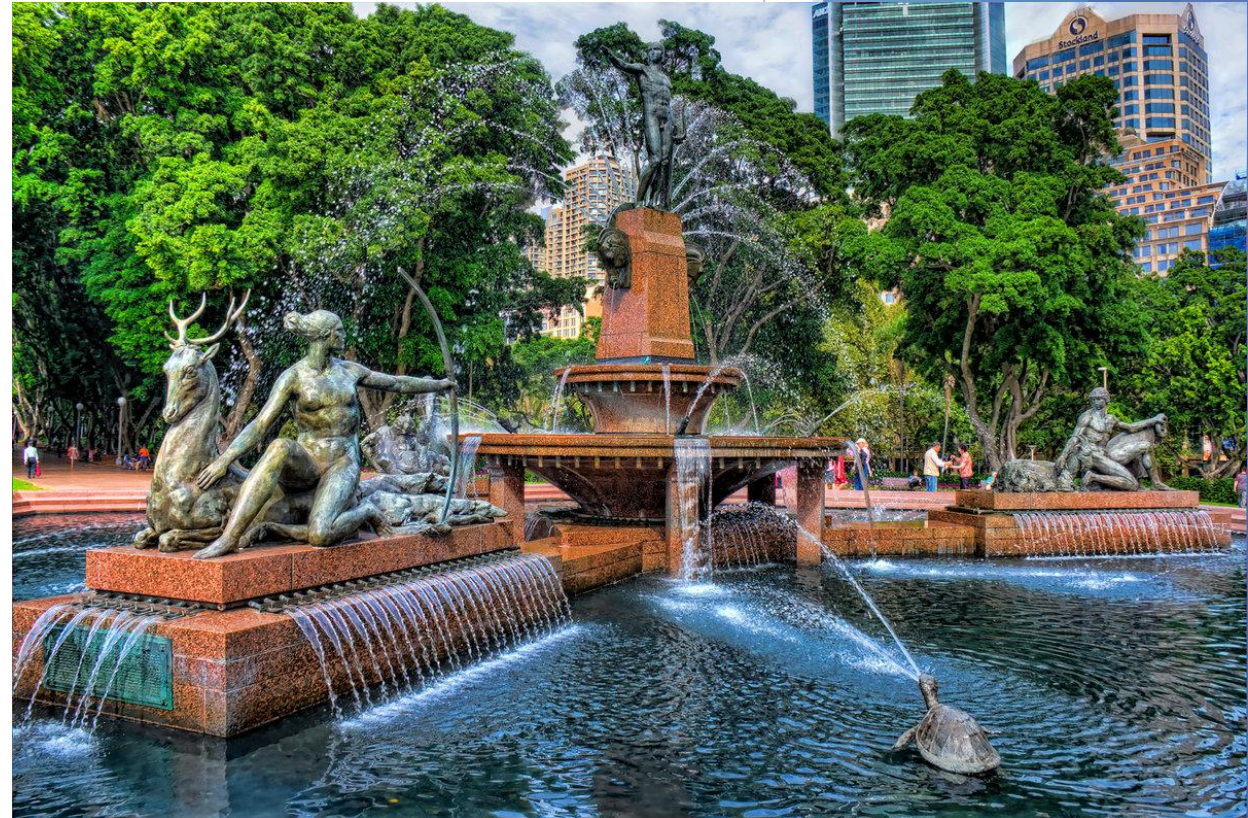
St. James's Park

Сент-Джеймс Парк



Hyde Park

Гайд-парк



Regent's Park

Парк регентов



London Zoo

Лондонский зоопарк



**Roman Catholic
Church**

**Римско-католическая
церковь**



Parliament

Парламент



the Crown

Корона



the Royal Family

КОРОЛЕВСКАЯ СЕМЬЯ



**the Church of
England**

**Церковь
Англии**



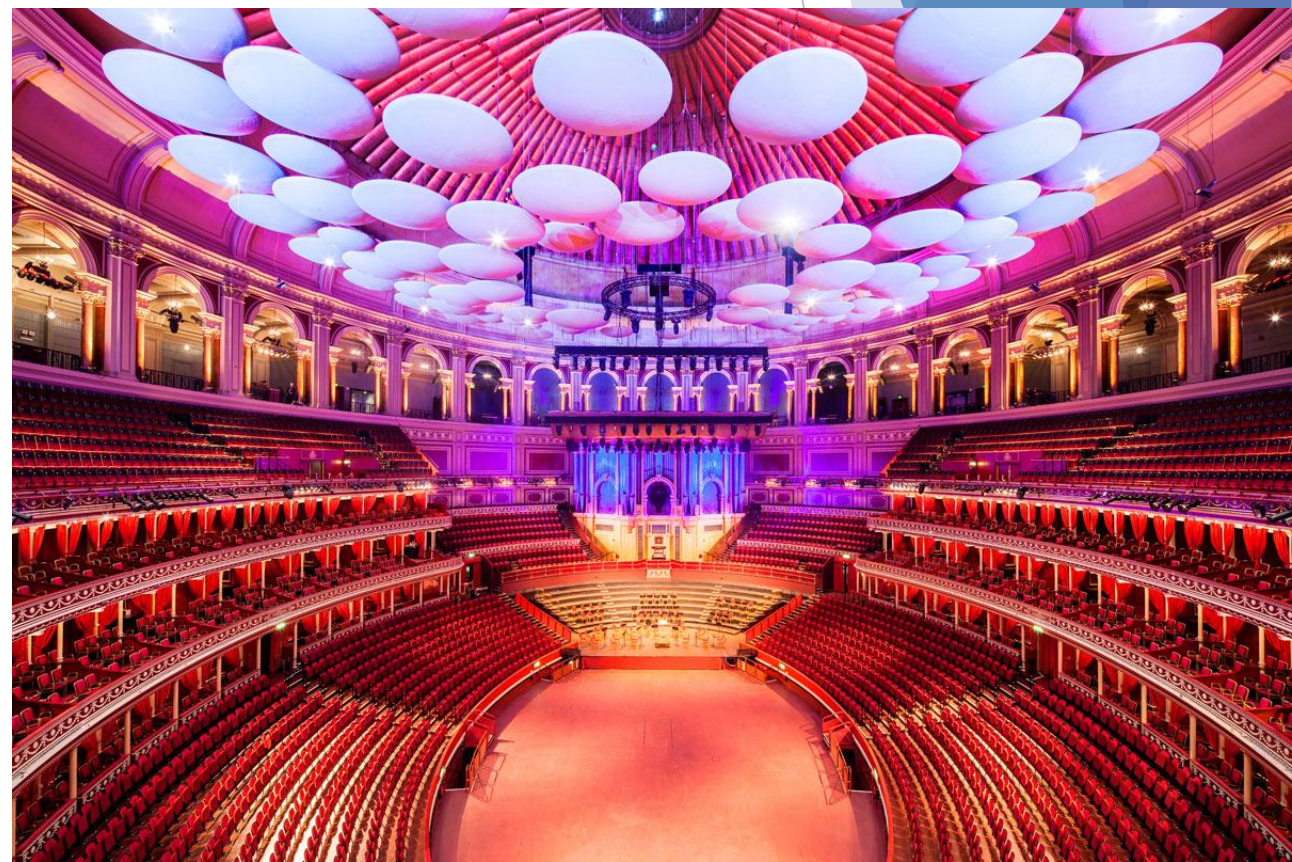
the Spanish Armada

ИСПАНСКАЯ армада



the Royal Albert Hall

Королевский Альберт Холл



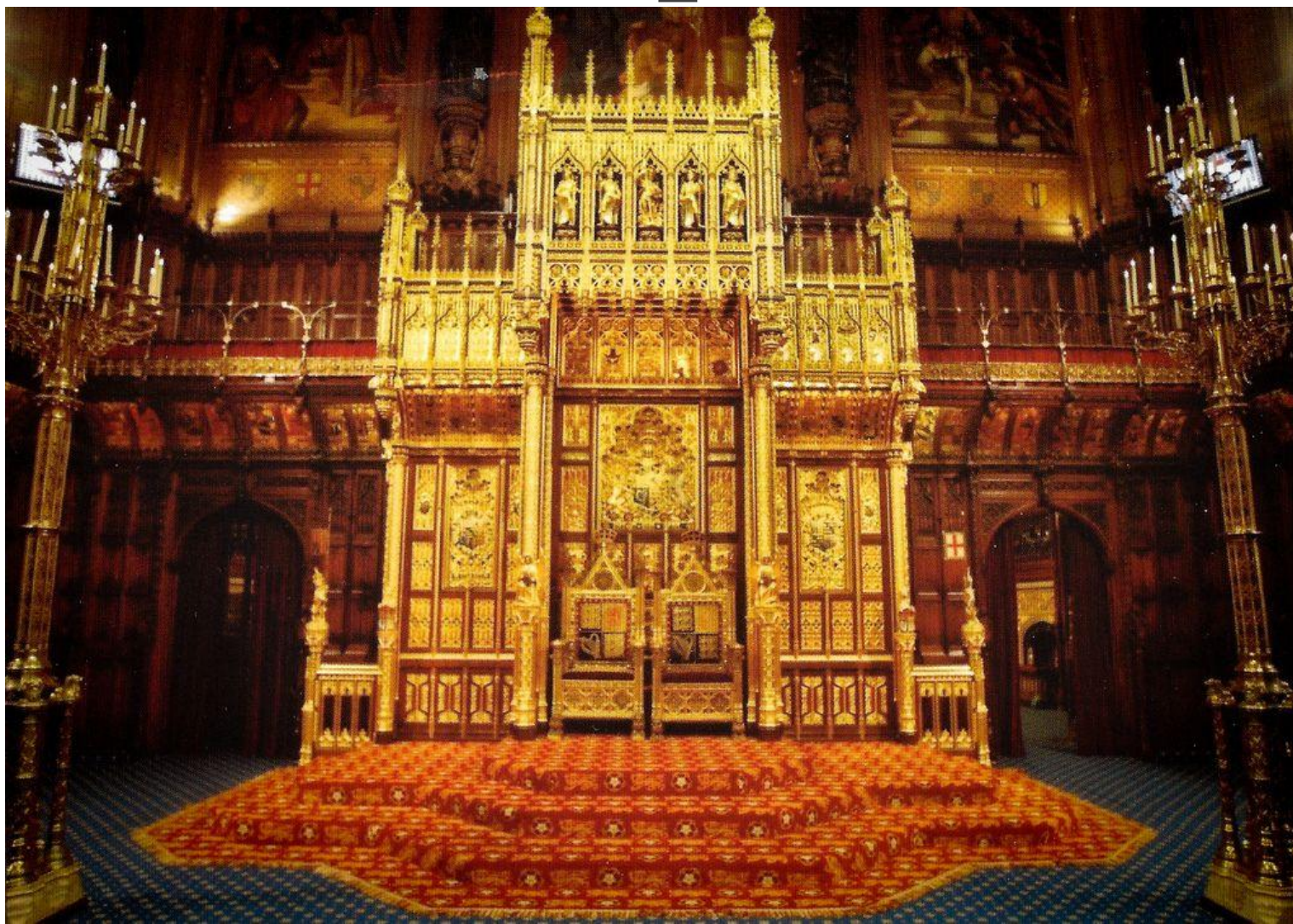
The Victoria and Albert Museum

музей Виктории и Альберта



the British Throne

Британский трон



the Mall

ТОРГОВЫЙ ЦЕНТР



Ex 19, page 105



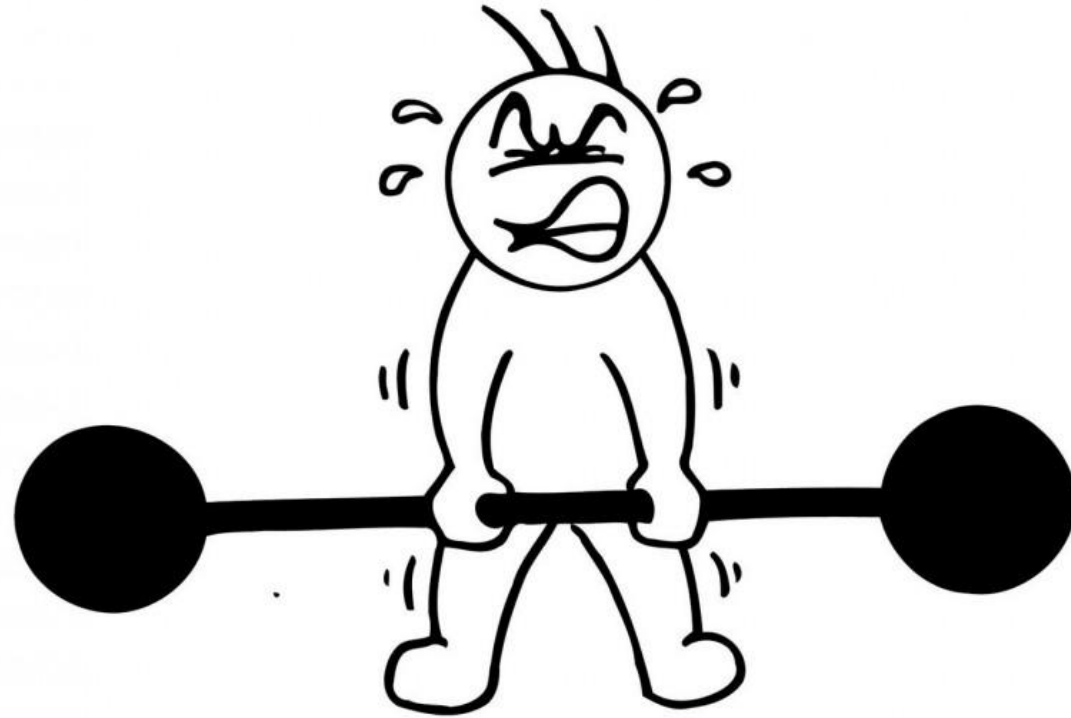
Henry VIII (1491-1547)

**Queen
Elizabeth I
(1533-1603)**



feeble

слабый





Queen Victoria (1819-1901)

a duke

герцог



a duchess

герцогиня



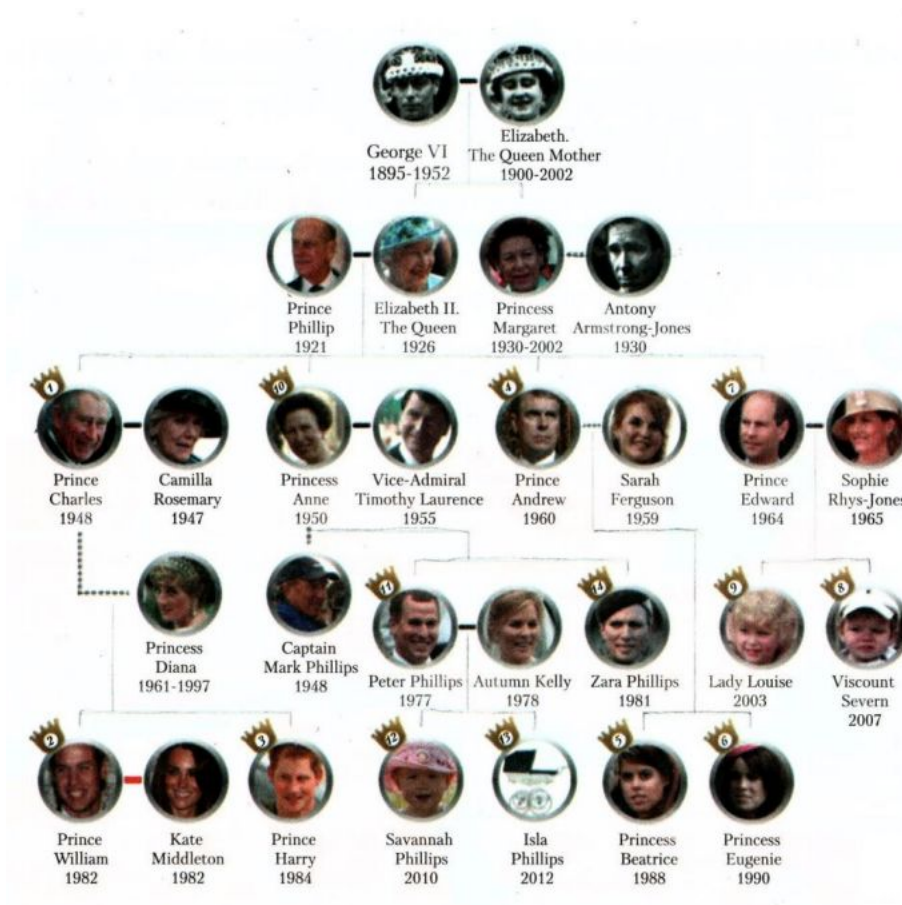
to knit

ВЯЗАТЬ



order of succession to the Crown


ПОРЯДОК НАСЛЕДОВАНИЯ ПРЕСТОЛА



Ex 29, page 111

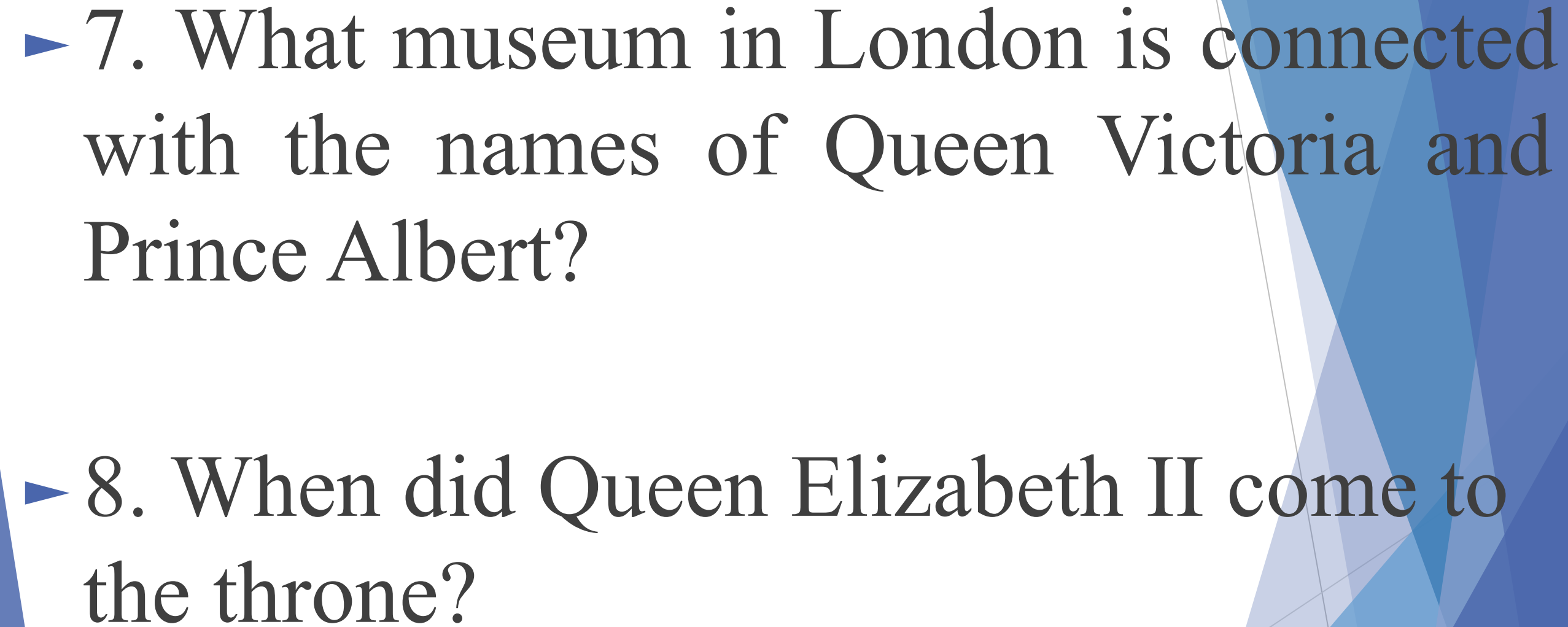
- ▶ a) 1. What a beautiful procession!
The people are so happy and their
clothes are so bright!
- ▶ 2. How wonderful the world is!

- ▶ 3. My elder brother is so clever and so kind!
- ▶ 4. What wonderful weather we are having today! (What wonderful weather it is!) The sky is so blue! And the sun is so warm!

- 
- ▶ 5. What a boring film it is, it's so long. I don't like such films.
 - ▶ 6. What a wide avenue it is and how green it is!

- ▶ b) 1. What palace is the official residence of the Queen?
- ▶ 2. Where is London Zoo situated?
- ▶ 3. Who reigned (in) England at the end of the sixteenth century?

- ▶ 4. Why was King Henry VIII one of (the) important monarchs in Britain?
- ▶ 5. Whose reign was the longest in the history of England?
- ▶ 6. When was the Spanish Armada defeated?

- 
- The background of the slide features a complex geometric pattern of overlapping triangles in various shades of blue, ranging from light to dark. The pattern is most prominent on the right side and bottom of the slide.
- ▶ 7. What museum in London is connected with the names of Queen Victoria and Prince Albert?
 - ▶ 8. When did Queen Elizabeth II come to the throne?

▶ 9. What places in London remind us of the royal family?

▶ 10. Queen Elizabeth II is Queen Victoria's great-great-granddaughter, isn't she?

Ex 33, page 112

▶ 1

▶ 2

▶ 3

▶ 4

▶ 5

▶ 5

▶ 2

▶ 1

▶ 3

▶ 7

▶ 6

▶ 7

▶ 6

▶ 4