

The 18th of
December



A pair of hands is shown holding a small, realistic-looking globe of the Earth. The globe is centered on the continent of Australia, with the surrounding oceans and clouds visible. The hands are positioned as if cradling the globe. The background is a solid light blue color. Overlaid on the top half of the image is the text 'saving planet EARTH' in a bold, white, sans-serif font. The word 'EARTH' is significantly larger than 'saving planet'.

saving planet
EARTH

*Comparing Present simple
and Present continuous.*

[ŋ]

- saving;
- swimming;
- recycling;
- washing;
- using;
- hang;
- shopping.

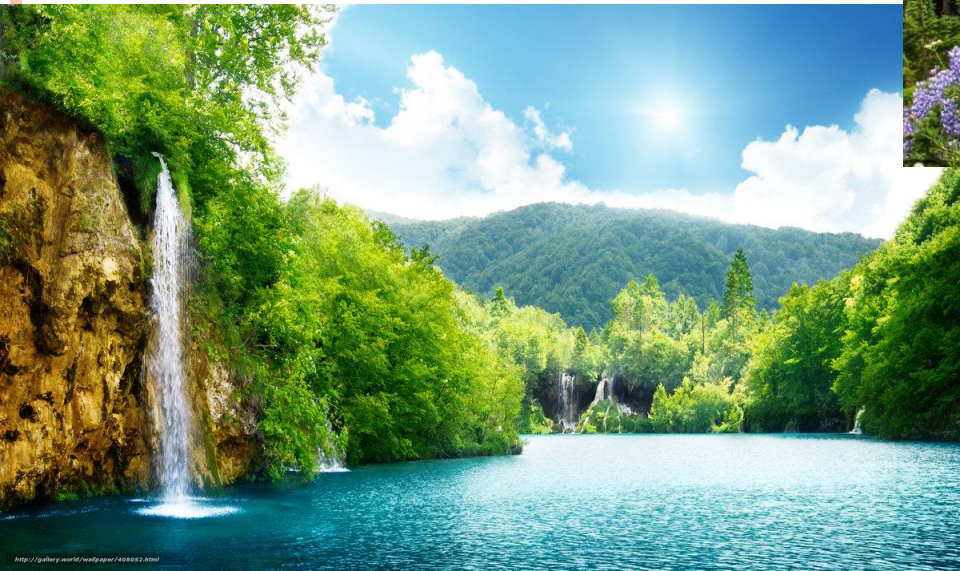
[ɜ:]

- her;
- skirt;
- girl;
- surf;
- early.



- 1) How often do you play computer games?
- 2) How often do you go swimming?
- 3) How often do you lay the table?
- 4) How often do you go shopping?
- 5) How often do you tidy the room?
- 6) How often do you hang out with friends?







Recycle - перерабатывать (отходы)



Saving the world





Plastic bottles



Metal cans



Glass jars



Paper



Cardboard boxes



Lorry



Rubbish





bottle



wrappers



can



packet



pots



jar





WHAT CAN WE DO FOR SAVING OUR PLANET?

- **put rubbish in the bins;**
- **write on both sides of each paper;**
- **don't waste paper;**
- **turn off the TV, computers, the light when you leave your room;**
- **turn off the water when you are cleaning your teeth;**
- **re-used bottles, bags.)**



LET`S HAVE A REST



1 group

- ▣ What`s the bottle made of?
- ▣ It`s made of ...

- ▣ What`s the can made of?
- ▣ What`s the jar made of?
- ▣ What`s the packet made of?
- ▣ What`s the pot made of?
- ▣ What`s the wrapper made of?

2 group

- ▣ Where does the bottle go?
- ▣ It goes in the ... box.

- ▣ Where does the can go?
- ▣ Where does the jar go?
- ▣ Where does the packet go?
- ▣ Where does the pot go?
- ▣ Where does the wrapper go?



They collect
rubbish every
day. (P.S.)



He is cleaning room
now. (P.C.)



- 1 We always **recycle** our rubbish at school.
- 2 They're **putting** the magazines into the green recycling bin.
- 3 She's **throwing** away her old toys.
- 4 Big lorries **collect** the rubbish every Thursday.
- 5 I sometimes **eat** sweets after school.
- 6 I'm **drinking** a can of cola.
- 7 My brother and I **are taking** our rubbish to the recycling centre.
- 8 That glass bottle **goes** in the blue recycling bin.



WRITING A LETTER.



Dear friend,

I would like to tell you about my family's chores.

Every morning I 1 my bed, take the dog for a walk.

I usually 2 my room every Saturday. But today I 3 my homework. My sister sometimes 4 me, but today she 5 her old toys in to the bag. My mum and dad 6 our rubbish to the recycling center now.

On Saturdays we are busy.

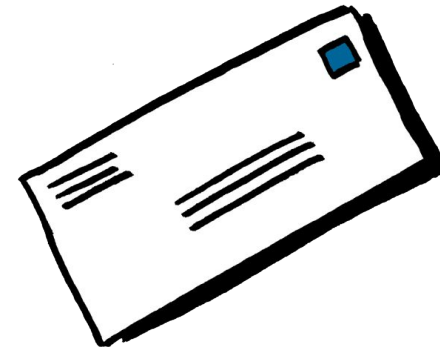
Does your sister often 7 you? 8 your rubbish?

What 9 now?

Write back soon!

Best wishes,

Your Pen Friend



1. make/am making
2. tidy/ am tidying
3. do/ am doing
4. helps/ is helping
5. puts/ is putting

6. take/are taking
7. help/helps
8. Do you usually recycle/Are you usually recycling
9. do you do/ are you doing



- 1. What are the children holding in picture 1?
- 2. What's the bottle made of in picture 2?
- 3. Is the girl throwing away the cans in picture 3?
- 4. Where is the secretary putting the paper?
- 5. Is the cook recycling the glass?
- 6. How often does the lorry come to the school?

