

# THE UNITED KINGDOM OF GREAT BRITAIN AND NORTHERN IRELAND.



**BEGIN**



Yznaika.com

№2 Ш.УӘЛИХАНОВ АТЫНДАҒЫ ЖАЛПЫ ОРТА  
МЕКТЕБІ МЕМЛЕКЕТТІК МЕКЕМЕСІ

- Open Lesson
  - Form 7
- F. Shynybekova

• 2014-2015

# PLAN

GEOGRAPHY

THE FLAG

GOVERNMENT

LONDON

ADMINISTRATIVE DIVISIONS

THE NATURE

CULTURE

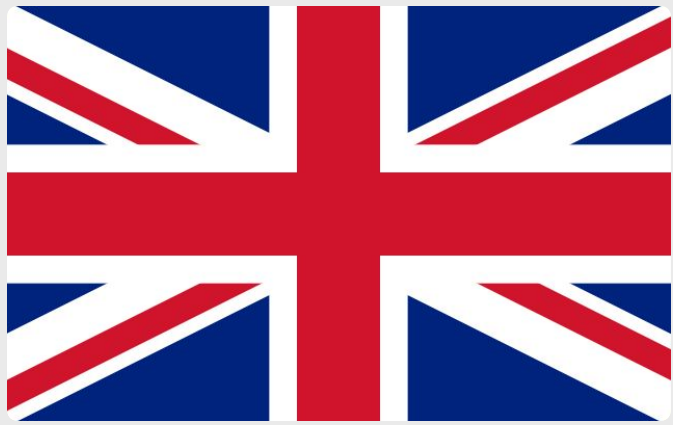
ATTRACTION

LITERATURE



# GEOGRAPHY

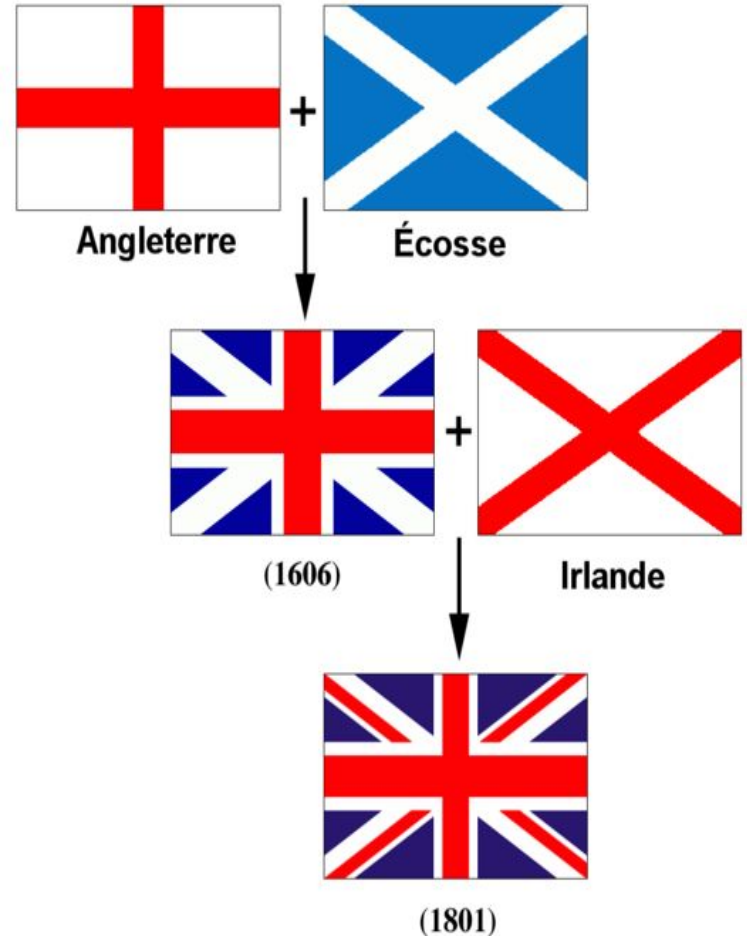
The United Kingdom of Great Britain and Northern Ireland is situated on the British Isles. The British Isles are separated from European continent by the North Sea and the English Channel.



# THE FLAG



**The flag of the United Kingdom** (*the Union Jack*) consists of three crosses. The big red cross is the cross of Saint George, the patron saint of England. The white cross is the cross of Saint Andrew, the patron saint of Scotland. The red diagonal cross is the cross of Saint Patrick, the patron saint of Ireland.

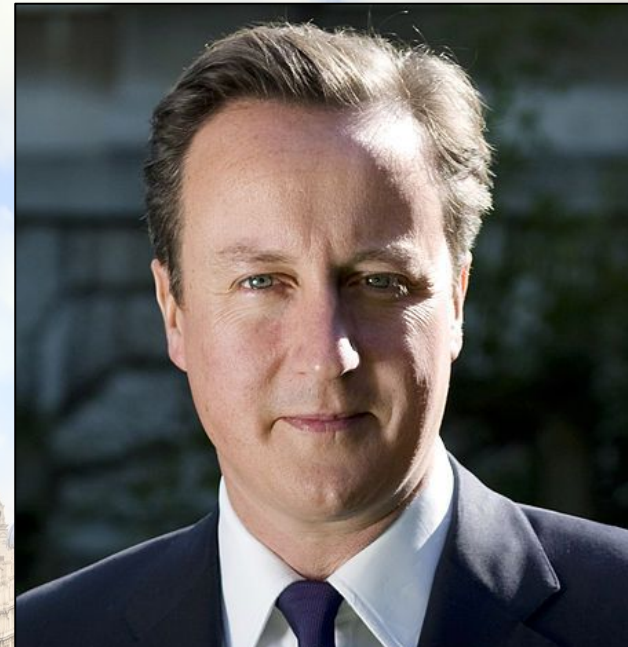


# GOVERNMENT

The UK is a constitutional monarchy.



Elizabeth II (born 21 April 1926) is the constitutional monarch of 16 sovereign states, known as the Commonwealth realms, and their territories and dependencies, and head of the 53-member Commonwealth of Nations. She is Supreme Governor of the Church of England and, in some of her realms, carries the additional title of Defender of the Faith.



David William Donald Cameron (born 9 October 1966) is the Prime Minister of the United Kingdom, First Lord of the Treasury, Minister for the Civil Service and Leader of the Conservative Party. He represents Witney as its Member of Parliament (MP).

# LONDON

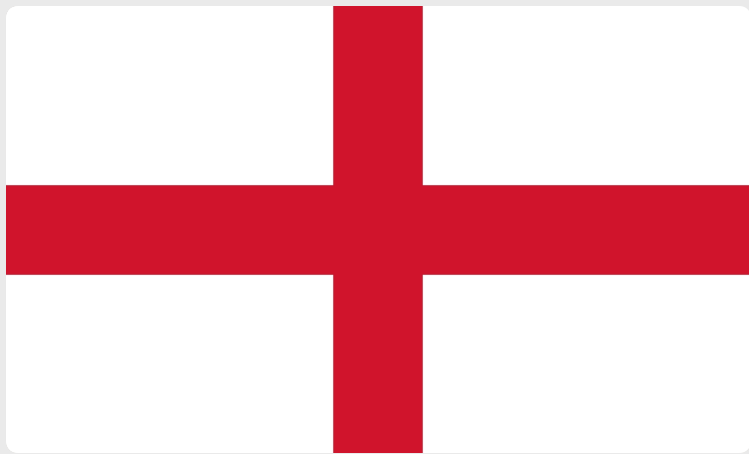


The capital of the UK is **London**. It is about two thousand years old. Now London is one of the biggest cities in the world.



# ADMINISTRATIVE DIVISIONS

The UK consists of **four main parts: England, Scotland, Wales and Northern Ireland**. England is in the southern and central part of Great Britain. It is the richest, most fertile and most populated part of the country. London is the capital of England.





# ADMINISTRATIVE DIVISIONS

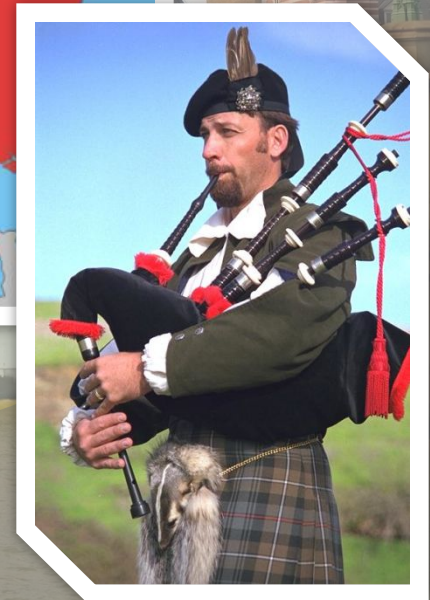
Scotland is the most mountainous region with the highest peak, Ben Nevis.

It is divided into three regions:

- the Highlands
- the Lowlands
- the Southern Uplands

The capital of Scotland is **Edinburg**.

The Scottish are wearing kilts.



# ADMINISTRATIVE DIVISIONS

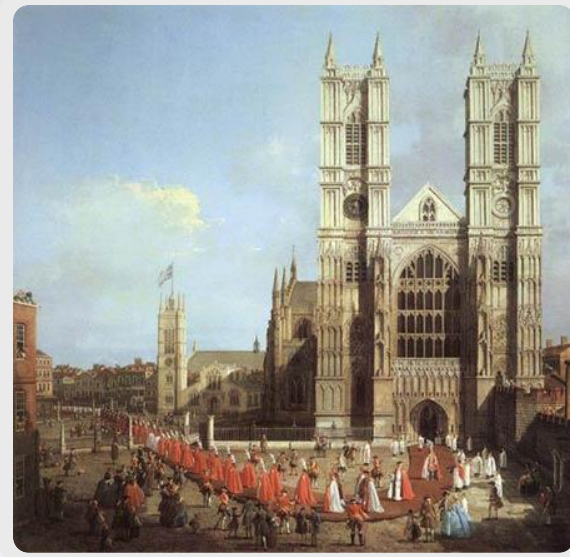
The capital of **Wales** is **Cardiff**. Wales is a country of lakes. In Wales people speak English and Welsh. Welsh is very different from English.

The leek is the emblem of Wales.



# THE NATURE

**Great Britain** is rich in world-famous places. Certainly among them there are famous university cities Oxford and Cambridge, Shakespeare's birthplace - Stratford-upon-Avon, Hyde Park, The tower of London, the Palace of Westminster and etc.



# CULTURE

Traditions play the most important role in the life of the people than in other countries. The best examples are their Queen, money system, their weights and measures. Englishmen are proud of their traditions and carefully keep them.



# ATTRACTION

There is prehistoric monument in Great Britain which is as interesting as Egyptian pyramids. This is **Stonehenge**. Stones stand here in circles. Scientists think that Stonehenge was built to calculate the annual calendar and seasons.



# ATTRACTION



**The Palace of Westminster, also known as the Houses of Parliament or Westminster Palace, is the meeting place of the two houses of the Parliament of the United Kingdom — the House of Lords and the House of Commons**



**The Collegiate Church of St Peter at Westminster, which is almost always referred to popularly and informally as Westminster Abbey, is a large, mainly Gothic church, in Westminster, London. It is the traditional place of coronation of British monarchs.**



**Buckingham Palace – Queen's Residence**

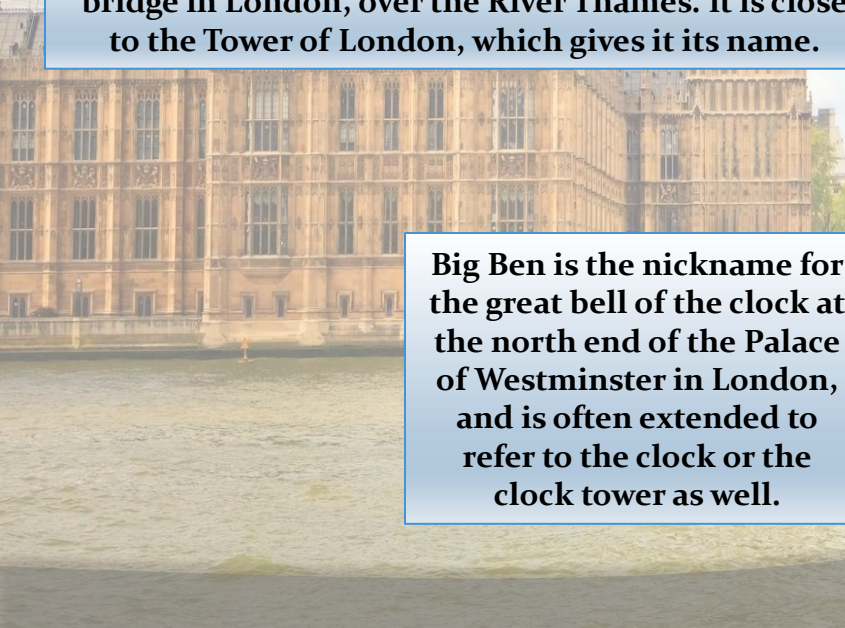
# ATTRACTION



**Tower Bridge is a combined bascule and suspension bridge in London, over the River Thames. It is close to the Tower of London, which gives it its name.**



**Trafalgar Square is a tourist attraction, and one of the most famous squares in the UK and the world. At its centre is Nelson's Column's, which is guarded by four lion statues at its base. The square is also used as a location for political demonstrations and community gatherings, such as the celebration of New Year's Eve in London.**



**Big Ben is the nickname for the great bell of the clock at the north end of the Palace of Westminster in London, and is often extended to refer to the clock or the clock tower as well.**



# ATTRACTION



**Her Majesty's Royal Palace and Fortress, more commonly known as the Tower of London, is a historic castle and scheduled monument in central London, on the north bank of the River Thames.**



**The Merlin Entertainments London Eye (commonly the London Eye, or Millennium Wheel) is an extremely large passenger-carrying Ferris wheel situated on the banks of the River Thames in Central London in the United Kingdom. It is the largest Ferris wheel in Europe, and has become the most popular paid tourist attraction in the United Kingdom**



# LITERATURE

Spotlight. Student's Book 5. Virginia Evans, Jenny Dooley  
In Touch. Student's Book 3. Michael Macfarlane, Carol Skinner

[www.tour-dm.ru](http://www.tour-dm.ru)  
[www.wikipedia.org](http://www.wikipedia.org)  
[www.profnavigator.ru](http://www.profnavigator.ru)  
[www.dolgfactor.ru](http://www.dolgfactor.ru)  
[www.yznaika.com](http://www.yznaika.com)  
[www.otdyh.ru](http://www.otdyh.ru)  
[www.geofish.ru](http://www.geofish.ru)  
[www.lingvotech.com](http://www.lingvotech.com)  
[www.worldpolitics.ru](http://www.worldpolitics.ru)  
[Www.edu.ge.ch](http://Www.edu.ge.ch)  
[www.bsigroup.ru](http://www.bsigroup.ru)  
[Www.izhevskinfo.ru](http://Www.izhevskinfo.ru)  
[www.people-news.ru](http://www.people-news.ru)  
[www.etoday.ru](http://www.etoday.ru)  
[www.infozoom.ru](http://www.infozoom.ru)



**REPEAT**



**FINISH**

