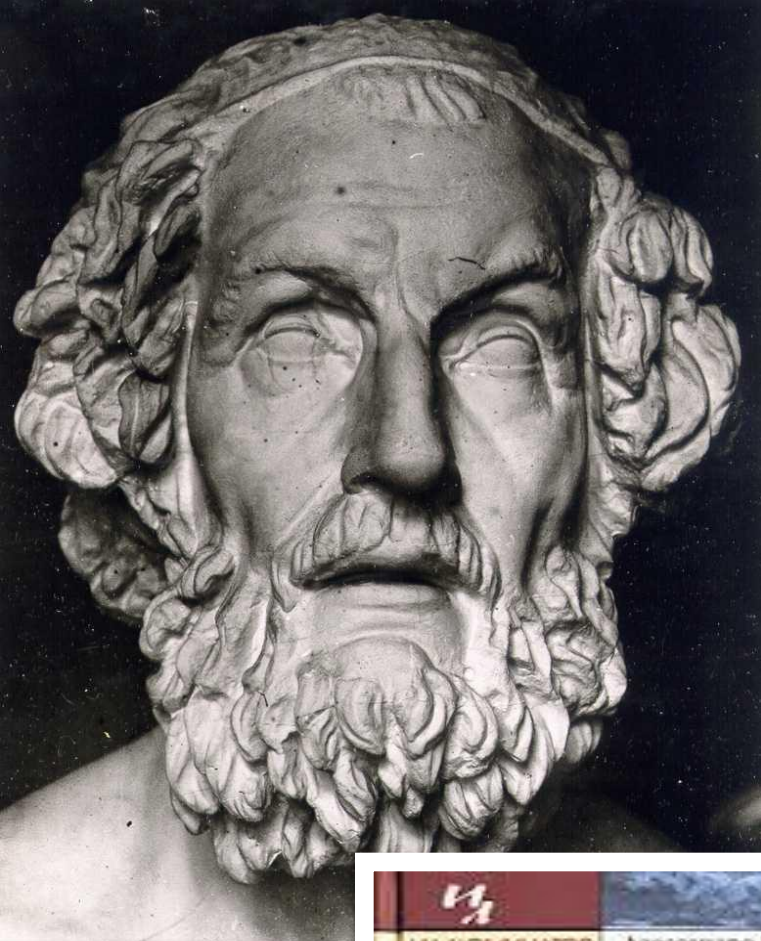


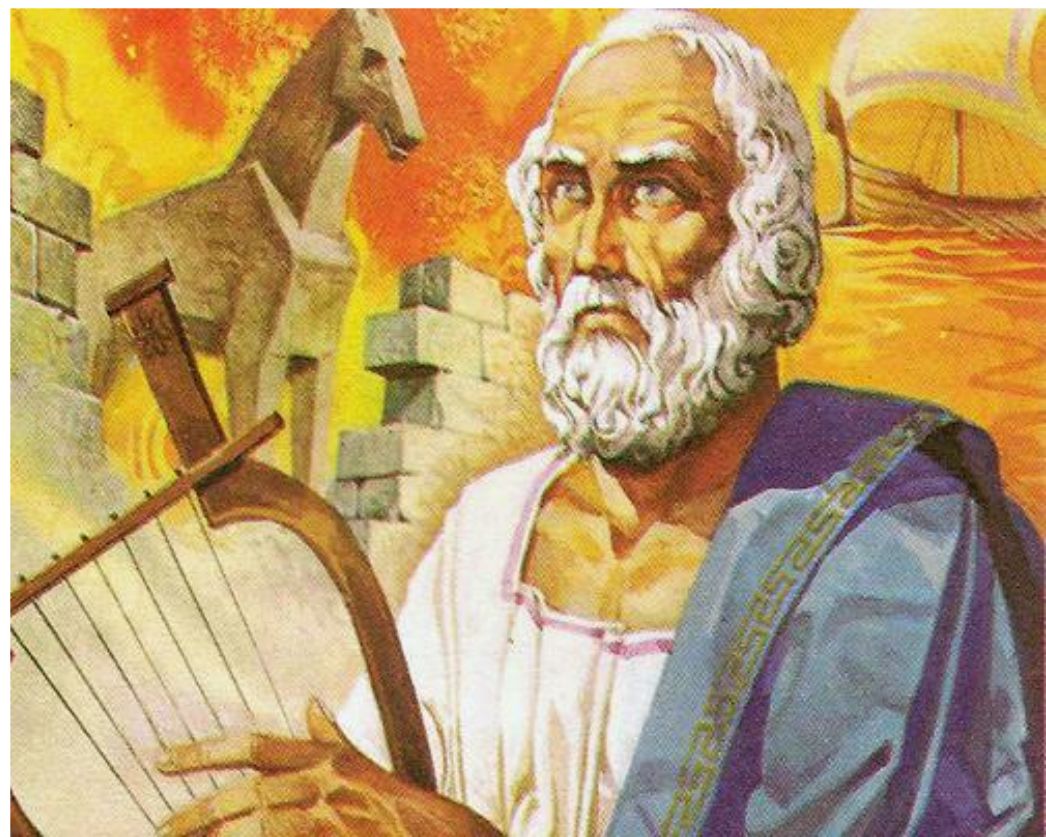
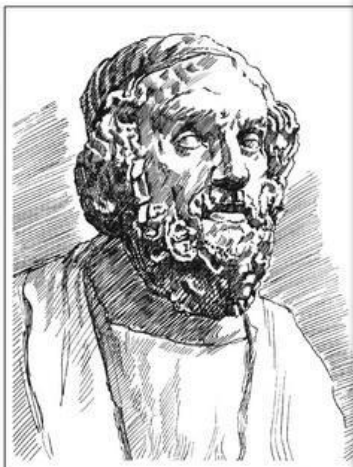
Excavation in Troy

An aerial photograph of the archaeological site of Troy, showing the city walls and various structures. The city is built on a hillside, and the walls are visible as a series of rectangular blocks. The buildings are made of light-colored stone or brick. The surrounding area is a mix of dirt and some vegetation.

Before speaking about excavation, we should remember the history of Troy.



ГОМЕР
ИЛИАДА



**“MORE THAN TWO AND A HALF
THOUSAND YEARS AGO THE BLIND
SINGER...”**

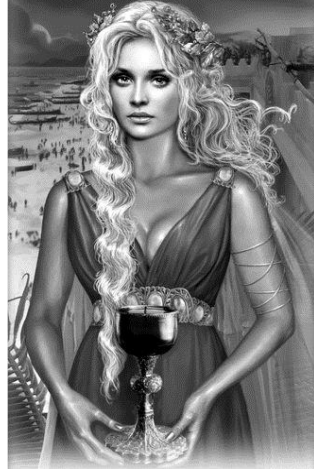




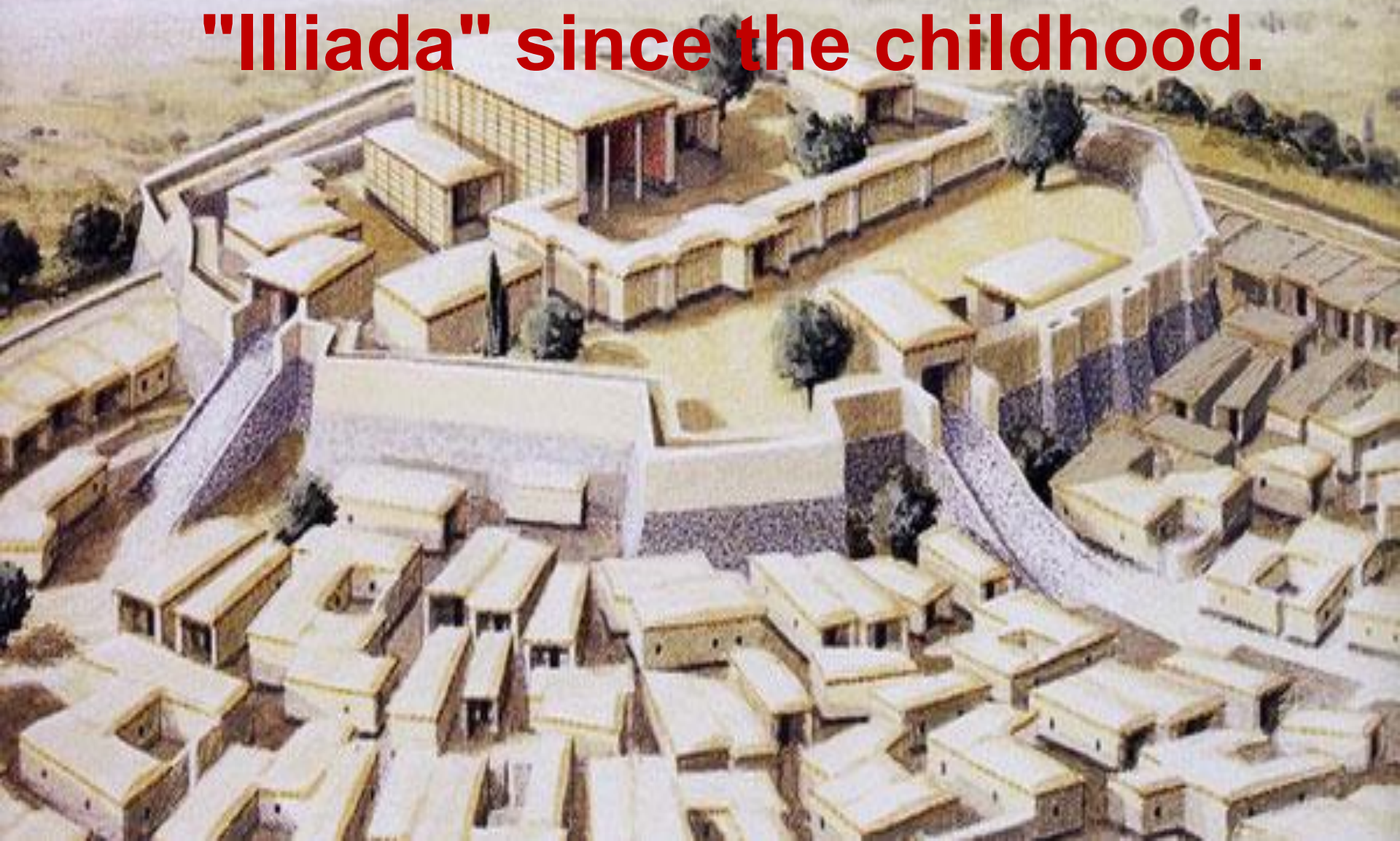
ГЕРОИ ТРОЯНСКОЙ ВОЙНЫ



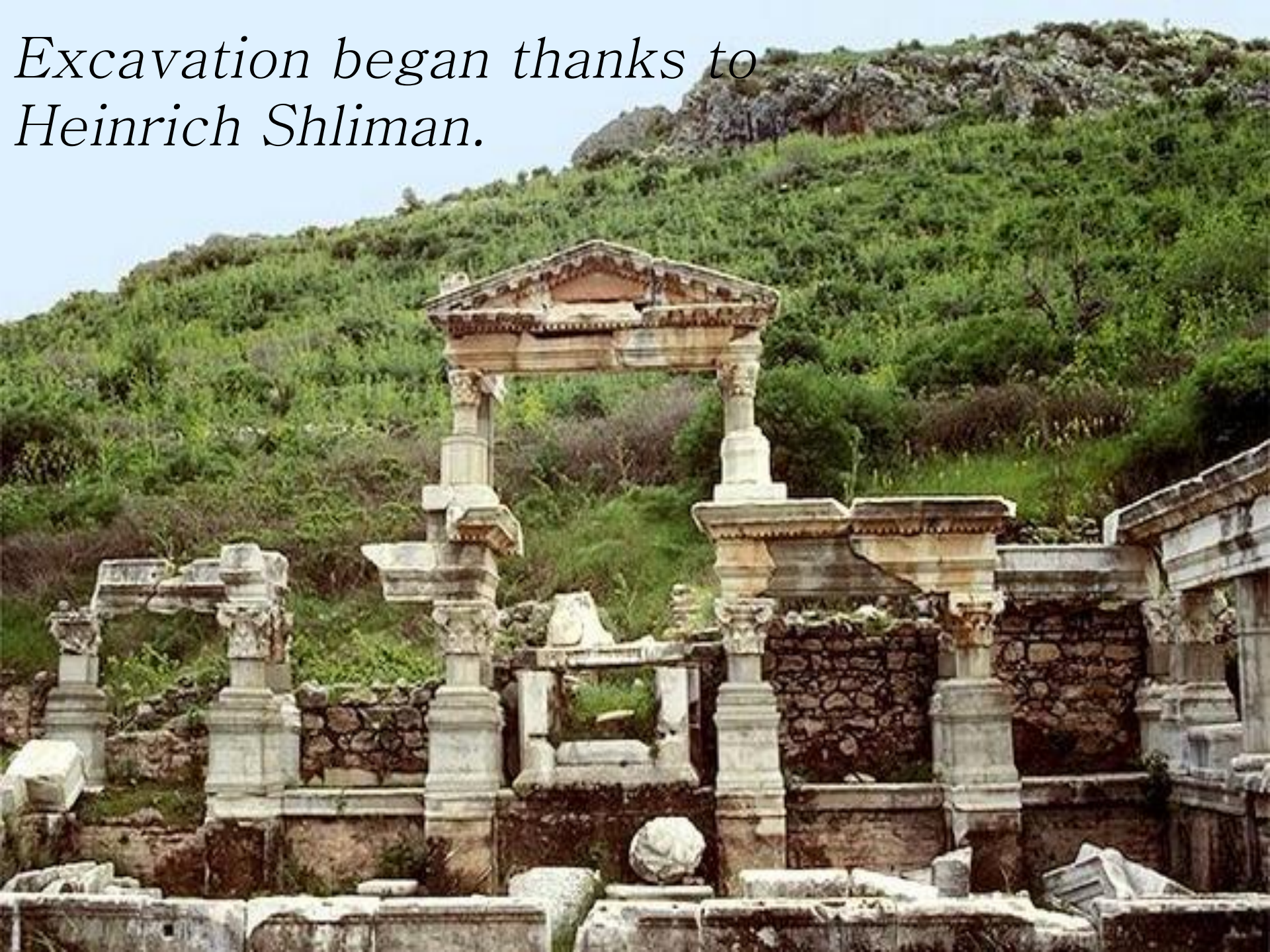
Менелай Парис Диомед Одиссей Нестор Ахиллес Агамемнон



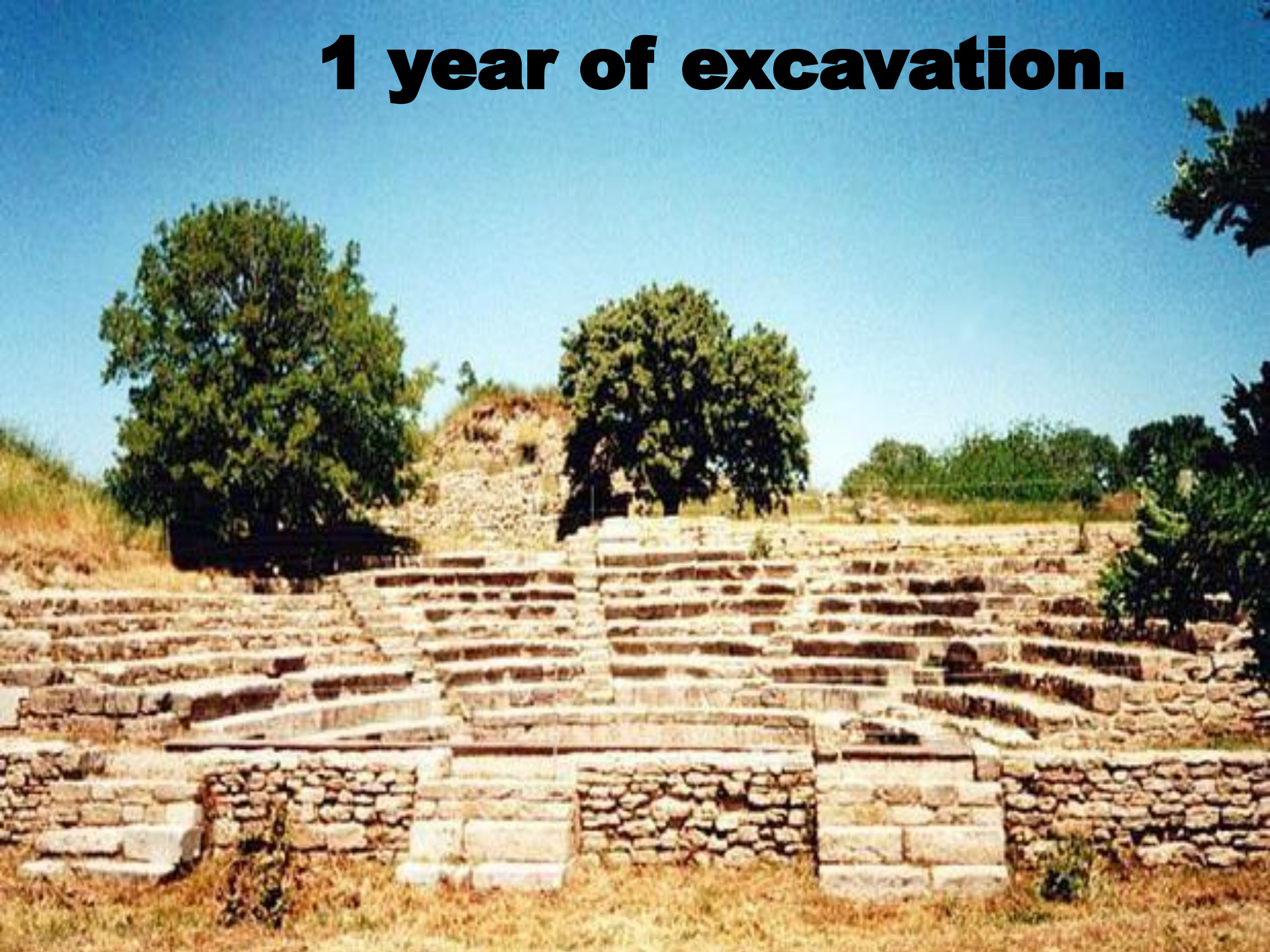
" Shliman dreamed about the legendary city from homeric "Illiada" since the childhood.

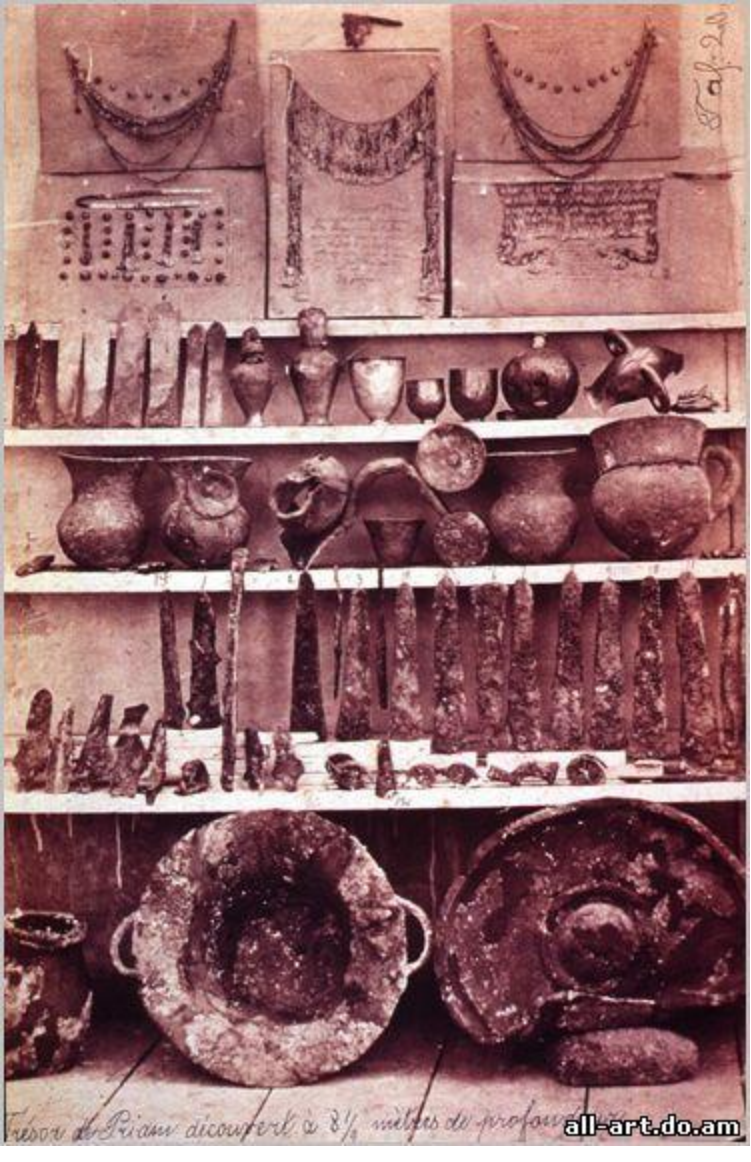


*Excavation began thanks to
Heinrich Shliman.*



1 year of excavation.





Treasure of Pisanu discovered in 1876, 1/2 miles de profondeur all-art.do.am

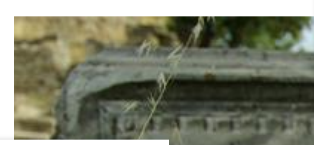


Pottery.



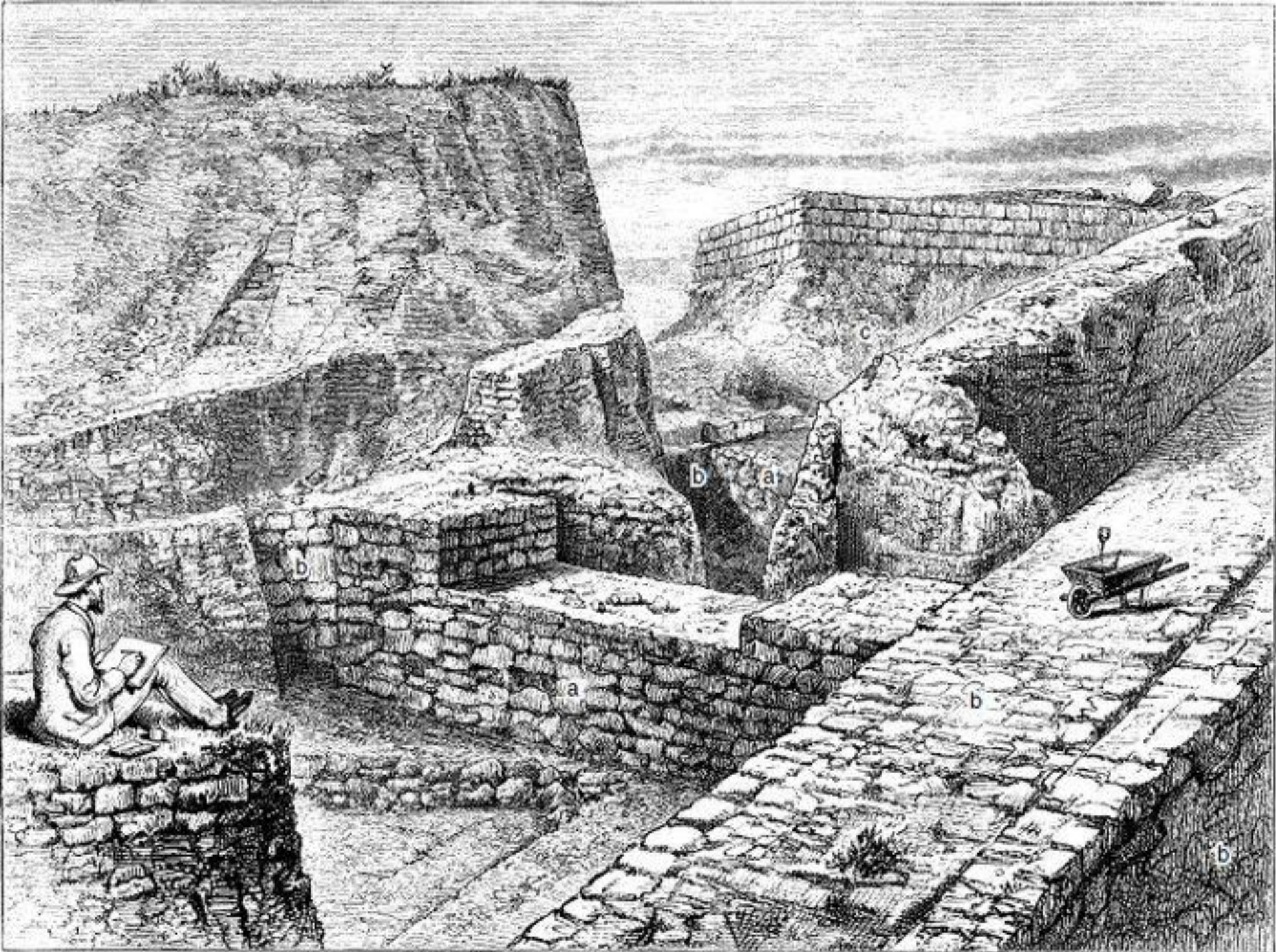
2 year of excavation.





**3 year of
excavation.**





Priam's
treasure.





Priam's treasure.



