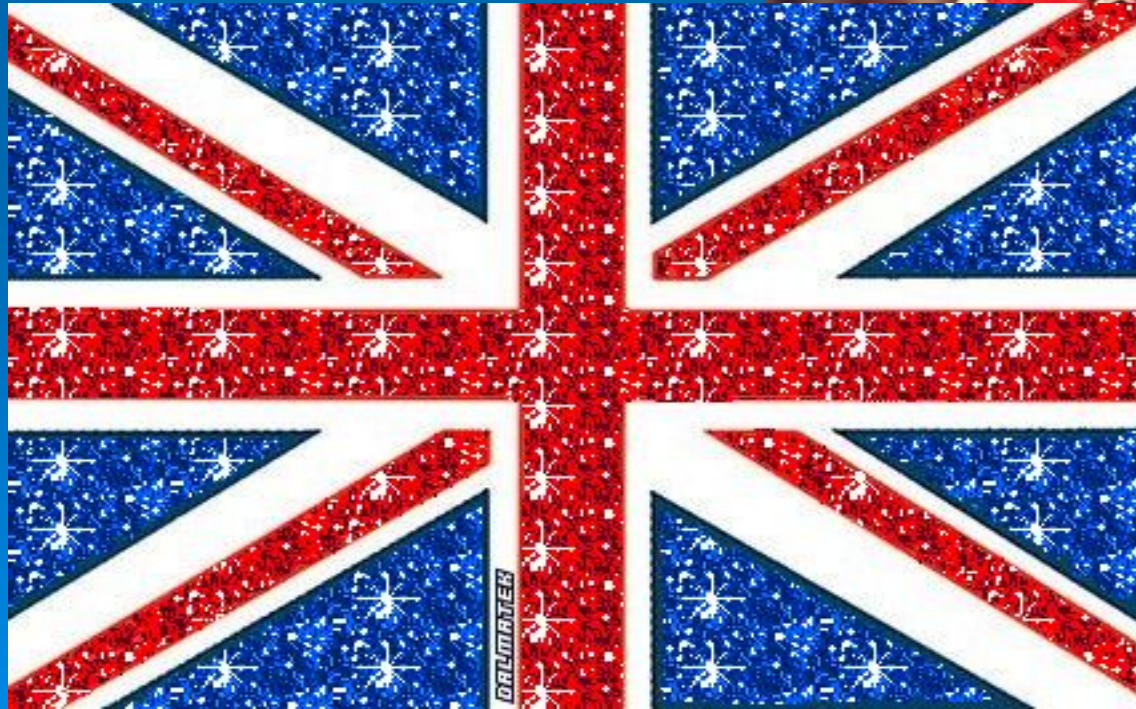


# Queen Elizabeth II



# Royal family

God save our gracious











# QUEEN ELIZABETH II

\* 1926

m. Philip, Duke of Edinburgh,  
son of Prince Andrew of Greece



**Charles**  
Prince of Wales  
\* 1948

m. Lady Diana Spencer  
daughter of Earl Spencer  
divorced 1996  
† 1997



**Anne**  
Princess Royal  
\* 1950

m. Captain Mark Phillips  
divorced 1992  
m. Commander Timothy  
Laurence



**Andrew**  
Duke of York  
\* 1960

m. Sarah Ferguson  
divorced 1996



**Edward**  
Earl of Wessex  
\* 1964

m. Sophie Rhys Jones  
married 1999



**Prince William**  
of Wales  
\* 1982



**Prince Henry**  
of Wales  
\* 1984

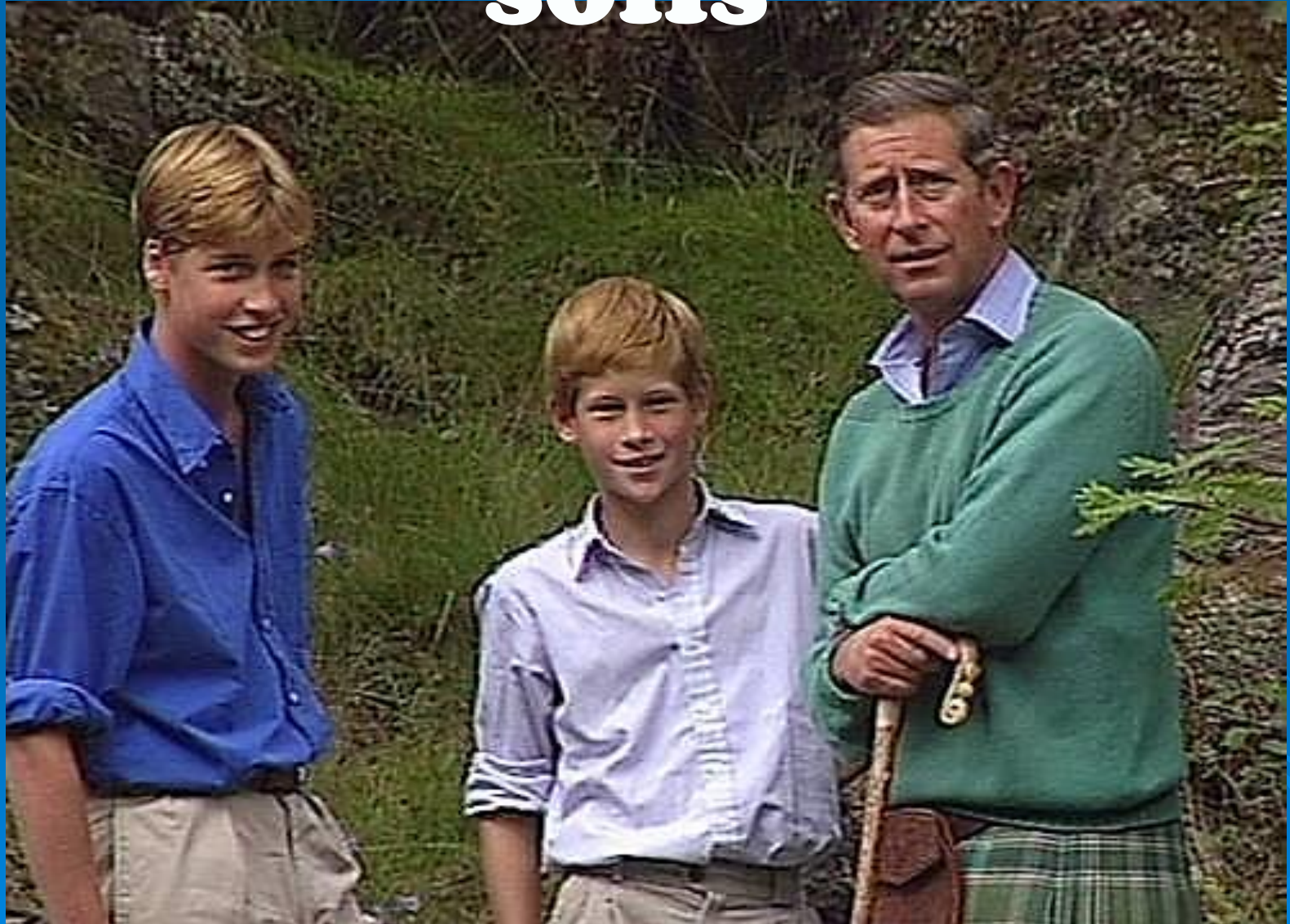
**Peter Phillips**  
\* 1977

**Zara Phillips**  
\* 1981

**Princess Beatrice**  
of York  
\* 1988

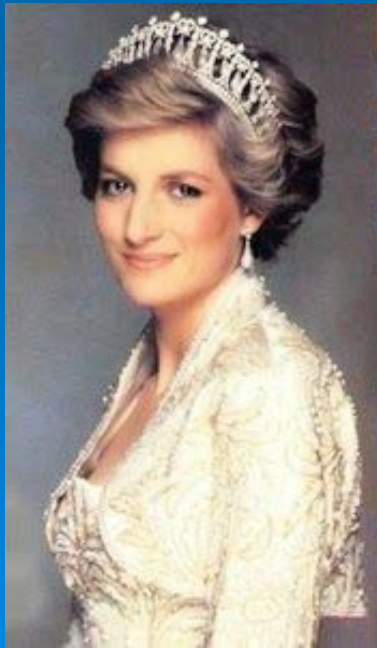
**Princess Eugenie**  
of York  
\* 1990

# Prince Charles and his sons





# Prince ss Diana





# Royal family



# Royal family





© Getty Images / Photo Disc / Photo Disc

# **Answer the questions!**

- 1. Is Britain a monarchy?**
- 2. Who rules the country?**
- 3. Is Queen's power limited by the Parliament?**
- 4. What political parties do you know?**





4 He i  
TRU

5 Unti  
for M

rldwide Fund





4  
5  
6



S.





# Part

## III

1. Princess Anne is the Queen's only daughter

True/False

2. She was voted Britain's Sportswoman of the Year. True/False



3) She wrote a series of detective novels.

**True/ false**

4) Prince Edward is a television producer with his own company. **True/**

**false**



# What are the Royal



# Buckingham Palace



**What is the address of  
Her Majesty the Queen?**



# Assessment. The evaluation

**sheet**  
Set a rating for a lesson,  
according to the following  
criteria:

<b>1</b>	<b>Name, surname</b>	
<b>2</b>	<b>As I was ready for the lesson</b>	
<b>3</b>	<b>How I have worked in the classroom</b>	
<b>4</b>	<b>How I have learned new topic</b>	
<b>5</b>	<b>Teacher's mark:</b>	

*THANK YOU!*

