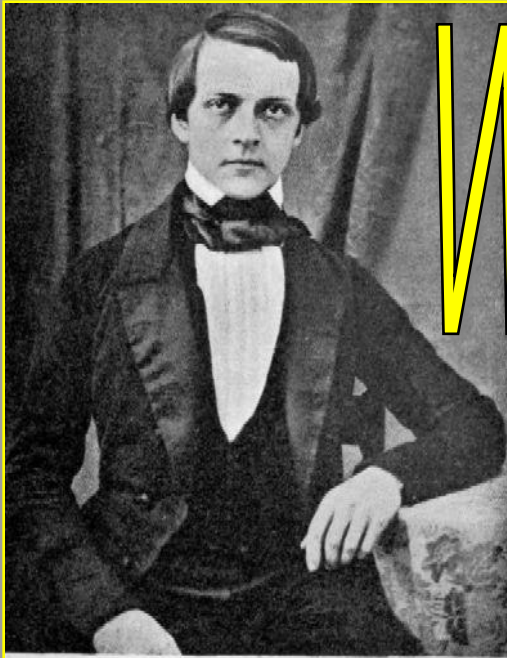


WILCHELM HOLTZ



W. Holtz

$$\varphi(r) = \frac{1}{4\pi\epsilon_0} \int_V \frac{\rho dv}{r}$$

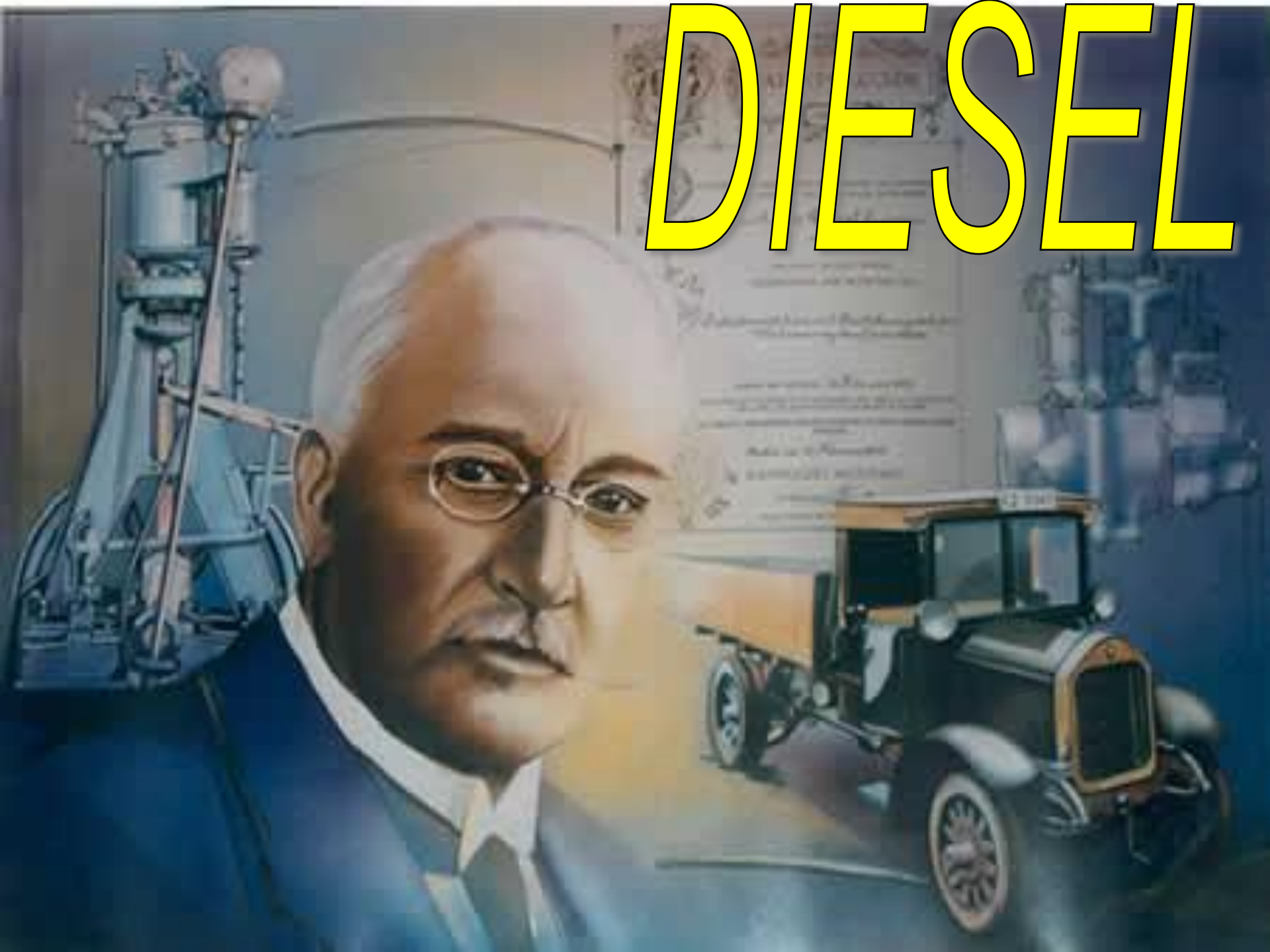
$$A(r) = \frac{\mu\mu_0}{4\pi} \int_V \frac{J dv}{r}$$



ROENTGEN



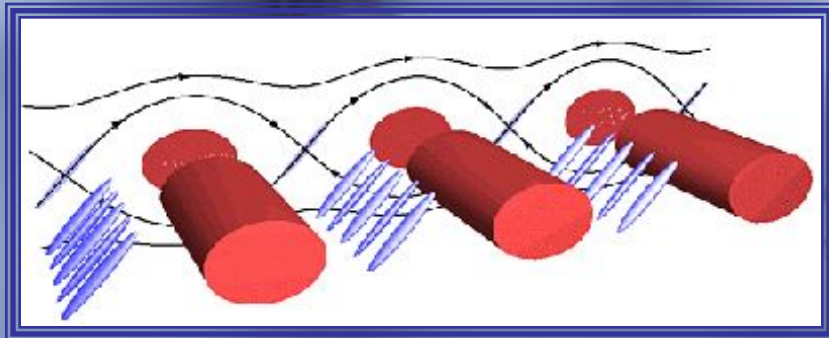
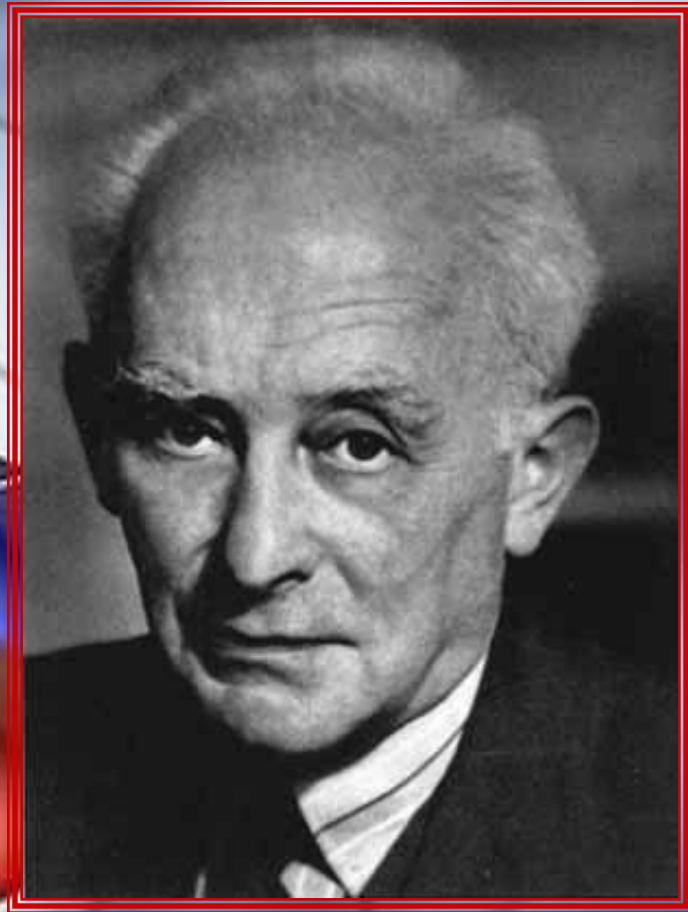
DIESEL



ROBERT KOCH

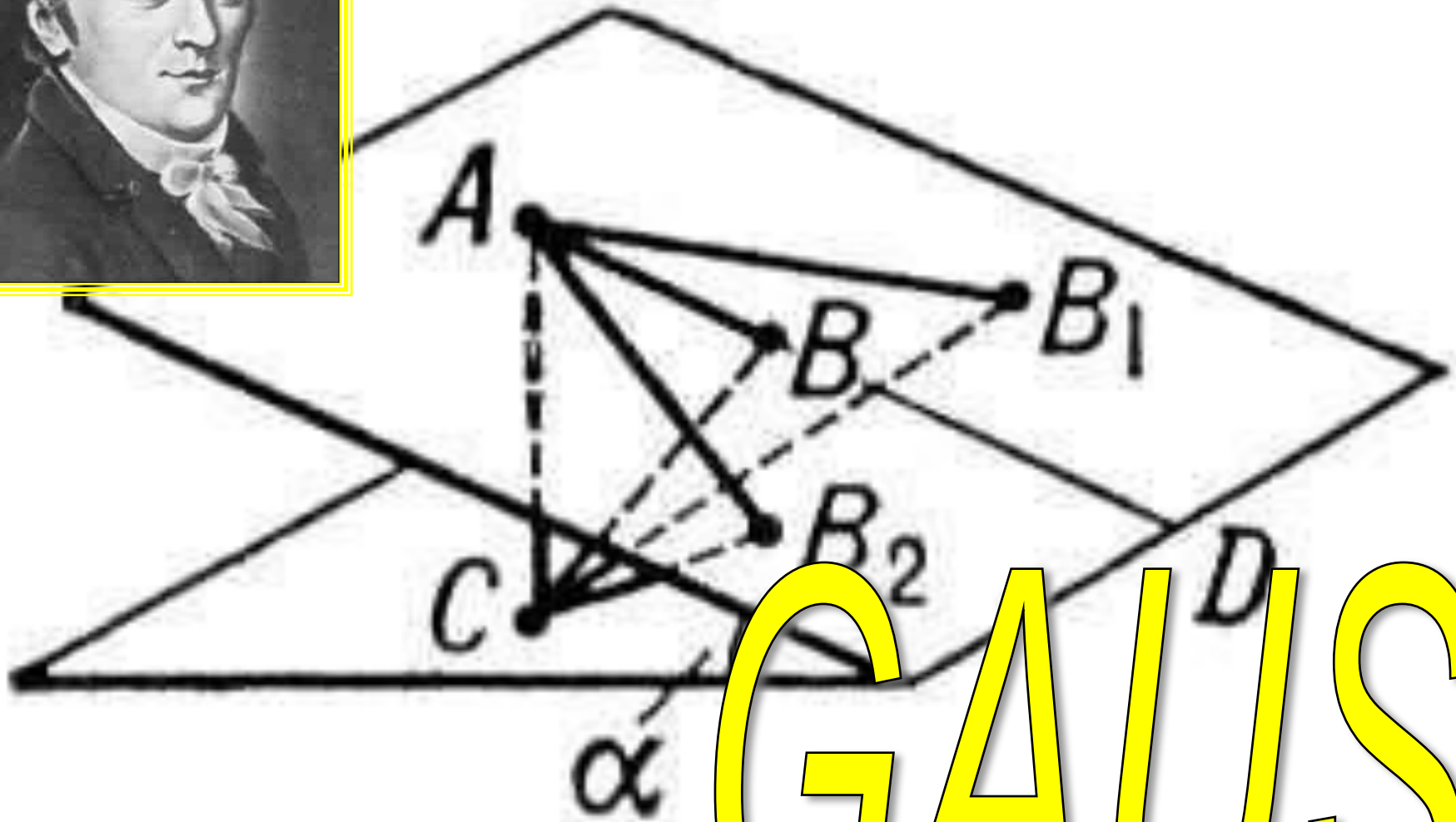


BORN





GUTENBERG



GAUSS



GERZ



ПУТЕШЕСТВИЯ А. ГУМБОЛЬДА



HUMBOLDT

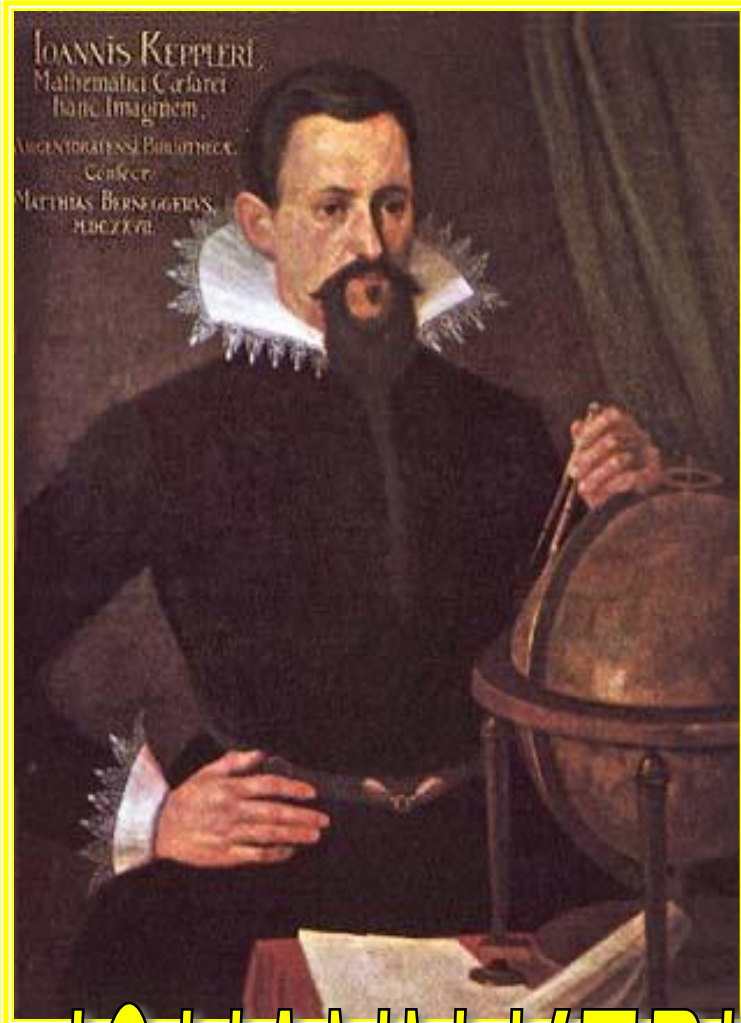
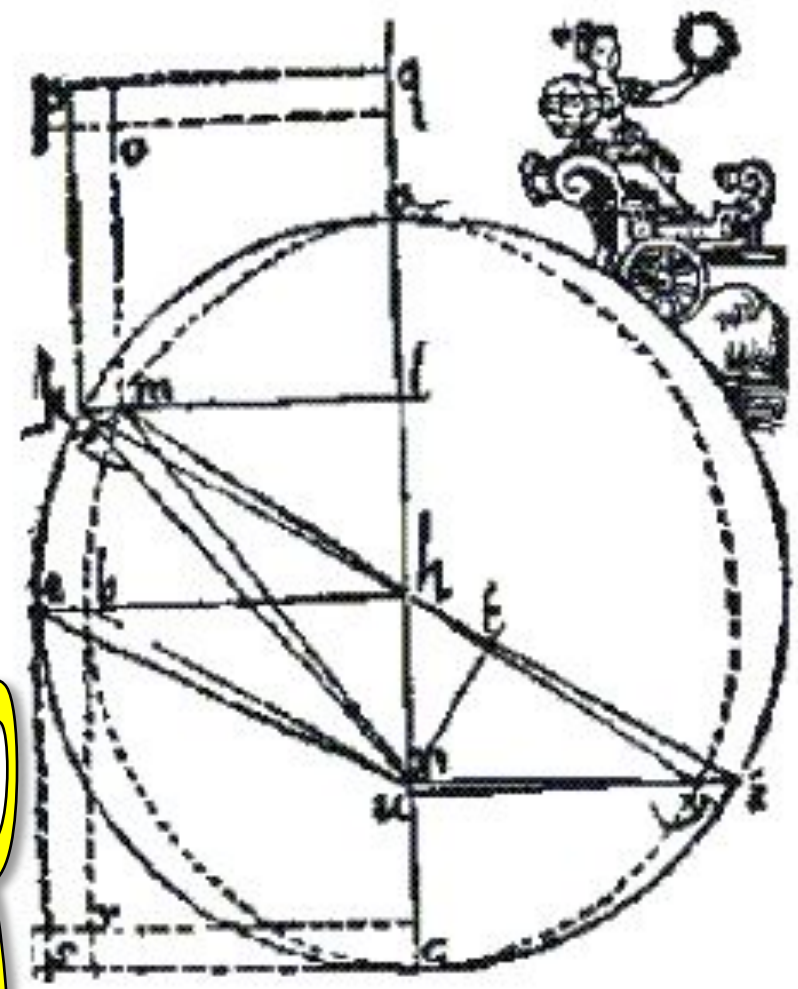


Рисунок Кеплера, иллюстрирующий эллиптичность траектории движения Марса



JOHANN KEPLER



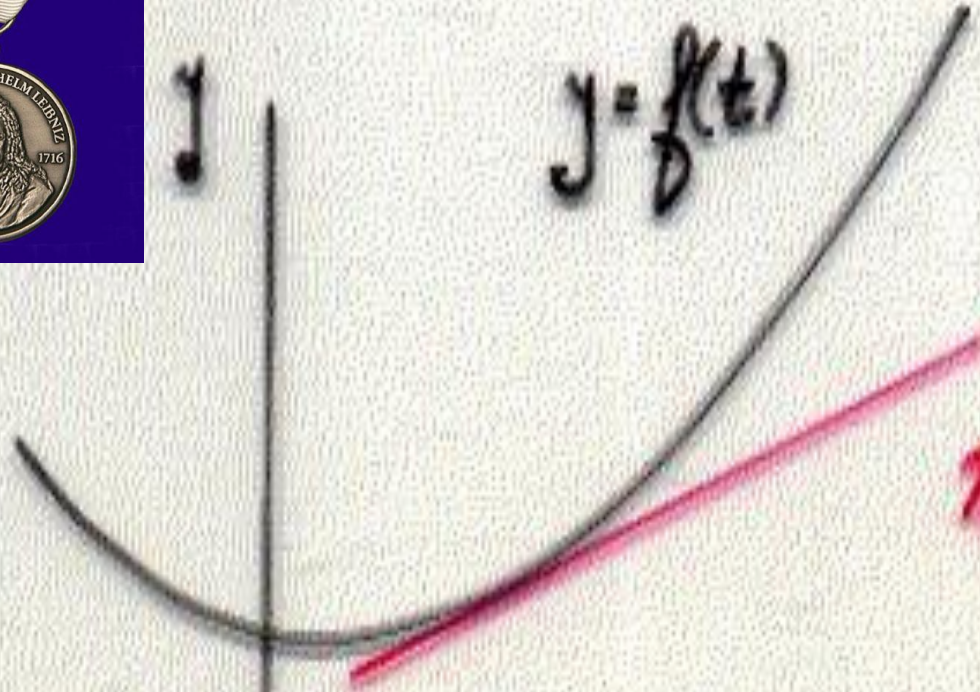
KLAPROT



KANT



DIFFERENTIAL AND INTEGRAL CALCULUS

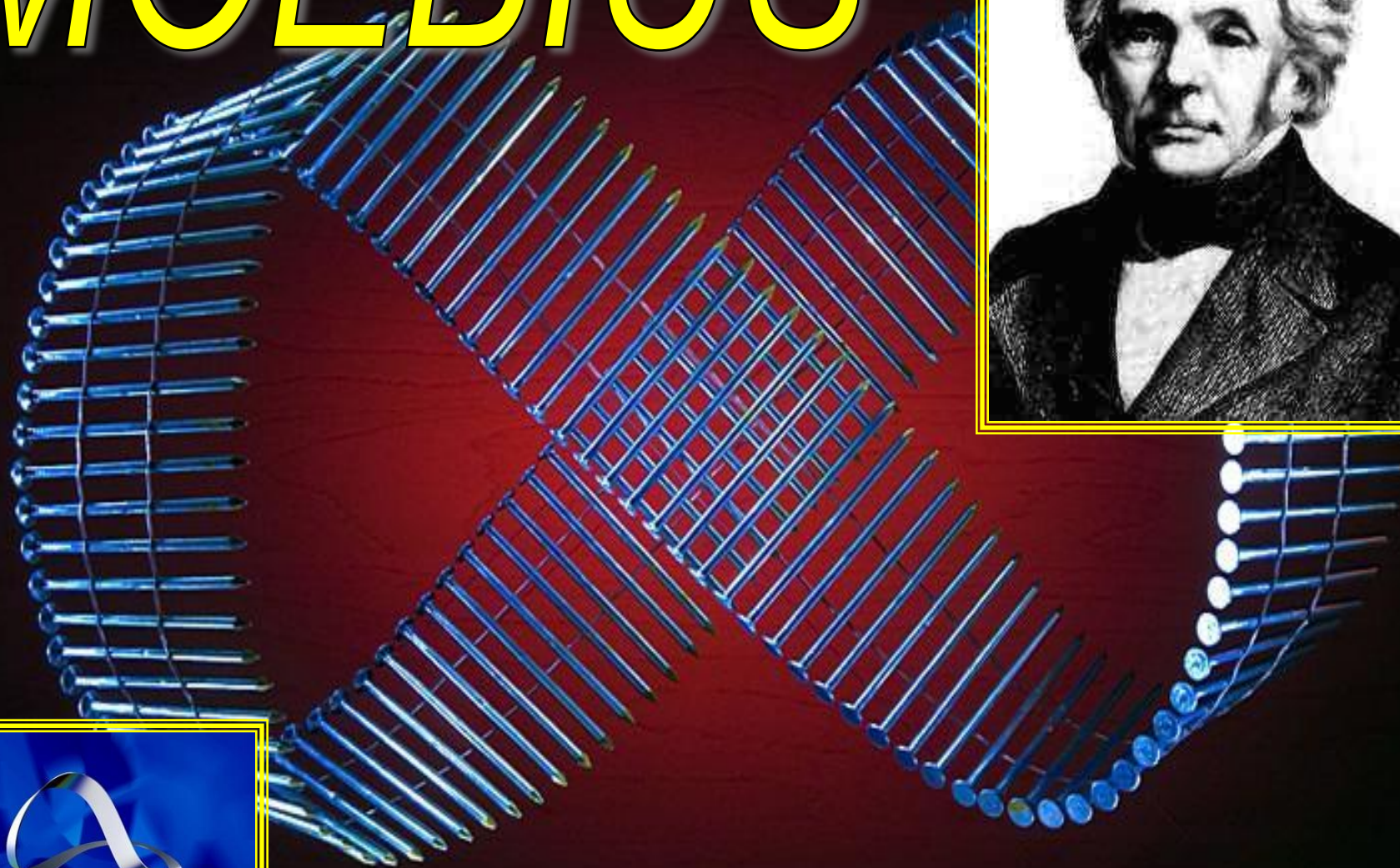
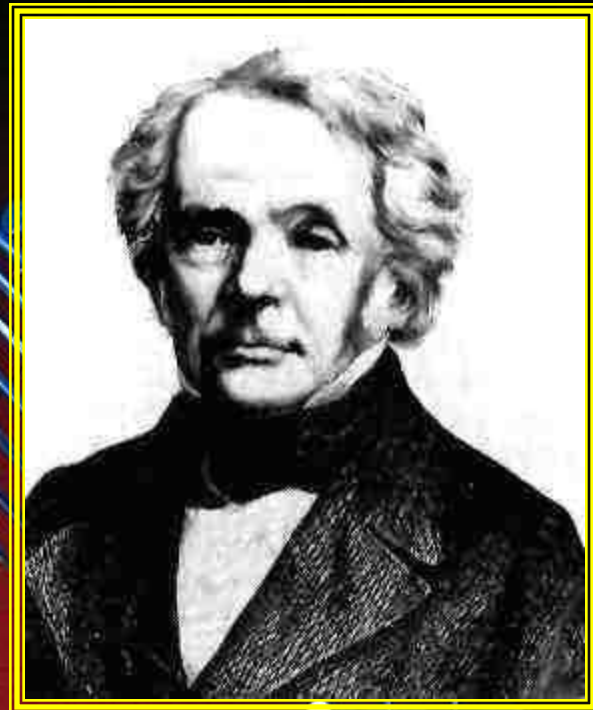


TANGENT

LEIBNIZ



MOEBIUS



Möbius



FICHTE



MAX PLANCK