



Russia





Russia has a population of about
145,600 people

Russia. It is the biggest country in the world. Russia is situated on two continents: Europe and Asia.



The capital of Russia - Moscow



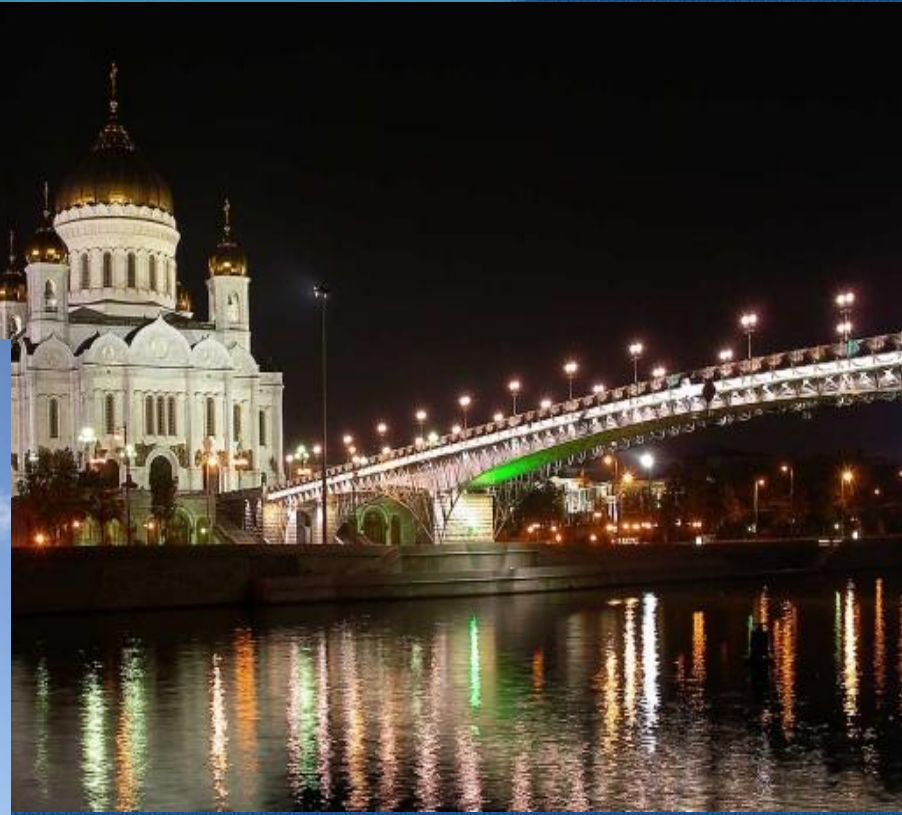


Russia's largest cities: Saint Petersburg, Novosibirsk, Yekaterinburg, Nizhniy Novgorod, and others.



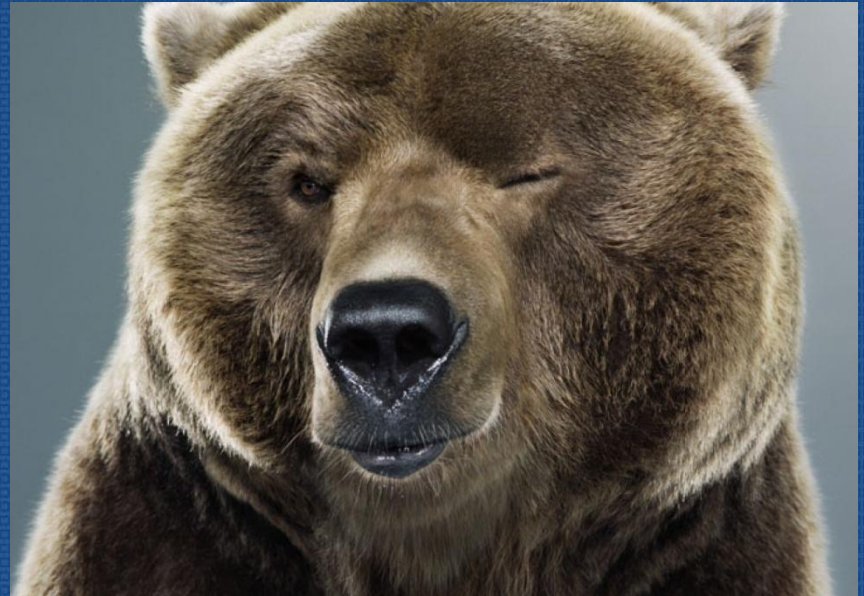


The official language is Russian





Summer temperatures in
Russia from +1 to +40,
and in winter from -1 to -50
degrees.





Seas and oceans wash Russia in the north, south, east and west. The Black Sea is in the South; the Baltic Sea is in the West

The Volga river is the longest river in Europe. It flows into the Caspian Sea.

There are many beautiful old towns – both big and small – on its banks. Practically all of them are interesting places, famous for their history.





The plant and animal worlds of my country are also very rich .There are a lot of different animals, birds and plants in our forests, fields and mountains.



One Russian symbol is the Russian national flag. This flag has three wide stripes on it. The stripes are white, blue and red. The upper stripe is white, the middle stripe is blue and the red stripe is at the bottom. These colours have always been symbolic in Russia: white – noble and sincere, blue – honest and devoted – devoted to friends, family and to the country. The red colour has always meant love and bravery.