

# BRITISH PAINTERS





"There are painters who transform the sun to a yellow spot, but there are others who with the help of their art and their intelligence, transform a spot into the Sun."

Pablo Picasso



*The English school of painting is an expression for English (or British) painters who produced characteristically English paintings.*

*English  
painting was  
influenced by  
native Celts*



# Sir James Thornhill



Self portrait,  
detail of a  
painting in the  
Painted Hall of  
the Greenwich  
Hospital,  
Greenwich,  
London

**Sir James Thornhill** (25 July 1675 or 1676 – 4 May 1734) was an English painter of historical subjects, in the Italian baroque tradition



Portrait of Sir Isaac Newton in old age by James Thornhill, 1709-12



West wall, Painted Hall, Greenwich

# William Hogarth

(10 November 1697 – 26 October 1764)



William Hogarth was an English painter, printmaker, pictorial satirist, social critic and editorial cartoonist



**Marriage A-la-Mode: 1, The Marriage Settlement**  
**William Hogarth about 1743**





*Marriage à-la-mode, Shortly  
After the Marriage* (scene two of six).



*Canvassing for Votes*



"The Election Entertainment"



*The Bench, 1758*



Hogarth's  
satirical  
engraving of the  
radical  
politician John  
Wilkes.



*Hogarth's Servants, mid-1750s.*



*In “the Graham Children” he brilliantly used his delicate colours to show the charm of childhood.*

# Sir Anthony van Dyck



Sir Anthony van Dyck (22 March 1599 – 9 December 1641) was a Flemish Baroque artist who became the leading court painter in England





*Self Portrait With a Sunflower*, Private collection



Portrait of  
Charles I,  
king of  
England  
(1600–1649  
). Oil on  
canvas, ca.  
1635.



*Samson and Delilah*, ca. 1630. A strenuous history painting in the manner of Rubens; the saturated use of colour reveals van Dyck's study of Titian.

# Thomas Gainsborough

(1727-1788)



A very lyrical painter who successfully connected man and nature.



abcgallery.com - Internet's biggest art collection

*Robert Andrews and His Wife Frances. Detail.*  
1748-49. Oil on canvas. National Gallery, London,



abcgallery.com - Internet's biggest art collection

***River Landscape with Rustic Lovers.* c.1754-56. Oil on canvas. St. Louis Art Museum, St. Louis, MI, USA**



Thomas  
Gainsborough  
*with His Wife  
and Elder  
Daughter,  
Mary.*

1751-52. Oil on  
canvas.

Marquis of  
Cholmondeley,  
Houghton, UK



*Duchess of  
Beaufort.*  
1770s. Oil on  
canvas. The  
Hermitage,  
St. Petersburg,  
Russia



# Joshua Reynolds

(1723-1792)



The leading portrait painter of his day, and the first president of the Royal Academy of Arts.



abcgallery.com - Internet's biggest art collection

*Thomas and Martha Neate, with Tutor.* 1748. Oil on canvas. 167 x 180 cm. The Metropolitan Museum of Art, New York, USA.

# Thomas Lawrence

(1769 – 1830)



A leading English portrait painter and president of the Royal Academy.



Lawrence  
was in love  
with Sally  
Siddons.  
(Sally  
Siddons by  
Thomas  
Lawrence)



**Portrait of Sir Arthur Wellesley,  
Duke of Wellington 1814**



Pope Pius VII  
1819  
oil on canvas  
Royal  
Collection,  
Windsor  
Castle



*Coronation  
portrait of  
George IV  
1821  
oil on canvas*

# John Crome (1768-1821)



PORTRAIT OF JOHN CROME.  
By Michael W. Skye.

John Crome was an English landscape artist of the Romantic era, one of the principal artists of the "Norwich school"



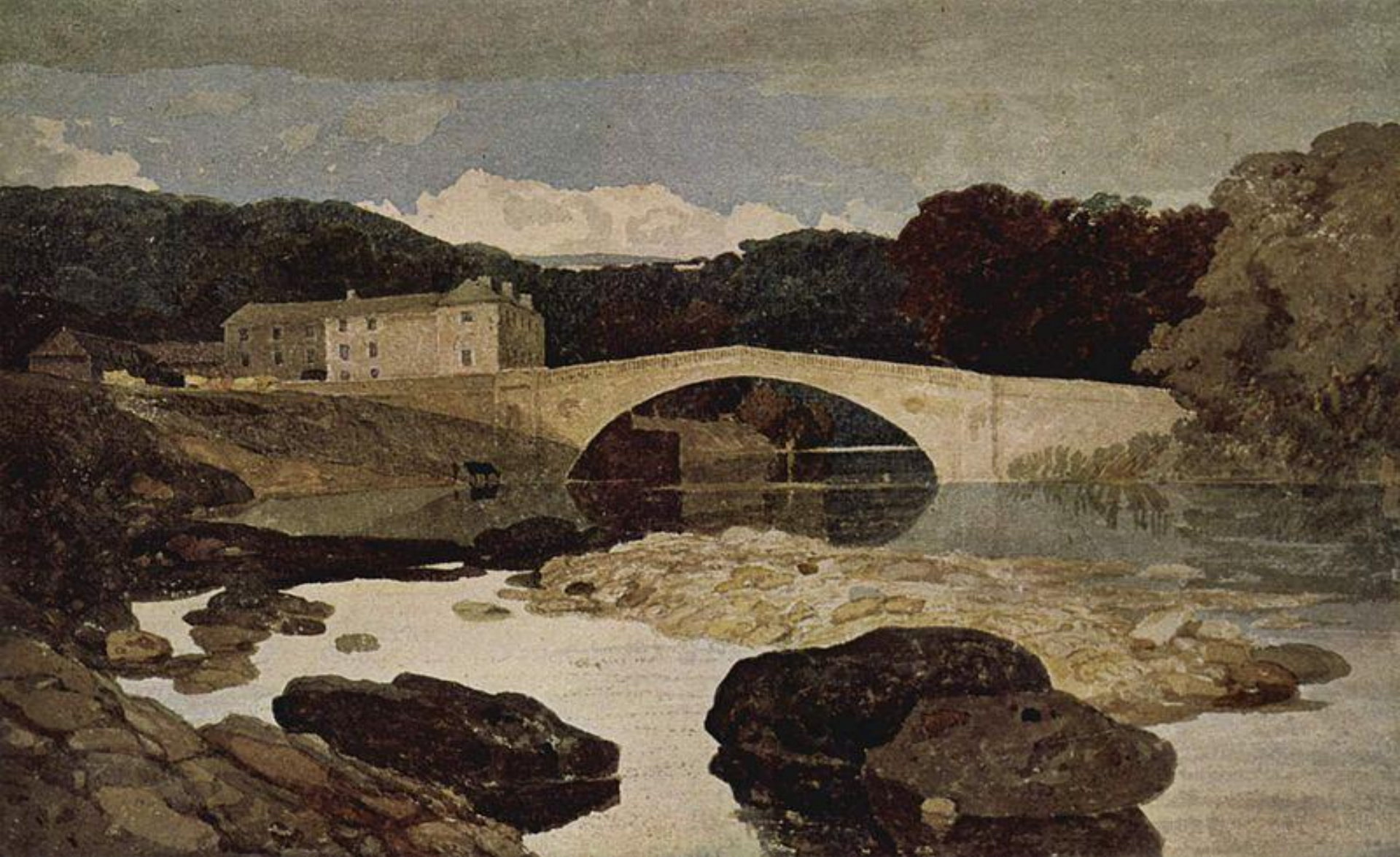


*Mousehold Heath, Norwich* , 1818-1820 , oil on canvas

# John Sell Cotman ( 1782 – 1842)



an English marine and landscape painter, etcher, illustrator and author, a leading member of the Norwich school of artists.



Greta Bridge (watercolour, 1805)



**Brig, who lost the mast.**

# Paul Sandby (1731 – 1809)



Paul Sandby  
was called  
the father of  
English  
watercolour  
painting.



**WINDSOR CASTLE**

# Notable

## XIX century landscape painters

Richard Wilson; George Morland; John Robert Cozens; Thomas Girtin; John Constable; J.M.W. Turner; and John Linnell.



Richard Wilson  
(1714 -1782)  
A Welsh  
landscape **painter**



Lake Nantel. View of  
Snowdon





GEORGE MORLAND

**George Morland**  
(1763 – 1804) was  
an English painter  
of animals and  
rustic scenes



The Labourer's Luncheon  
(1792)

# John Robert Cozens (1752 - 1797)



British draftsman and painter of romantic watercolour landscapes. The son of the Russian-born drawing master and watercolourist, Alexander Cozens, John Robert Cozens was born in London.



Lake Nemi



Lake Nemi

# Thomas Girtin (1775 - 1802)



English painter and etcher. A friend and rival of J. M. W. Turner, Girtin played a key role in establishing watercolour as a reputable art form.



*Jedburgh Abbey from the River* (1798-99, watercolour on paper).

# John Constable (1776 -1837)



An English Romantic painter.

Born in Suffolk, he is known principally for his landscape paintings of Dedham Vale, the area surrounding his home – now known as "Constable Country"



*Dedham Vale* (1802)





*The Cornfield*  
(1826)



**Maria  
Bicknell,  
painted by  
Constable in  
1816**



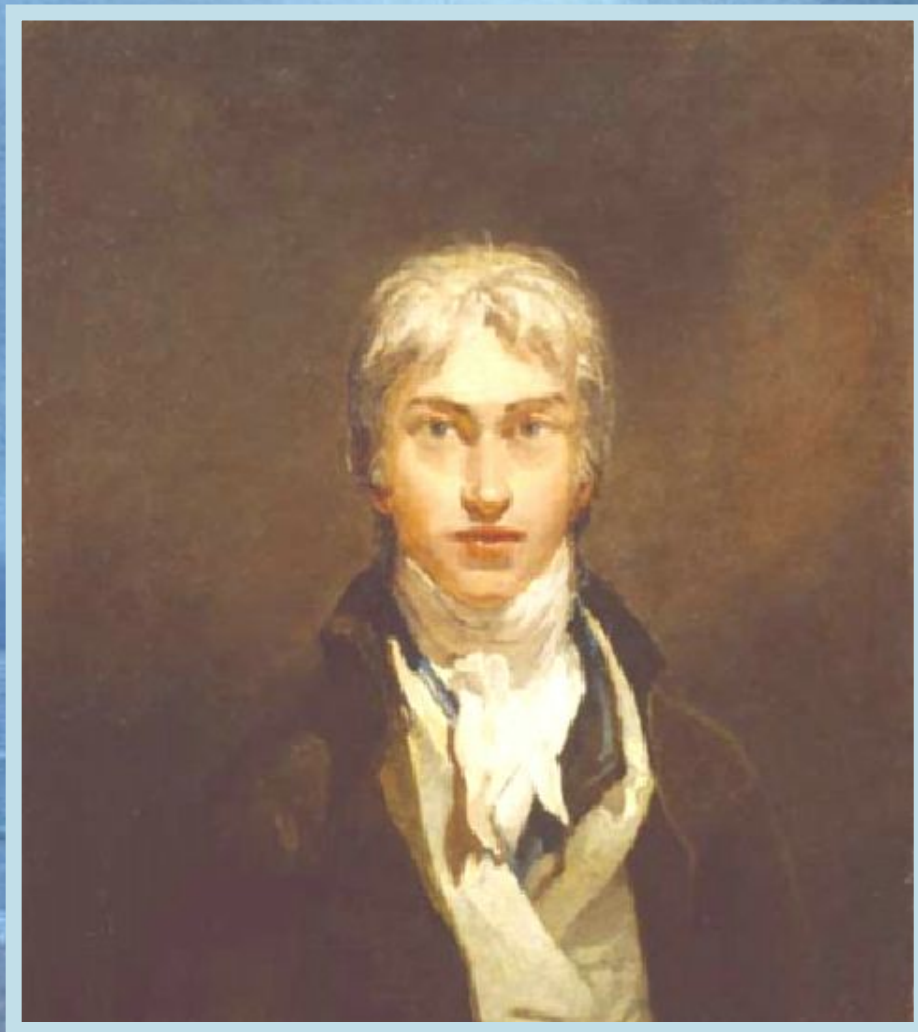
*Salisbury Cathedral from the Bishop's Garden 1825.*

As a gesture of appreciation for [John Fisher](#), the [Bishop of Salisbury](#), who commissioned this painting, Constable included the Bishop and his wife in the canvas. Their figures can be seen at the bottom left of the painting, behind the fence and under the shade of the trees.



*Boat-building near Flatford Mill 1815,*  
**Victoria and Albert Museum, London**  
oil on canvas

*Joseph Mallord William Turner*  
(1775-1851)



*Joseph Turner is an English Romantic landscape painter, water-colourist, and printmaker.*



Warkworth Castle at at sunset



**Snow Storm: Steamboat off a Harbour's Mouth 1842**  
**Oil on canvas**



**J.M.W. Turner: Light and Color (Goethe's Theory)--  
The Morning after the Deluge--Moses Writing the Book of  
Genesis (1843).**





**Rain, steam and speed ( 1844 )**

*"I did not paint... to be understood. I wished to show what such a scene was like."*



Norham Castle  
Sunrise



Norham Castle on  
the Tweed Sunrise



Norham  
Castle on  
the Tweed

*As he was at heart a sailor, a ship was a living creature to him. That is why his paintings are so powerful. He loved painting ships, men connected with the sea, fishermen and sailors at work.*





Sun Rising through Vapour.



*"Calais Pier» is one of his greatest creations of the early period, showing Turner as a draughts-man of human beings. All the figures are living individuals.*

Battle of Trafalgar ( 1806 Victory, oil on canvas  
– Tate Gallery, London )



*The last flight of the ship "The Brave."*



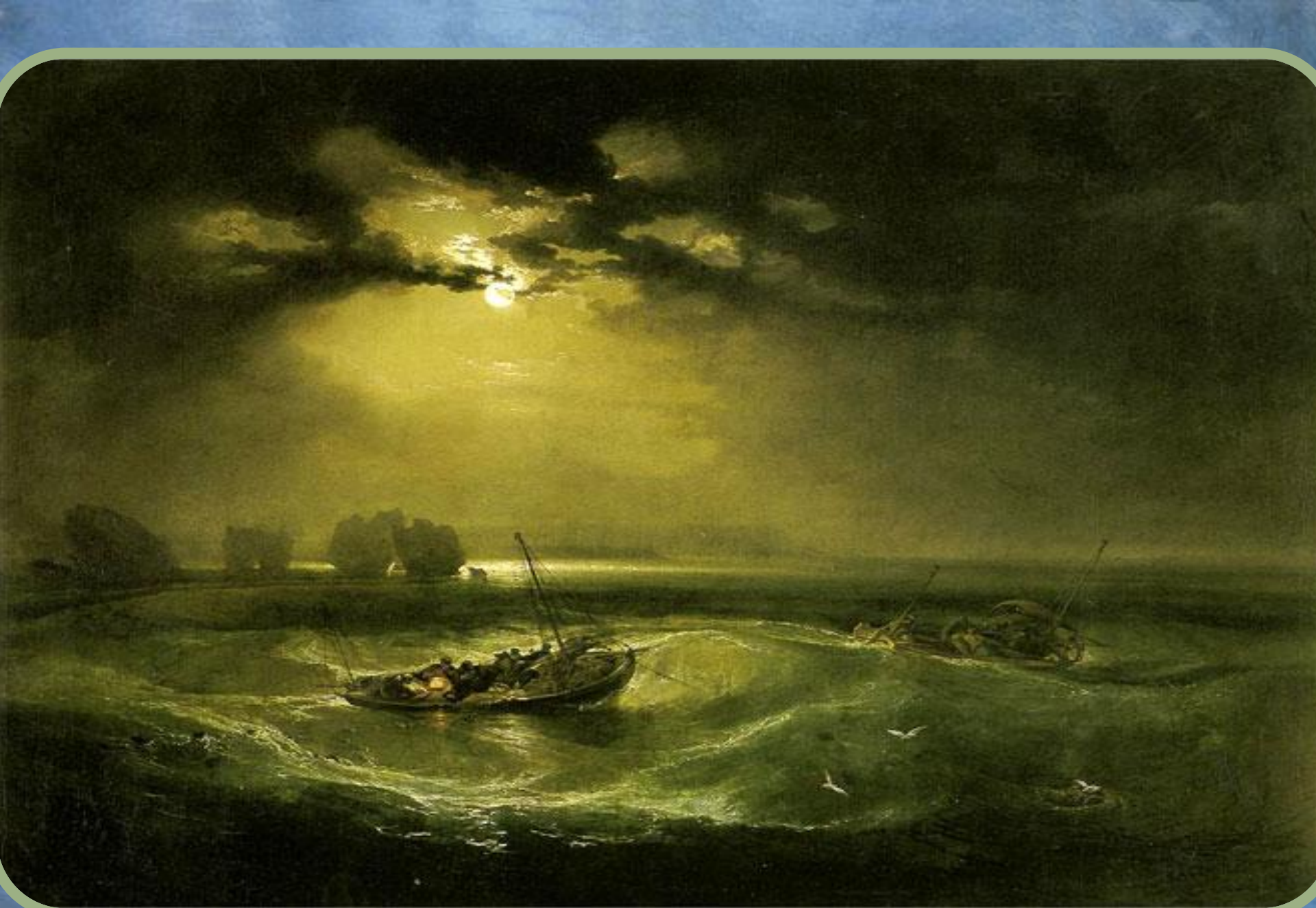
# *Hot parliament building*







*Hannibal crossing the Alps.*

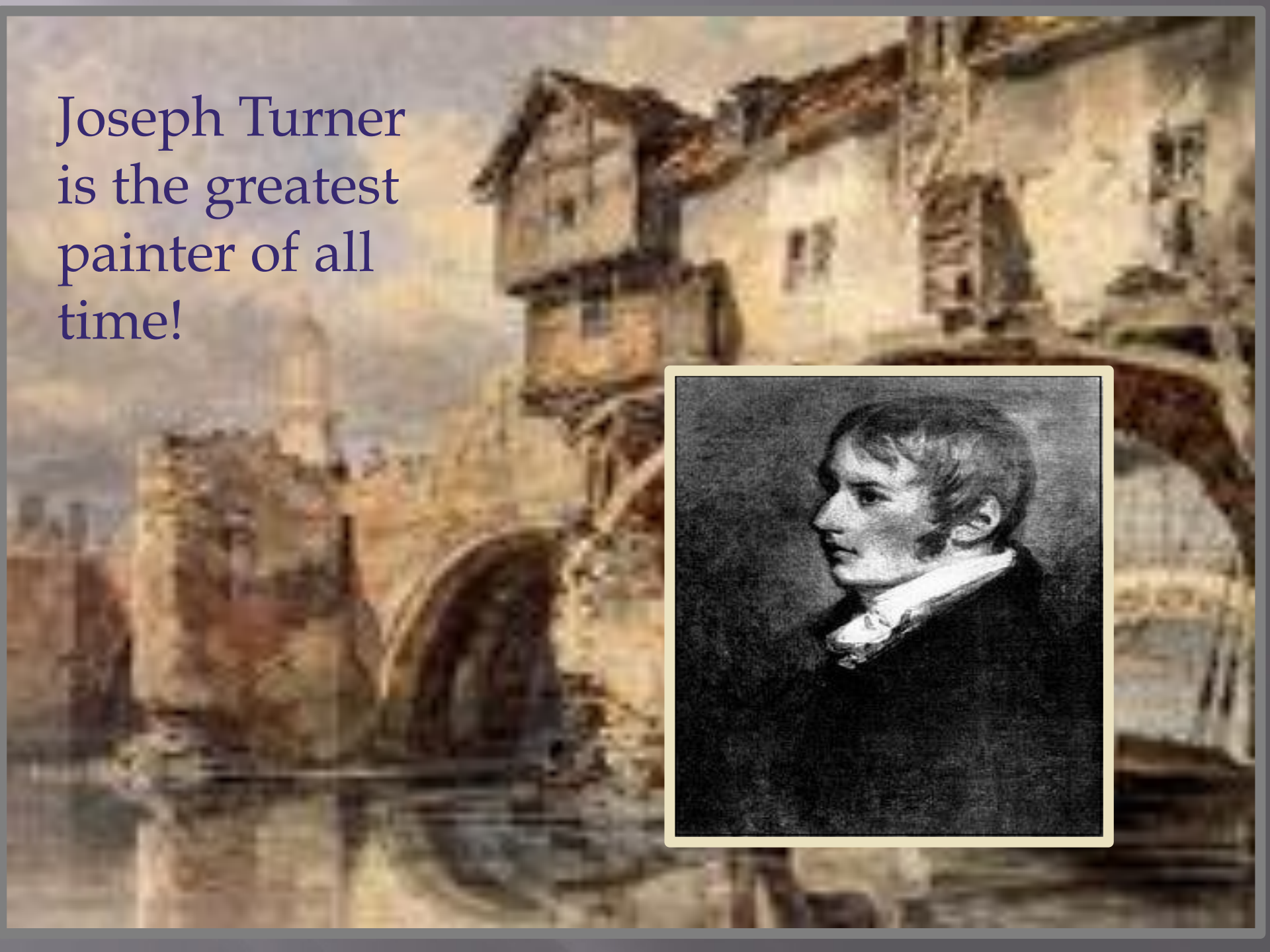


*Fishermen at Sea*

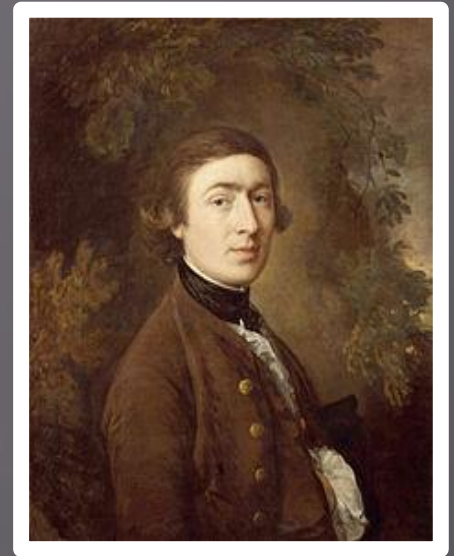


Joseph Turner died, reaching out to the window to take another look at the Thames and in the sun. The doctor, who was present at his death, wrote that "just before nine o'clock the sun came out and the beam it fell right on it, as bright as

Joseph Turner  
is the greatest  
painter of all  
time!



# The greatest British painters



# The Art Language is an International language



abogallery.com - Internet's biggest art collection

