

The background of the image features a repeating pattern of stylized maple leaves in various shades of yellow and gold, set against a light beige gradient. The leaves are depicted with simple outlines and some internal vein details, creating a textured, autumnal feel.

CANADA



СЕВЕРНЫЙ ЛЕДОВИТЫЙ ОКЕАН

СЕВЕРНЫЙ ЛЕДОВИТЫЙ ОКЕАН

СЕВЕРНАЯ АМЕРИКА

ЕВРОПА

МОСКВА

АЗИЯ

Лос-Анджелес

ВАНКУВЕР

НЬЮ-ЙОРК

ВАШИНГТОН

МЕХИКО

КАИР

КАИР

Бомбей

ТОКИО

ЮЖНАЯ АМЕРИКА

АФРИКА

ИНДИЙСКИЙ ОКЕАН

АВСТРАЛИЯ

Сан-Паулу

БУЭНОС-АЙРЕС

КЕЙПТАУН

Сидней

АНТАРКТИДА

0 500 1000 2000 км

© ГИМН



КАНАДА



Arctic Ocean

ICELAND

Greenland
(DENMARK)

Baffin Bay

**BAFFIN
ISLAND**

Davis
Strait

Nunavut

Labrador
Sea

Hudson
Bay

CANADA

UNITED STATES

Atlantic
Ocean

the Rocky Mountains



Great Lakes

An aerial photograph of the Great Lakes basin in North America. The lakes are highlighted in a dark blue color. The surrounding land is shown in shades of green, representing vegetation. The labels for the lakes are in a white, serif font. The Great Lakes are arranged from north to south: Lake Superior, Lake Michigan, Lake Huron, Lake Erie, and Lake Ontario. The St. Lawrence River is visible connecting Lake Ontario to the east.

Lake Superior

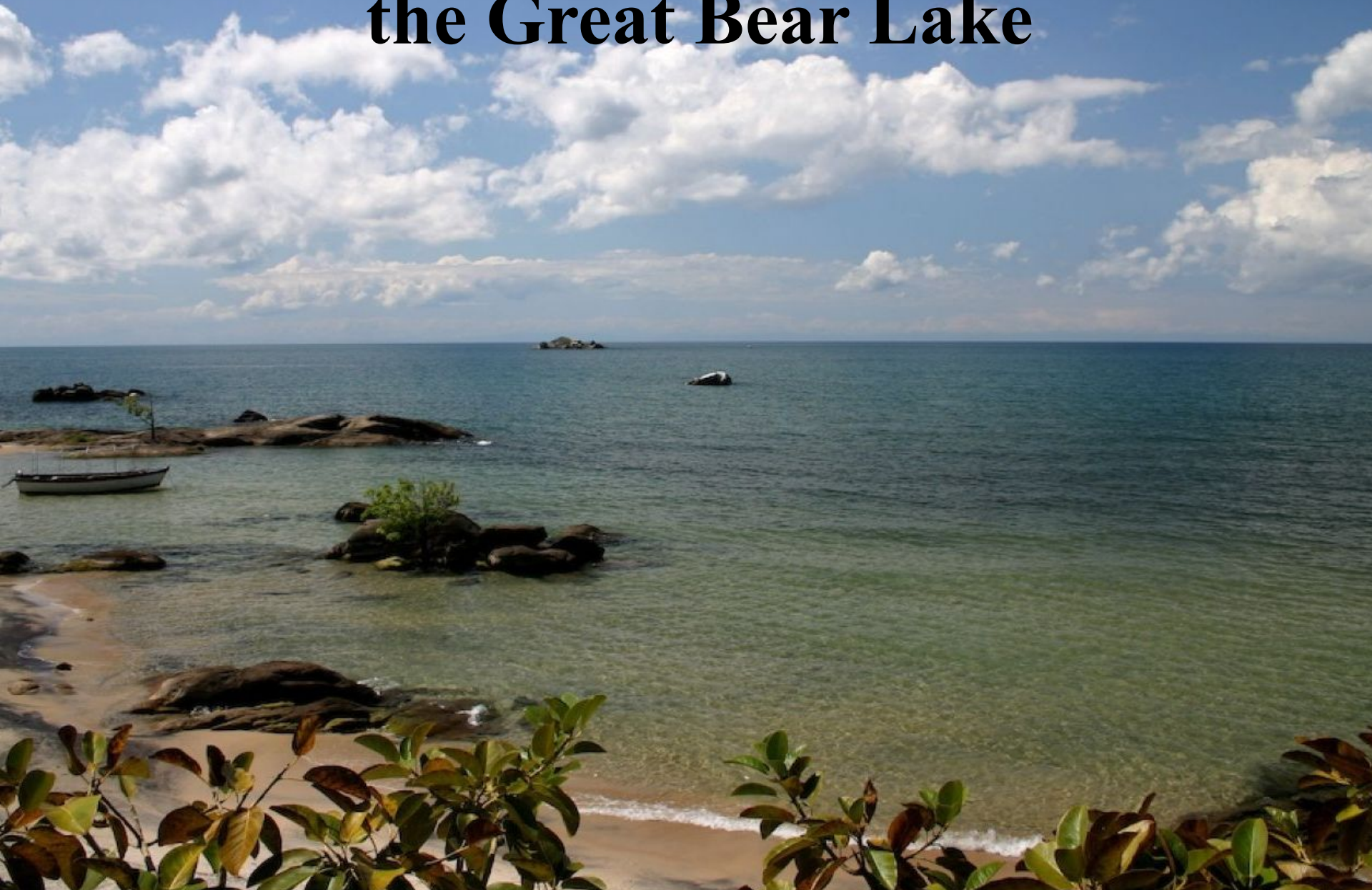
Lake Michigan

Lake Huron

Lake Ontario

Lake Erie

the Great Bear Lake



the Great Slave Lake



Lake Winnipeg



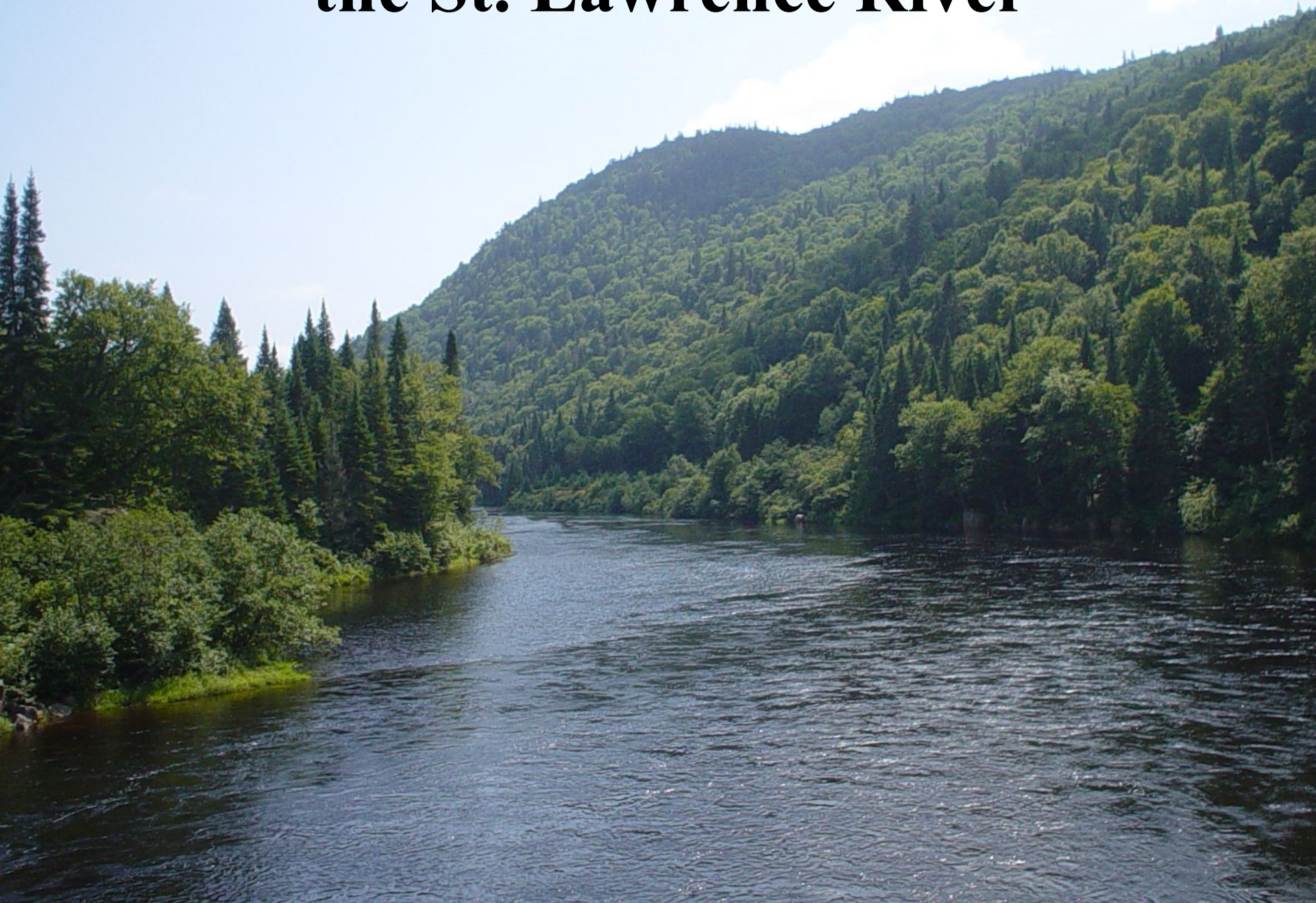
the Mackenzie River



the Yukon River



the St. Lawrence River



Great Water Way



The Niagara Falls



highlands



low plains



prairies



Geographical position

- **Canada is the second largest country in the world after the Russian Federation.**
- **Canada has an area of nearly 10 million square kilometres.**
- **Canada is situated in the central part of North America.**
- **Canada borders on the USA from the south and from the west (Alaska).**
- **Its western coast is washed by the Pacific Ocean, its eastern coast – by the Atlantic Ocean, and its northern coast – by the Arctic Ocean.**

Relief

- **Canada has mountains, high plains and low plains.**
- **The Rocky Mountains run parallel to the Pacific coast.**
- **East of these mountains are the high plains.**
- **The low plains lie in the region of the Great Lakes and the St. Lawrence River.**
- **The central plains form the prairies.**

Waters

- **The Great Lakes are situated between the USA and Canada.**
- **They are the Superior, the Huron, the Erie and the Ontario.**
- **The fifth Great Lake – the Michigan – doesn't belong to Canada, it lies in the USA.**
- **There are many other large lakes on the territory of Canada, for example, the Great Bear Lake, the Great Slave Lake and lake Winnipeg.**
- **Canada also has large rivers: the Mackenzie, the Yukon and the St. Lawrence River.**
- **The Niagara Falls are one of the most splendid sights in the world.**

Climate

- **Canada has severe climate in the north and mild climate in the south.**
- **Canada has several climatic regions from subarctic to temperate.**
- **Winter in Canada lasts from 4 to 5 months with heavy snowfalls.**

Canada is very rich in natural resources such as

diamond



gold



oil



Natural resources



timber

natural gas



metal ore



metallurgy



shipbuilding



are highly developed in Canada

car building



machine building





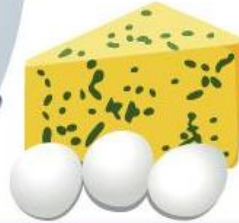
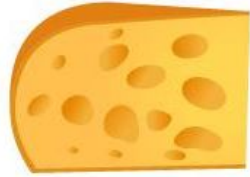
Quebec

Ontario

**are the main
centres of the
*hydro-electric
industry***



Canada's main agricultural products are



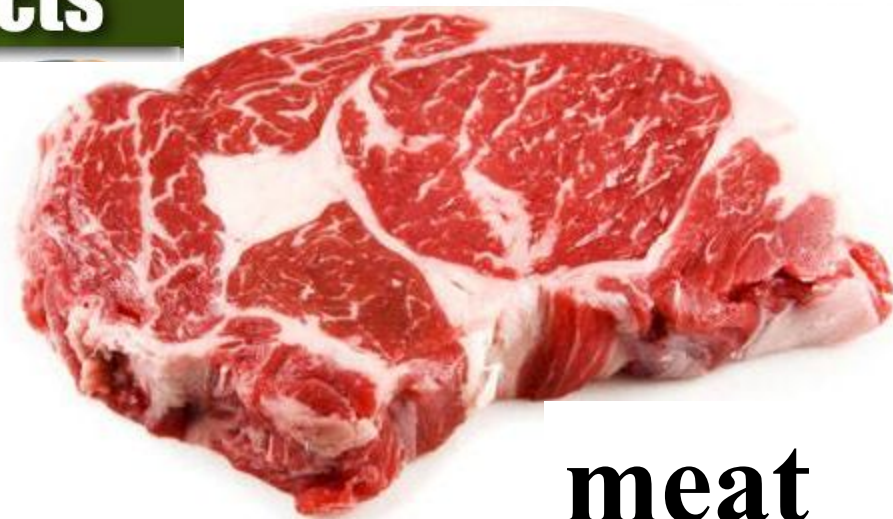
Dairy products



fruit



wheat



meat

Geographical position

- Canada is the second largest country in the world. Only Russia has a greater land area. Canada is situated in North America.
Canada is a federation of 10 provinces and 2 territories.

The population

- Canada is slightly larger than the United States, but has only about a tenth as many people. About 28 million of people live in Canada. About 80% of the population live within 320 km of the southern border. Much of the rest of Canada is uninhabited or thinly populated because of severe natural conditions. Canada's people are varied. About 57% of all Canadians have some English ancestry and about 32% have some French ancestry. Native people – American Indians and Eskimos – make up about 2% of the country's population. 77% of Canada's people live in cities or towns.

The Capital of Canada



- Ottawa is the capital of Canada. One third of its people are French-speaking. Ottawa is the capital of Canada and is located on the banks of the Ottawa, Rideau and Gatineau rivers. Canada's fourth-largest city is a complementary blend of urban and rural lifestyles, old and new neighborhoods, culture and heritage, business and government. Ottawa also has a high standard of living reflected in a multitude of accessible services, vibrant entertainment, exciting recreational activities, and thriving businesses.

Canada's Great Lakes



- Canada's Great Lakes are some of the largest and most beautiful in the world. The alpine towns sprinkled along the Rockies on the Alberta side are an unspoiled mountain playground where each season has its own unique beauty and selection of activities.

FIAG



- The red and white Canadian flag shows a leaf of the maple tree, which grows in North America. The maple leaf is the official emblem of Canada. The official ceremony inaugurating the new Canadian flag was held on Parliament Hill in Ottawa on February 15, 1965, with Governor General Georges Vanier, Prime Minister Lester B. Pearson, the members of the Cabinet and thousands of Canadians in attendance.



National emblem



- Early settlers are represented by the three royal lions of England, the royal lion of Scotland, the harp of Ireland and the fleur-de-lis of France.
- The lion of England holds the British flag.
- The unicorn of Scotland holds the flag of Royal France.
- The bottom has the fleur-de-lis (France), the shamrock (Ireland), the thistle (Scotland), and the rose (England).

Well-known people



- Selin Dion was born in Canada, Quebec, Shurlemun.

Well-known people



- Peterson Oscar was born in Canada, Montreal.

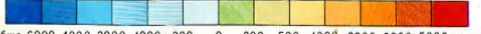
Well-known people



- Gretzky Uan was born in Canada. He is well-known ice hockey player.



Шкала глубин и высот в метрах



60° 50° 40° 30° 20° 10° 0° 10° 20° 30° 40° 50° 60°

- **Canada**
- **Baffin Island**
- **The Arctic Ocean**
- **The Atlantic Ocean**
- **The Pacific Ocean**
- **the Rocky Mountains**
- **Great Lakes**
- **Lake Superior**
- **Lake Huron**
- **Lake Ontario**
- **Lake Erie**
- **Lake Michigan**
- **the Great Bear Lake**
- **the Great Slave Lake**
- **Lake Winnipeg**
- **the Mackenzie River**
- **the Yukon River**
- **the St. Lawrence River**
- **Great Water Way**
- **The Niagara Falls**
- **highlands**
- **low plains**
- **prairies**